

MONTAGUE - 4650



A - Stucco Bungalow



B - Farmhouse

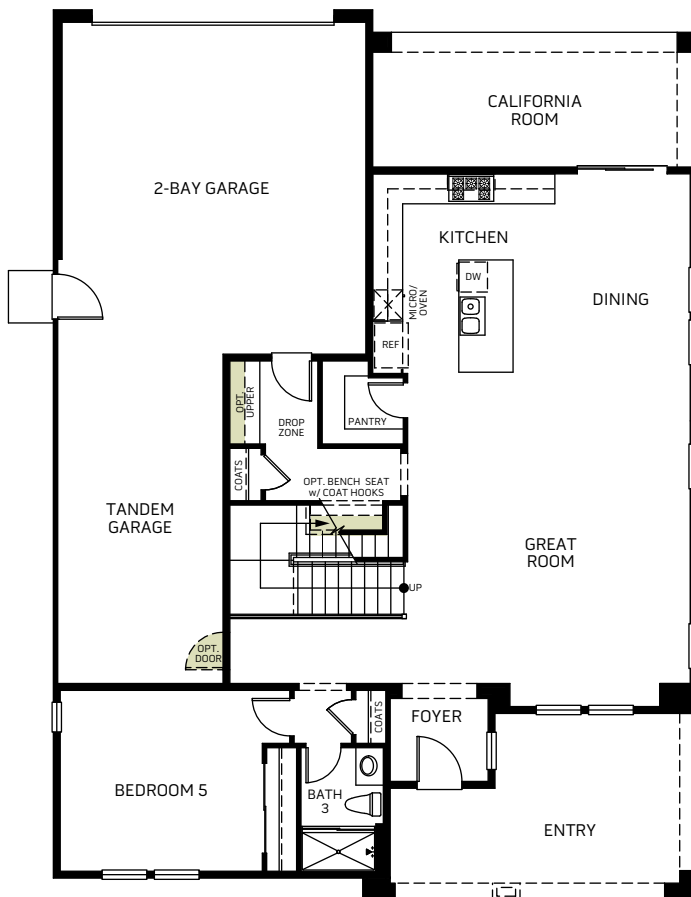


C - Craftsman

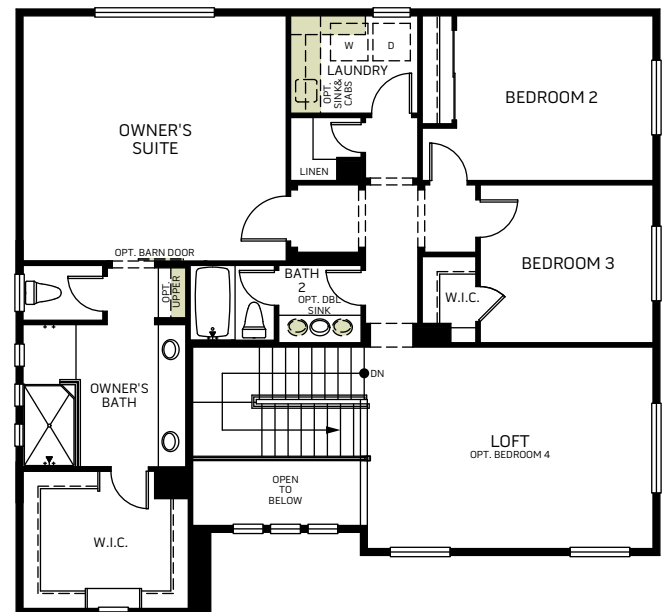


D - Modern Prairie

Two Story • 2,801 - 3,027 Sq. Ft • 5-6 Bedrooms • 3-4 Baths • Loft • Owner's Suite
2 Great Room • Kitchen with Island • Dining • Tandem Garage • 2-Bay Garage



FIRST FLOOR



SECOND FLOOR

MONTAGUE - 4650

OPTIONS



A - Stucco Bungalow



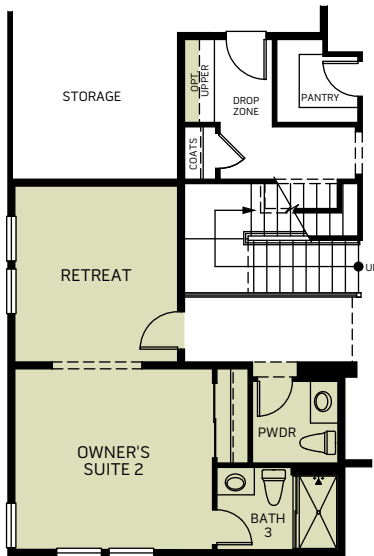
B - Farmhouse



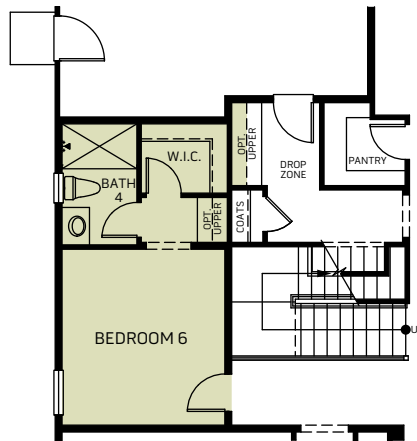
C - Craftsman



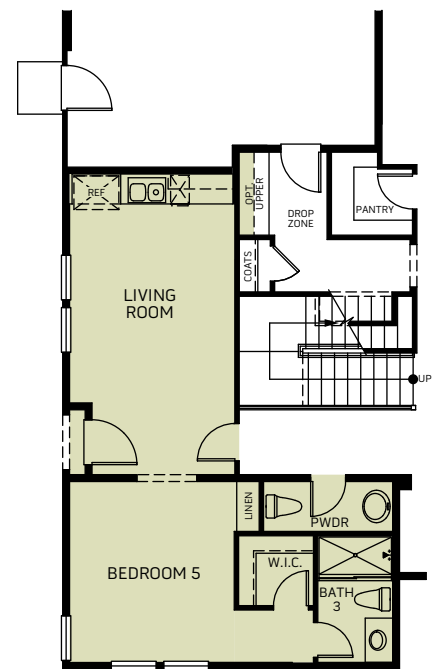
D - Modern Prairie



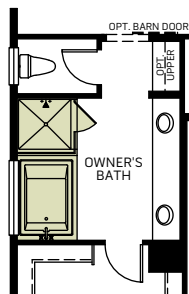
OPT. OWNER'S SUITE 2 & RETREAT
IN TANDEM GARAGE & DEN
+126 Sq. Ft.



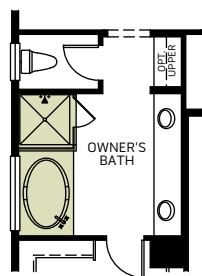
OPT. BEDROOM 6 & BATH 4 IN TANDEM
+233 Sq. Ft.



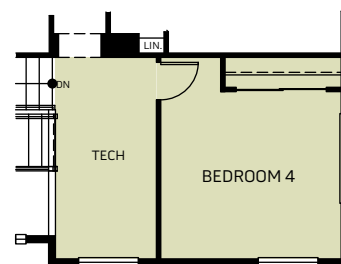
OPT. EN-SUITE IN BEDROOM 5 & TANDEM
+226 Sq. Ft.



OPT. WALK-IN SHOWER
IN OWNER'S BATH



OPT. SHOWER/ TUB
IN OWNER'S BATH



OPT. BEDROOM 4 IN LOFT