

WoodsideHomes.com

Let's get you home.

# Cottonwood Creek

At The Preserve

THE SAGEBRUSH 5042



A - Traditional Prairie

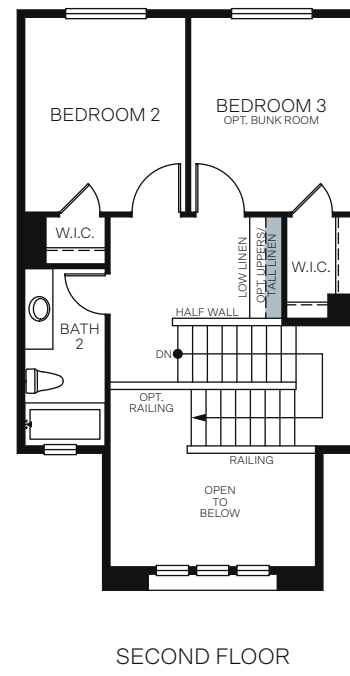
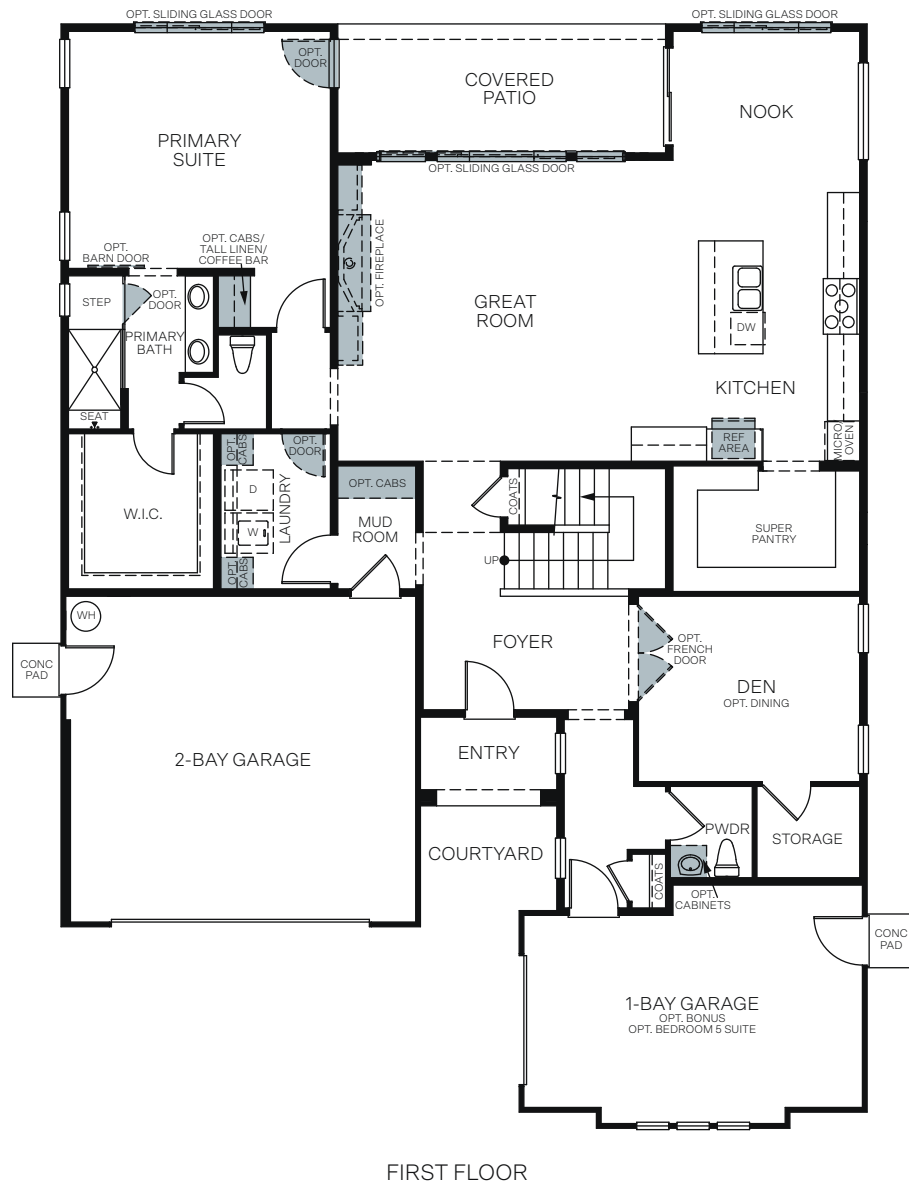


B - Modern Prairie

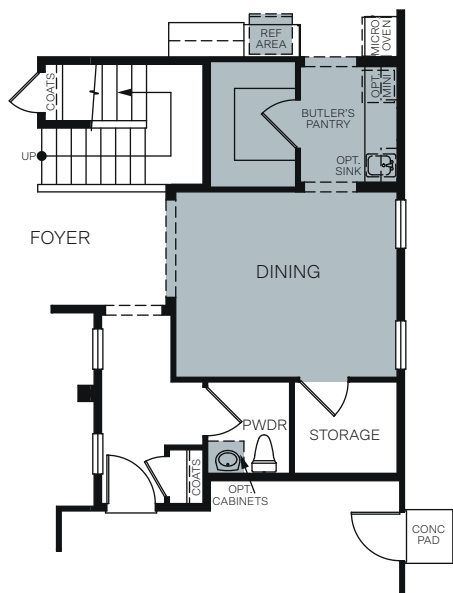


C - Artisan Prairie

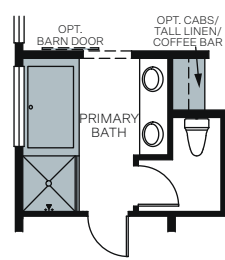
TWO STORY 2,514 SQ. FT.



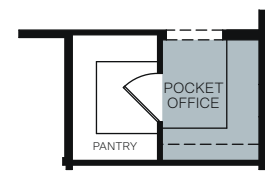
OPTIONS



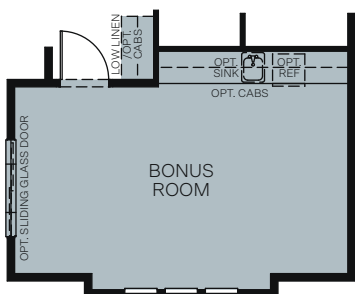
OPT. DINING WITH BUTLER'S PANTRY ILO DEN



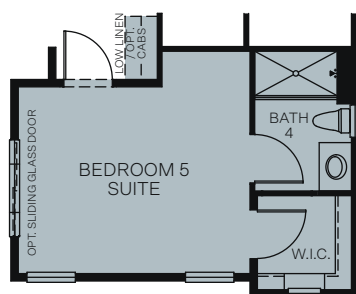
OPT. BATH/SHOWER AT PRIMARY BATH



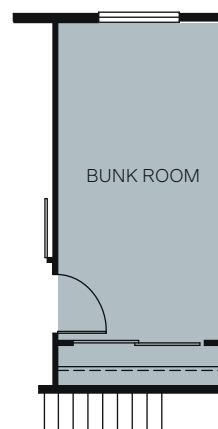
OPT. POCKET OFFICE ILO SUPER PANTRY



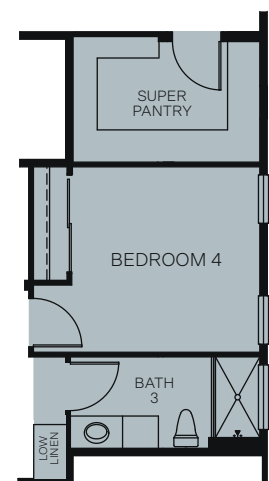
OPT. BONUS ROOM ILO SINGLE BAY GARAGE +299 Sq. Ft.



OPT. BEDROOM 5 SUITE ILO SINGLE BAY GARAGE +299 Sq. Ft.



OPT. BUNK ROOM ILO BEDROOM 3



OPT. BEDROOM 4 ILO DINING

