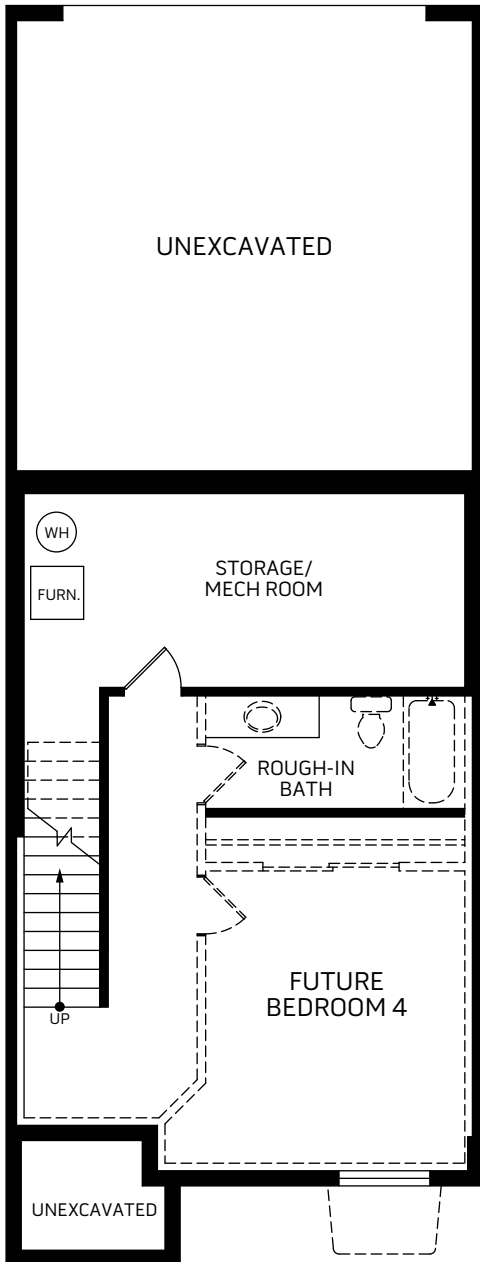
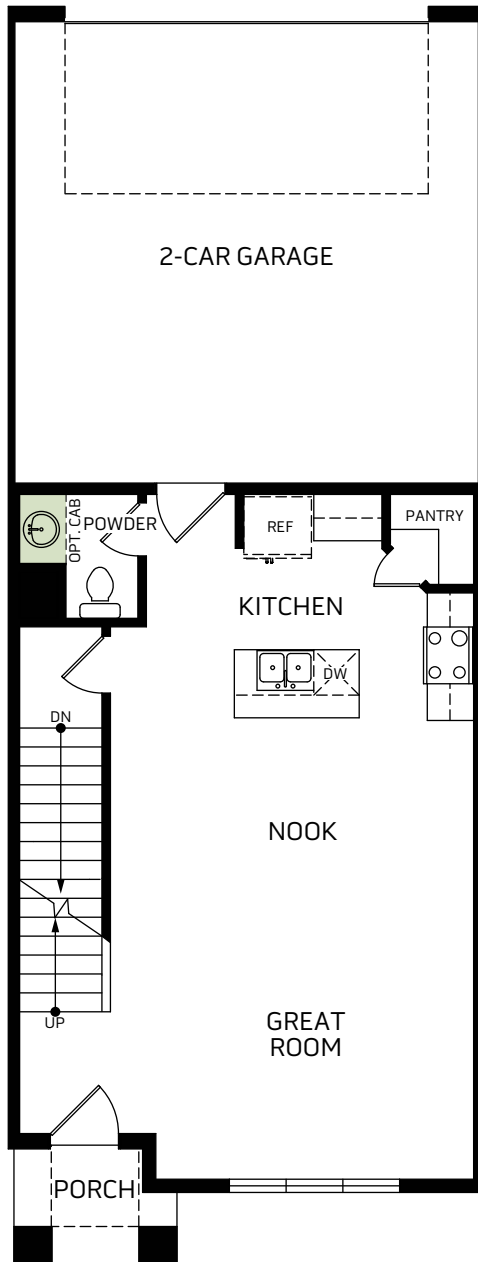


Mckinley

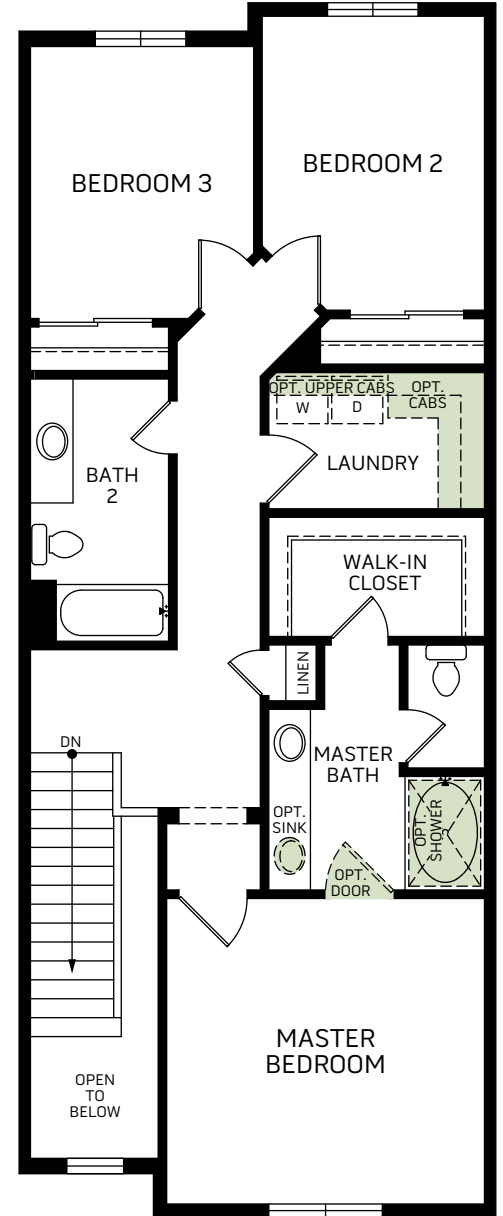
Two-story • 1,644 Finished Sq. Ft. • 2,237 Total Sq. Ft. • 3-4 Bedrooms • 2.5-3.5 Baths
Great Room • 2 Car Garage



BASEMENT
593 Sq. Ft.



FIRST FLOOR
643 Sq. Ft.



SECOND FLOOR
1,001 Sq. Ft.



Woodside Homes reserves the right to change elevations, specifications, materials and prices without notice. All square footages are approximate. Window location, porches, ceiling heights and room dimensions vary per elevation. The availability of certain options is subject to construction status and schedule. Optional features may be predetermined and included at additional cost on select homes. Renderings are artist's conception only.
Rev. 08/20

DAY RANCH



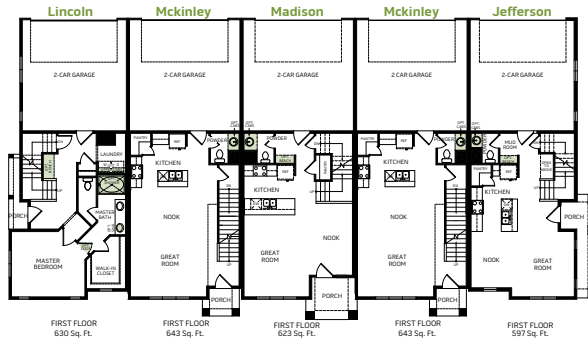
WoodsideHomes.com

1202 West Dun Way, Bluffdale, UT 84065

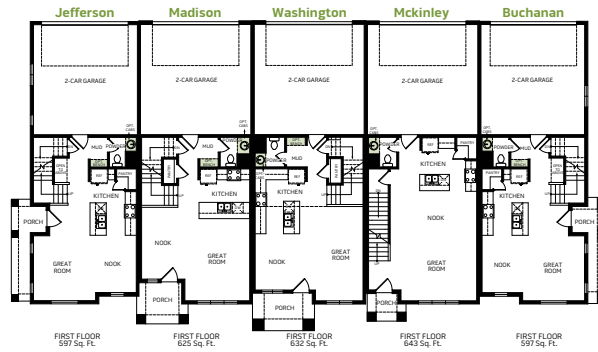
5 PLEX A, 5 PLEX B, 6 PLEX B & 7 PLEX



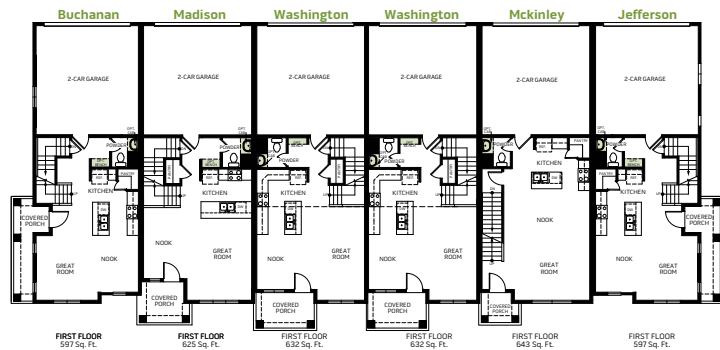
5 PLEX A



5 PLEX B



6 PLEX B



7 PLEX

