

Cypress

Two-story • 2,021 Sq. Ft. • 4 Bedrooms • 3 Baths • Side Entry Home
Open Great Room Living • Main Floor 4th Bedroom • Opt. Den • 2 Car Garage



Traditional (A)



Farmhouse (B)



Craftsman (C)



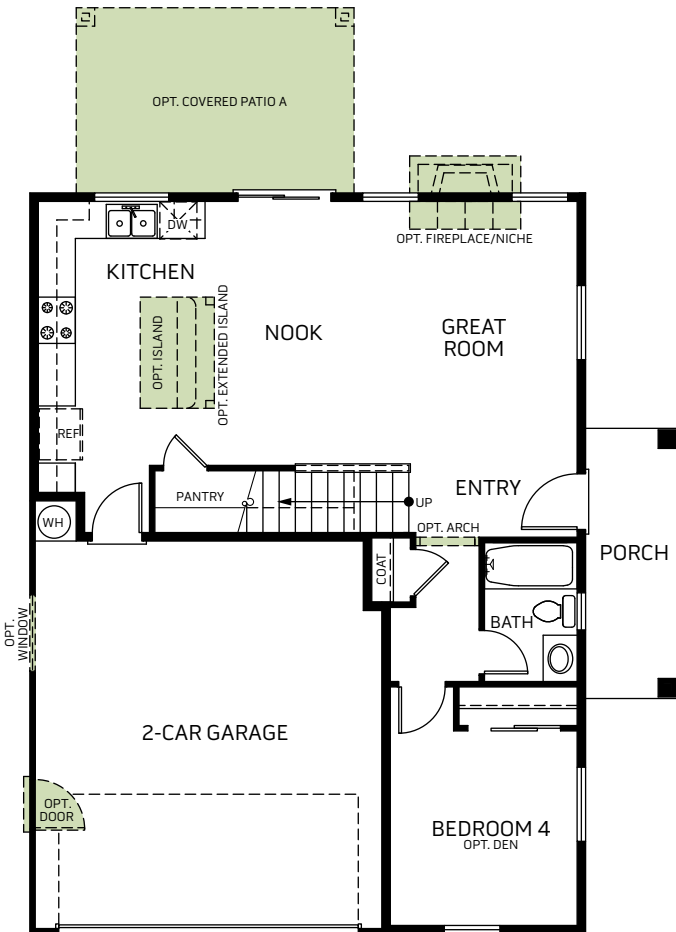
Prairie (D)

Woodside Homes reserves the right to change elevations, specifications, materials and prices without notice. All square footages are approximate. Window location, porches, ceiling heights and room dimensions vary per elevation. The availability of certain options is subject to construction status and schedule. Optional features may be predetermined and included at additional cost on select homes. Renderings are artist's conception only.
Rev. 03/21

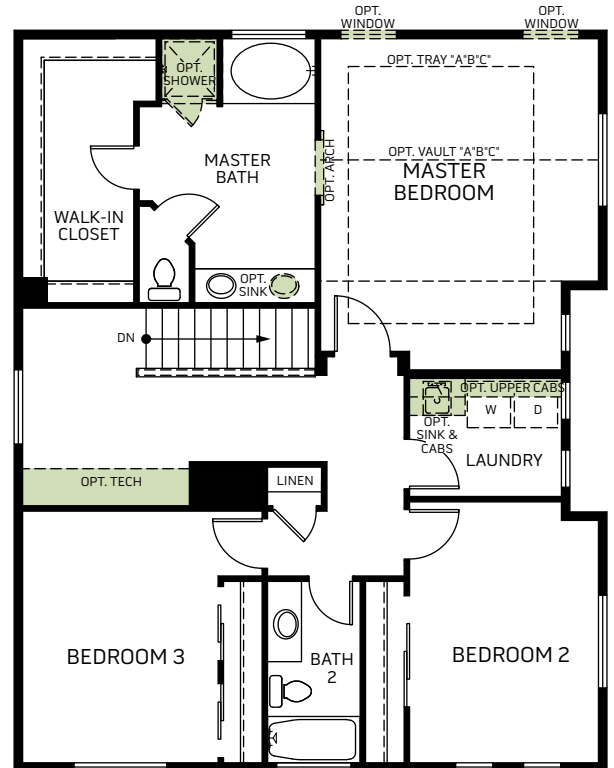


Cypress

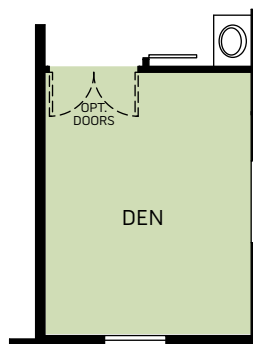
Two-story • 2,021 Sq. Ft. • 4 Bedrooms • 3 Baths • Side Entry Home
Open Great Room Living • Main Floor 4th Bedroom • Opt. Den • 2 Car Garage



FIRST FLOOR PLAN
795 Sq. Ft.



SECOND FLOOR PLAN
1,226 Sq. Ft.



OPT. DEN

Woodside Homes reserves the right to change elevations, specifications, materials and prices without notice. All square footages are approximate. Window location, porches, ceiling heights and room dimensions vary per elevation. The availability of certain options is subject to construction status and schedule. Optional features may be predetermined and included at additional cost on select homes. Renderings are artist's conception only.
Rev. 03/21

