

Palo Verde

At North Creek

KINGLET | PLAN 5033



Spanish Elevation (A)

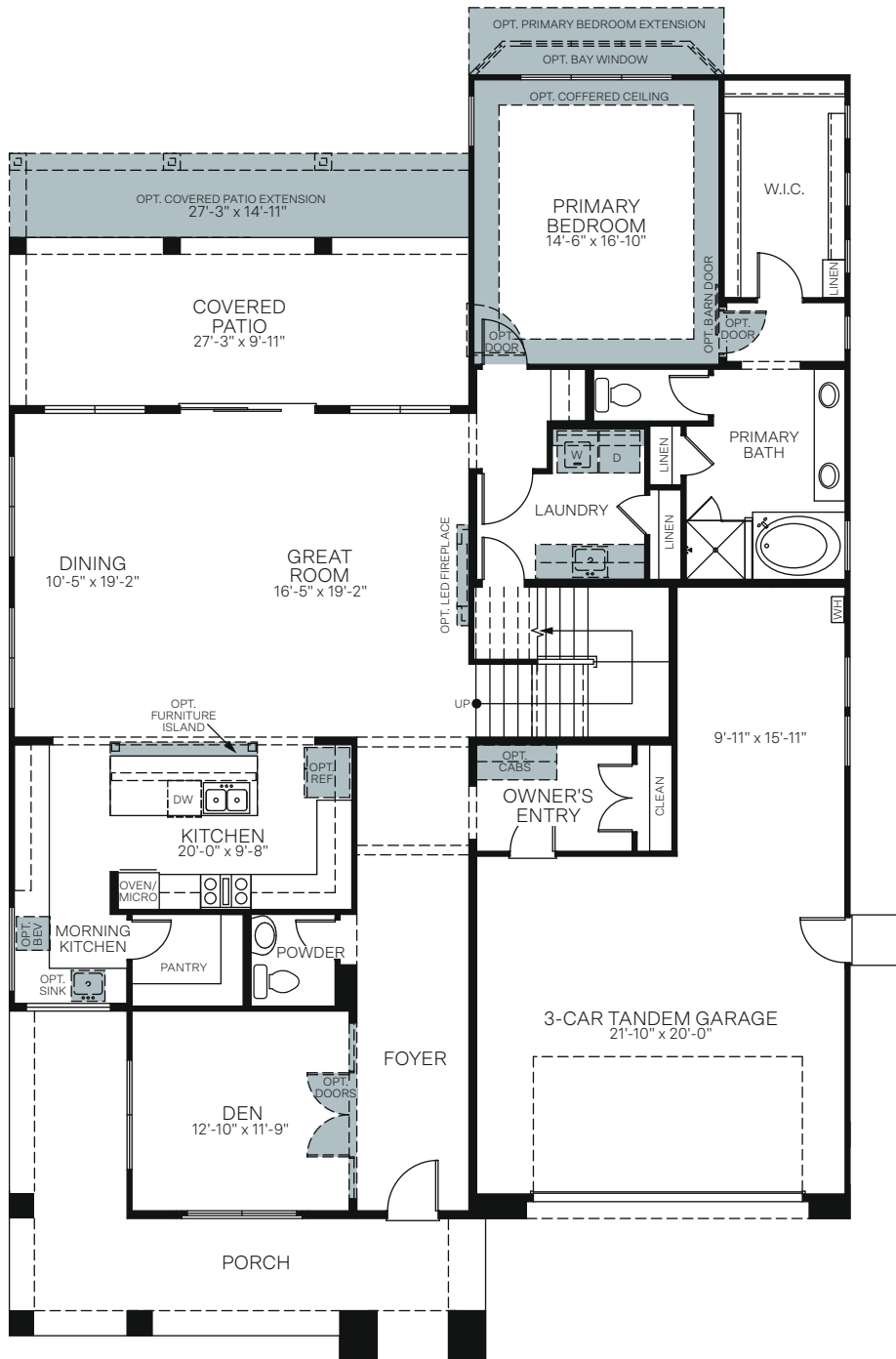


Craftsman Elevation (B)

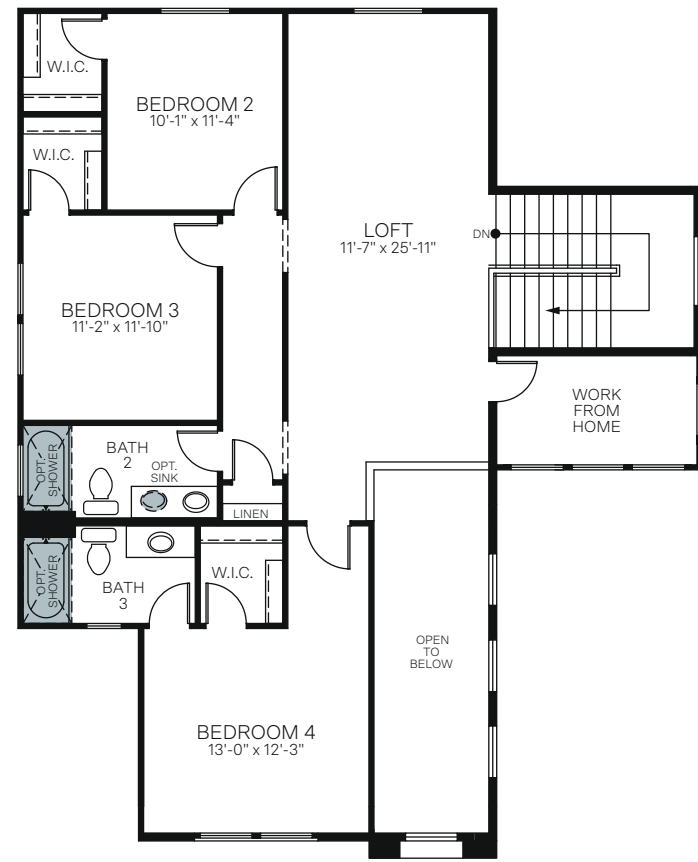


Western Prairie Elevation (C)

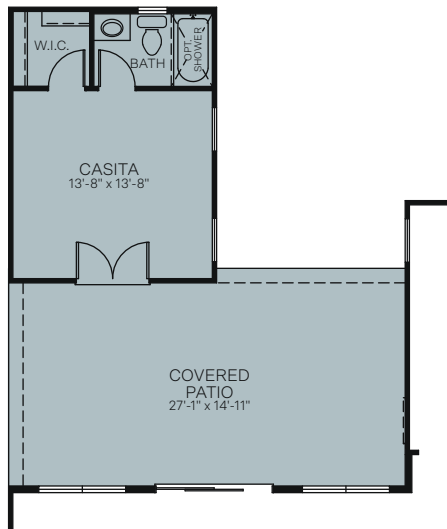
TWO-STORY • 3,321 SQ. FT.



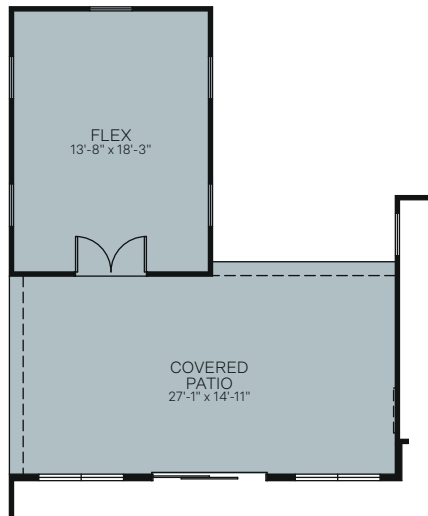
FIRST FLOOR



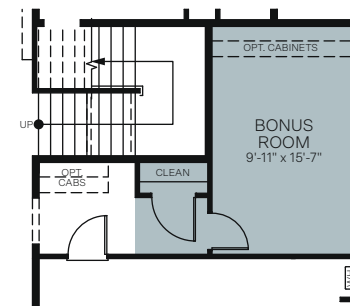
SECOND FLOOR



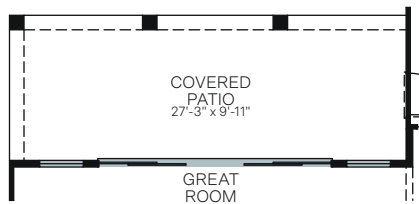
OPTIONAL CASITA
(OPTION INCLUDES EXTENDED COVERED PATIO)



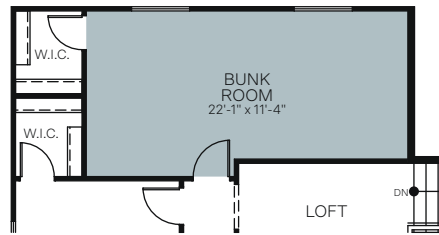
OPTIONAL FLEX
(OPTION INCLUDES EXTENDED COVERED PATIO)



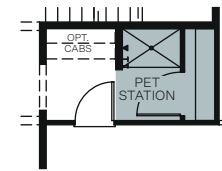
OPTIONAL BONUS ROOM



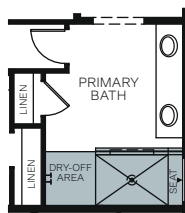
OPTIONAL 16 FT. CENTER SLIDING
GLASS DOOR AT GREAT ROOM



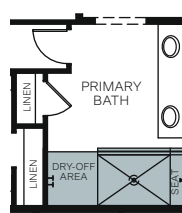
OPTIONAL BUNK ROOM



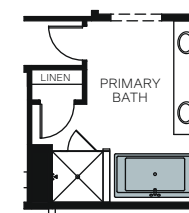
OPTIONAL PET STATION
AT OWNER'S ENTRY



OPTIONAL EXTENDED SHOWER WITH
HALF WALL AT PRIMARY BATHROOM



OPTIONAL EXTENDED SHOWER WITH
FULL GLASS AT PRIMARY BATHROOM



OPTIONAL FREESTANDING TUB AT
PRIMARY BATHROOM



Woodside Homes reserves the right to change floor plans, features, elevations, prices, materials and specifications without notice. All square footages and measurements are approximate. Please see Sales Professional for full details. 1/2023

