

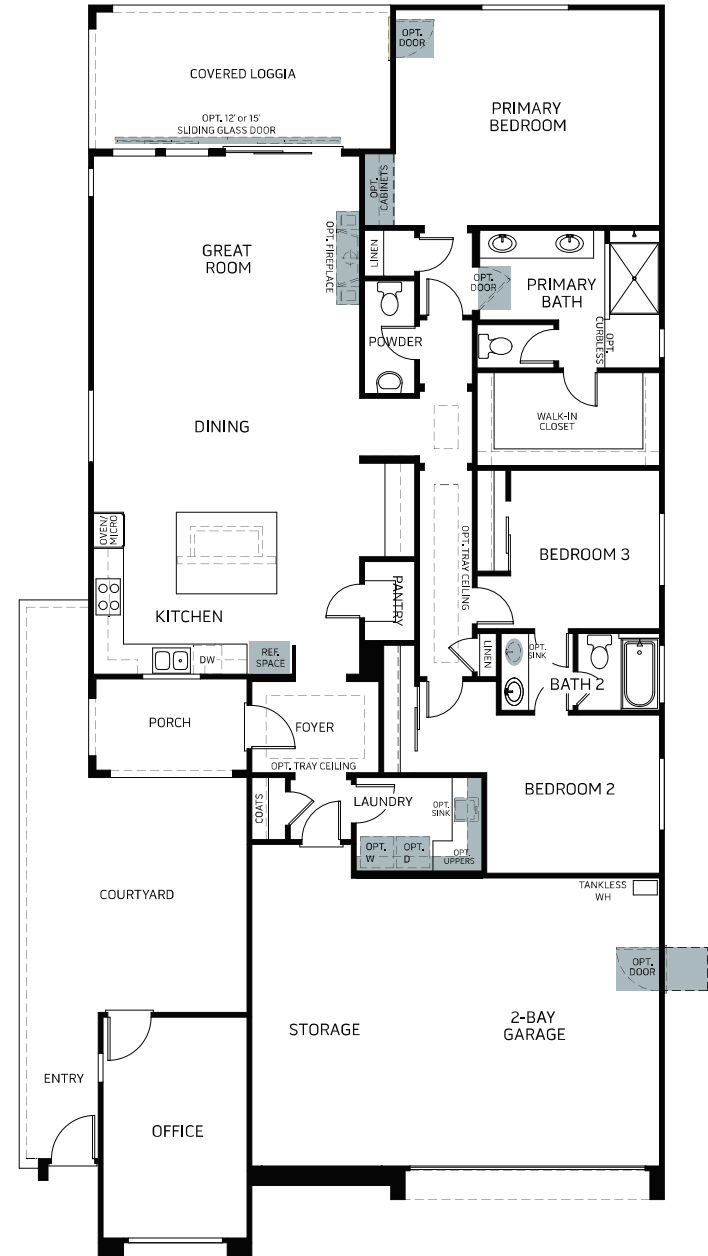
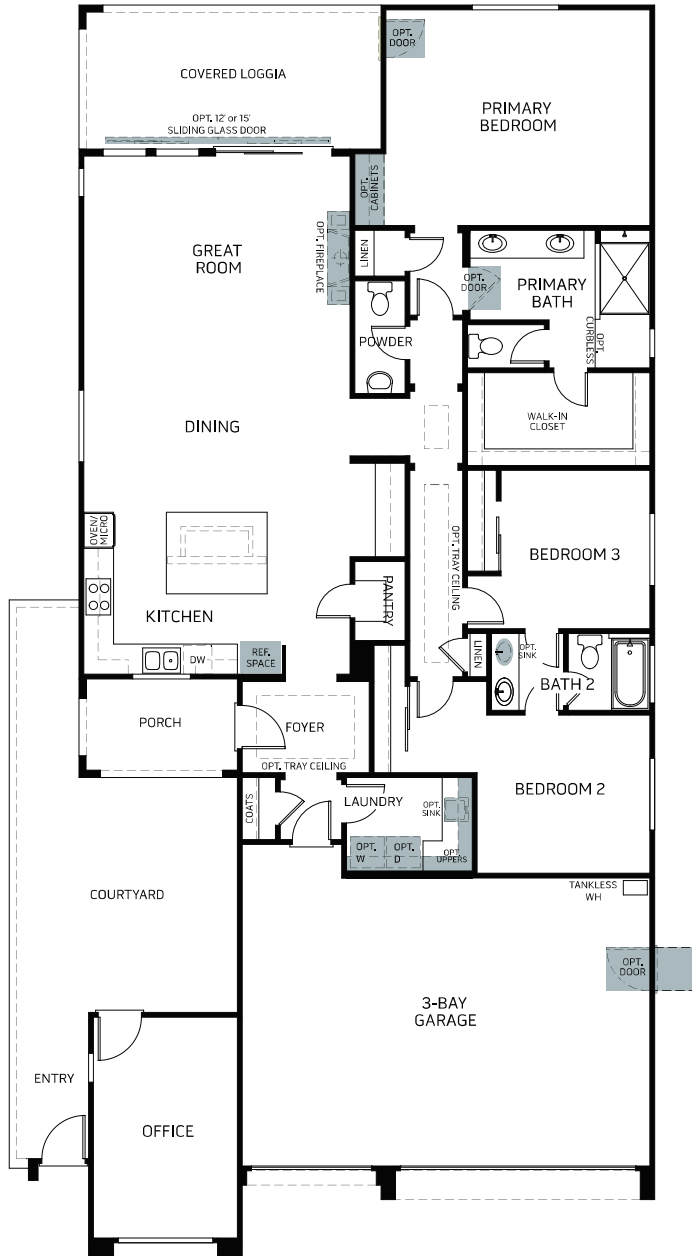
# Falcon Crest in Summerlin

KESTREL PLAN 3

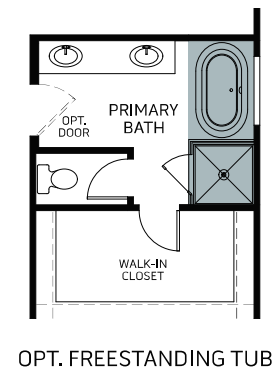
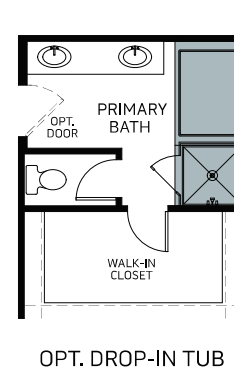
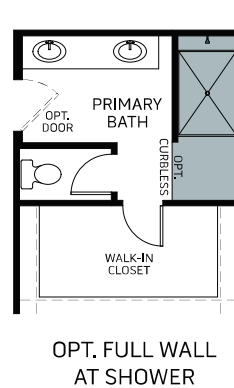
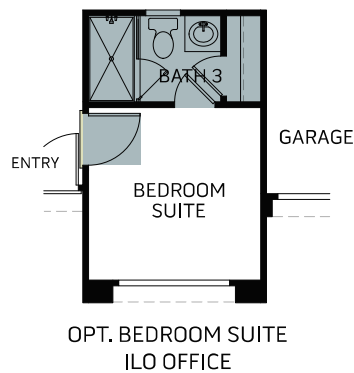
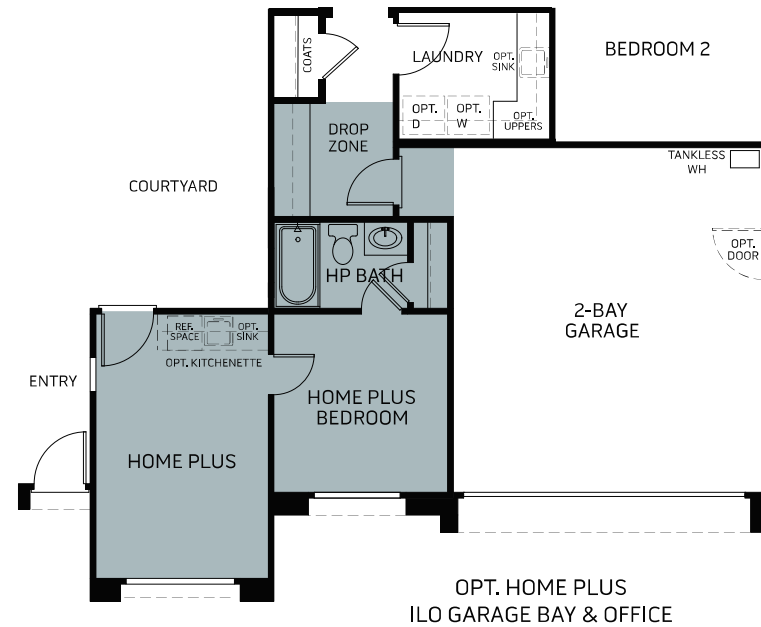
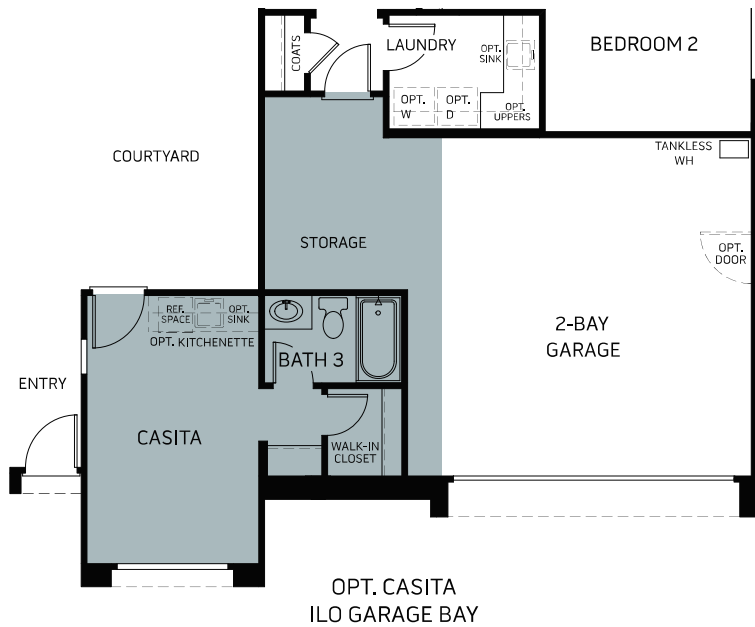


SINGLE STORY | 2,218 SQ. FT.

KESTREL PLAN 3 W/2-BAY GARAGE



# KESTREL PLAN 3 OPTIONAL FEATURES



Woodside Homes reserves the right to change floor plans, features, elevations, prices, materials and specifications without notice. All square footages and measurements are approximate. Please see Sales Professional for full details.  
MARCH2022

