

Majestic / 6042

Two-Story • 4,221 Sq. Ft. • 5 Bedrooms • 5.5 Baths • Great Room • Kitchen with Island • Walk-in Pantry • Morning Kitchen • Teen Room • Laundry • Owner's Entry • Covered Patio • 4-Bay Garage



Spanish (A)



Ranch (B)



Tuscan (C)

Woodside Homes reserves the right to change floor plans, maps, prices, and specifications without notice. Prices are subject to change without notice. The model information listed, including availability, floor plans, elevations, features, and other information are subject to change. Model home interior decorating, landscaping, fencing, and other amenities are for display purposes only. All renderings, floor plans, and maps are artist conceptions and are not intended to be an actual depiction of the buildings, fencing, driveways, or landscaping. Optional features may be included at additional cost and are subject to construction cut-off dates. All square foot measurements, elevations, features, and floor plans are approximate. This advertisement is for illustration purposes only and not part of a legal contract. Please see Sales Representative for full details, and additional information about options shown dashed on base floor plan. Woodside Homes Sales AZ, LLC. 08/2021



Elegance
at Eastmark



SECOND FLOOR

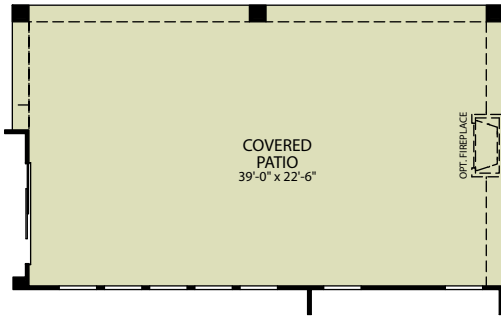
Woodside Homes reserves the right to change floor plans, maps, prices, and specifications without notice. Prices are subject to change without notice. The model information listed, including availability, floor plans, elevations, features, and other information are subject to change. Model home interior decorating, landscaping, fencing, and other amenities are for display purposes only. All renderings, floor plans, and maps are artist conceptions and are not intended to be an actual depiction of the buildings, fencing, driveways, or landscaping. Optional features may be included at additional cost and are subject to construction cut-off dates. All square foot measurements, elevations, features, and floor plans are approximate. This advertisement is for illustration purposes only and not part of a legal contract. Please see Sales Representative for full details, and additional information about options shown dashed on base floor plan. Woodside Homes Sales AZ, LLC. 08/2021



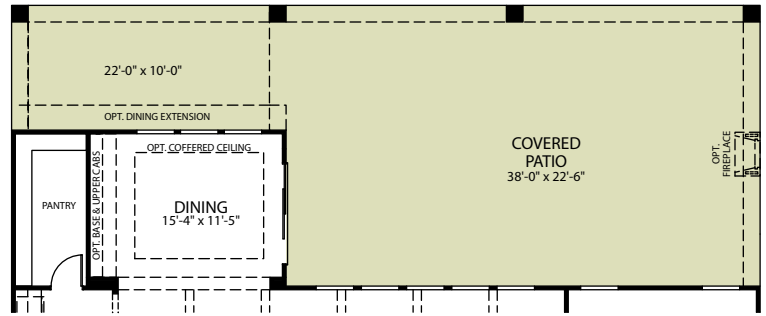
WoodsideHomes.com/Arizona



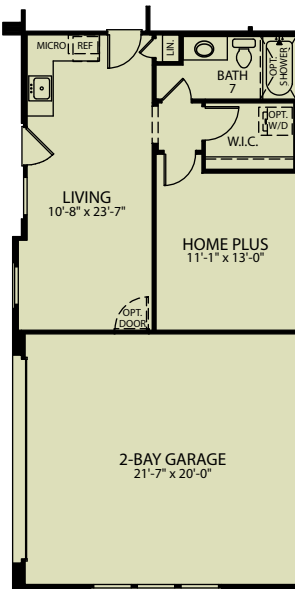
OPTIONS



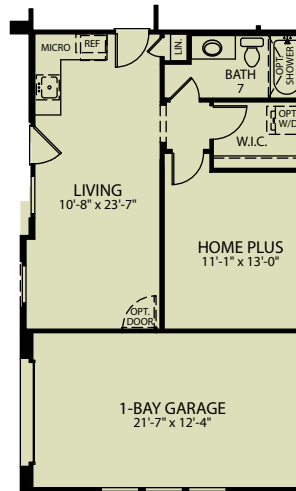
OPTIONAL COVERED PATIO EXTENSION 1



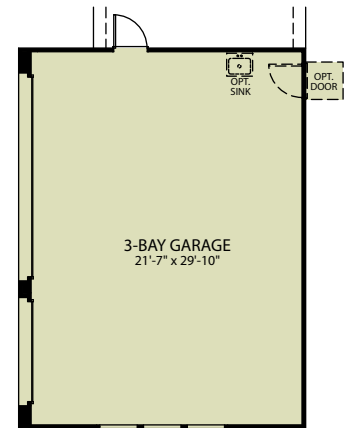
OPTIONAL COVERED PATIO EXTENSION 2



OPTIONAL HOME PLUS
WITH 2-BAY GARAGE
(not available with home plus option)
(not available with 3-bay garage option)



OPTIONAL HOME PLUS
(not available with home plus 2-bay garage)
(not available with 3-bay garage option)



OPTIONAL 3-BAY GARAGE
(not available with home plus options)

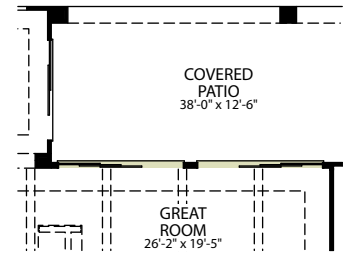
OPTIONS



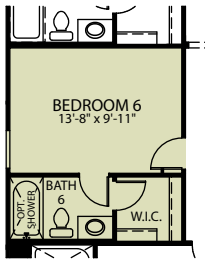
OPTIONAL MASTER RETREAT
-PARTIALLY ENCLOSED



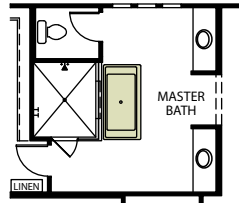
OPTIONAL MASTER RETREAT



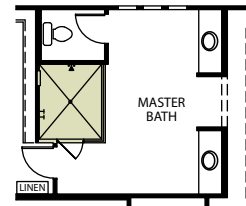
OPTIONAL MULTI SLIDE DOORS



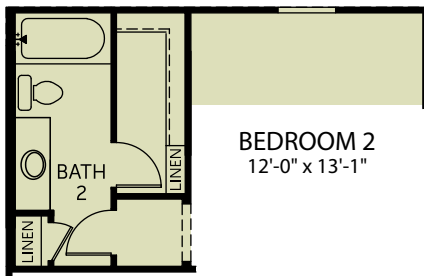
OPTIONAL BEDROOM 6
ILO TEEN ROOM



OPTIONAL FREE STANDING TUB



OPTIONAL FULL GLASS SHOWER



OPT. BEDROOM 2 EXTENSION
WITH OPT. DINING EXTENSION

Woodside Homes reserves the right to change floor plans, maps, prices, and specifications without notice. Prices are subject to change without notice. The model information listed, including availability, floor plans, elevations, features, and other information are subject to change. Model home interior decorating, landscaping, fencing, and other amenities are for display purposes only. All renderings, floor plans, and maps are artist conceptions and are not intended to be an actual depiction of the buildings, fencing, driveways, or landscaping. Optional features may be included at additional cost and are subject to construction cut-off dates. All square foot measurements, elevations, features, and floor plans are approximate. This advertisement is for illustration purposes only and not part of a legal contract. Please see Sales Representative for full details, and additional information about options shown dashed on base floor plan. Woodside Homes Sales AZ, LLC. 08/2021