

Palo Verde

At North Creek

GOLDFINCH | PLAN 5024



Spanish Elevation (A)

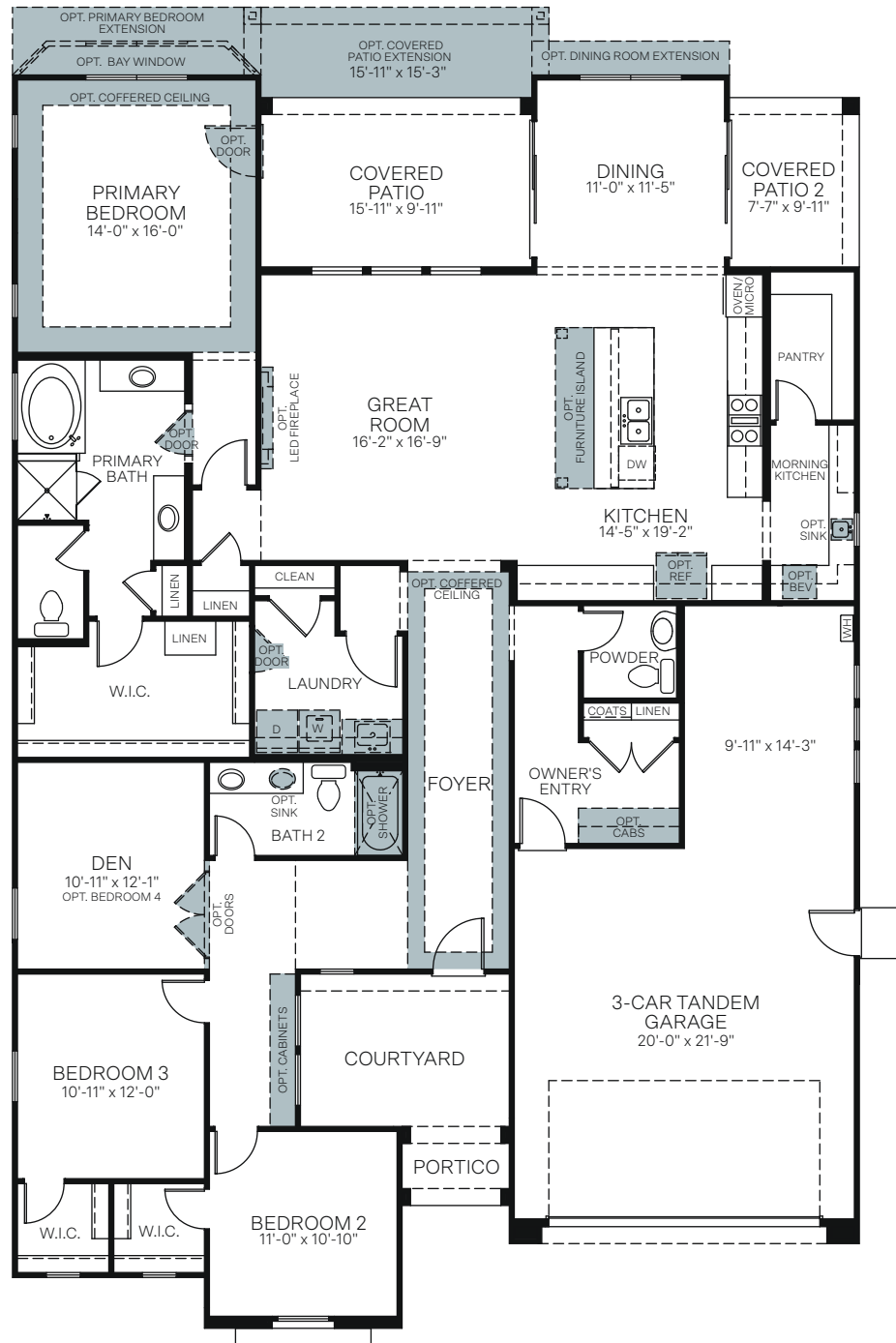


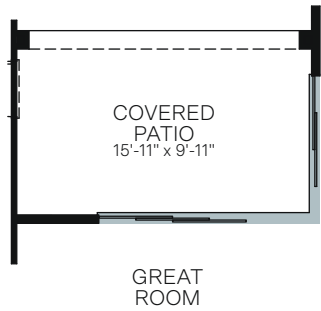
Craftsman Elevation (B)



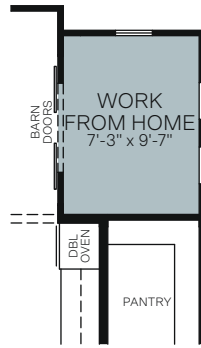
Western Prairie Elevation (C)

SINGLE-STORY • 2,475 SQ. FT.

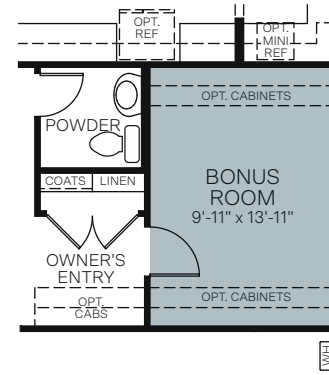




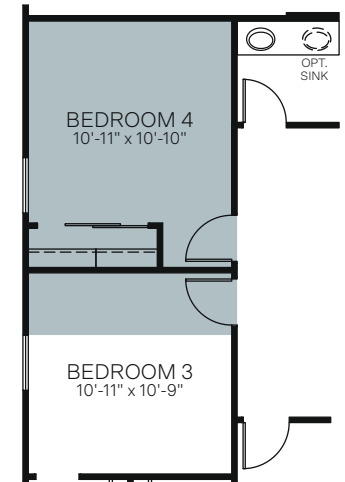
OPTIONAL CORNER SLIDING GLASS DOOR AT GREAT ROOM



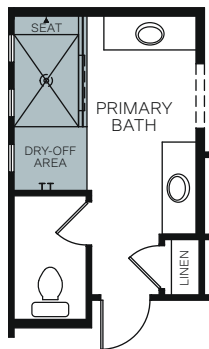
OPTIONAL WORK FROM HOME ILO COVERED PATIO 2



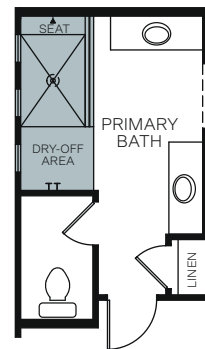
OPTIONAL BONUS ROOM



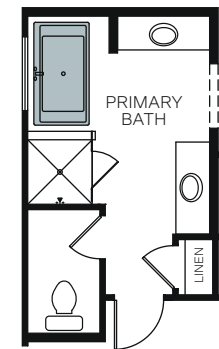
OPTIONAL BEDROOM 4 ILO DEN



OPTIONAL EXTENDED SHOWER WITH HALF WALL AT PRIMARY BATHROOM



OPTIONAL EXTENDED SHOWER WITH FULL GLASS AT PRIMARY BATHROOM



OPTIONAL FREESTANDING TUB AT PRIMARY BATHROOM



Woodside Homes reserves the right to change floor plans, features, elevations, prices, materials and specifications without notice. All square footages and measurements are approximate. Please see Sales Professional for full details. 1/2023

