

Two-Story • 4,059 Sq. Ft. • 5 Bedrooms • 5.5 Baths • Den • Great Room • Kitchen with Nook • Morning Kitchen • Walk-In Pantry • Laundry • Owner's Entry • Covered Patio • 4 Car Tandem Garage



**Ranch (A)**



**Craftsman (B)**



**Cottage (C)**

Woodside Homes reserves the right to change floor plans, maps, prices, and specifications without notice. Prices are subject to change without notice. The model information listed, including availability, floor plans, elevations, features, and other information are subject to change. Model home interior decorating, landscaping, fencing, and other amenities are for display purposes only. All renderings, floor plans, and maps are artist conceptions and are not intended to be an actual depiction of the buildings, fencing, driveways, or landscaping. Optional features may be included at additional cost and are subject to construction cut-off dates. All square foot measurements, elevations, features, and floor plans are approximate. This advertisement is for illustration purposes only and not part of a legal contract. Please see Sales Representative for full details, and additional information about options shown dashed on base floor plan. Woodside Homes Sales AZ, LLC. 02/2021



#TranquilityAtEastmark

WoodsideHomes.com/Arizona





## FLOOR PLAN

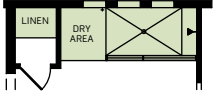
Woodside Homes reserves the right to change floor plans, maps, prices, and specifications without notice. Prices are subject to change without notice. The model information listed, including availability, floor plans, elevations, features, and other information are subject to change. Model home interior decorating, landscaping, fencing, and other amenities are for display purposes only. All renderings, floor plans, and maps are artist conceptions and are not intended to be an actual depiction of the buildings, fencing, driveways, or landscaping. Optional features may be included at additional cost and are subject to construction cut-off dates. All square foot measurements, elevations, features, and floor plans are approximate. This advertisement is for illustration purposes only and not part of a legal contract. Please see Sales Representative for full details, and additional information about options shown dashed on base floor plan. Woodside Homes Sales AZ, LLC. 02/2021



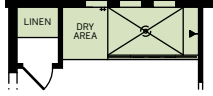
#TranquilityAtEastmark  
WoodsideHomes.com/Arizona



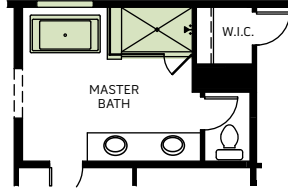
## OPTIONS



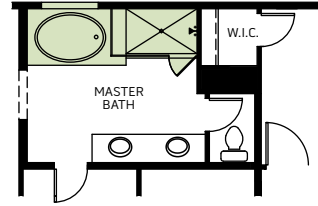
OPTIONAL EXTENDED SHOWER  
WITH FULL GLASS



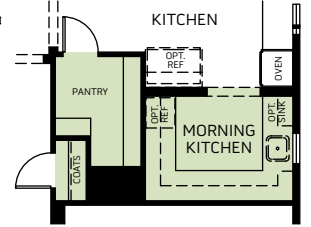
OPTIONAL EXTENDED  
SHOWER WITH HALF WALL  
AND GLASS



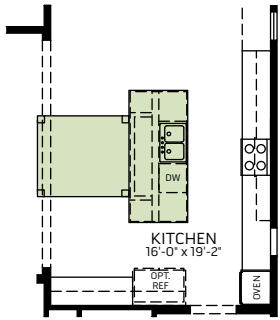
OPTIONAL FREESTANDING TUB



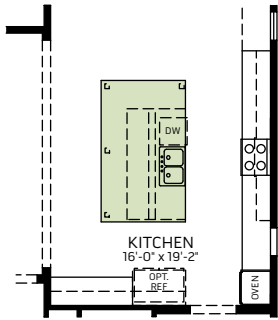
OPTIONAL SEPARATE TUB  
AND SHOWER



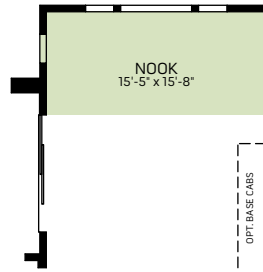
OPTIONAL EXECUTIVE  
MORNING KITCHEN  
(not available with dining option)



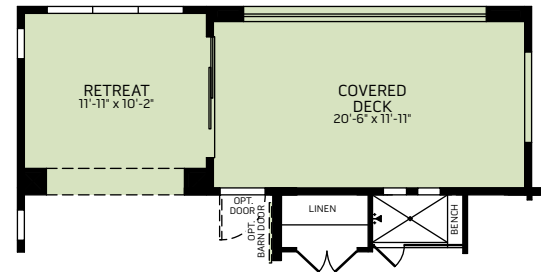
OPTIONAL ISLAND TABLE



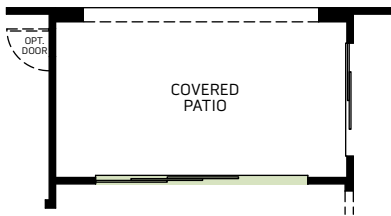
OPTIONAL FURNITURE ISLAND



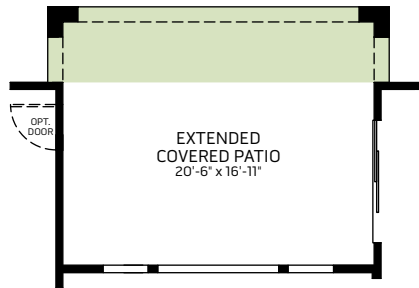
OPTIONAL EXTENDED NOOK



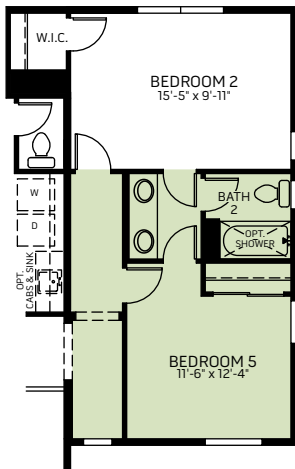
OPTIONAL RETREAT AND COVERED DECK  
AT MASTER BEDROOM



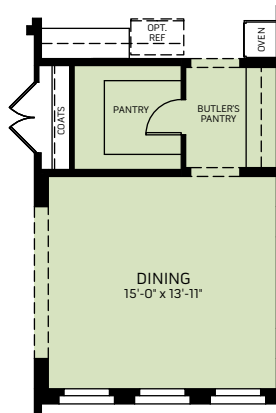
OPTIONAL 15 FT MULTI-SLIDE DOOR  
AT GREAT ROOM



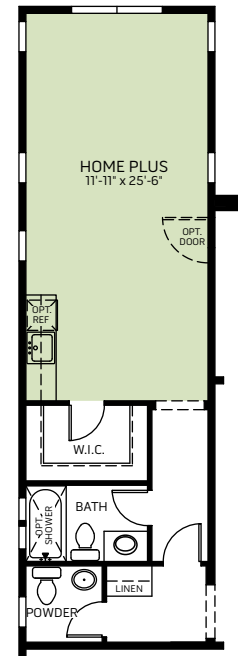
OPTIONAL EXTENDED COVERED PATIO



OPTIONAL BEDROOM 5

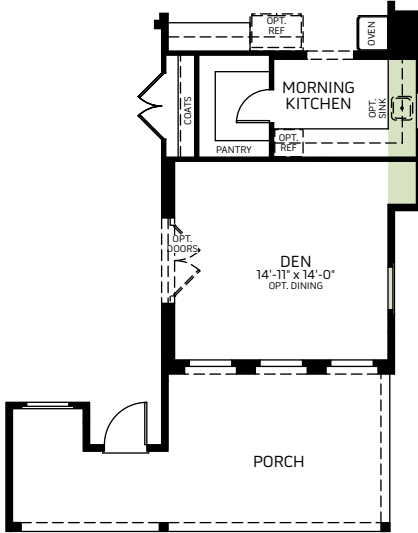


OPTIONAL DINING  
(not available with executive morning kitchen option)

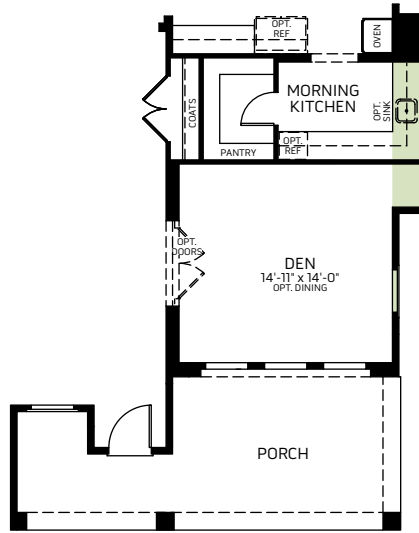


OPTIONAL HOME PLUS

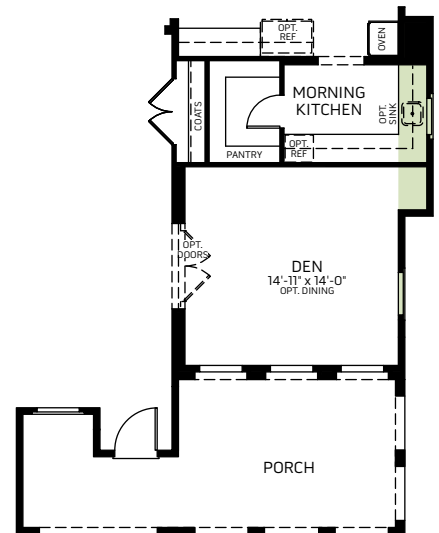
## OPTIONS



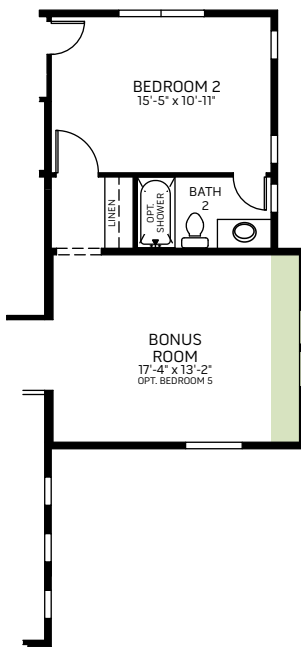
OPTIONAL CORNER LOT  
ELEVATION A



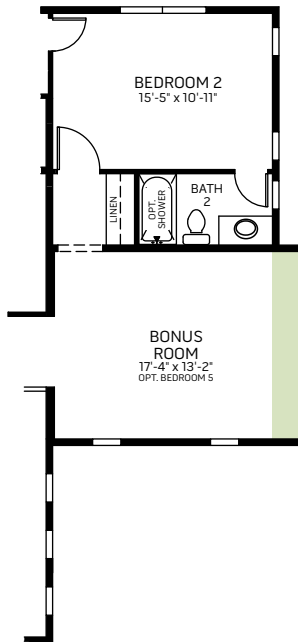
OPTIONAL CORNER LOT  
ELEVATION B



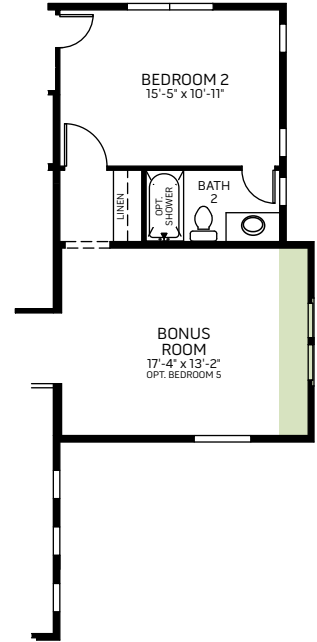
OPTIONAL CORNER LOT  
ELEVATION C



OPTIONAL CORNER LOT  
ELEVATION A



OPTIONAL CORNER LOT  
ELEVATION B



OPTIONAL CORNER LOT  
ELEVATION C