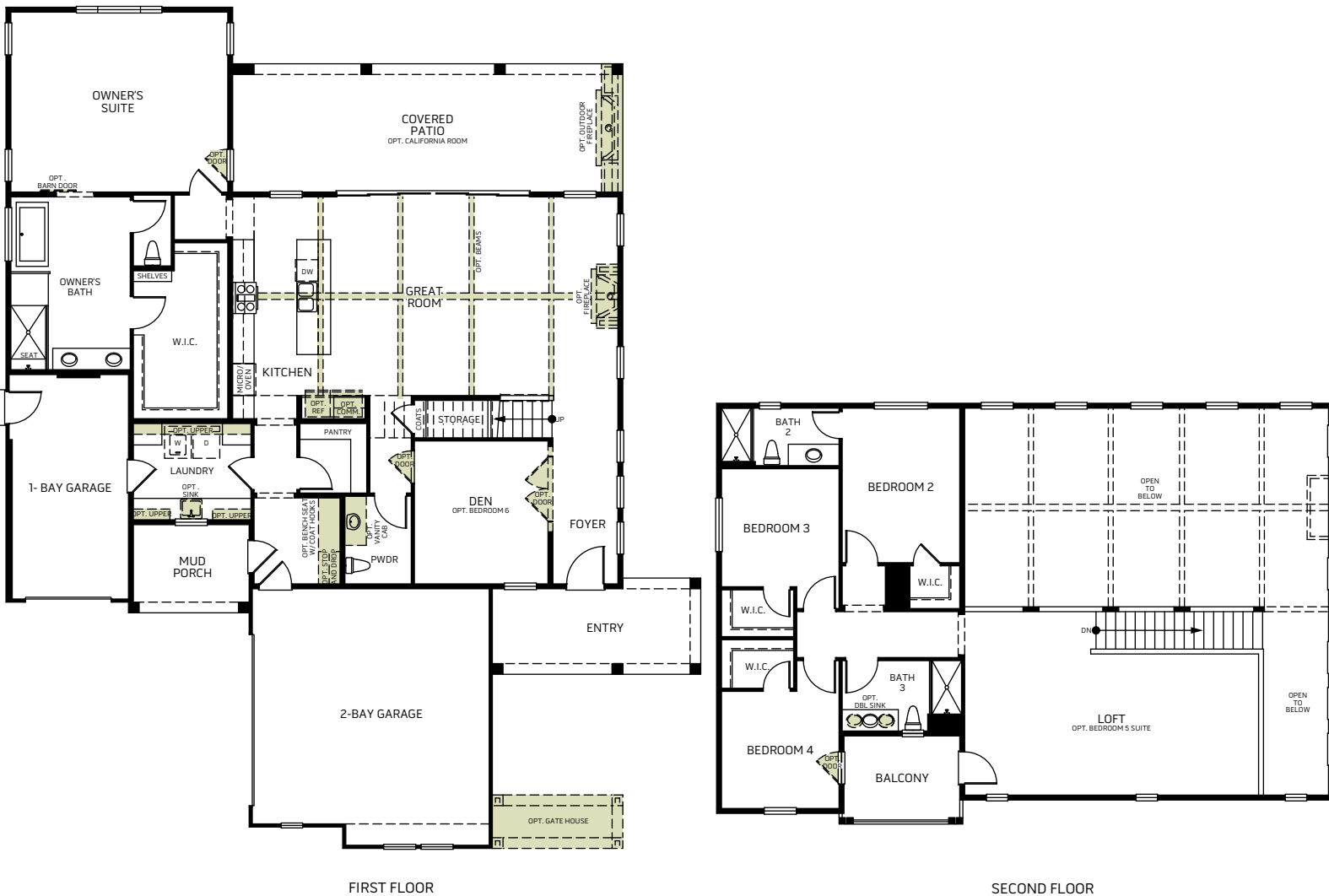


THE SUN PORCH - 6530

Two Story • 3,466 Sq. Ft • 4-6 Bedrooms • 3.5-5 Baths
Great Room • Kitchen with Island • Den • Loft • 3-Bay Garage

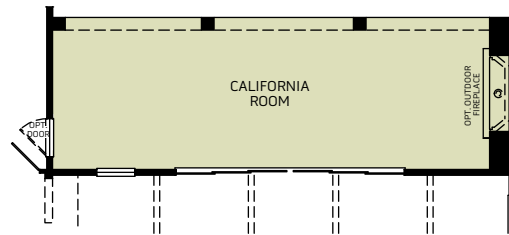


Woodside Homes reserves the right to change elevations, specifications, materials and prices without notice. All square footages are approximate. Window location, porches, ceiling heights and room dimensions vary per elevation. The availability of certain options is subject to construction status and schedule. Optional features may be predetermined and included at additional cost on select homes. Renderings are artist's conception only.

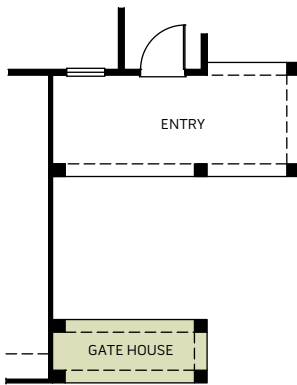


THE SUN PORCH - 6530

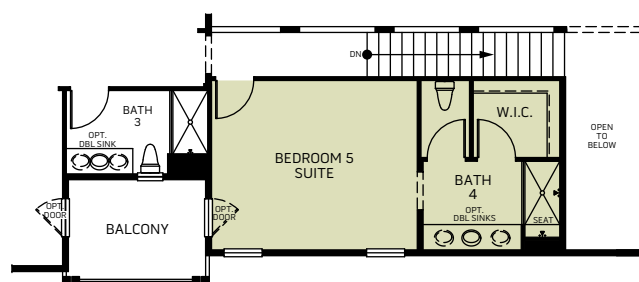
OPTIONS



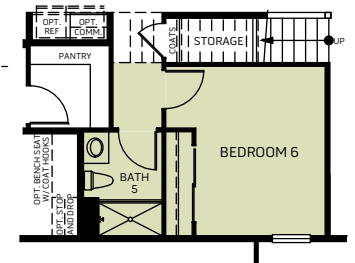
OPT. CALIFORNIA ROOM



OPT. GATE HOUSE



OPT. BEDROOM 5 SUITE ILO LOFT



OPT. BEDROOM 6 BATH 5 AT DEN

Woodside Homes reserves the right to change elevations, specifications, materials and prices without notice. All square footages are approximate. Window location, porches, ceiling heights and room dimensions vary per elevation. The availability of certain options is subject to construction status and schedule. Optional features may be predetermined and included at additional cost on select homes. Renderings are artist's conception only.

