

WoodsideHomes.com

Let's get you home.

Bayview At Shoreline

BIRCH



Traditional (A)



Farmhouse (B)

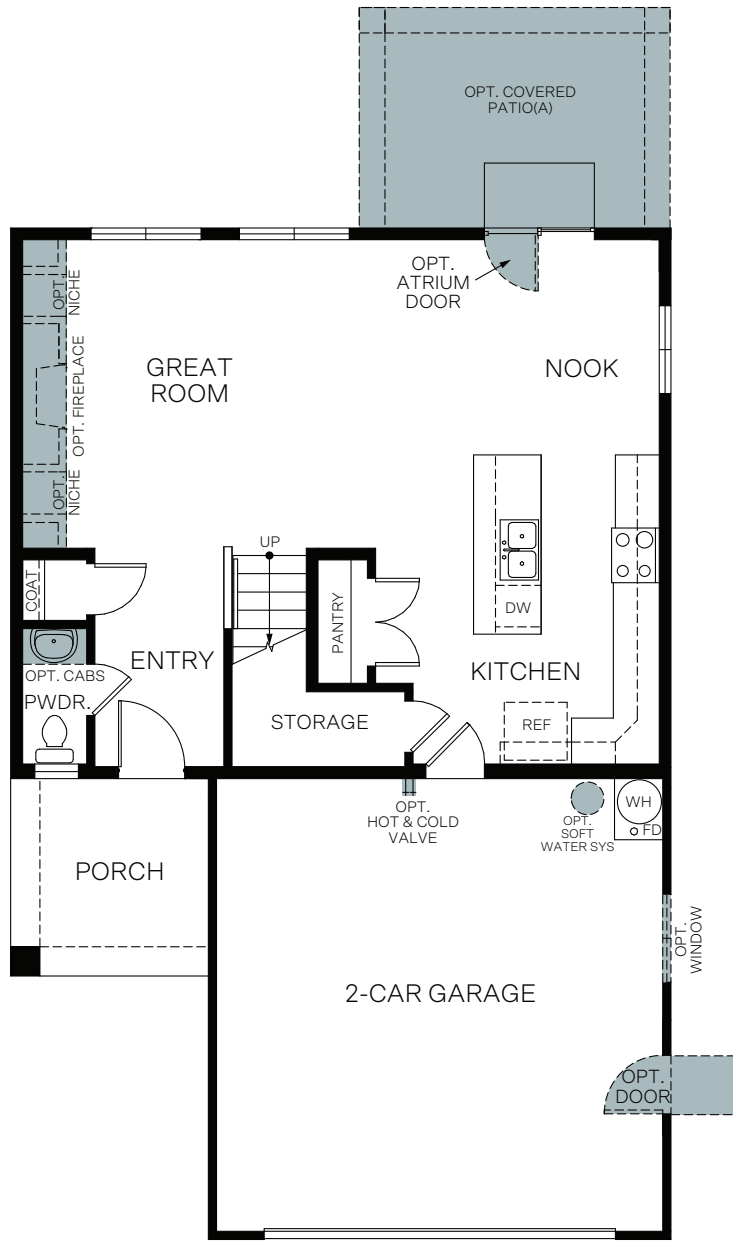


Craftsman (C)

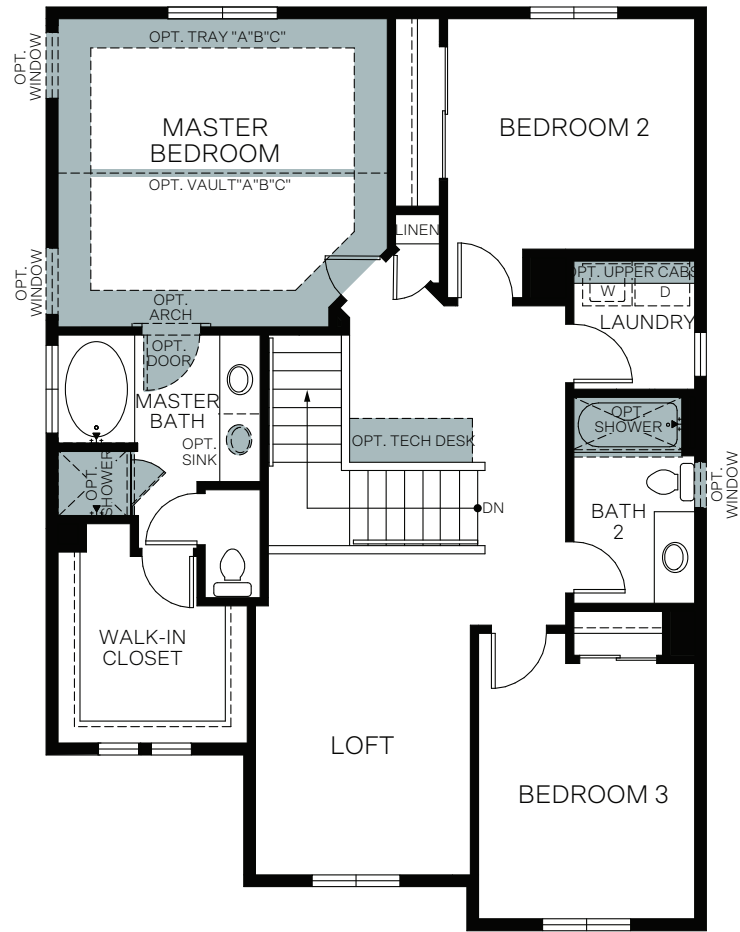


Prairie (D)

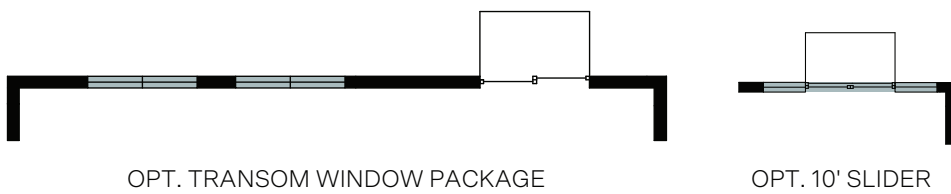
TWO-STORY 1,865 SQ. FT.



FIRST FLOOR
750 Sq.Ft.

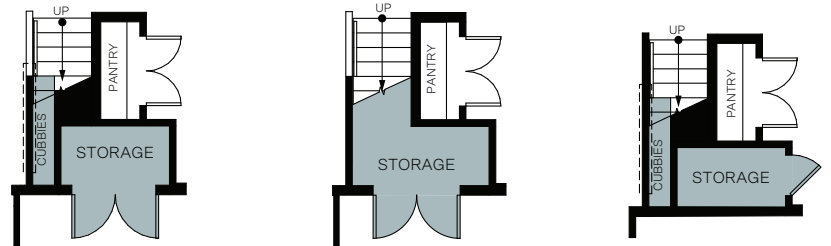


SECOND FLOOR
1,115 Sq.Ft.



OPT. EXTENDED NOOK W/ 10' SLIDER
Adds: 65 Sq.Ft.

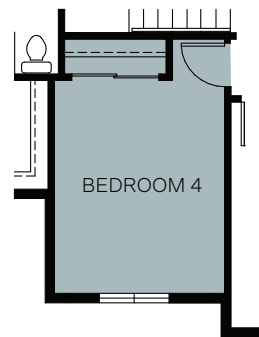
OPT. EXTENDED NOOK
Adds: 65 Sq.Ft.



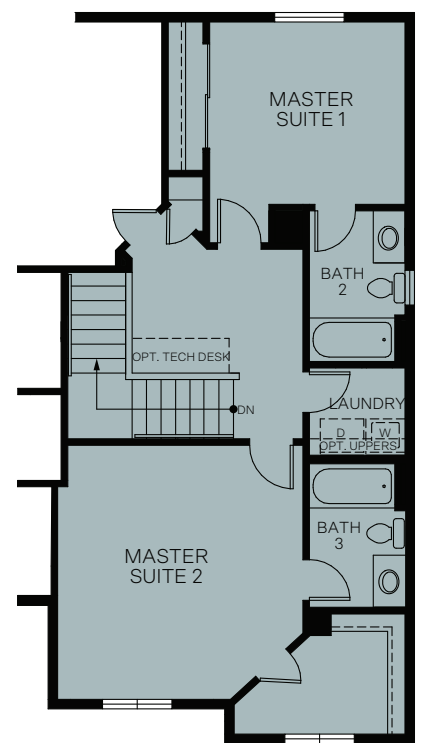
OPT. STORAGE AT GARAGE W/CUBBIES

OPT. STORAGE AT GARAGE

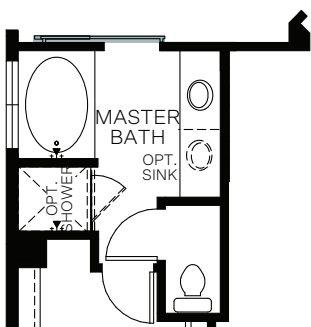
OPT. STORAGE AT STAIRS W/CUBBIES



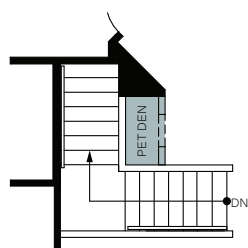
OPT. BEDROOM 4



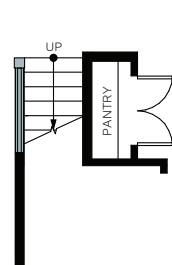
OPT. MASTER SUITES



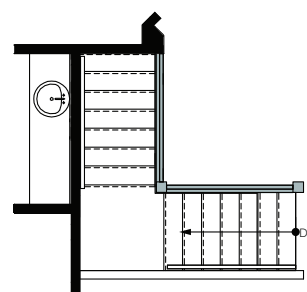
OPT. BARN DOOR AT MASTER BATH



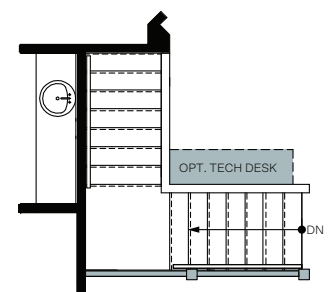
OPT. PET DEN



OPT. RAILING 1



OPT. RAILING 2



OPT. RAILING 3

