

Vista - Plan 1

Cascade Landing at Silverwood



Bungalow (B)



Farmhouse (C)



Spanish (A)

2,220 Sq Ft | 3 - 4 Bed | 2.5 - 4.5 Bath | 2 - 3 Car Garage
Single Story | Home Plus Suite & Casita Options



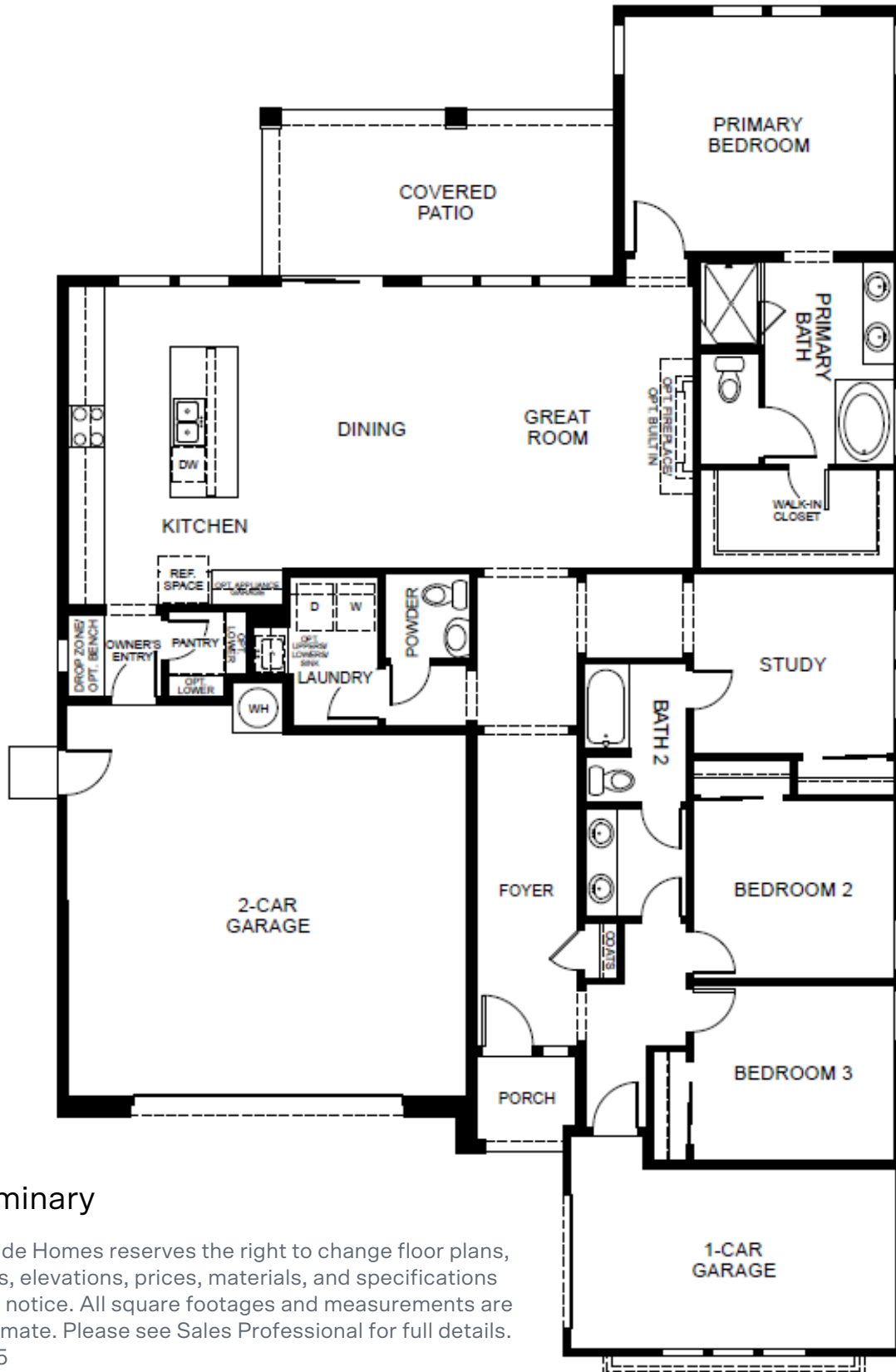
Woodside Homes reserves the right to change floor plans, features, elevations, prices, materials, and specifications without notice. All square footages and measurements are approximate. Please see Sales Professional for full details. 01/2025



Vista - Plan 1

Cascade Landing at Silverwood

2,220 Sq Ft | 3 - 4 Bed | 2.5 - 4.5 Bath | 2 - 3 Car Garage | Single Story Home Plus Suite & Casita Options



Preliminary

Woodside Homes reserves the right to change floor plans, features, elevations, prices, materials, and specifications without notice. All square footages and measurements are approximate. Please see Sales Professional for full details.

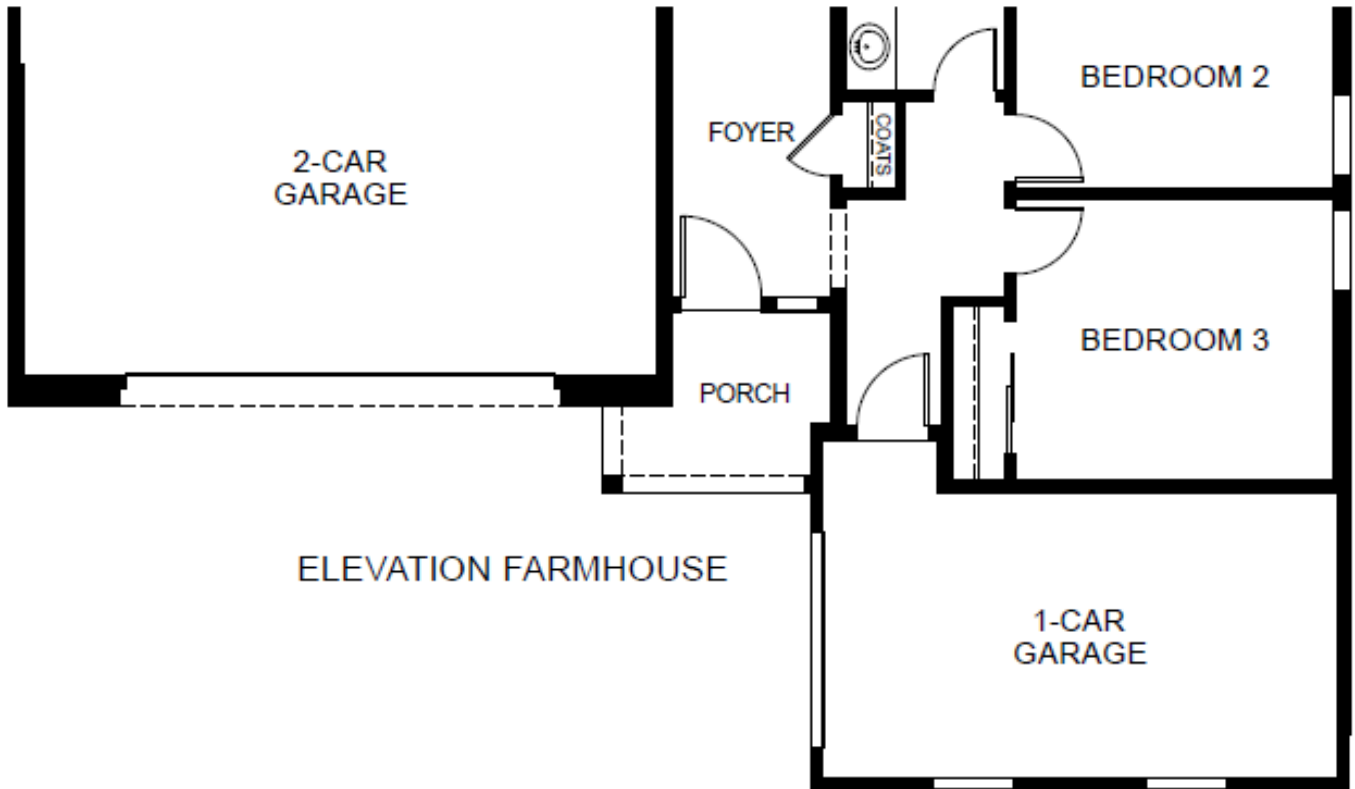
01/2025



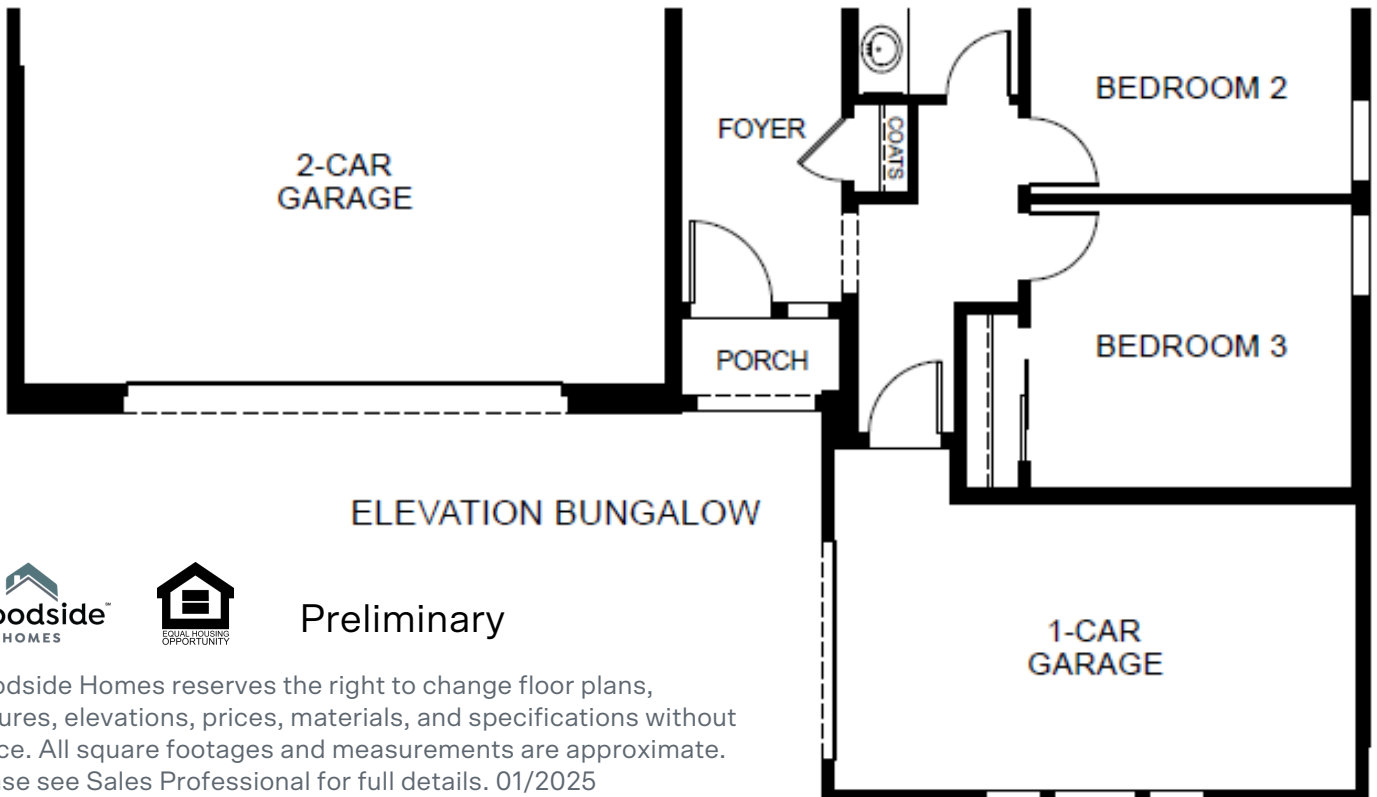
Vista - Plan 1

Cascade Landing at Silverwood

2,220 Sq Ft | 3 - 4 Bed | 2.5 - 4.5 Bath | 2 - 3 Car Garage | Single Story Home Plus Suite & Casita Options



ELEVATION FARMHOUSE



ELEVATION BUNGALOW



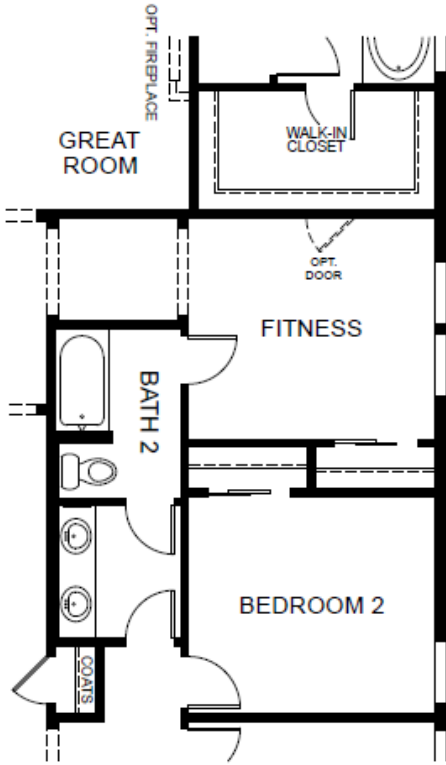
Preliminary

Woodside Homes reserves the right to change floor plans, features, elevations, prices, materials, and specifications without notice. All square footages and measurements are approximate. Please see Sales Professional for full details. 01/2025

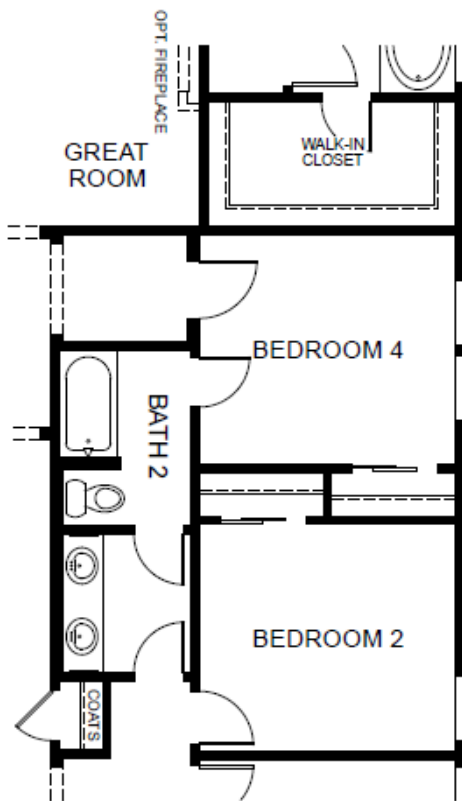
Vista - Plan 1

Cascade Landing at Silverwood

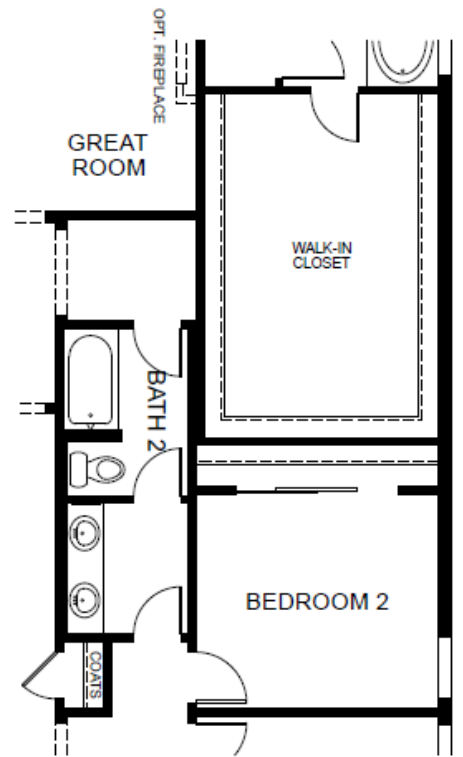
2,220 Sq Ft | 3 - 4 Bed | 2.5 - 4.5 Bath | 2 - 3 Car Garage | Single Story
Home Plus Suite & Casita Options



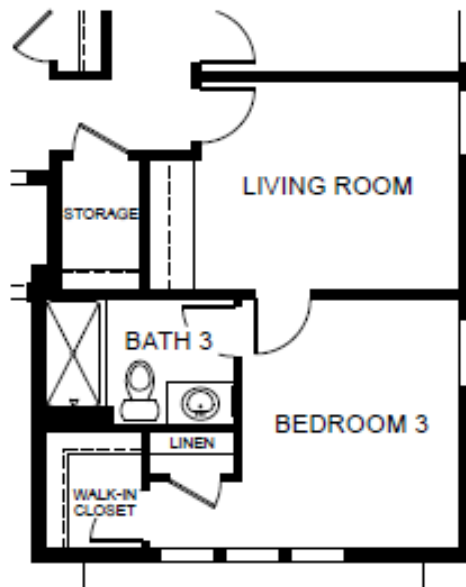
OPTIONAL
FITNESS ILO STUDY



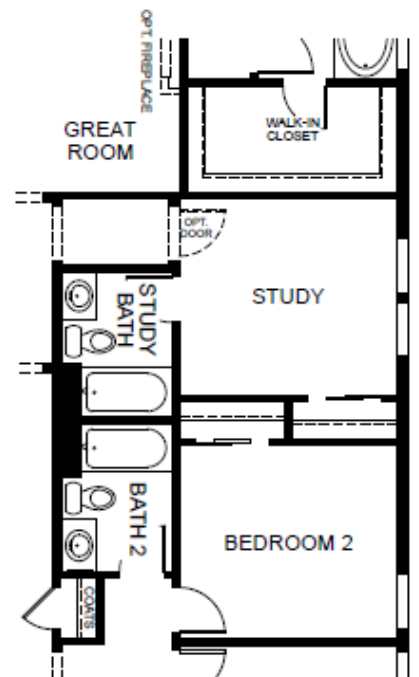
OPTIONAL
BEDROOM 4 ILO STUDY



OPTIONAL
SUPER CLOSET ILO STUDY



OPTIONAL
HOME PLUS



OPTIONAL
STUDY BATH

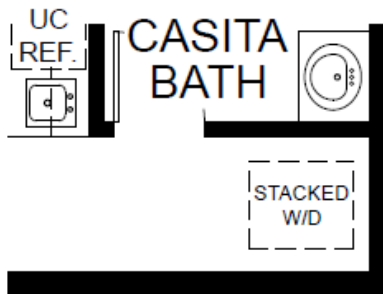
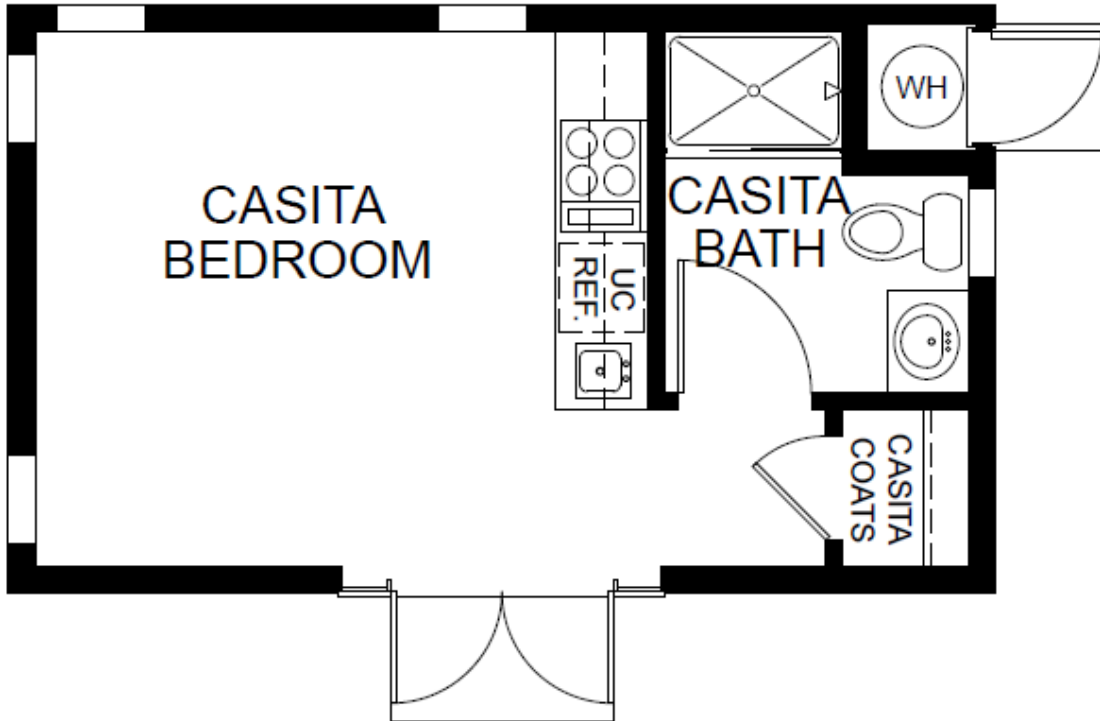
Preliminary



Woodside Homes reserves the right to change floor plans, features, elevations, prices, materials, and specifications without notice. All square footages and measurements are approximate. Please see Sales Professional for full details. 01/2025

Casita

Cascade Landing at Silverwood



OPTIONAL WASHER/DRYER
ILO CLOSET

Casita is 286 Sq Ft and is available on select homesites



Woodside Homes reserves the right to change floor plans, features, elevations, prices, materials, and specifications without notice. All square footages and measurements are approximate. Please see Sales Professional for full details. 01/2025



Site Map

Cascade Landing at Silverwood



Woodside Homes reserves the right to change floor plans, features, elevations, prices, materials, and specifications without notice. All square footages and measurements are approximate. Please see Sales Professional for full details. 01/2025



Kitchen

- Beautiful maple cabinetry with 36" upper cabinets with finished white interiors and euro hinges
- Large granite eat-in kitchen island and granite countertops with 6" backsplash and full-height backsplash behind range
- Gourmet GE® stainless steel appliances including:
 - GE® 30" free standing gas range
 - GE® Dishwasher with front controls
 - GE® 1.9 Cu. Ft. Over-the-Range Sensor Microwave Oven
- DELTA® single handle pull down kitchen faucet with Touch2O Technology
- Stainless steel deep double bowl undermount sink with disposal

Bed & Bath


- Luxurious e-stone vanity tops with 4" backsplash and undermount rectangular GERBER® vanity sinks
- DELTA® two handle center set bathroom faucet in chrome
- Decorative frameless polished edge vanity mirrors and mirrored medicine cabinets
- Primary bath includes a separate water closet with an exhaust fan
- Primary bedroom includes a spacious walk-in closet

Exterior Highlights

- Unique architectural designs feature Spanish, Bungalow, Farmhouse and Monterey
- Architecturally coordinated concrete tile roof and exterior color schemes
- Low maintenance stucco siding
- Insulated steel sectional roll-up garage doors with battery backup automatic openers and transmitters
- Elegant 8' Therma-Tru Smooth-Star® insulated fiberglass entry doors with security viewer, Kwikset® entry set in Venetian Bronze

Design & Technology

- Impressive ceramic tile floor at entry way, kitchen, bathrooms, pantry, and laundry room
- Shaw® carpet in bedrooms, closets, stairs, hall, loft and great room (per plan)
- Spacious light filled interiors with an open floor plan and a kitchen that opens into the dining and great room
- Elegant 2-panel interior doors
- Stylish 90-degree drywall corners throughout with light orange peel walls and light knock down finish at ceilings.
- Convenient interior side-by-side or stacked laundry with electric dryer hook-up
- Structured wiring CAT6
- Ring Doorbell installed after move in
- Decora rocker light switches
- LED lighting in entry, kitchen, great room, dining, pantry, stairs, bathrooms, and closets
- Ceiling fans prewired in great room, primary bedroom, secondary bedrooms, loft and covered patios (per plan)
- Smoke and CO detectors for your family's safety
- Fully drywalled, textured and painted garage interiors
- Convenient USB charging stations at kitchen, drop zone, and primary bedroom
- 1 Quad Shield RG-6 TV cable at great room, primary bedroom (per plan)
- Phones prewire with CAT 6 wiring in primary bedroom and kitchen
- Fire sprinklers for your peace of mind
- 200-amp electrical service panel
- Ten-year construction defect warranty

Woodside Homes reserves the right to change floor plans, features, elevations, prices, materials, and specifications without notice. All square footages and measurements are approximate. Please see Sales Professional for full details. 01/25 

Green Living

- Innovative solar program
- Electric Water Heater w/Heat Pump
- Water saving toilets, shower heads and plumbing fixtures
- Full exterior door weather stripping
- Low VOC PPG paints and durable low VOC wall to wall carpet
- R30 Open Cell Spray Foam to roof deck
- R-21 rated wall insulation
- Insulated hot water lines throughout
- Carrier® air conditioning units with digital programming Honeywell WiFi thermostat

Healthy Home

- HVAC systems with MERV 13 filtration, designed to capture airborne particles less than a micron in size including bacteria, pet dander, and smoke
- The Delta Touch 2.0® Faucet with VoicelQ™, which allows you to turn your kitchen faucet on and off with just a tap
- Exterior and interior building standards designed to keep the insides of your walls dry to help prevent mold, including water-resistant house wrap, flashing, and sealants to keep moisture out
- Durable PEX tubing for plumbing and Dens Shield® Tile Backer in bathrooms to create a moisture barrier between your shower and interior walls
- Carpet, vinyl, engineered wood, laminate flooring, cabinets, and adhesives certified as low-VOC



woodsidehomes.com

Woodside Homes reserves the right to change floor plans, features, elevations, prices, materials, and specifications without notice. All square footages and measurements are approximate. Please see Sales Professional for full details. 01/25 🏠