

Single Story • 1,485 Sq. Ft. • 3 Bedrooms • 2 Baths • 2-Bay Garage



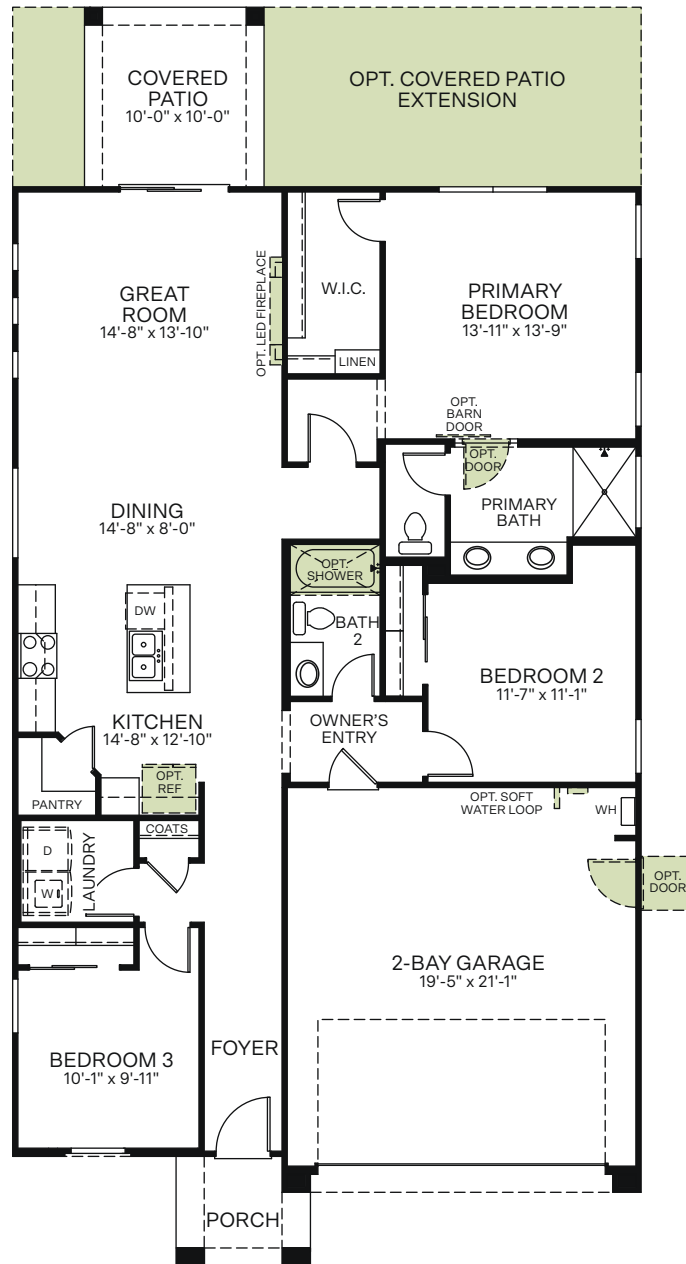
Spanish (A)



Craftsman (B)

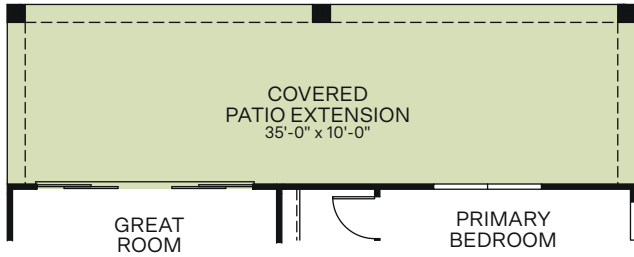


Western Prairie (C)

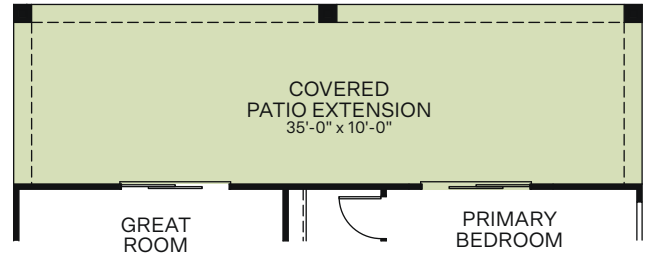


Woodside Homes reserves the right to change floor plans, features, elevations, prices, materials and specifications without notice. All square footages and measurements are approximate. Please see Sales Professional for full details.  
02/2022

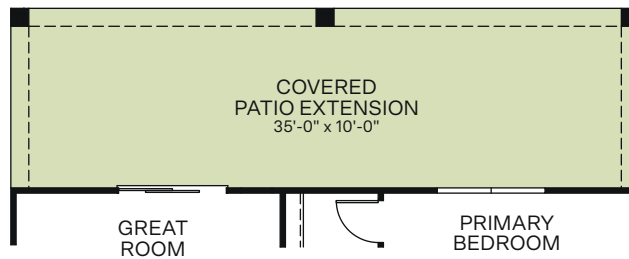
## OPTIONS



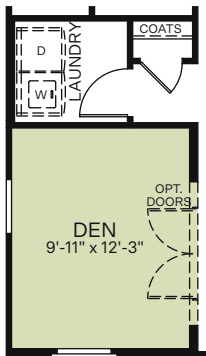
OPTIONAL 12 FT. CENTER SLIDING GLASS DOOR  
AT GREAT ROOM  
(ONLY AVAILABLE WITH COVERED PATIO EXTENSION)



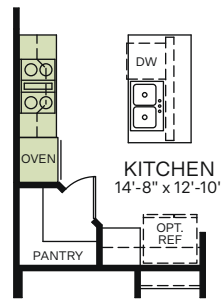
OPTIONAL 6 FT. SLIDING GLASS DOOR  
AT PRIMARY BEDROOM  
(ONLY AVAILABLE WITH COVERED PATIO EXTENSION)



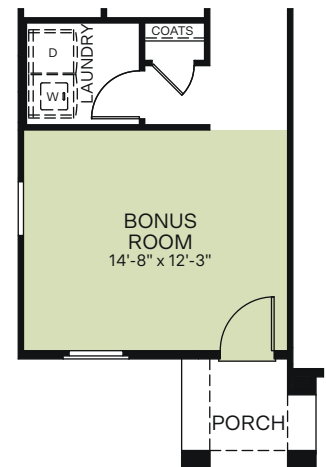
OPTIONAL COVERED PATIO EXTENSION



OPTIONAL DEN  
ILO BEDROOM 3



OPTIONAL KITCHEN  
APPLIANCE LAYOUT



OPTIONAL BONUS ROOM  
ILO BEDROOM 3