

Hampton Estate

Two-story • 2,451 Finished Sq. Ft. • 3,557 Total Sq. Ft. • 3-7 Bedrooms • 2.5-3.5 Baths • Volume Great Room • Living Room • Dining Room • Loft • Opt Bonus Room • Opt Extended Great Room • Opt Bedroom 4 & 5 With Full Bath • 2 Car Tandem



Traditional (A)



Farmhouse (B)



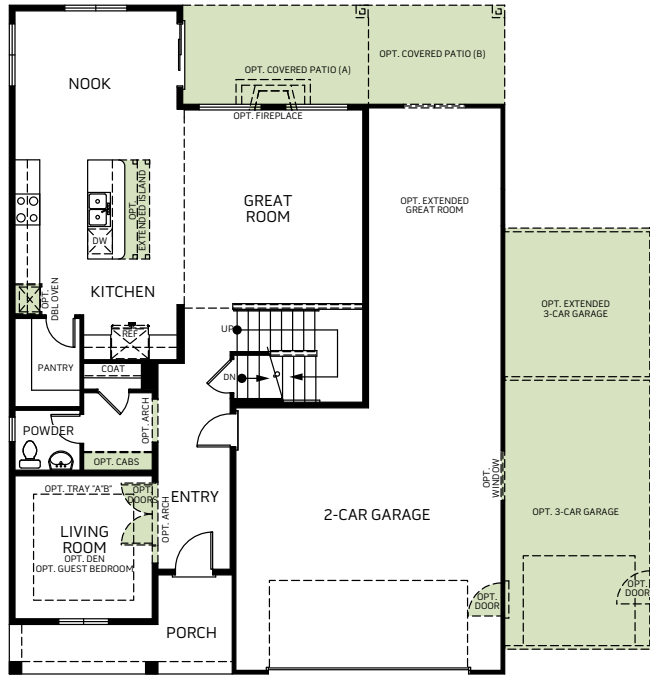
Prairie (D)

Woodside Homes reserves the right to change elevations, specifications, materials and prices without notice. All square footages are approximate. Window location, porches, ceiling heights and room dimensions vary per elevation. The availability of certain options is subject to construction status and schedule. Optional features may be predetermined and included at additional cost on select homes. Renderings are artist's conception only.
Rev. 03/21

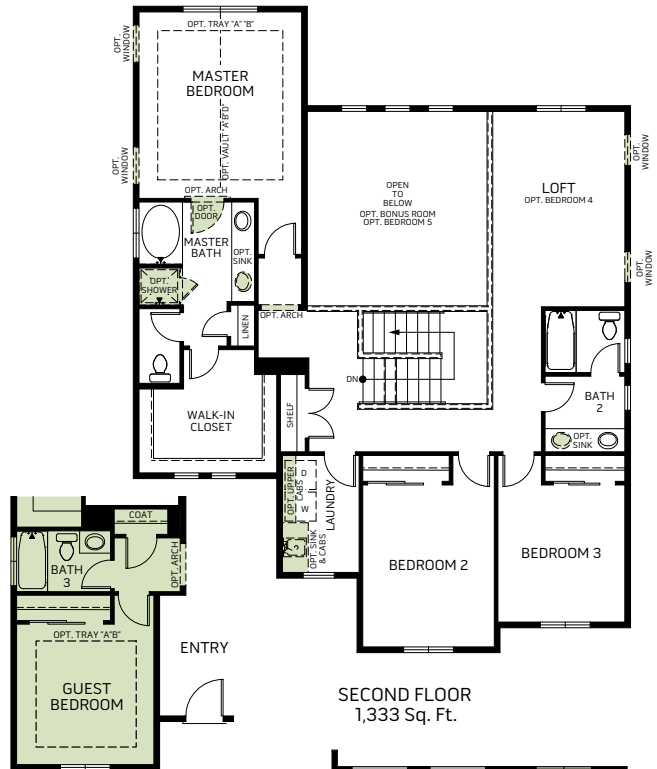


Hampton Estate

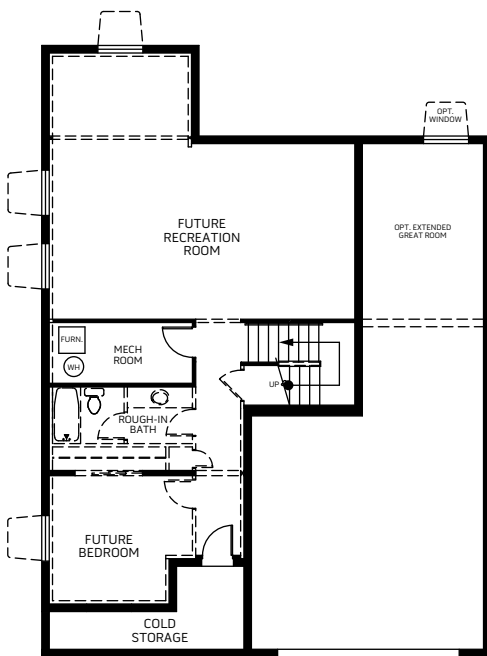
Two-story • 2,451 Finished Sq. Ft. • 3,557 Total Sq. Ft. • 3-7 Bedrooms • 2.5-3.5 Baths • Volume Great Room • Living Room • Dining Room • Loft • Opt Bonus Room • Opt Extended Great Room • Opt Bedroom 4 & 5 With Full Bath • 2 Car Tandem



FIRST FLOOR
1,118 Sq. Ft.

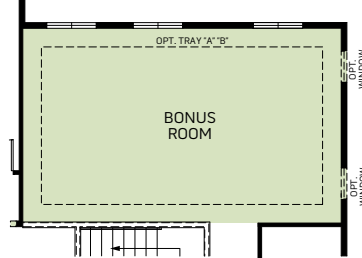


SECOND FLOOR
1,333 Sq. Ft.

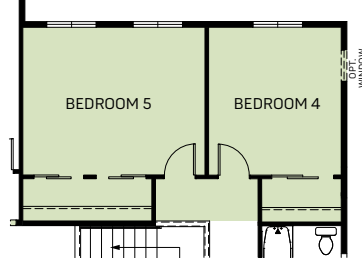


BASEMENT PLAN
1106 Sq. Ft.

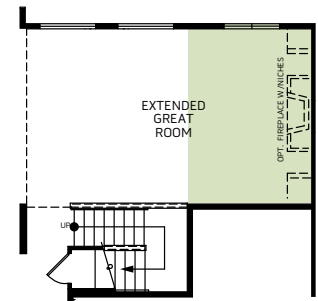
OPT. GUEST BEDROOM
& FULL BATH



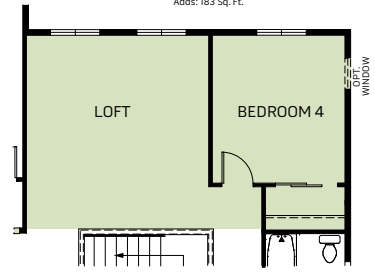
OPT. BONUS ROOM
Adds: 238 Sq. Ft.



OPT. BEDROOM 4 &
BEDROOM 5
Adds: 238 Sq. Ft.



OPT. EXTENDED GREAT ROOM
Adds: 183 Sq. Ft.



OPT. BEDROOM 4 &
LOFT
Adds: 238 Sq. Ft.

Woodside Homes reserves the right to change elevations, specifications, materials and prices without notice. All square footages are approximate. Window location, porches, ceiling heights and room dimensions vary per elevation. The availability of certain options is subject to construction status and schedule. Optional features may be predetermined and included at additional cost on select homes. Renderings are artist's conception only.
Rev. 03/21