

## Sagecrest

One-story • 1,993 Finished Sq. Ft. • 3,947 Total Sq. Ft. • 3-6 Bedrooms • 2.5-3.5 Baths • Open Great Room  
Opt. Den • Opt. Extended Pantry • Opt. Covered Patio • 2-3 Car Garage



Traditional (A)



Farmhouse (B)



Prairie (D)

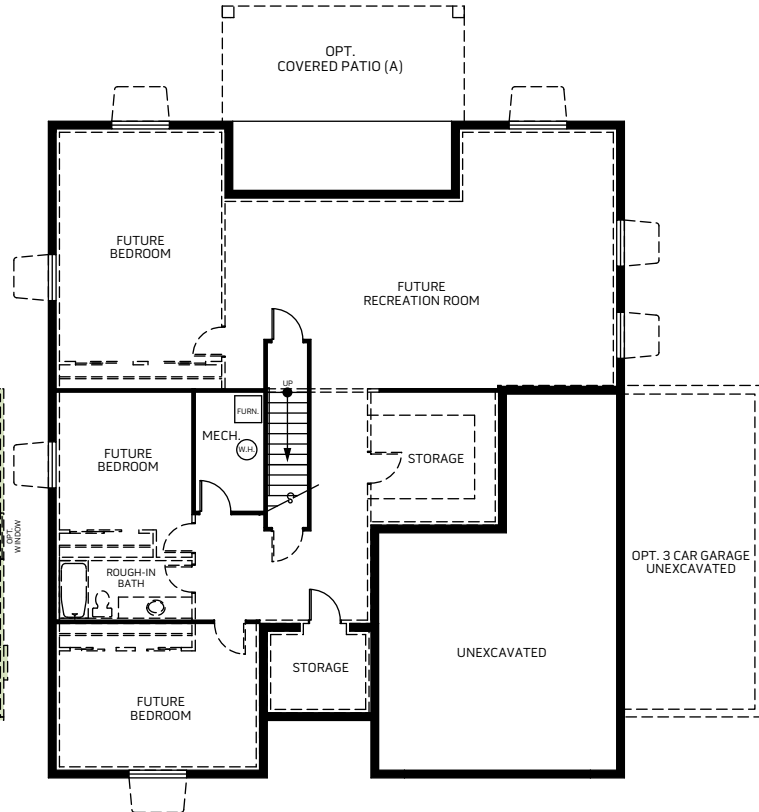
Woodside Homes reserves the right to change elevations, specifications, materials and prices without notice. All square footages are approximate. Window location, porches, ceiling heights and room dimensions vary per elevation. The availability of certain options is subject to construction status and schedule. Optional features may be predetermined and included at additional cost on select homes. Renderings are artist's conception only.  
Rev. 03/21

**Sagecrest**

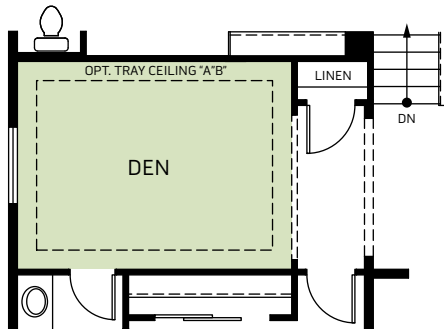
One-story • 1,993 Finished Sq. Ft. • 3,947 Total Sq. Ft. • 3-6 Bedrooms • 2.5-3.5 Baths • Open Great Room  
Opt. Den • Opt. Extended Pantry • Opt. Covered Patio • 2-3 Car Garage



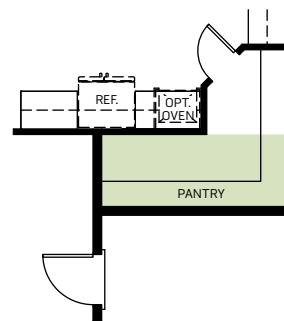
FLOOR PLAN  
1,993 Sq. Ft.



BASEMENT PLAN  
1,954 Sq. Ft.



OPT. DEN



OPT. EXTENDED PANTRY  
Adds: 42 Sq. Ft.

Woodside Homes reserves the right to change elevations, specifications, materials and prices without notice. All square footages are approximate. Window location, porches, ceiling heights and room dimensions vary per elevation. The availability of certain options is subject to construction status and schedule. Optional features may be predetermined and included at additional cost on select homes. Renderings are artist's conception only.  
Rev. 03/21

