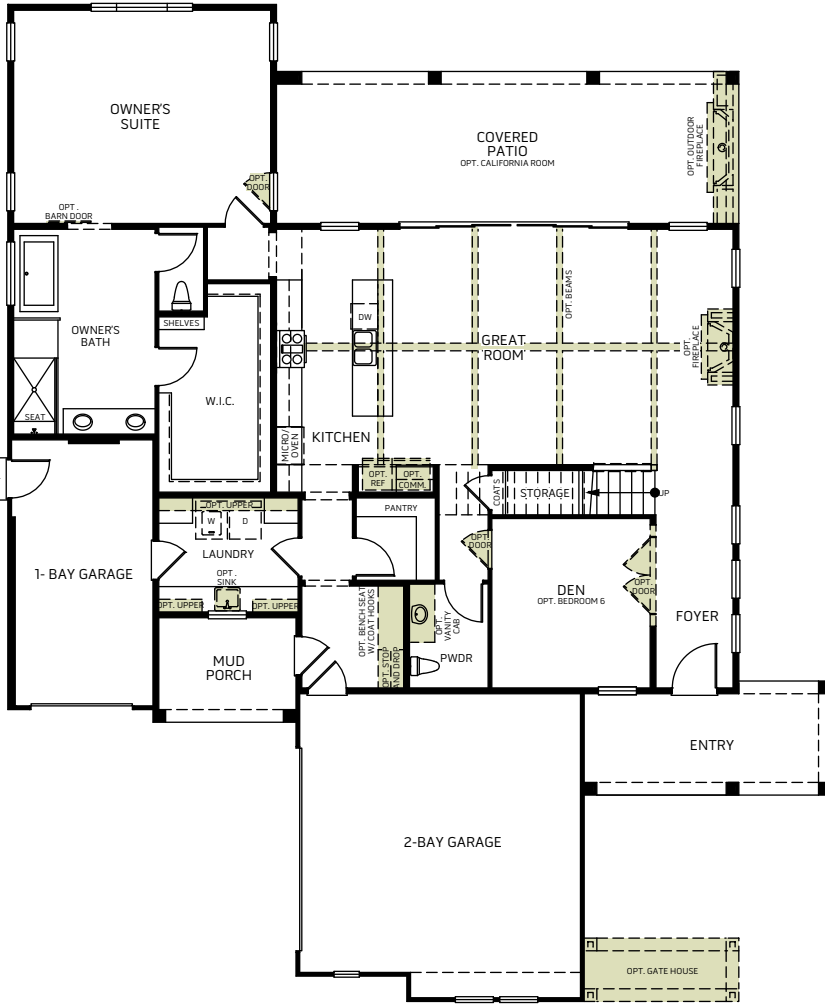
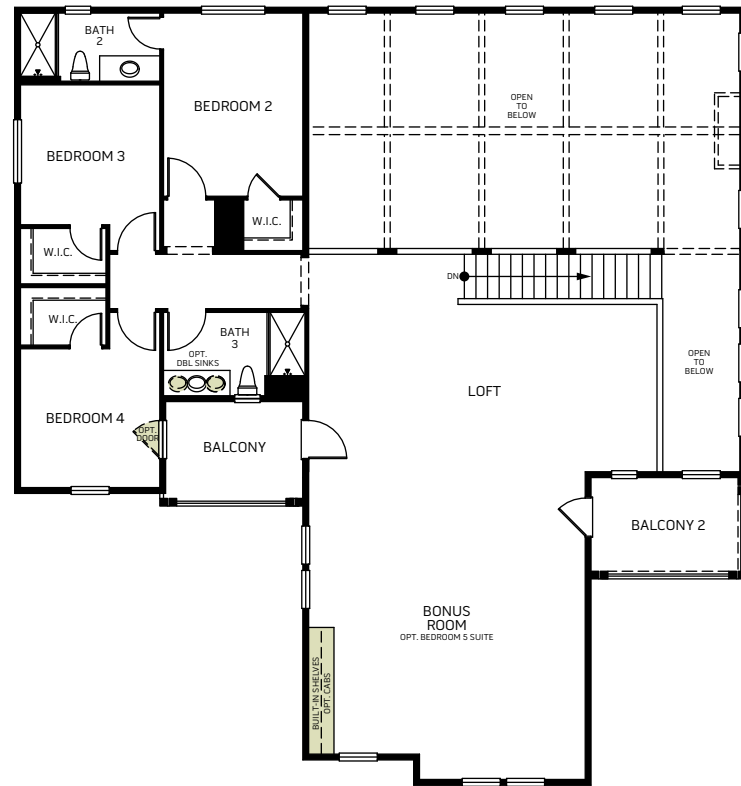


THE SUN PORCH W/ BONUS - 6531

Two Story • 4,002 Sq. Ft • 4-6 Bedrooms • 3.5-5 Baths
Great Room • Kitchen with Island • Den • Loft • 3-Bay Garage



FIRST FLOOR



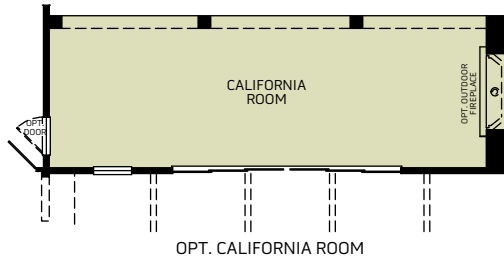
SECOND FLOOR

Woodside Homes reserves the right to change elevations, specifications, materials and prices without notice. All square footages are approximate. Window location, porches, ceiling heights and room dimensions vary per elevation. The availability of certain options is subject to construction status and schedule. Optional features may be predetermined and included at additional cost on select homes. Renderings are artist's conception only.

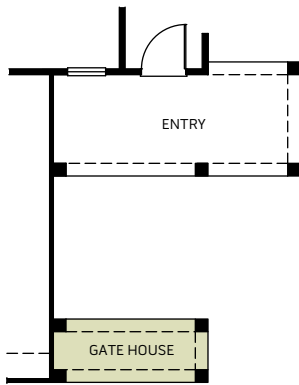


THE SUN PORCH W/ BONUS - 6531

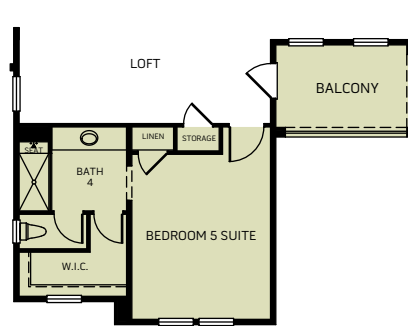
OPTIONS



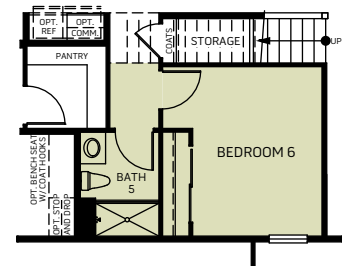
OPT. CALIFORNIA ROOM



OPT. GATE HOUSE



OPT. BEDROOM 5 SUITE AT BONUS ROOM



OPT. BEDROOM 6 BATH 5 AT DEN

Woodside Homes reserves the right to change elevations, specifications, materials and prices without notice. All square footages are approximate. Window location, porches, ceiling heights and room dimensions vary per elevation. The availability of certain options is subject to construction status and schedule. Optional features may be predetermined and included at additional cost on select homes. Renderings are artist's conception only.

