

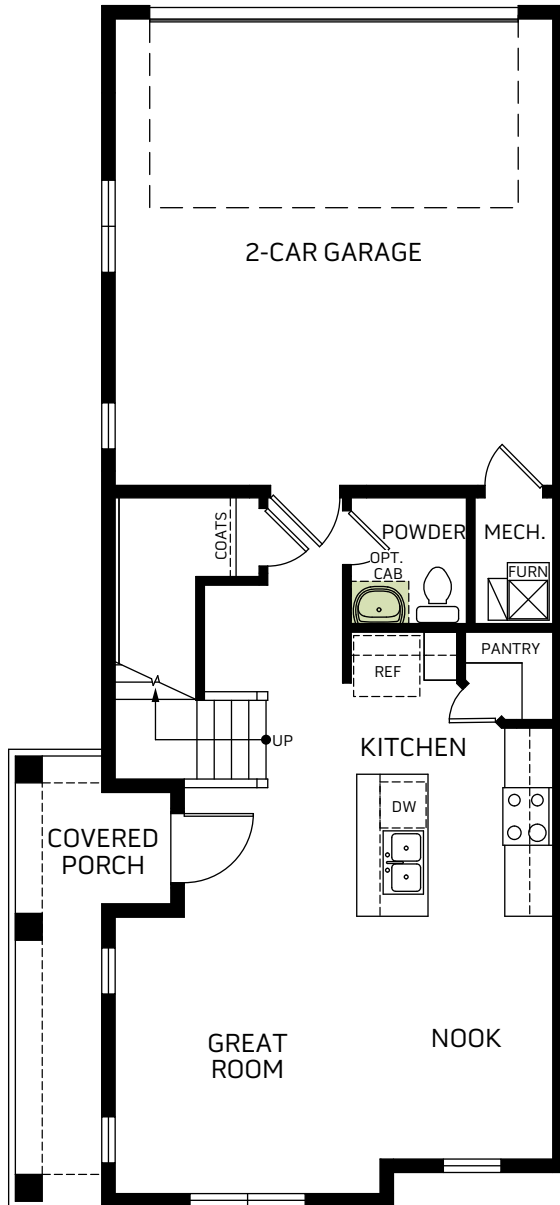


**Woodside Homes®**  
BETTER BY DESIGN

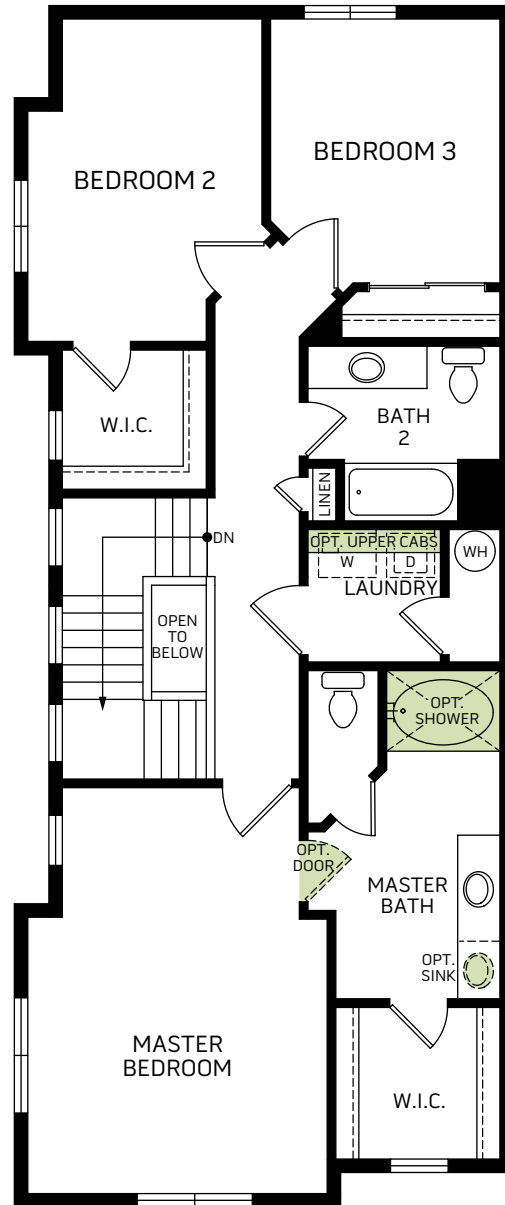
*Legacy*  
at Salt Point

## Jefferson

Two-story • 1,579 Finished Sq. Ft • 3 Bedrooms • 2.5 Baths • Great Room •  
Walk-In Closet • 2 Car Garage



FIRST FLOOR  
597 Sq. Ft.



SECOND FLOOR  
982 Sq. Ft.



Woodside Homes reserves the right to change elevations, specifications, materials and prices without notice. All square footages are approximate. Window location, porches, ceiling heights and room dimensions vary per elevation. The availability of certain options is subject to construction status and schedule. Optional features may be predetermined and included at additional cost on select homes. Renderings are artist's conception only. Rev. 02/20



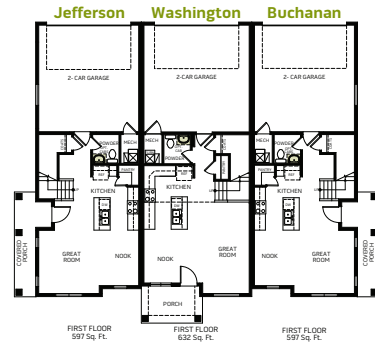
WoodsideHomes.com  
3793 South 3250 West, West Haven, UT 84401



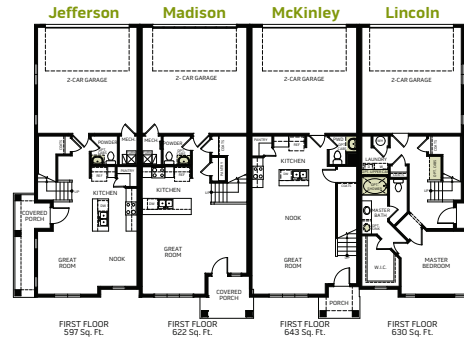
## 3 PLEX, 4 PLEX A, 4 PLEX B & 5 PLEX



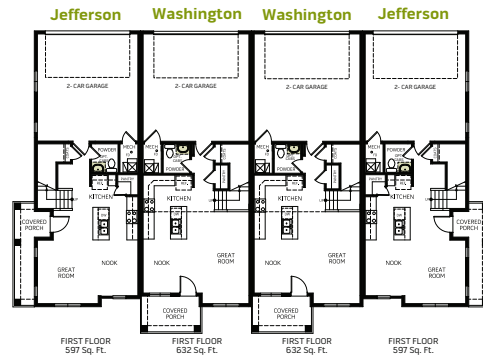
**3 PLEX**



**4 PLEX A**



**4 PLEX B**



**5 PLEX**

