

BIANCA - 3740



A - Stucco Bungalow



B - Farmhouse

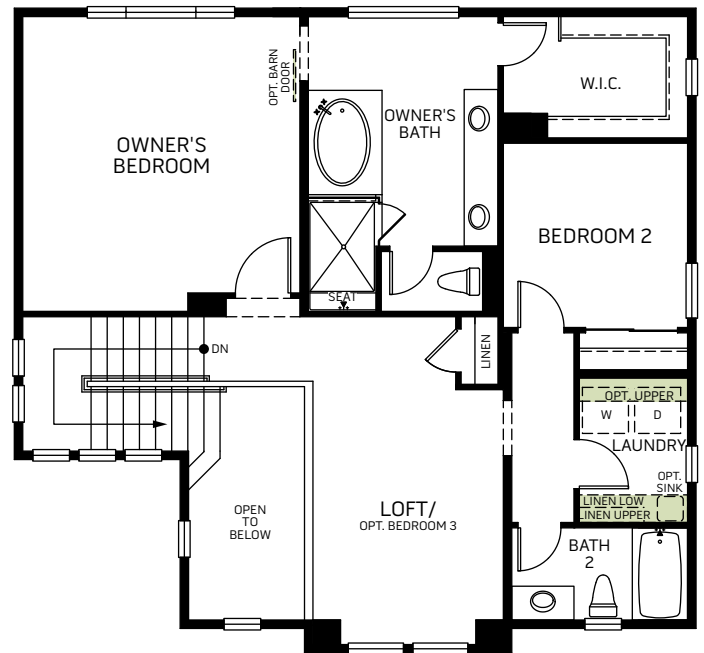
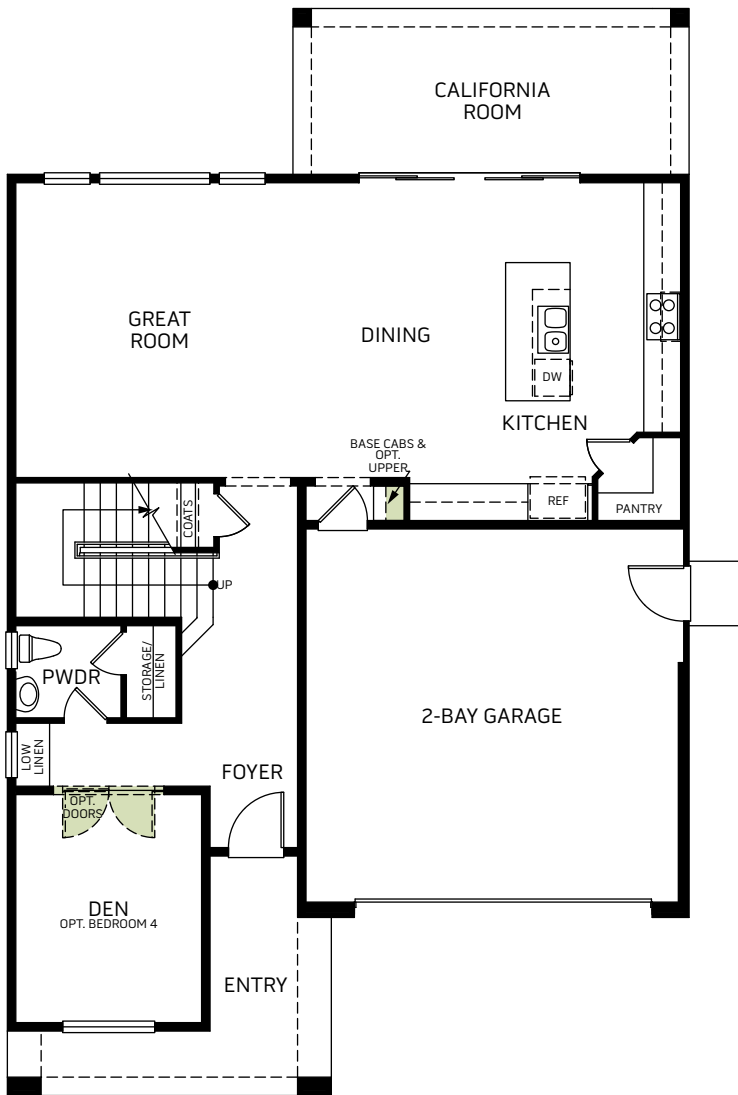


C - Craftsman



D - Modern Prairie

Two-Story • 2,119 Sq. Ft. • 2-4 Bedrooms • 2.5-3 Baths • Great Room • Kitchen with Island • Walk-in Pantry • Laundry • Den • 2-Bay Garage



Woodside Homes reserves the right to change elevations, specifications, materials and prices without notice. All square footages are approximate. Window location, porches, ceiling heights and room dimensions vary per elevation. The availability of certain options is subject to construction status and schedule. Optional features may be predetermined and included at additional cost on select homes. Renderings are artist's conception only.



BIANCA - 3740

OPTIONS



A - Stucco Bungalow



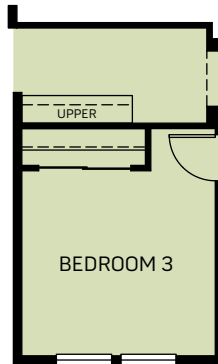
B - Farmhouse



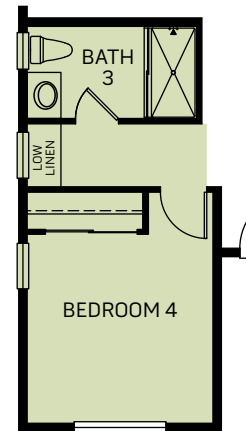
C - Craftsman



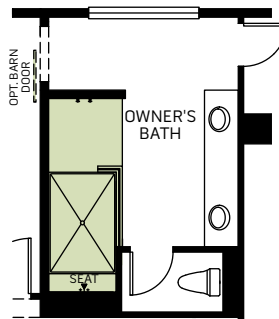
D - Modern Prairie



OPT. BEDROOM 3 AT LOFT



OPT. BEDROOM 4 /BATHROOM 3



OPT. WALK-IN SHOWER AT OWNER'S BATH



Woodside Homes reserves the right to change elevations, specifications, materials and prices without notice. All square footages are approximate. Window location, porches, ceiling heights and room dimensions vary per elevation. The availability of certain options is subject to construction status and schedule. Optional features may be predetermined and included at additional cost on select homes. Renderings are artist's conception only.



WoodsideHomes.com

MyNewHome-CentralValley@WoodsideHomes.com