



Woodside Homes®
BETTER BY DESIGN

Still Water
Solitude

Maple

Two-story • 1,446 Sq. Ft. • 3 Bedrooms • 2.5 Baths • Side Entry Home
Open Great Room Living • Opt. Covered Patio • 2 Car Garage



Traditional (A)



Farmhouse (B)



Craftsman (C)



Prairie (D)

Woodside Homes reserves the right to change elevations, specifications, materials and prices without notice. All square footages are approximate. Window location, porches, ceiling heights and room dimensions vary per elevation. The availability of certain options is subject to construction status and schedule. Optional features may be predetermined and included at additional cost on select homes. Renderings are artist's conception only.
Rev. 03/21



WoodsideHomes.com
1784 W. Parkview Dr. Syracuse, UT 84075

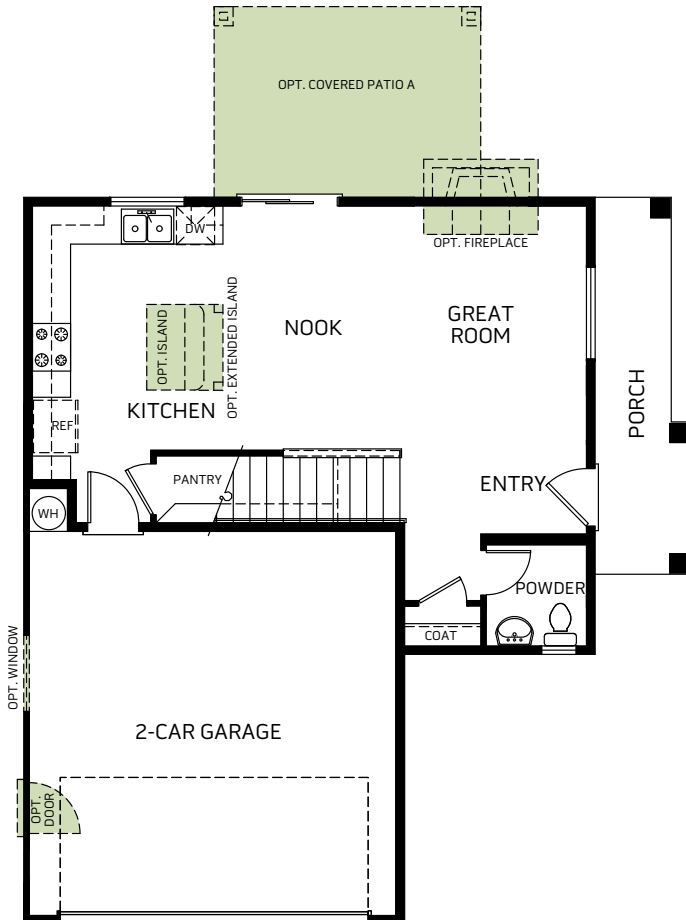


Woodside Homes®
BETTER BY DESIGN

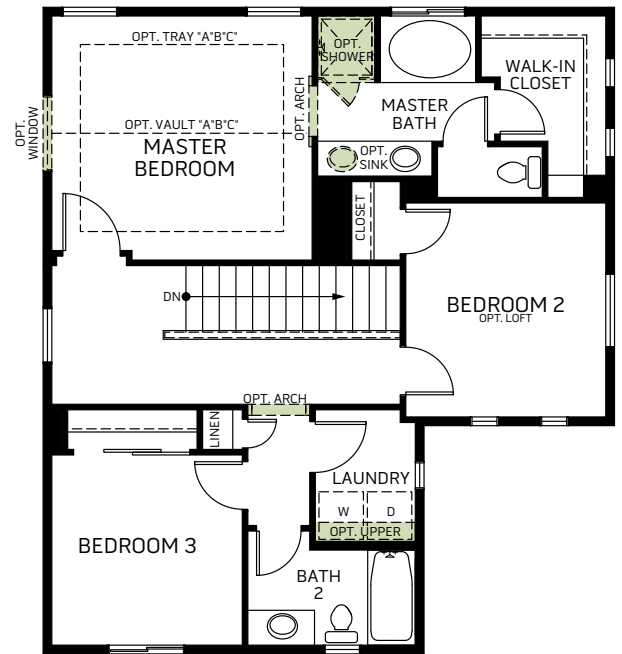
Still Water
Solitude

Maple

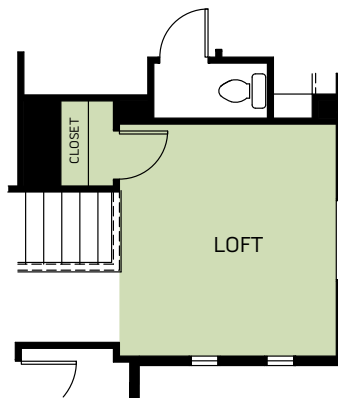
Two-story • 1,446 Sq. Ft. • 3 Bedrooms • 2.5 Baths • Side Entry Home
Open Great Room Living • Opt. Covered Patio • 2 Car Garage



FIRST FLOOR PLAN
588 Sq. Ft.



SECOND FLOOR PLAN
858 Sq. Ft.



OPT. LOFT

Woodside Homes reserves the right to change elevations, specifications, materials and prices without notice. All square footages are approximate. Window location, porches, ceiling heights and room dimensions vary per elevation. The availability of certain options is subject to construction status and schedule. Optional features may be predetermined and included at additional cost on select homes. Renderings are artist's conception only.

Rev. 03/21



WoodsideHomes.com
1784 W. Parkview Dr. Syracuse, UT 84075