



**Woodside Homes®**  
BETTER BY DESIGN

*Still Water*  
Preserve

## Amesbury

Two-story • 1,742 Finished Sq. Ft. • 3-4 Bedrooms • 2.5 Baths • Open Great Room Living  
Opt. Upstairs Bonus Room • Opt. Loft & Opt. 4th bedroom • 2-3 Car Garage



**Traditional (A)**



**Farmhouse (B)**



**Craftsman (C)**



**Prairie (D)**



Woodside Homes reserves the right to change elevations, specifications, materials and prices without notice. All square footages are approximate. Window location, porches, ceiling heights and room dimensions vary per elevation. The availability of certain options is subject to construction status and schedule. Optional features may be predetermined and included at additional cost on select homes. Renderings are artist's conception only.  
Rev. 08/19



WoodsideHomes.com  
1323 W. Silverhollow Dr. Syracuse, UT 84075

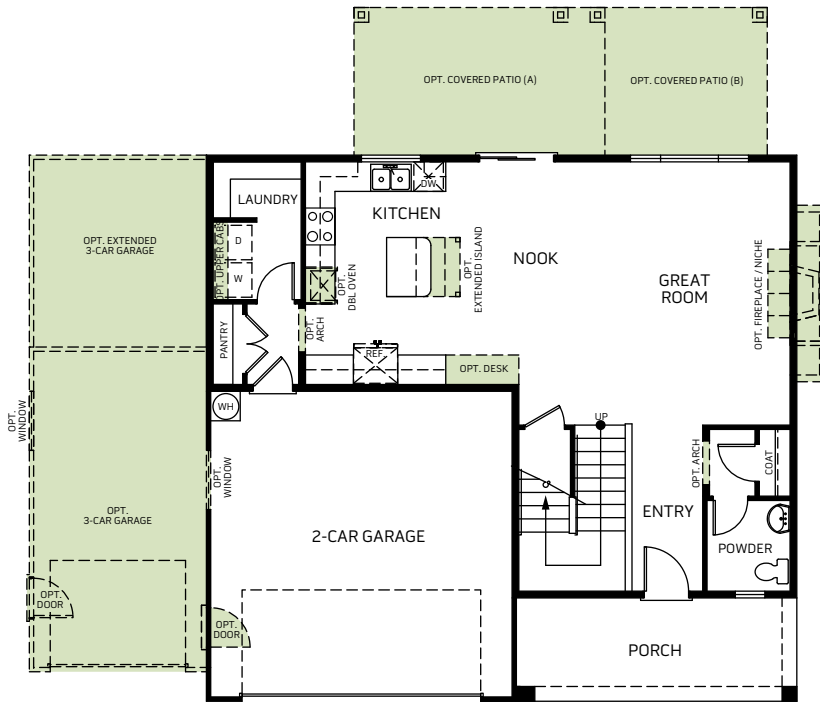


**Woodside Homes®**  
BETTER BY DESIGN

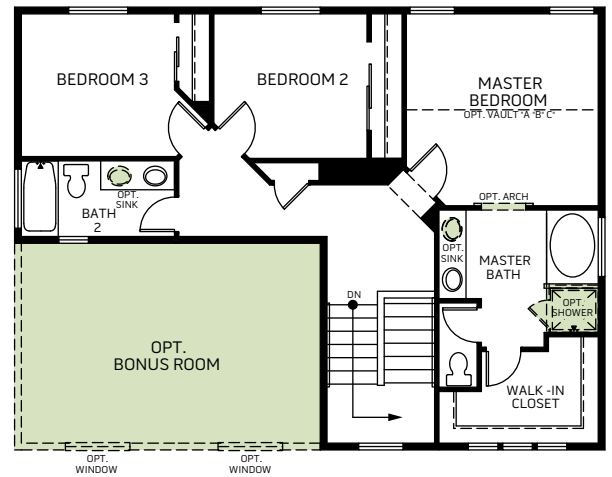
*Still Water*  
Preserve

## Amesbury

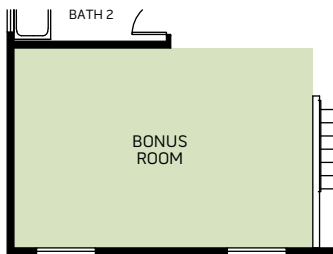
Two-story • 1,742 Finished Sq. Ft. • 3-4 Bedrooms • 2.5 Baths • Open Great Room Living  
Opt. Upstairs Bonus Room • Opt. Loft & Opt. 4th bedroom • 2-3 Car Garage



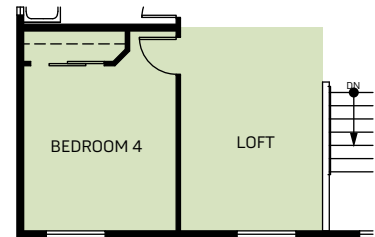
FLOOR PLAN  
910 Sq. Ft.



SECOND FLOOR  
832 Sq. Ft.



OPT. BONUS ROOM  
Adds: 295 Sq. Ft.



OPT. BEDROOM 4/LOFT  
Adds: 295 Sq. Ft.



Woodside Homes reserves the right to change elevations, specifications, materials and prices without notice. All square footages are approximate. Window location, porches, ceiling heights and room dimensions vary per elevation. The availability of certain options is subject to construction status and schedule. Optional features may be predetermined and included at additional cost on select homes. Renderings are artist's conception only.  
Rev. 08/19



WoodsideHomes.com  
1323 W. Silverhollow Dr. Syracuse, UT 84075