

# Piermont at Cadence

SOHO PLAN 2



Spanish Colonial

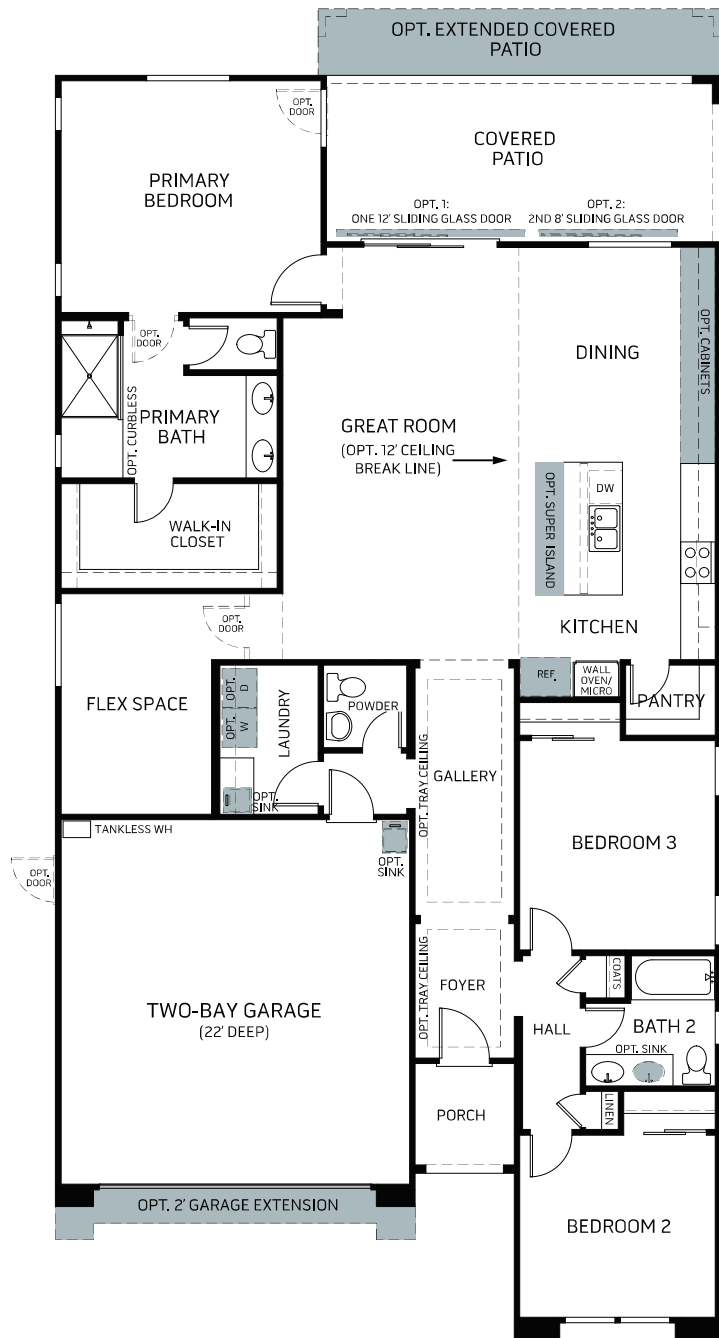


Monterey

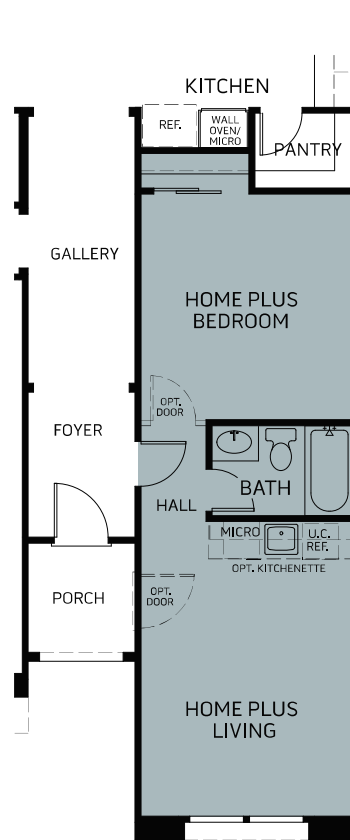


Tuscan

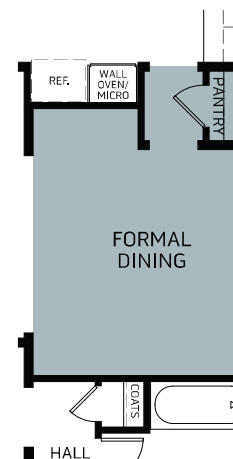
SINGLE STORY | 2,020 SQ. FT.



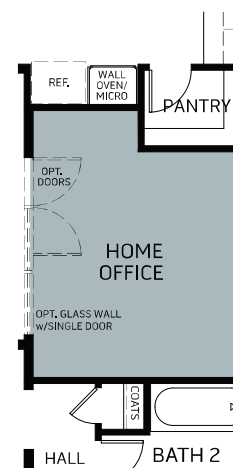
SOHO PLAN 2 OPTIONAL FEATURES



OPT. HOME PLUS ILO BEDROOM 2 and 3

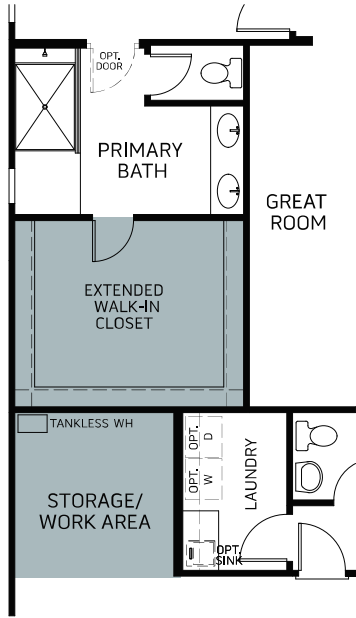


OPT. FORMAL DINING ILO BEDROOM 3

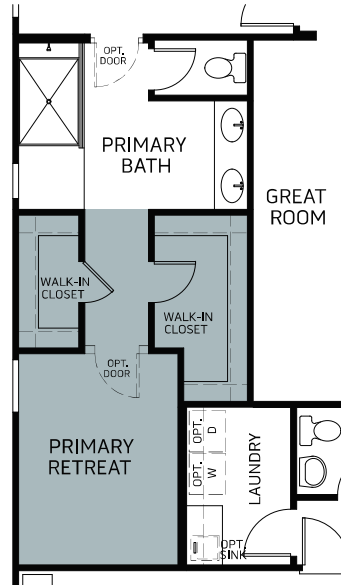


OPT. HOME OFFICE ILO BEDROOM 3

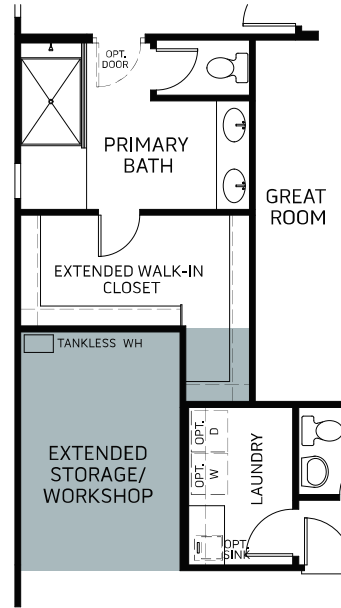
## SOHO PLAN 2 OPTIONAL FEATURES



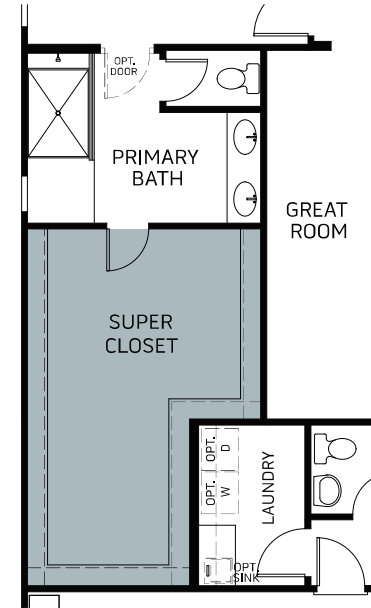
OPT. EXTENDED CLOSET  
w/STORAGE/WORK AREA  
ILO FLEX



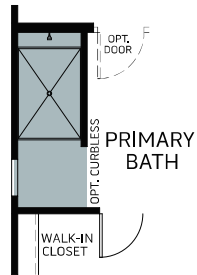
OPT. PRIMARY RETREAT  
ILO FLEX



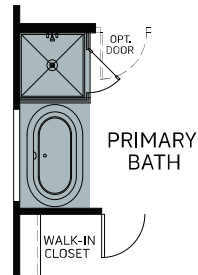
OPT. EXTENDED STORAGE/  
WORKSHOP ILO FLEX



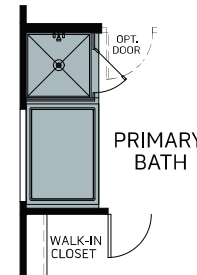
OPT. SUPER CLOSET  
ILO FLEX



OPT. FULL WALL  
AT SHOWER



OPT. FREE  
STANDING TUB



OPT.  
DROP-IN TUB



Woodside Homes reserves the right to change floor plans, features, elevations, prices, materials and specifications without notice. All square footages and measurements are approximate. Please see Sales Professional for full details.  
DEC2022

