

Royal / 6035

Single-Story • 3,559 Sq. Ft. • 4 Bedrooms • 4.5 Baths • Great Room • Kitchen with Island • Walk-in Pantry • Laundry • Owner's Entry • Covered Patio • 3-Bay Garage



Spanish (A)



Ranch (B)



Tuscan (C)

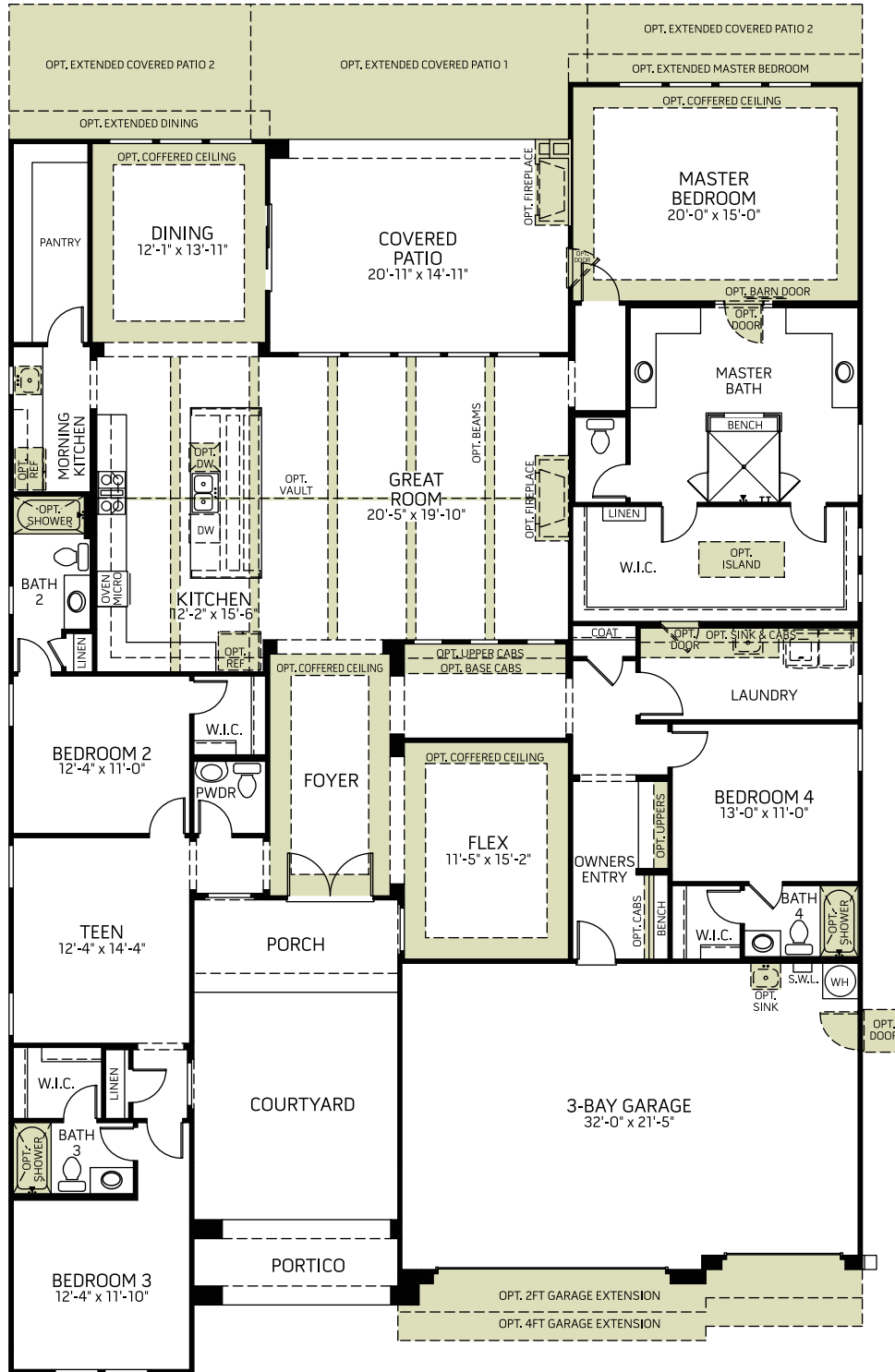
Woodside Homes reserves the right to change floor plans, maps, prices, and specifications without notice. Prices are subject to change without notice. The model information listed, including availability, floor plans, elevations, features, and other information are subject to change. Model home interior decorating, landscaping, fencing, and other amenities are for display purposes only. All renderings, floor plans, and maps are artist conceptions and are not intended to be an actual depiction of the buildings, fencing, driveways, or landscaping. Optional features may be included at additional cost and are subject to construction cut-off dates. All square foot measurements, elevations, features, and floor plans are approximate. This advertisement is for illustration purposes only and not part of a legal contract. Please see Sales Representative for full details, and additional information about options shown dashed on base floor plan. Woodside Homes Sales AZ, LLC. 03/2021



#EleganceAtEastmark

WoodsideHomes.com/Arizona

Royal / 6035



FLOOR PLAN

Woodside Homes reserves the right to change floor plans, maps, prices, and specifications without notice. Prices are subject to change without notice. The model information listed, including availability, floor plans, elevations, features, and other information are subject to change. Model home interior decorating, landscaping, fencing, and other amenities are for display purposes only. All renderings, floor plans, and maps are artist conceptions and are not intended to be an actual depiction of the buildings, driveways, or landscaping. Optional features may be included at additional cost and are subject to construction cut-off dates. All square foot measurements, elevations, features, and floor plans are approximate. This advertisement is for illustration purposes only and not part of a legal contract. Please see Sales Representative for full details, and additional information about options shown dashed on base floor plan. Woodside Homes Sales AZ, LLC. 03/2021

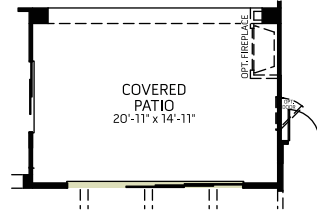


#EleganceAtEastmark

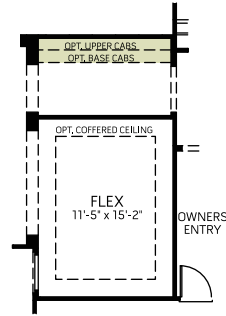
WoodsideHomes.com/Arizona

Royal / 6035

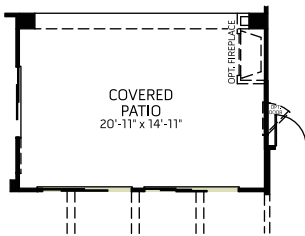
OPTIONS



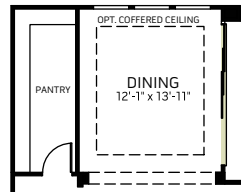
OPTIONAL 15 FT MULTI-SLIDE DOORS
AT GREAT ROOM



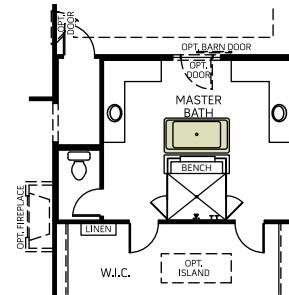
OPTIONAL SOLID WALL
AT GREAT ROOM



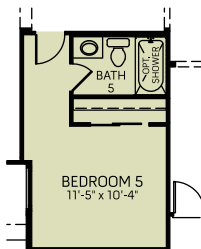
OPTIONAL TWO MULTI-SLIDE DOORS AT
GREAT ROOM TO COVERED PATIO



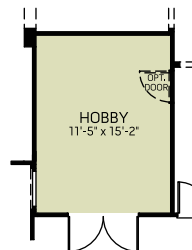
OPTIONAL 12 FT MULTI-SLIDE DOORS
AT DINING TO COVERED PATIO



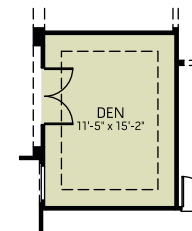
OPTIONAL FREE STANDING TUB



OPTIONAL BEDROOM 5
ILO FLEX
(not available with tandem garage option)
(not available with hobby room option)
(not available with den option)



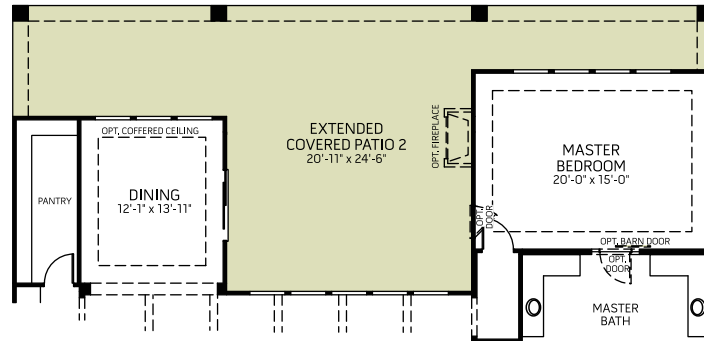
OPTIONAL HOBBY ROOM
ILO FLEX
(not available with bedroom 5 option)
(not available with tandem garage option)
(not available with den option)



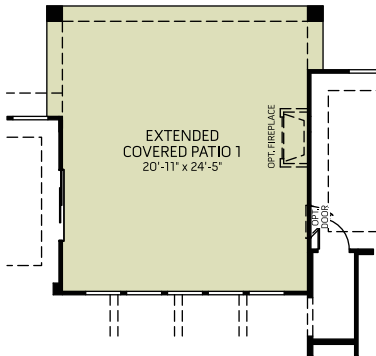
OPTIONAL DEN
ILO FLEX
(not available with bedroom 5 option)
(not available with hobby room option)
(not available with tandem garage option)

Royal / 6035

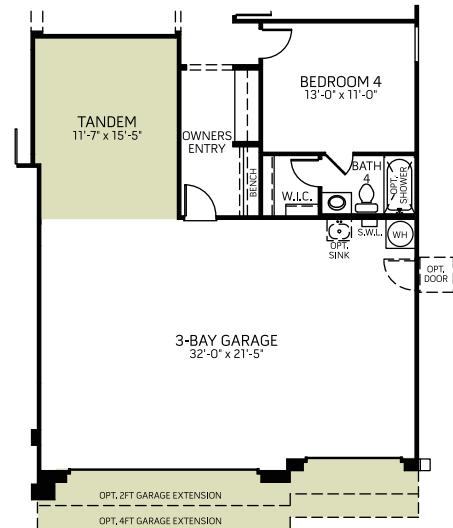
OPTIONS



OPTIONAL COVERED PATIO EXTENSION 2



OPTIONAL COVERED PATIO EXTENSION 1



OPTIONAL TANDEM GARAGE
(not available with bedroom 5 option)
(not available with hobby room option)
(not available with den option)