

WoodsideHomes.com

Let's get you home.

Bayview At Shoreline

CEDAR



Traditional (A)



Farmhouse (B)

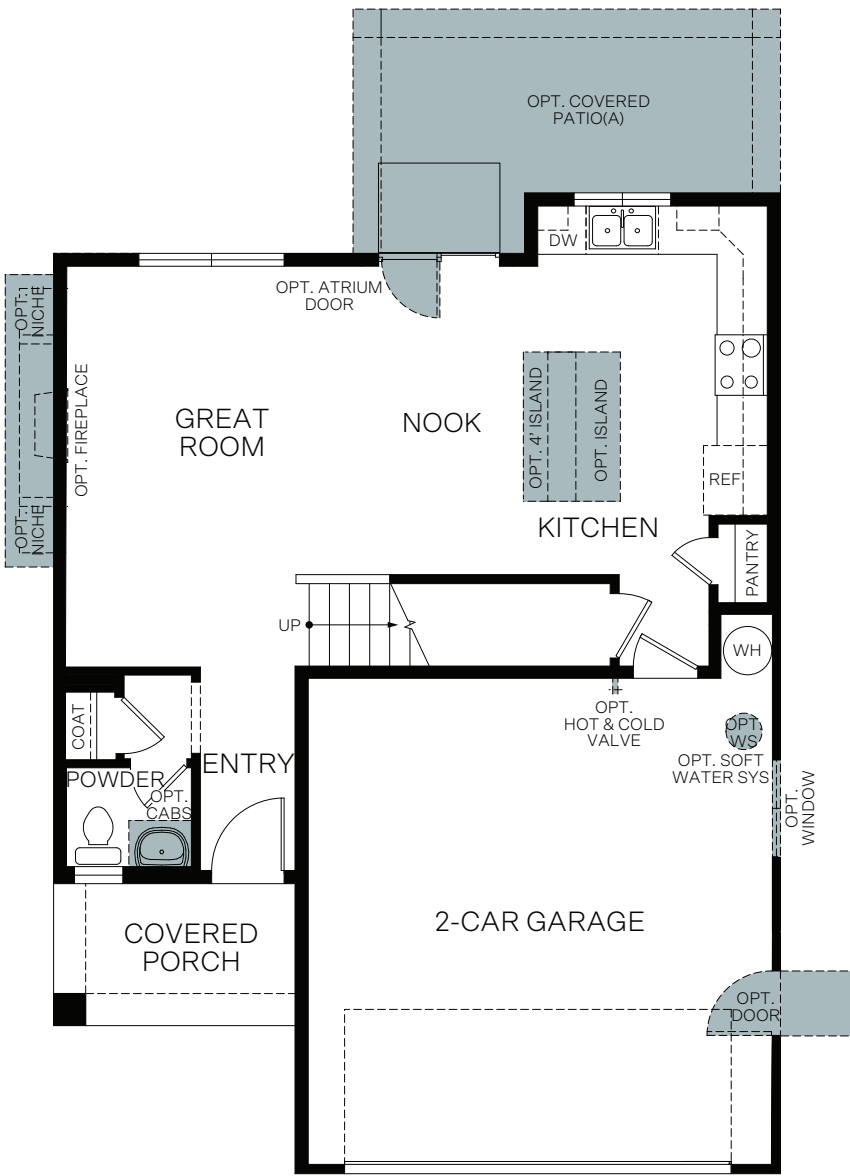


Craftsman (C)

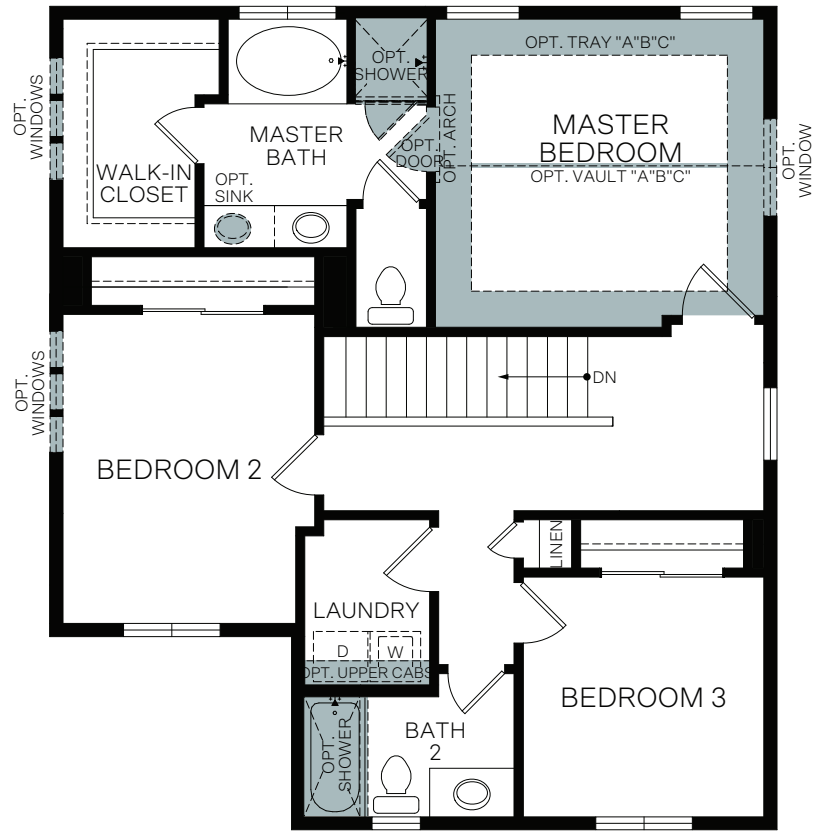


Prairie (D)

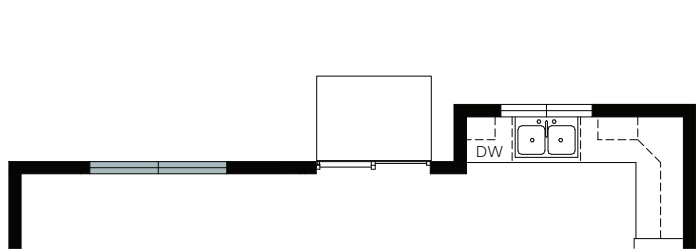
TWO-STORY 1,529 SQ. FT.



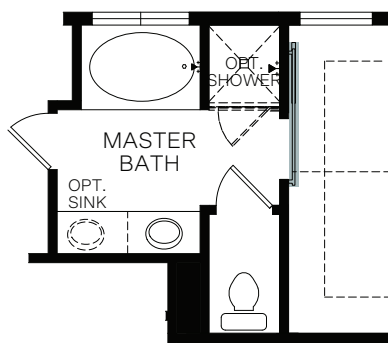
FIRST FLOOR
629 Sq. Ft.



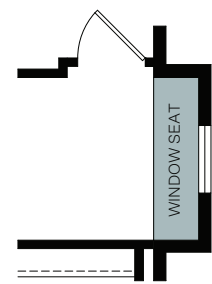
SECOND FLOOR
900 Sq. Ft.



OPT. TRANSOM WINDOW PACKAGE



OPT. BARN DOOR AT MASTER BATH



OPT. WINDOW SEAT
Adds: 16 Sq. Ft.



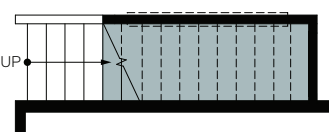
OPT. PET DEN



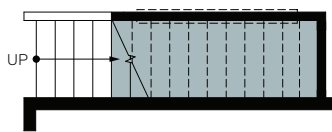
OPT. CHARGING STATION



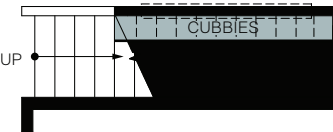
OPT. CHARGING STATION WITH SHELVES



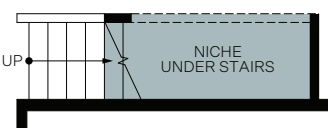
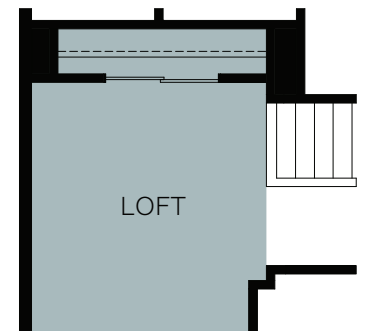
OPT. OFFICE SPACE AT STAIRS



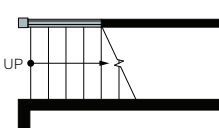
OPT. READING NOOK AT STAIRS



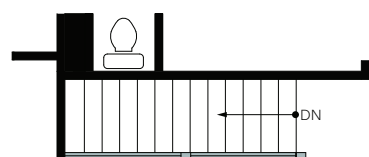
OPT. CUBBIES AT STAIRS



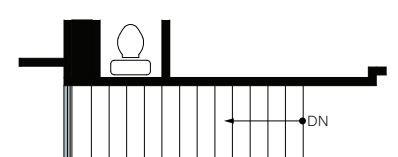
OPT. NICHE UNDER AT STAIRS



OPT. RAILING 1



OPT. RAILING 2



OPT. RAILING 3