

WoodsideHomes.com

Let's get you home.

Parkview At Shoreline

BRYCE



Traditional (A)

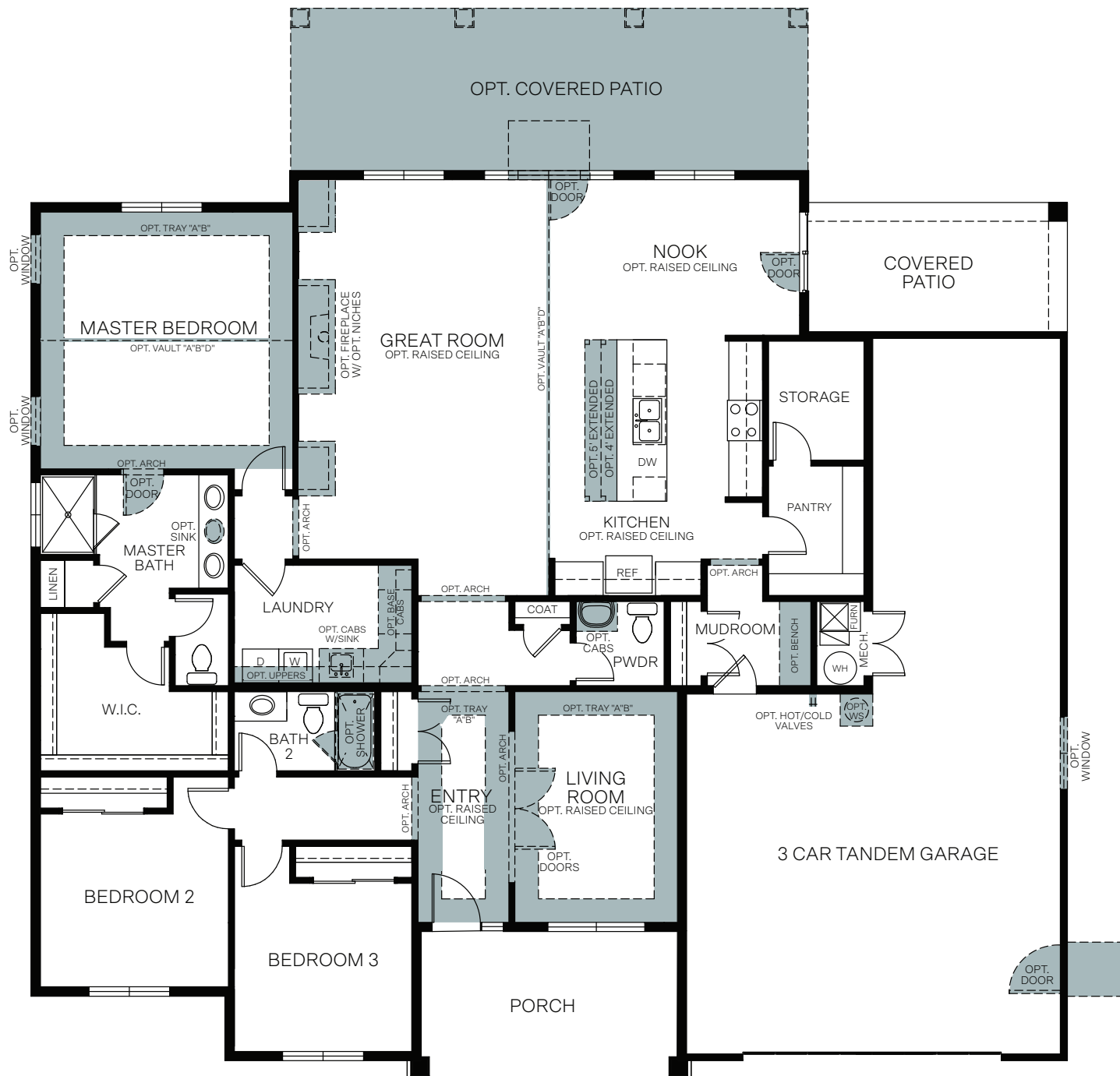


Farmhouse (B)

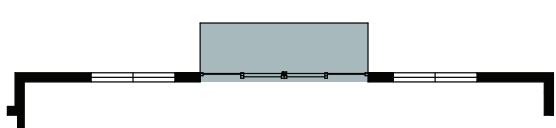


Prairie (D)

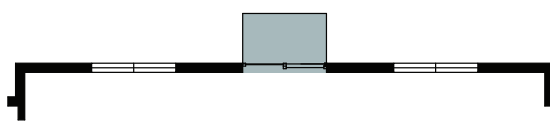
ONE-STORY 2,250 SQ. FT.



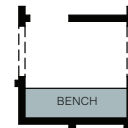
FLOOR PLAN
2,250 Sq.Ft.



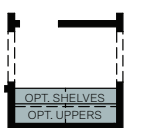
OPT. 10' SLIDER



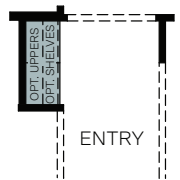
OPT. 5' SLIDER



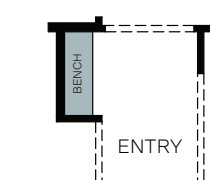
OPT. BUILT-IN BENCH



OPT. CHARGING STATION



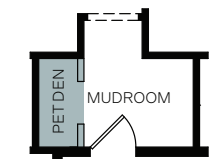
OPT. CHARGING STATION AT ENTRY



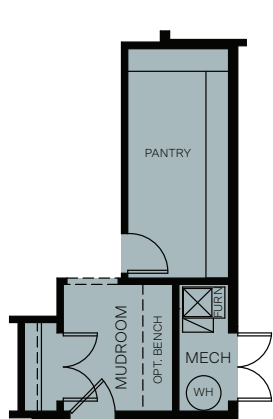
OPT. BUILT-IN BENCH AT ENTRY



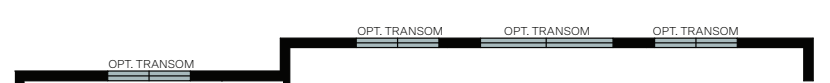
OPT. PET WASH



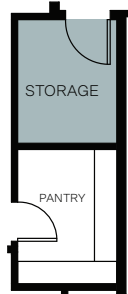
OPT. PET DEN



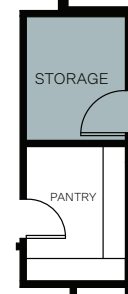
OPT. EXTENDED PANTRY AND MUDROOM



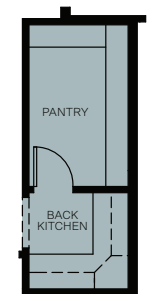
OPT. TRANSOM WINDOWS



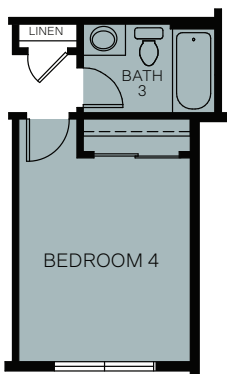
OPT. STORAGE AT COVERED PATIO



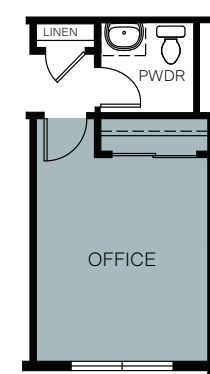
OPT. STORAGE AT GARAGE



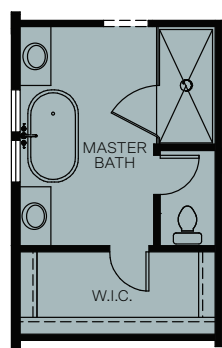
OPT. BACK KITCHEN



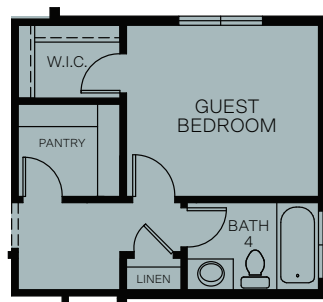
OPT. BEDROOM 4 W/BATH 3



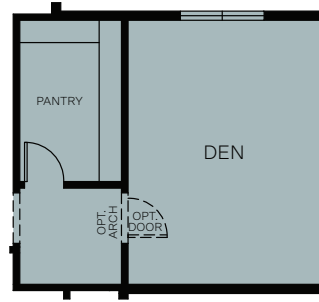
OPT. OFFICE



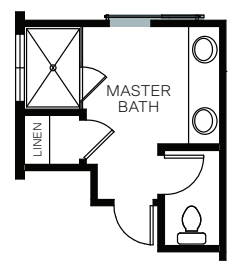
OPT. SPA BATH AT MASTER



OPT. GUEST BEDROOM W/BATH 4



OPT. DEN ADDS 150 Sq.Ft.



OPT. BARN DOOR AT MASTER BATH

