

Black Rock

At Verrado

VISTA | PLAN 4527



Spanish Elevation (A)

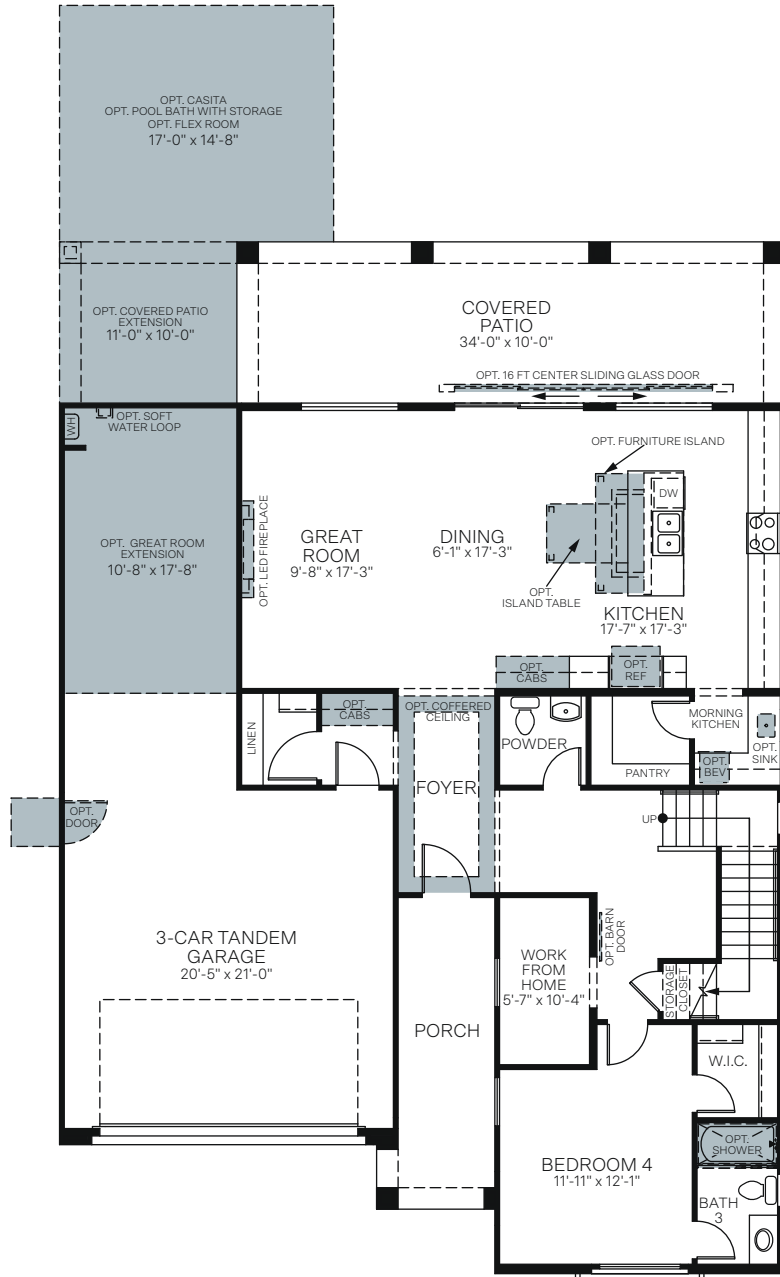


Western Prairie Elevation (B)

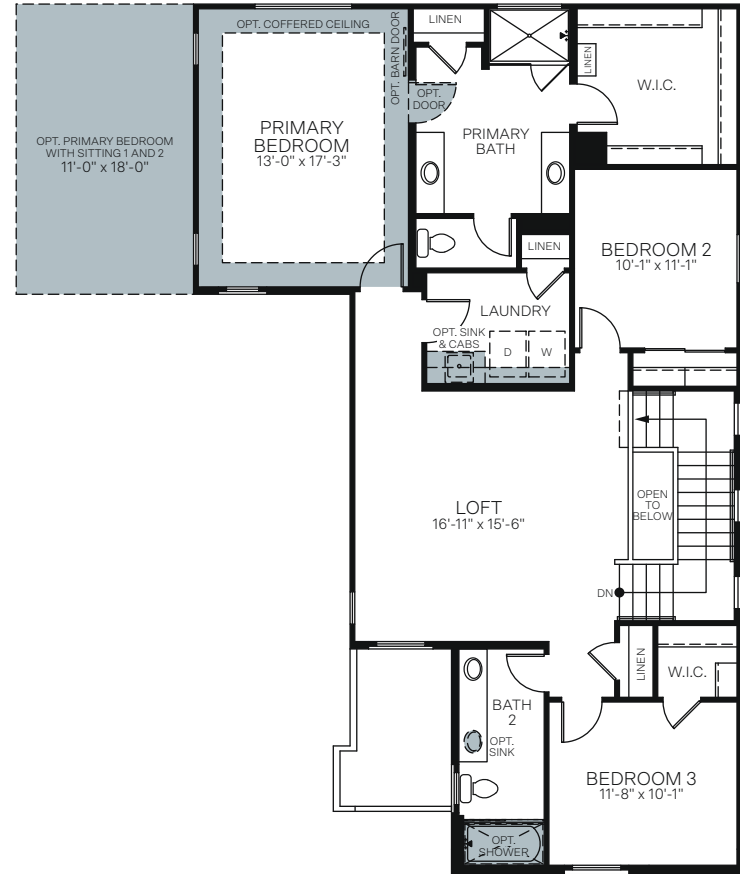


Craftsman Elevation (C)

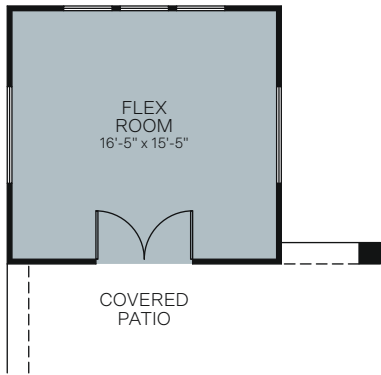
TWO-STORY • 2,697 SQ. FT.



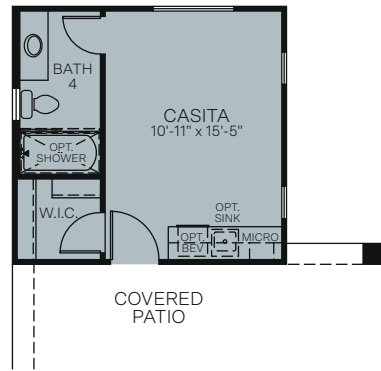
FIRST FLOOR



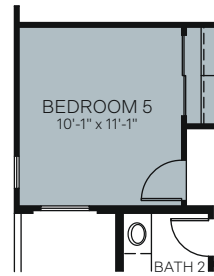
SECOND FLOOR



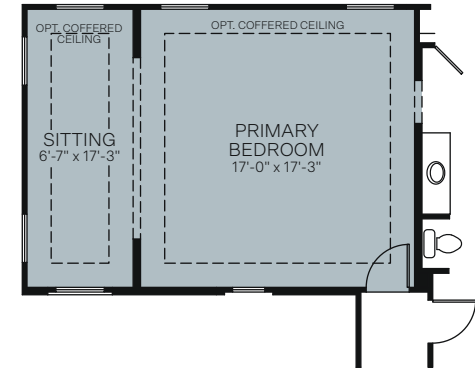
OPTIONAL FLEX ROOM
(INCLUDES COVERED PATIO EXTENSION)



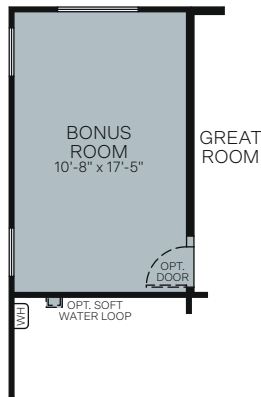
OPTIONAL CASITA
(INCLUDES COVERED PATIO EXTENSION)



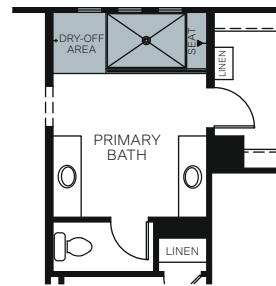
OPTIONAL BEDROOM 5 ILO LOFT



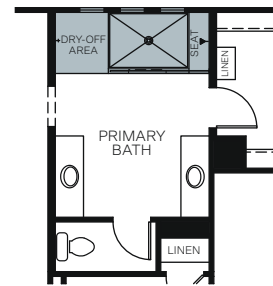
OPTIONAL PRIMARY BEDROOM WITH SITTING 2



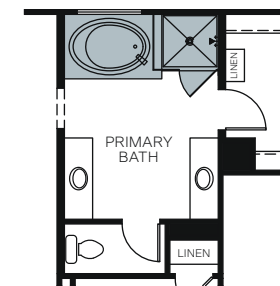
OPTIONAL BONUS ROOM



OPTIONAL EXTENDED SHOWER
WITH FULL GLASS AT
PRIMARY BATHROOM



OPTIONAL EXTENDED SHOWER
WITH HALF WALL AT
PRIMARY BATHROOM



OPTIONAL SEPARATE TUB/SHOWER
AT PRIMARY BATHROOM



Woodside Homes reserves the right to change floor plans, features, elevations, prices, materials and specifications without notice. All square footages and measurements are approximate. Please see Sales Professional for full details. 10/2022

