

Single Story • 1,661 Sq. Ft. • 3 Bedrooms • 2 Baths • 2-Bay Garage



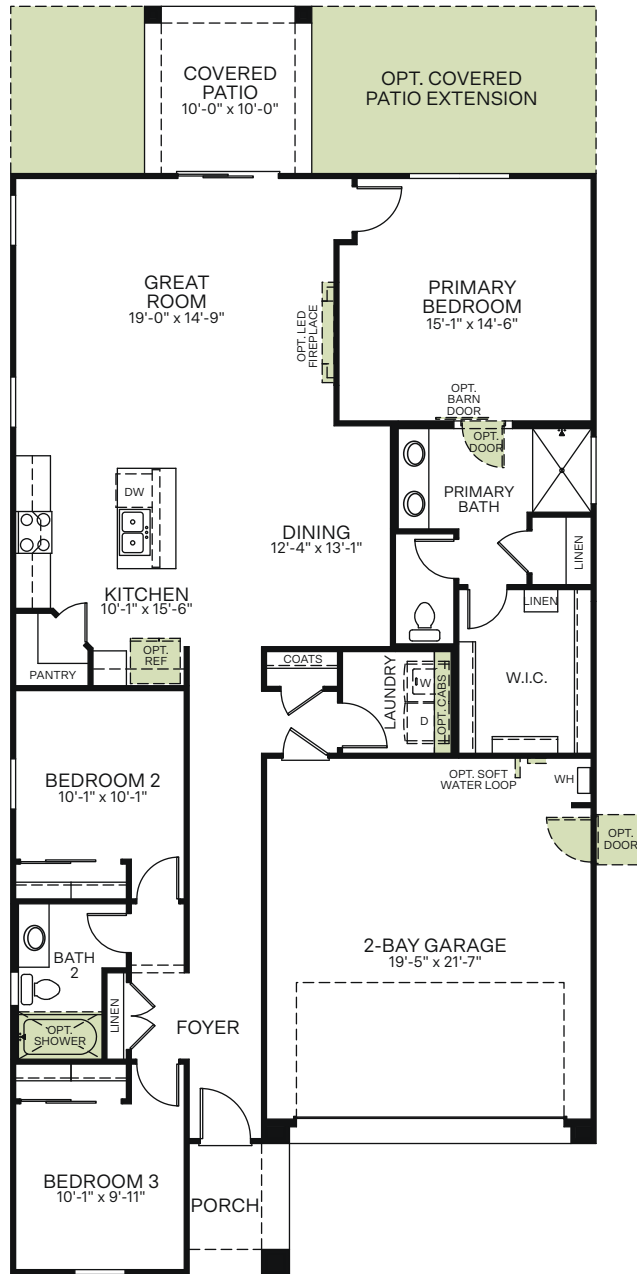
Spanish (A)



Craftsman (B)

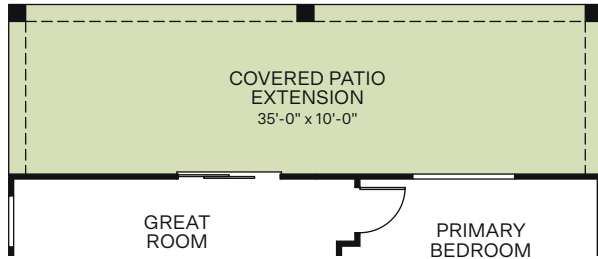


Western Prairie (C)

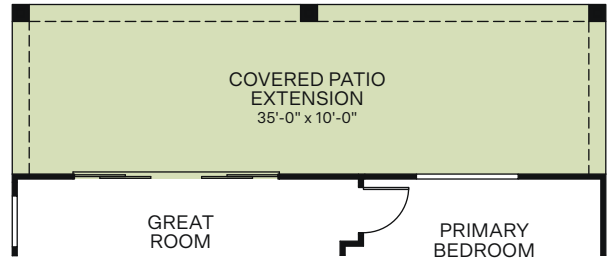


Woodside Homes reserves the right to change floor plans, features, elevations, prices, materials and specifications without notice. All square footages and measurements are approximate. Please see Sales Professional for full details. 04/2023

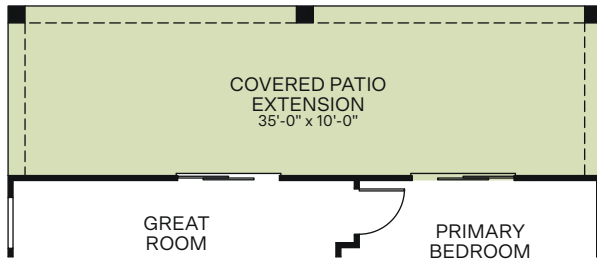
OPTIONS



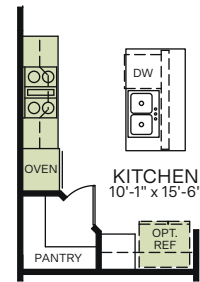
OPTIONAL COVERED PATIO EXTENSION



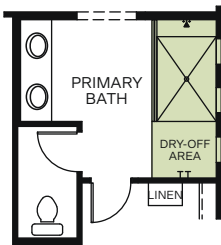
OPTIONAL 12 FT. CENTER SLIDING GLASS DOOR
AT GREAT ROOM
(ONLY AVAILABLE WITH COVERED PATIO EXTENSION)



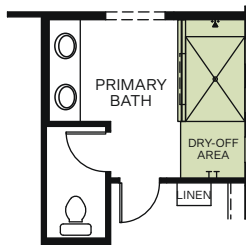
OPTIONAL 6 FT. SLIDING GLASS DOOR
AT PRIMARY BEDROOM
(ONLY AVAILABLE WITH COVERED PATIO EXTENSION)



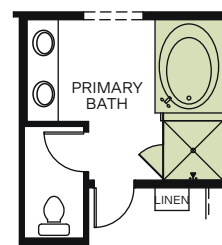
OPTIONAL KITCHEN
APPLIANCE LAYOUT



OPTIONAL EXTENDED
SHOWER WITH FULL GLASS
AT PRIMARY BATHROOM



OPTIONAL EXTENDED
SHOWER WITH HALF WALL
AT PRIMARY BATHROOM



OPTIONAL SEPARATE TUB/SHOWER
AT PRIMARY BATHROOM