

Two Story • 2,462 Sq. Ft. • 3 Bedrooms • 2.5 Baths • 2-Bay Garage with Tandem



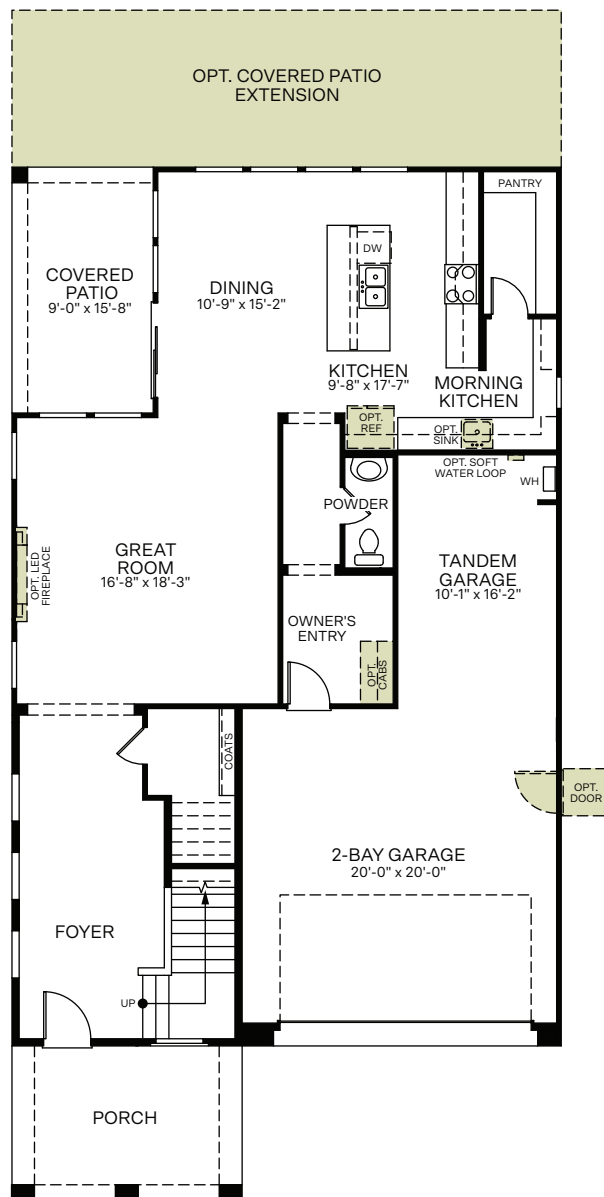
Spanish (A)



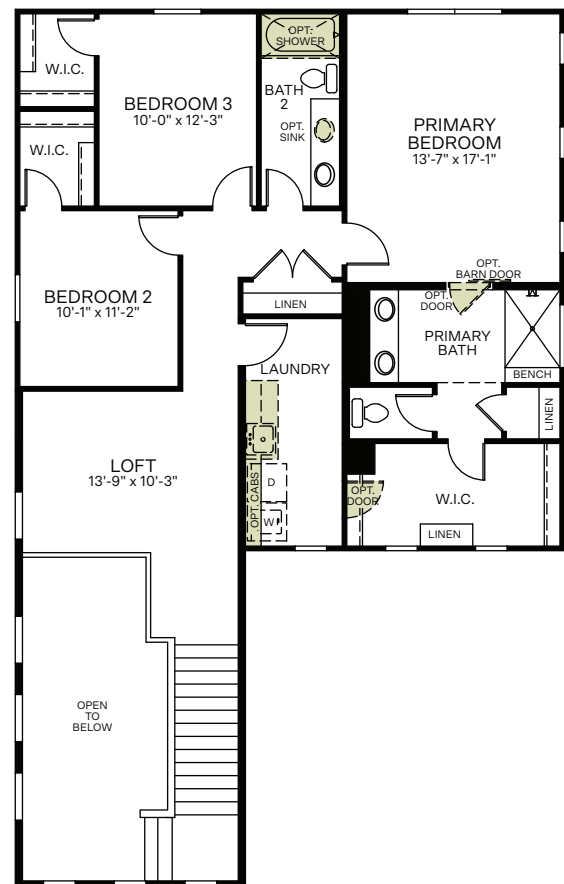
Craftsman (B)



Western Prairie (C)



FIRST FLOOR



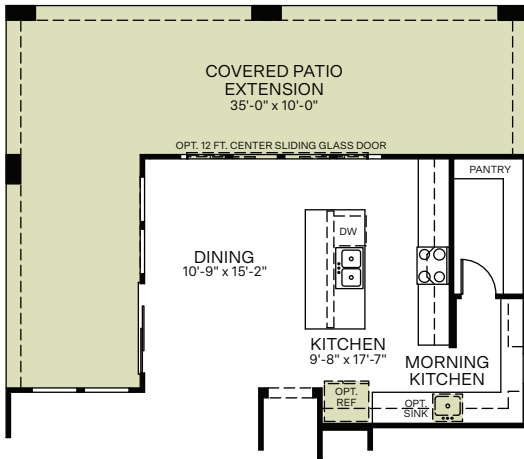
SECOND FLOOR



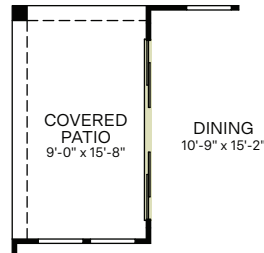
Woodside Homes reserves the right to change floor plans, features, elevations, prices, materials and specifications without notice. All square footages and measurements are approximate. Please see Sales Professional for full details.
02/2022



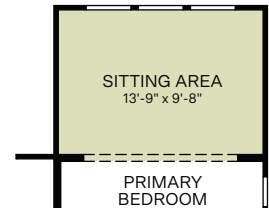
OPTIONS



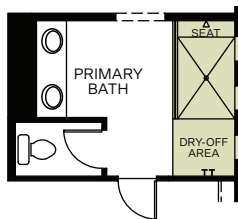
OPTIONAL COVERED PATIO EXTENSION
(OPTIONAL 12 FT. CENTER SLIDING GLASS DOOR ONLY
AVAILABLE WITH COVERED PATIO EXTENSION)



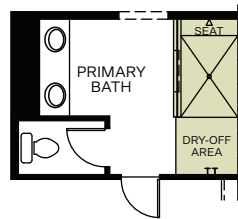
OPTIONAL 12 FT. CENTER SLIDING
GLASS DOOR AT DINING



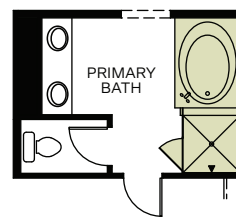
OPTIONAL SITTING AREA
AT PRIMARY BEDROOM
(ONLY AVAILABLE WITH COVERED PATIO EXTENSION)



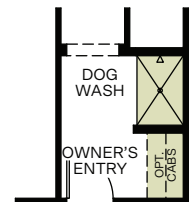
OPTIONAL EXTENDED SHOWER WITH
FULL GLASS AT PRIMARY BATHROOM



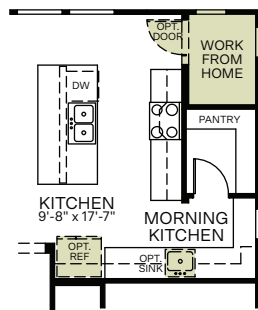
OPTIONAL EXTENDED SHOWER WITH
HALF WALL AT PRIMARY BATHROOM



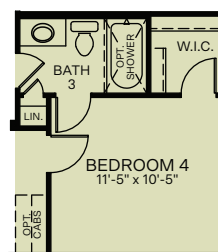
OPTIONAL SEPARATE TUB/SHOWER
AT PRIMARY BATHROOM



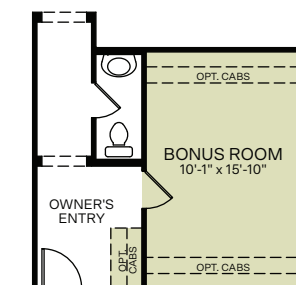
OPTIONAL PET STATION
(NOT AVAILABLE WITH BONUS
ROOM OR BEDROOM 4)



OPTIONAL WORK FROM HOME



OPTIONAL BEDROOM 4 WITH
BATH 3 ILO TANDEM GARAGE
(NOT AVAILABLE WITH BONUS ROOM OR PET STATION)



OPTIONAL BONUS ROOM ILO TANDEM GARAGE
(NOT AVAILABLE WITH PET STATION OR BEDROOM 4)

