

**Style / 6034**

Single-Story • 3,465 Sq. Ft. • 4 Bedrooms • 4.5 Baths • Great Room • Kitchen with Island • Walk-in Pantry • Laundry • Owner's Entry • Covered Patio • Teen Room • Flex Room • Morning Kitchen • 3-Bay Garage



**Spanish (A)**



**Ranch (B)**



**Tuscan (C)**

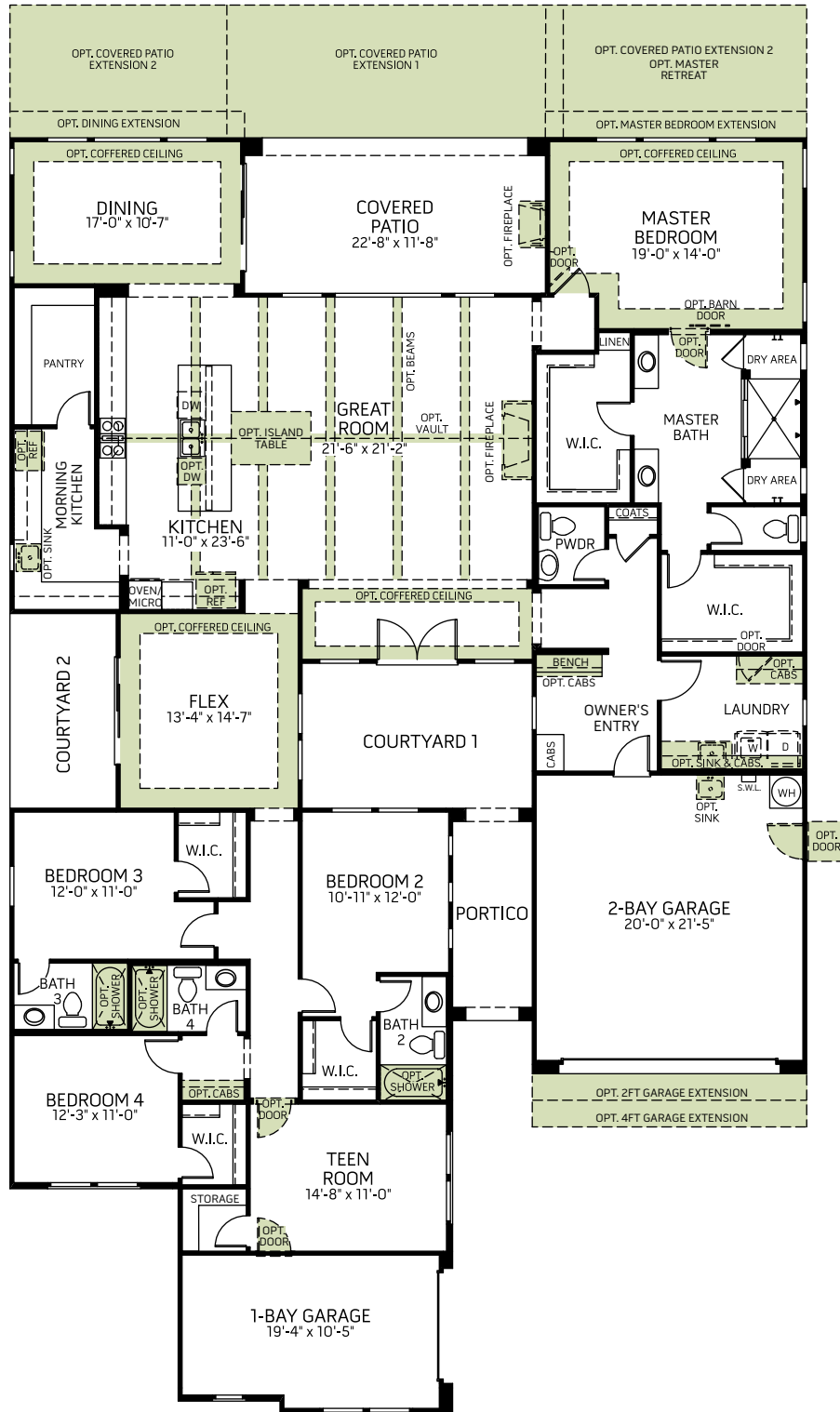
Woodside Homes reserves the right to change floor plans, maps, prices, and specifications without notice. Prices are subject to change without notice. The model information listed, including availability, floor plans, elevations, features, and other information are subject to change. Model home interior decorating, landscaping, fencing, and other amenities are for display purposes only. All renderings, floor plans, and maps are artist conceptions and are not intended to be an actual depiction of the buildings, fencing, driveways, or landscaping. Optional features may be included at additional cost and are subject to construction cut-off dates. All square foot measurements, elevations, features, and floor plans are approximate. This advertisement is for illustration purposes only and not part of a legal contract. Please see Sales Representative for full details, and additional information about options shown dashed on base floor plan. Woodside Homes Sales AZ, LLC. 07/2022



#EleganceAtEastmark  
WoodsideHomes.com/Arizona



**Style / 6034**



**FLOOR PLAN**

Woodside Homes reserves the right to change floor plans, maps, prices, and specifications without notice. Prices are subject to change without notice. The model information listed, including availability, floor plans, elevations, features, and other information are subject to change. Model home interior decorating, landscaping, fencing, and other amenities are for display purposes only. All renderings, floor plans, and maps are artist conceptions and are not intended to be an actual depiction of the buildings, fencing, driveways, or landscaping. Optional features may be included at additional cost and are subject to construction cut-off dates. All square foot measurements, elevations, features, and floor plans are approximate. This advertisement is for illustration purposes only and not part of a legal contract. Please see Sales Representative for full details, and additional information about options shown dashed on base floor plan. Woodside Homes Sales AZ, LLC. 07/2022



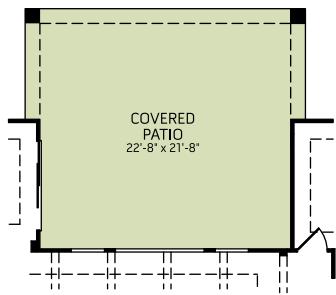
#EleganceAtEastmark

WoodsideHomes.com/Arizona

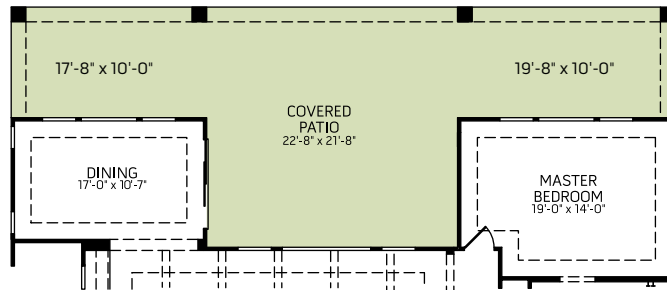


**Style / 6034**

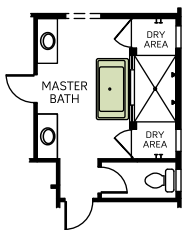
**OPTIONS**



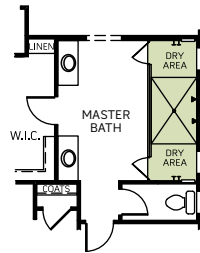
OPTIONAL COVERED PATIO EXTENSION 1



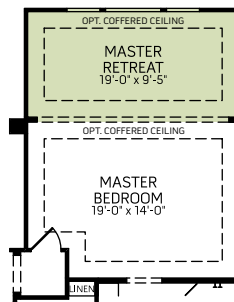
OPTIONAL COVERED PATIO EXTENSION 2



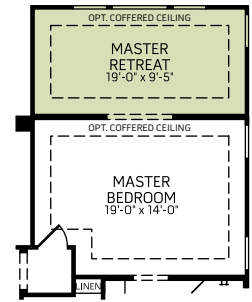
OPTIONAL FREE STANDING TUB



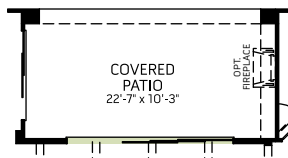
OPTIONAL FULL GLASS SHOWER



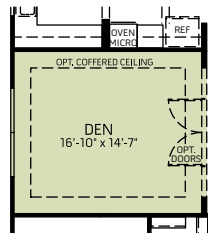
OPTIONAL MASTER RETREAT



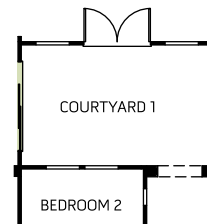
OPTIONAL MASTER RETREAT -PARTIALLY ENCLOSED



OPTIONAL 15FT MULTI-SLIDE DOOR AT GREAT ROOM



OPTIONAL DEN ILO FLEX/COURTYARD 2



OPTIONAL SLIDING GLASS DOOR

Woodside Homes reserves the right to change floor plans, maps, prices, and specifications without notice. Prices are subject to change without notice. The model information listed, including availability, floor plans, elevations, features, and other information are subject to change. Model home interior decorating, landscaping, fencing, and other amenities are for display purposes only. All renderings, floor plans, and maps are artist conceptions and are not intended to be an actual depiction of the buildings, fencing, driveways, or landscaping. Optional features may be included at additional cost and are subject to construction cut-off dates. All square foot measurements, elevations, features, and floor plans are approximate. This advertisement is for illustration purposes only and not part of a legal contract. Please see Sales Representative for full details, and additional information about options shown dashed on base floor plan. Woodside Homes Sales AZ, LLC. 07/2022

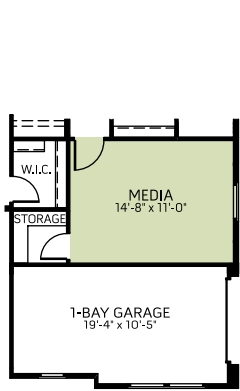


#EleganceAtEastmark  
WoodsideHomes.com/Arizona

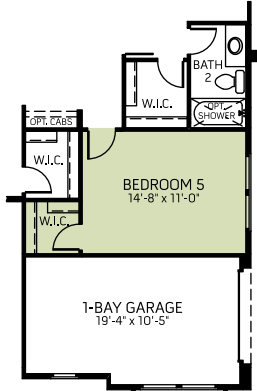


**Style / 6034**

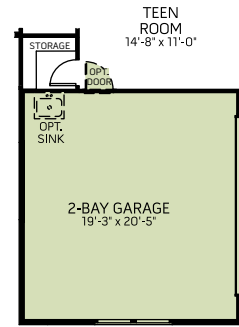
**OPTIONS**



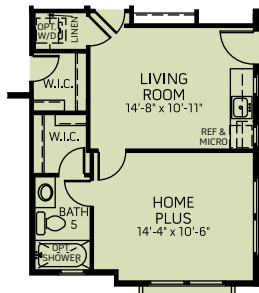
**OPTIONAL MEDIA ROOM  
ILO TEEN ROOM**  
(not available with home plus options)  
(not available with teen room options)  
(not available with bedroom 5 option)



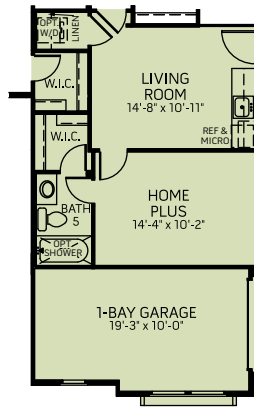
**OPTIONAL BEDROOM 5  
ILO TEEN ROOM**  
(not available with home plus options)  
(not available with teen room options)  
(not available with media option)



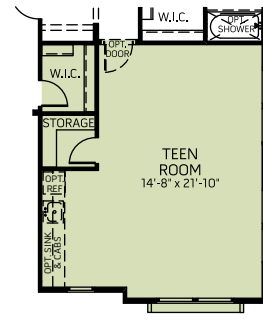
**OPTIONAL 2-BAY SIDE LOAD GARAGE  
ILO 1-BAY GARAGE**  
(not available with home plus options)  
(not available with teen room options)



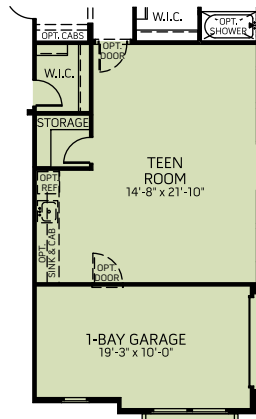
**OPTIONAL HOME PLUS  
ILO 1-BAY GARAGE AND TEEN ROOM**  
(not available with teen room options)  
(not available with 2-bay garage option)  
(not available with media/bedroom 5 options)



**OPTIONAL HOME PLUS WITH 1-BAY GARAGE  
ILO 1-BAY GARAGE AND TEEN ROOM**  
(not available with teen room options)  
(not available with 2-bay garage option)  
(not available with media/bedroom 5 options)



**OPTIONAL TEEN ROOM EXTENSION  
ILO 1-BAY GARAGE**  
(not available with home plus options)  
(not available with 2-bay garage option)  
(not available with media/bedroom 5 options)



**OPTIONAL TEEN ROOM EXTENSION WITH 1-BAY GARAGE  
ILO 1-BAY GARAGE AND TEEN ROOM**  
(not available with home plus options)  
(not available with 2-bay garage option)  
(not available with media/bedroom 5 options)

Woodside Homes reserves the right to change floor plans, maps, prices, and specifications without notice. Prices are subject to change without notice. The model information listed, including availability, floor plans, elevations, features, and other information are subject to change. Model home interior decorating, landscaping, fencing, and other amenities are for display purposes only. All renderings, floor plans, and maps are artist conceptions and are not intended to be an actual depiction of the buildings, fencing, driveways, or landscaping. Optional features may be included at additional cost and are subject to construction cut-off dates. All square foot measurements, elevations, features, and floor plans are approximate. This advertisement is for illustration purposes only and not part of a legal contract. Please see Sales Representative for full details, and additional information about options shown dashed on base floor plan. Woodside Homes Sales AZ, LLC. 07/2022



#EleganceAtEastmark

WoodsideHomes.com/Arizona

