

Ashwood at Cadence

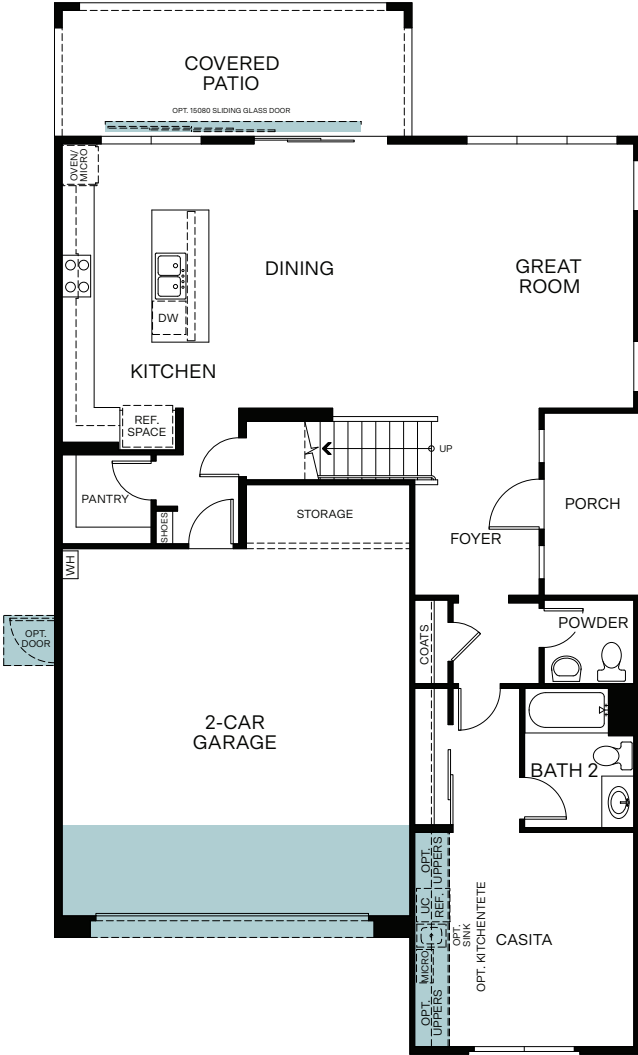
Plan 3-Aster



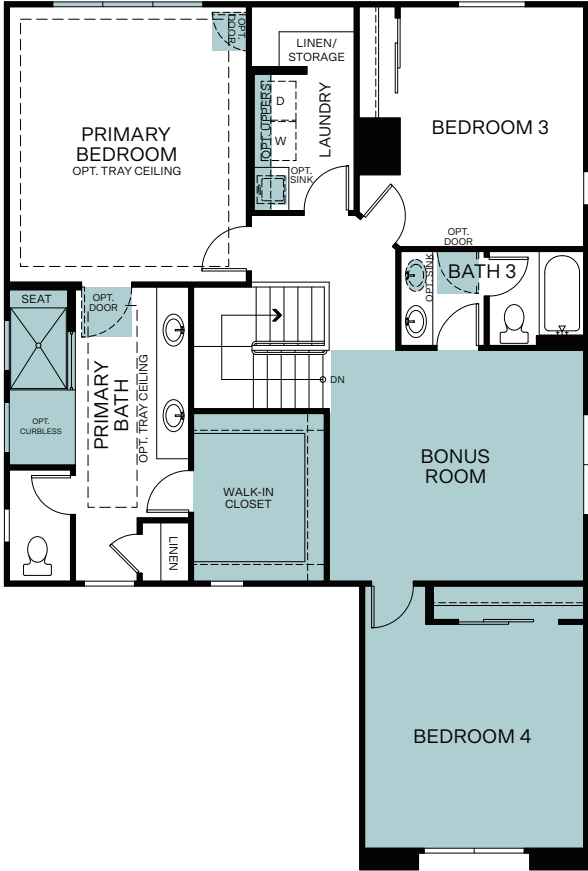
Two Story 2,567 Sq. Ft.

PLAN 3 - ASTER

2,567 Finished Sq. Ft. • 4 Bedrooms • 3.5 Baths



FIRST FLOOR



SECOND FLOOR

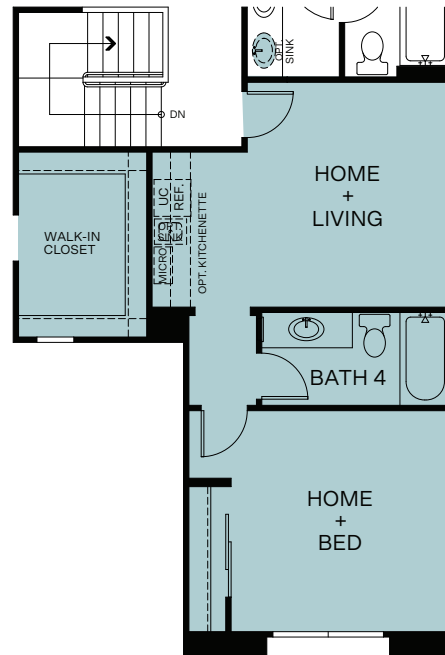
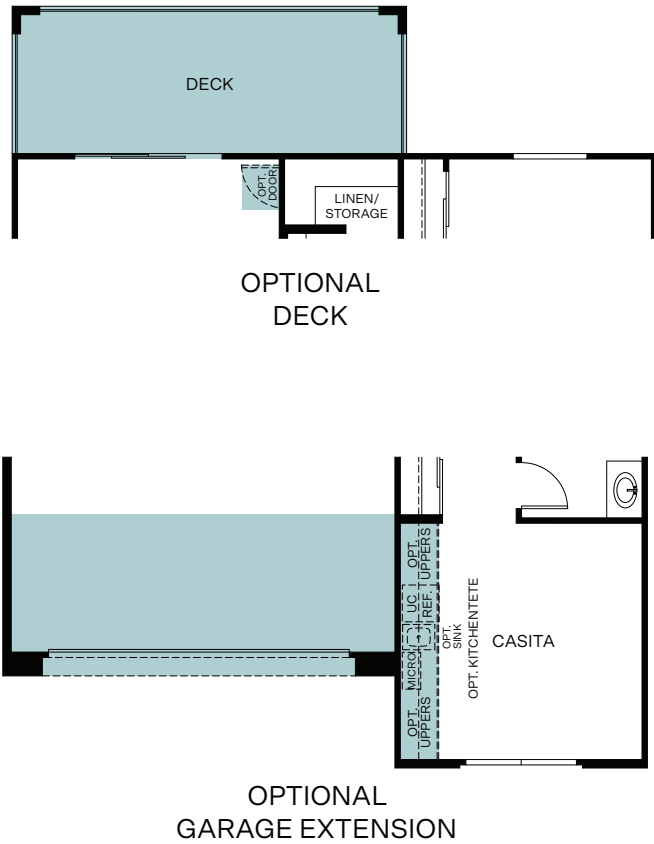


Woodside Homes reserves the right to change floor plans, features, elevations, prices, materials and specifications without notice. All square footages and measurements are approximate. Please see Sales Professional for full details. 04/2024

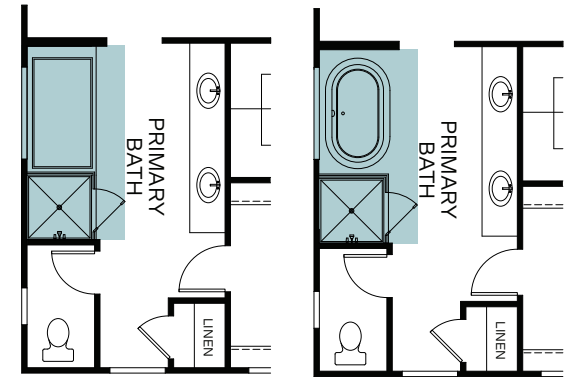


PLAN 3 - ASTER

2,567 Finished Sq. Ft. • 4 Bedrooms • 3.5 Baths



OPTIONAL HOME PLUS ILO
BONUS/BEDROOM



OPTIONAL
DROP-IN TUB

OPTIONAL
FREESTANDING TUB



Woodside Homes reserves the right to change floor plans, features, elevations, prices, materials and specifications without notice. All square footages and measurements are approximate. Please see Sales Professional for full details. 04/2024

