

# Piermont at Cadence

CHELSEA PLAN 1



Spanish Colonial

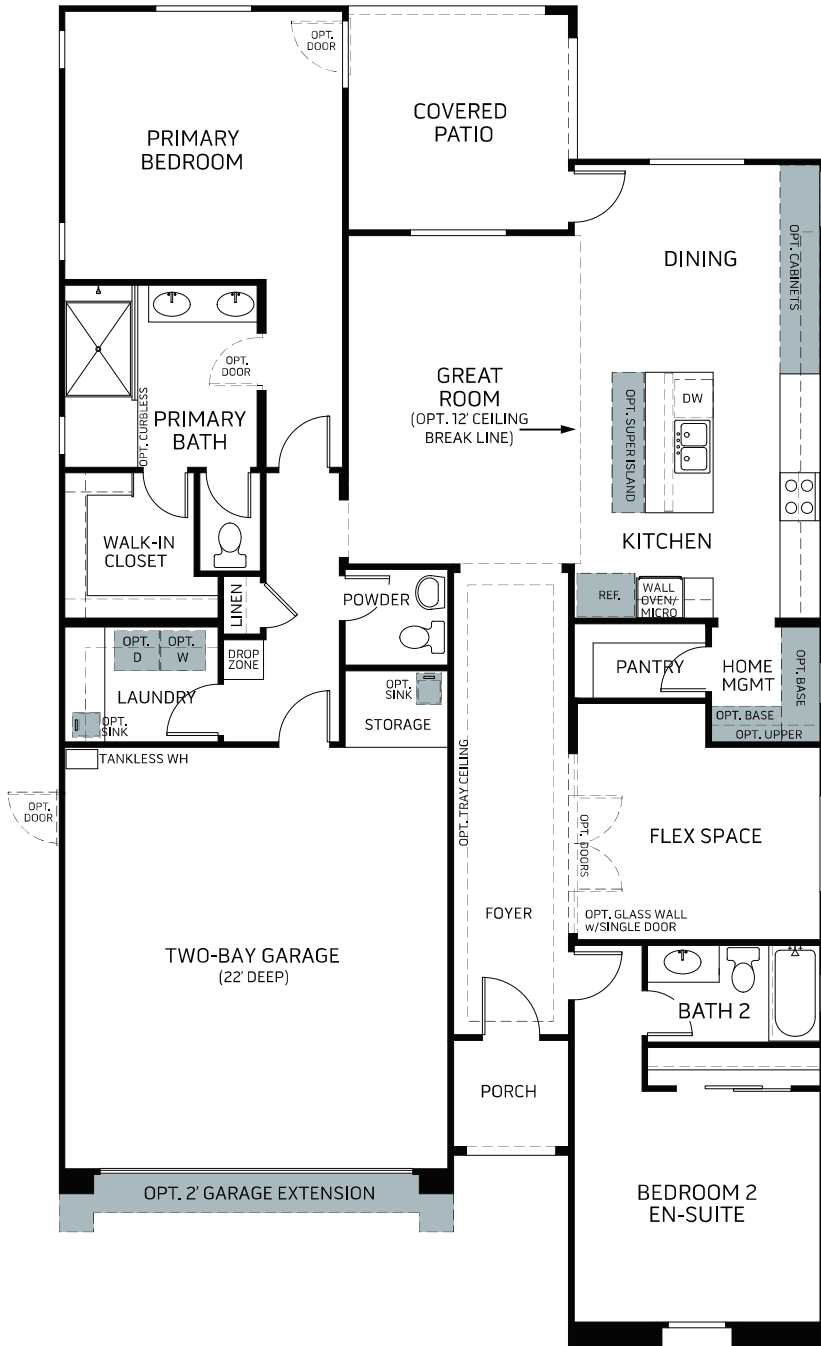


Monterey

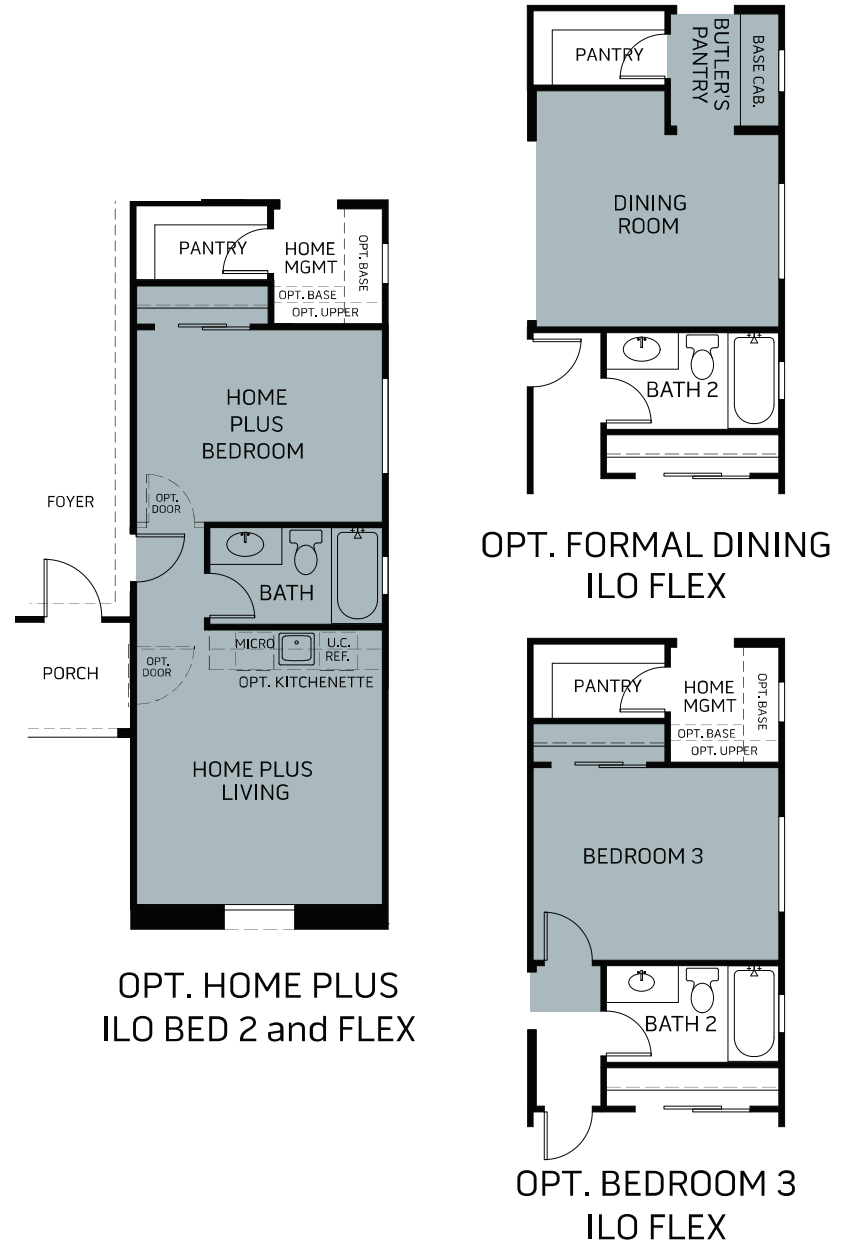


Tuscan

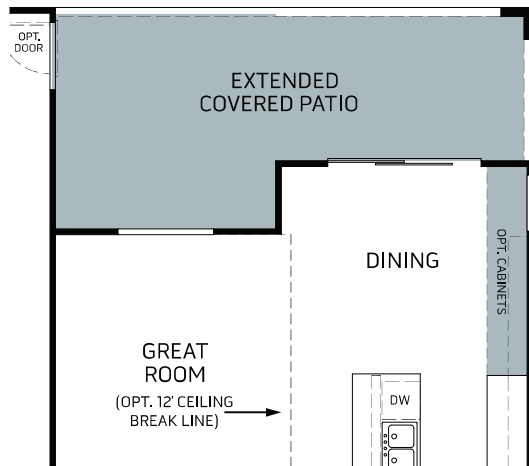
SINGLE STORY | 1,788 SQ. FT.



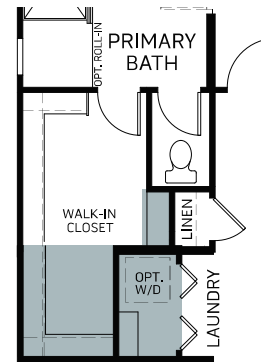
CHELSEA PLAN 1 OPTIONAL FEATURES



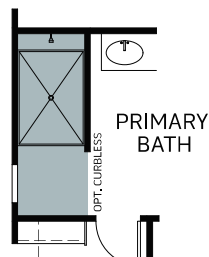
# CHELSEA PLAN 1 OPTIONAL FEATURES



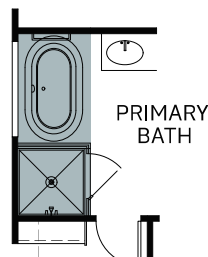
**OPT. EXTENDED COVERED PATIO w/8' SLIDER AT DINING**



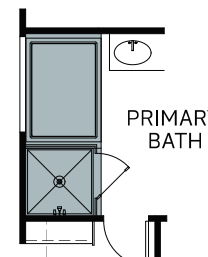
**OPT. ALTERNATE LAUNDRY w/EXTENDED WALK-IN CLOSET**  
(TO ACCOMMODATE OPT. STACKED WASHER/DRYER)



**OPT. FULL WALL AT SHOWER**



**OPT. FREE STANDING TUB**



**OPT. DROP-IN TUB**



Woodside Homes reserves the right to change floor plans, features, elevations, prices, materials and specifications without notice. All square footages and measurements are approximate. Please see Sales Professional for full details.  
DEC2022

