

GUINEVERE - 4630



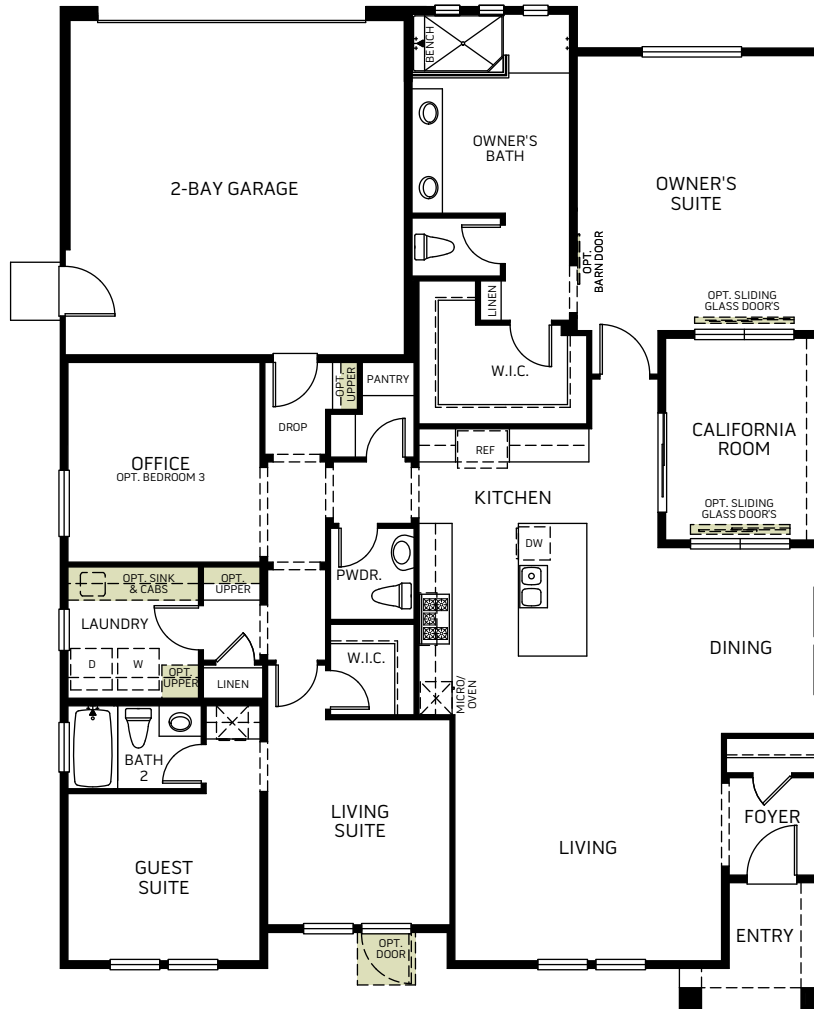
A - Stucco Bungalow

B - Farmhouse

C - Craftsman

D - Modern Prairie

One Story • 2,027 Sq. Ft • 2-4 Bedrooms • 2.5 Baths • Guest Suite • Office
Living Room • Living Suite • Kitchen with Island • Dining • Den • 2-Bay Garage



FLOOR PLAN

Woodside Homes reserves the right to change elevations, specifications, materials and prices without notice. All square footages are approximate. Window location, porches, ceiling heights and room dimensions vary per elevation. The availability of certain options is subject to construction status and schedule. Optional features may be predetermined and included at additional cost on select homes. Renderings are artist's conception only.



GUINEVERE - 4630

OPTIONS



A - Stucco Bungalow



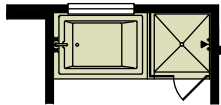
B - Farmhouse



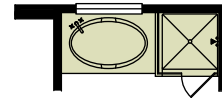
C - Craftsman



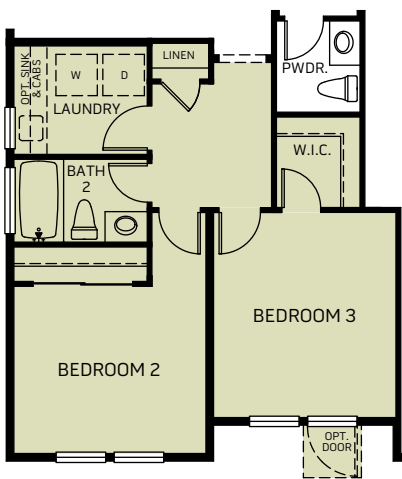
D - Modern Prairie



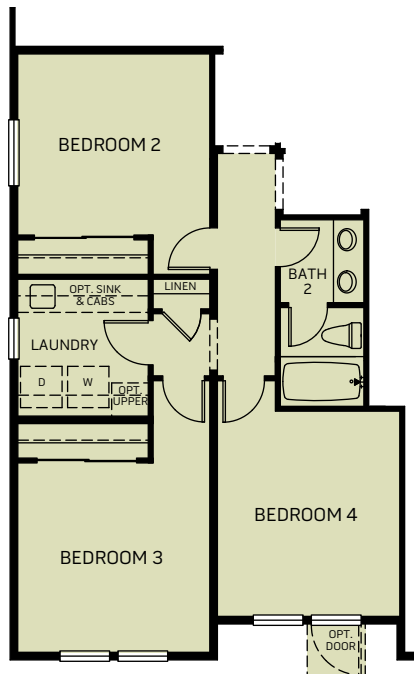
OPT. SHOWER/ TUB IN OWNER'S BATH



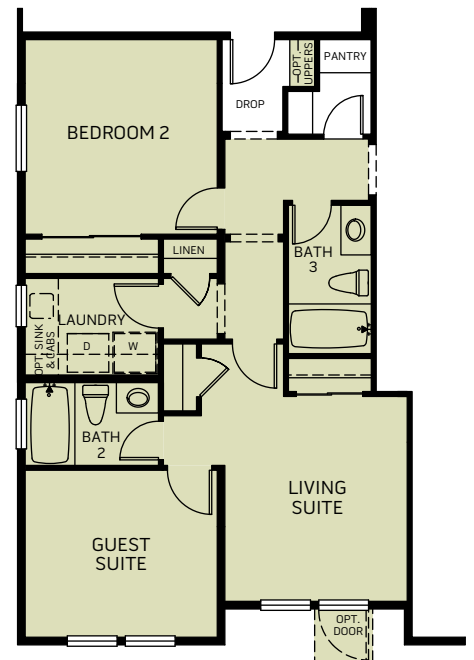
OPT. SHOWER/ TUB IN OWNER'S BATH



OPT. BEDROOM 2 & 3 AT GUEST SUITE



OPT. BEDROOM 2, 3 & 4 ILO OFFICE, GUEST AND LIVING



OPT. BEDROOM 2 AT OFFICE



Woodside Homes reserves the right to change elevations, specifications, materials and prices without notice. All square footages are approximate. Window location, porches, ceiling heights and room dimensions vary per elevation. The availability of certain options is subject to construction status and schedule. Optional features may be predetermined and included at additional cost on select homes. Renderings are artist's conception only.

