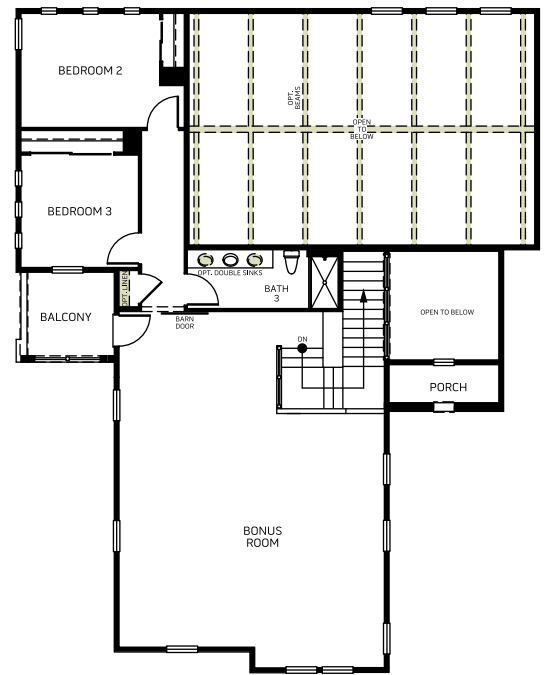
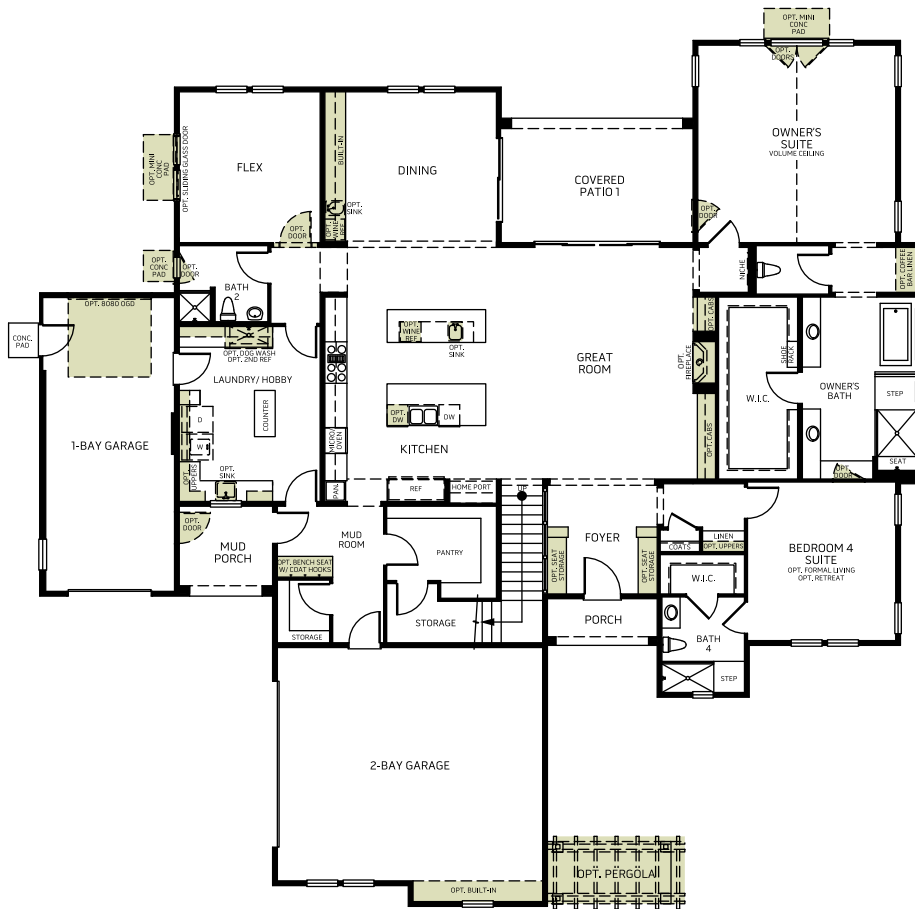


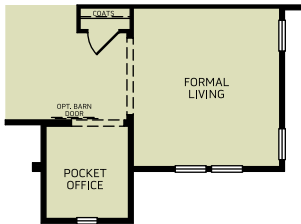
The Orchard House w/ Bonus - 8531

Two Story • 4,872 Sq. Ft • 2-6 Bedrooms • 3-5 Baths
Great Room • Kitchen with Island • Nook • Dining • Flex • 3-Bay Garage



The Orchard House w/ Bonus - 8531

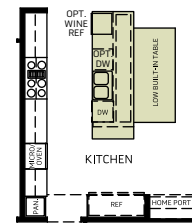
OPTIONS



OPT. FORMAL LIVING AT BEDROOM 4 SUITE



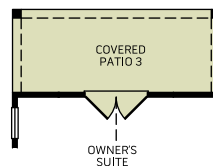
OPT. BEDROOM 5 AT FLEX



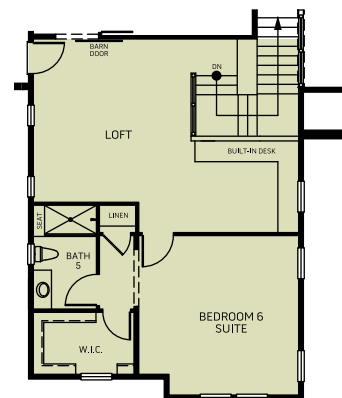
OPT. KITCHEN ISLAND
BUILT-IN TABLE



OPT. BUNK ROOM ILO
BEDROOM 2 & 3



OPT. COVERED PATIO 3



OPT. BEDROOM 6 & BATH 5
AT BONUS ROOM

Woodside Homes reserves the right to change elevations, specifications, materials and prices without notice. All square footages are approximate. Window location, porches, ceiling heights and room dimensions vary per elevation. The availability of certain options is subject to construction status and schedule. Optional features may be predetermined and included at additional cost on select homes. Renderings are artist's conception only.



WoodsideHomes.com

Alison.Kuenzinger@woodsidehomes.com