

THE HIBISCUS - 5056



A - Cottage



B - Craftsman



C - Farmhouse

Two Story • 3,370 - 3,565 Sq. Ft. • 5 Bedrooms • 4 Baths
Great Room • Kitchen with Island • Dining • Game Room • 2-Bay Plus Tandem Garage



Woodside Homes reserves the right to change elevations, specifications, materials and prices without notice. All square footages are approximate. Window location, porches, ceiling heights and room dimensions vary per elevation. The availability of certain options is subject to construction status and schedule. Optional features may be predetermined and included at additional cost on select homes. Renderings are artist's conception only.



WoodsideHomes.com/Fresno
Debbie@WoodsideHomes.com

THE HIBISCUS - 5056

OPTIONS



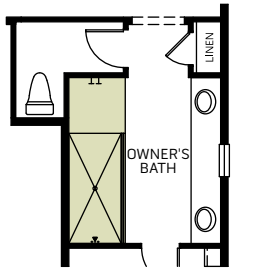
A - Cottage



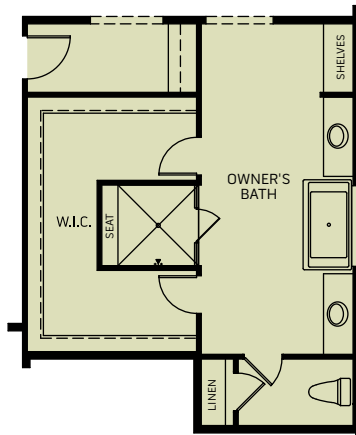
B - Craftsman



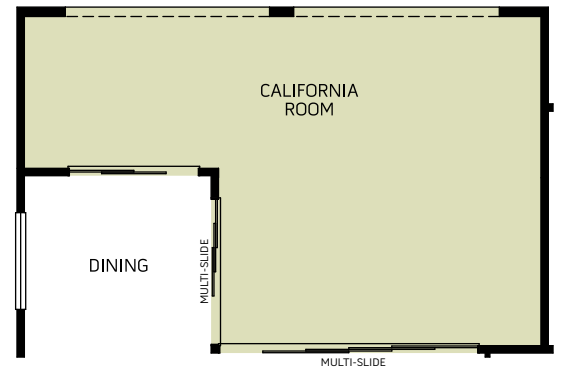
C - Farmhouse



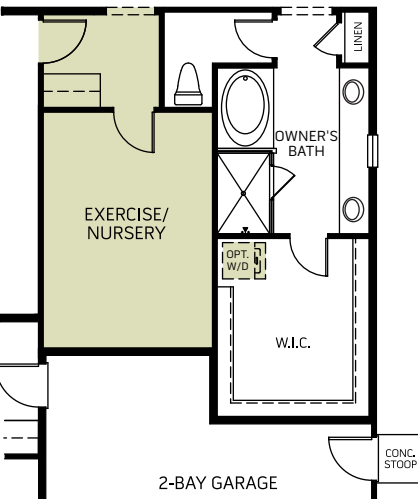
OPT. WALK-IN SHOWER
AT OWNER'S BATH



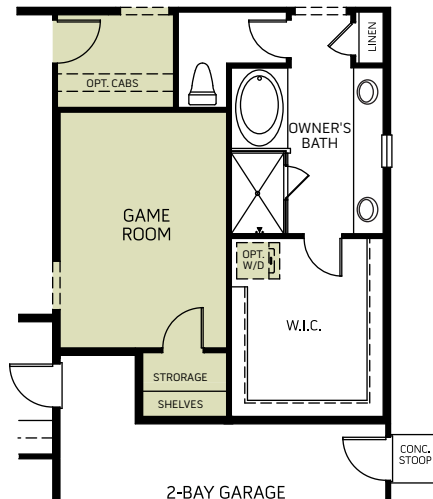
OPT. OWNER'S BATH AT TANDEM
+148 SQ. Ft.



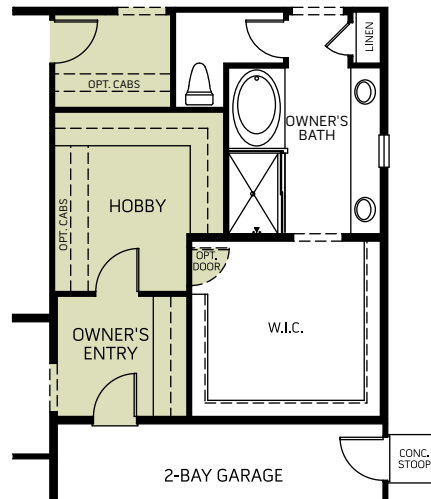
OPT. CALIFORNIA ROOM



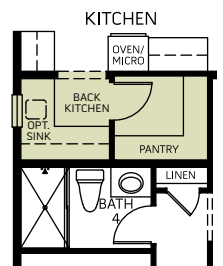
OPT. EXERCISE/NURSERY AT TANDEM
+152 SQ. Ft.



OPT. GAME ROOM AT TANDEM
+152 SQ. Ft.



OPT. HOBBY
+195 SQ. Ft.



OPT. BACK KITCHEN