

WoodsideHomes.com

Let's get you home.

Bayview At Shoreline

CEDAR



Traditional (A)



Farmhouse (B)

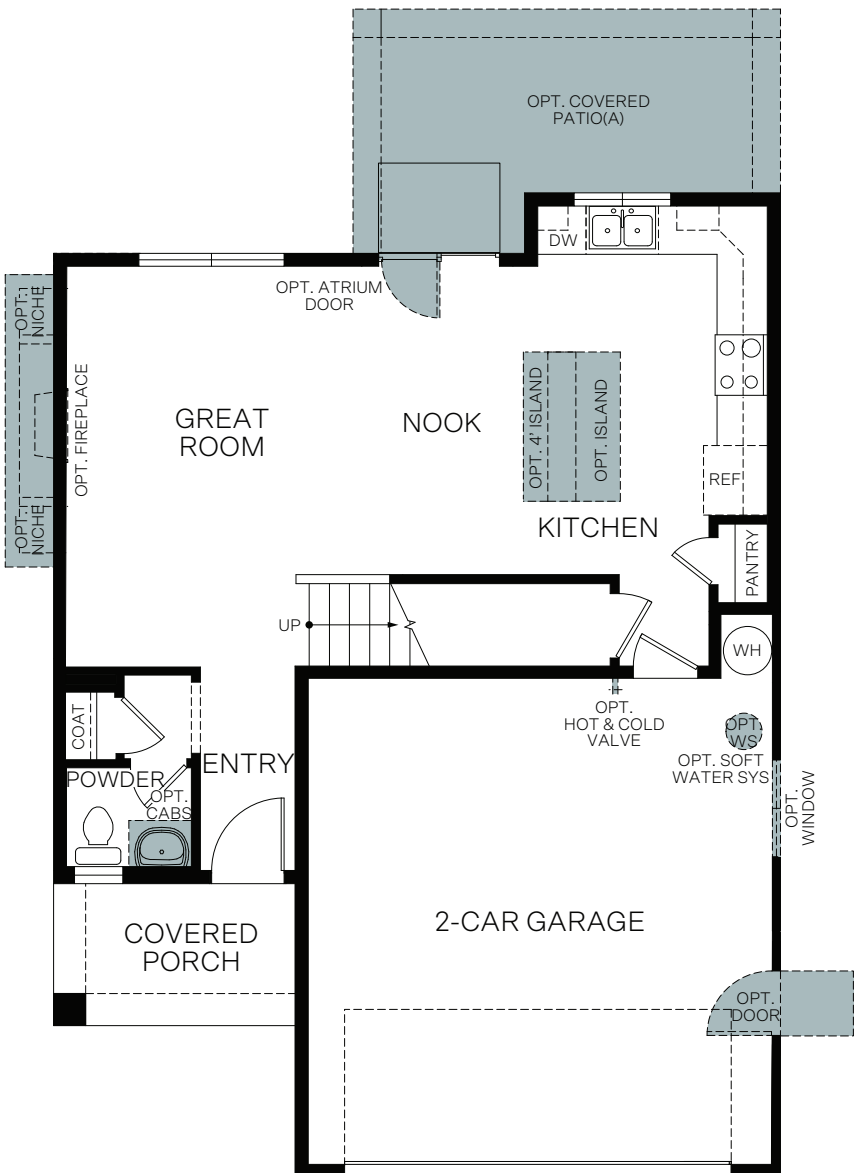


Craftsman (C)

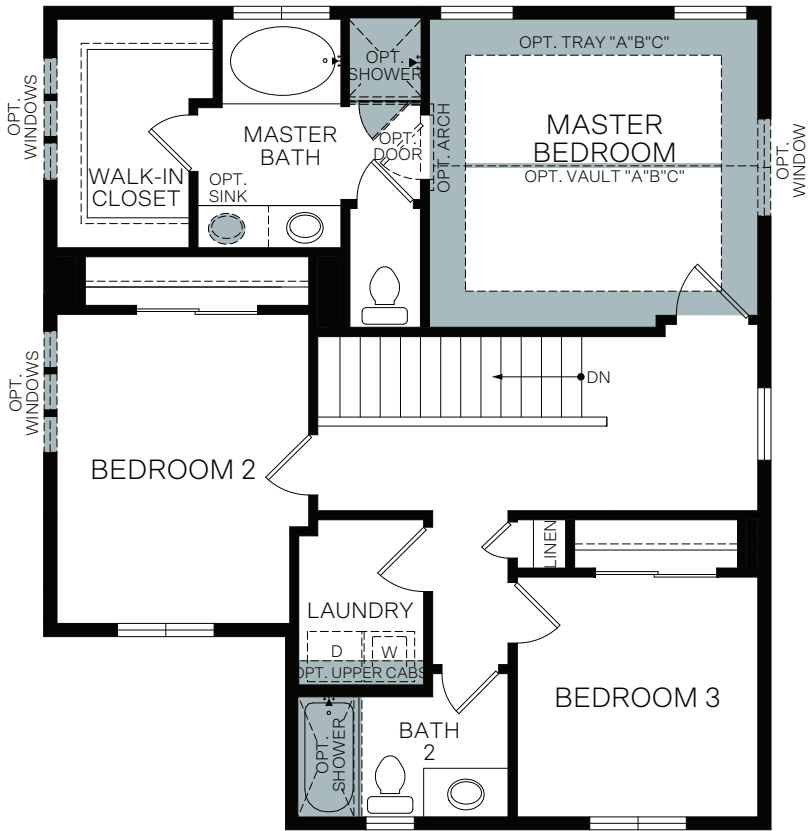


Prairie (D)

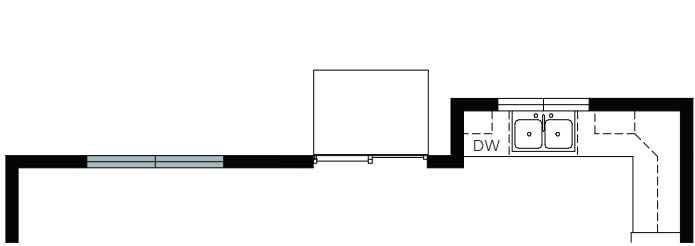
TWO-STORY 1,529 SQ. FT.



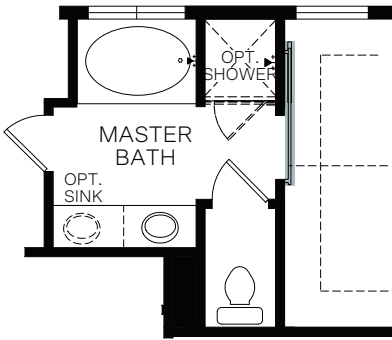
FIRST FLOOR
629 Sq. Ft.



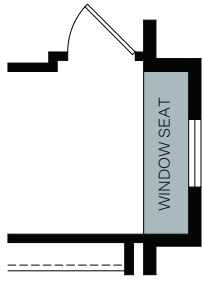
SECOND FLOOR
900 Sq. Ft.



OPT. TRANSOM WINDOW PACKAGE



OPT. BARN DOOR AT MASTER BATH



OPT. WINDOW SEAT
Adds: 16 Sq. Ft.



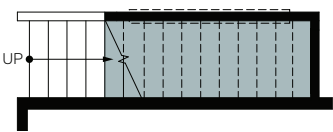
OPT. PET DEN



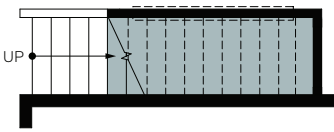
OPT. CHARGING STATION



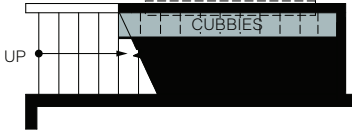
OPT. CHARGING STATION
WITH SHELVES



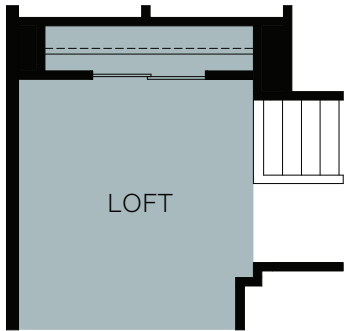
OPT. OFFICE SPACE
AT STAIRS



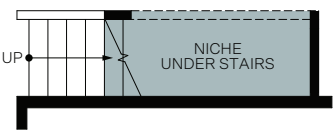
OPT. READING NOOK
AT STAIRS



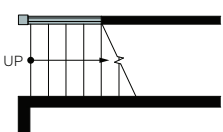
OPT. CUBBIES AT STAIRS



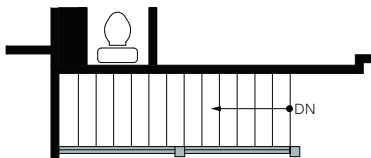
LOFT



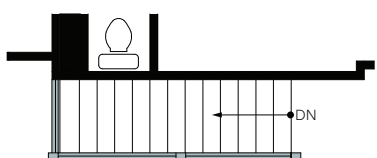
OPT. NICHE UNDER
AT STAIRS



OPT. RAILING 1



OPT. RAILING 2



OPT. RAILING 3