

PLAN 4A (PRELIMINARY)



A: Mediterranean Revival



B: Farmhouse Victorian

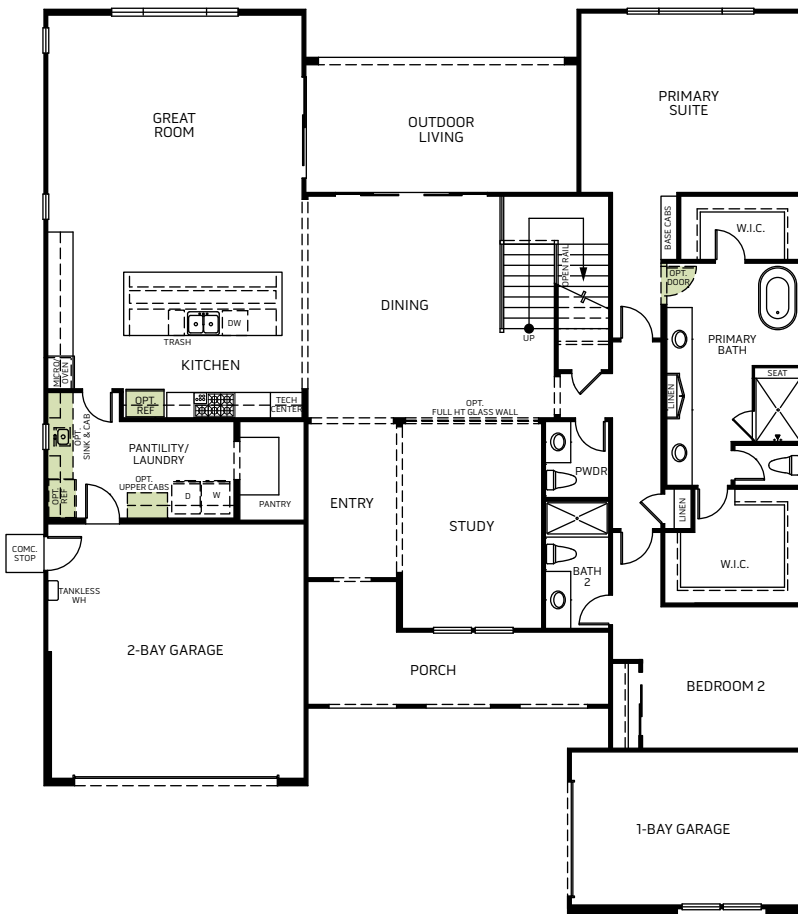


C: European Country

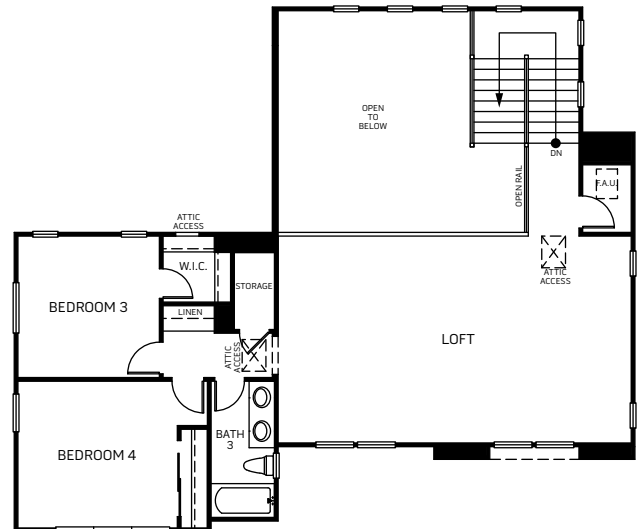


D: Craftsman

Two Story • 3,613 Sq. Ft. • 4 Bedrooms • 3.5 Baths
Great Room • Kitchen with Island • Dining • Study • Loft • 3-Bay Garage



FIRST FLOOR



SECOND FLOOR



Woodside Homes reserves the right to change elevations, specifications, materials and prices without notice. All square footages are approximate. Window location, porches, ceiling heights and room dimensions vary per elevation. The availability of certain options is subject to construction status and schedule. Optional features may be predetermined and included at additional cost on select homes. Renderings are artist's conception only. REV 09/20



WoodsideHomes.com/Norcal
2275 Augusta Ave, Tracy, CA 95377
MyNewHome-NorCal@WoodsideHomes.com
877-231-0059 or 916-597-4079