

Enhance Construction Project Management with the Procure & Matterport Integration

Identify issues sooner and achieve efficient project outcomes with immersive 3D clarity of the job site.

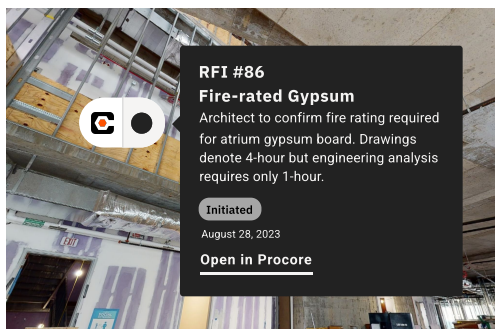
When it comes to construction projects, effective collaboration is the cornerstone of success. In the fast-paced world of construction management, customers are constantly seeking innovative solutions to boost productivity and streamline their digital transformation journey. However, with a vast array of options available, choosing the right tools can be overwhelming. Traditional project management software often falls short in providing the visual context necessary for effective communication, resulting in potential misinterpretation and costly delays.

To tackle these challenges head-on, customers require a single, comprehensive platform that not only manages projects but also facilitates seamless collaboration with crystal-clear visual site context. By harnessing the power of advanced technologies, such as digital twins and integrated visualization tools, construction teams can achieve unparalleled clarity and precision in their project management processes.

Procure & Matterport Integration Overview

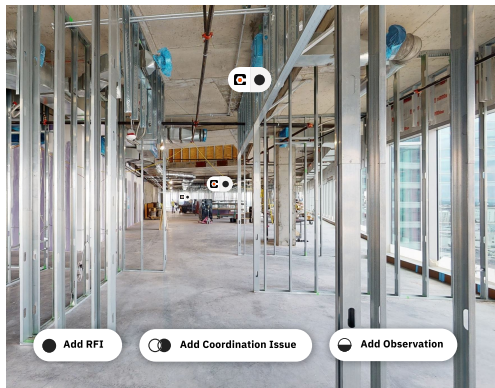
The Procure and Matterport partnership paves a path to a more efficient and innovative construction project management solution. By merging the leading spatial data platform with the construction industry's premier project management software, we have created an integration that ensures seamless collaboration among all project stakeholders.

With our joint integration, general contractors, specialty contractors, owners and other collaborators (such as architects or engineers) can work together effortlessly throughout the entire project lifecycle. The integration allows for easy upload of MatterPak and BIM files to Procure Documents as well as the addition of Requests for Information (RFIs), Observations, or Coordination Issues directly within the Matterport digital twin. This means that every stakeholder can gain clear visual context, making issue resolution faster and more efficient.



The Power of Visual Context for Seamless Resolution

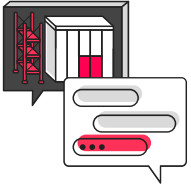
Procure offers a central hub for collaboration and information sharing and Matterport provides access to detailed photorealistic and time stamped site conditions, reducing the chance of miscommunication and delays. The Matterport digital twin provides an immersive 3D representation of the construction site, allowing all stakeholders to remotely view the exact location and extent of each issue. With this level of detail, everyone involved can better understand the problem and propose targeted solutions. By streamlining the issue resolution process, you can save valuable time and resources, ultimately maximizing project efficiency.



Minimizing Change Orders: Address Issues Early On

By addressing issues early on, you can minimize costly change orders down the line. Change orders can be a major headache in construction projects, leading to increased costs and delays. The Procure and Matterport integration allows you to seamlessly add RFIs, Observations, or Coordination Issues directly within the Matterport digital twin, enabling project teams to identify and address issues early on. This proactive approach improves overall project outcomes. With improved communication, enhanced collaboration, and a shared visual understanding, your team can stay one step ahead and ensure a smooth project delivery.

Key Features



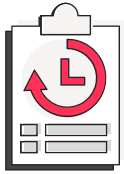
Enhanced Collaboration:

Digital twins allow for better communication and collaboration among contractors, property owners, architects, and other project stakeholders. You can add Request for Information (RFIs), Observations or Coordination Issues directly to the Matterport 3D model. This provides a clear visual site context for any queries or issues, making it easier for all stakeholders to understand and resolve them. It also means you can address these issues early in the process, reducing the likelihood of costly and time-consuming change orders later on.



Improved Project Efficiency:

Project teams will have a quick and comprehensive understanding of site conditions. This will enable early identification of potential issues, improve planning, and streamline construction communication, resulting in enhanced project productivity – reducing miscommunication and facilitating more informed decision-making.



Complete and Accurate Records:

The Procore and Matterport integration will ensure that all project milestones are documented and stored in a centralized location. This comprehensive record-keeping will enable better tracking of progress, quality control, and efficient closeout processes. Easily import Matterport add-ons (BIM File or MatterPak) and collaborate more efficiently with design and build teams.

Use-Cases and Value



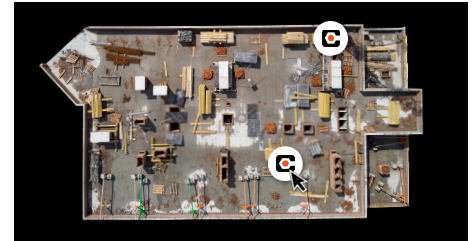
Pre-construction:

Visualize and plan projects more efficiently during the design phase.



Build-Out:

Improve collaboration, communication, and issue resolution throughout the construction process with a combined solution that provides superior project management.



Project Closeout

Keep complete and accurate records of your project, facilitating an efficient closeout and future maintenance plans through 3D documentation and centralized record-keeping.



Matterport, Inc. (Nasdaq: MTTR) is leading the digital transformation of the built world. Our groundbreaking spatial data platform turns buildings into data to make nearly every space more valuable and accessible. Millions of buildings in more than 177 countries have been transformed into immersive Matterport digital twins to improve every part of the building lifecycle from planning, construction, and operations to documentation, appraisal, and marketing. Learn more at [Matterport.com](https://matterport.com) and visit our Discover page to browse a collection of digital twins captured by our customers.



Procore Technologies, Inc. (NYSE: PCOR) creates software for people who build the world. With a focus on providing timely and accurate data for all, Procore transforms the construction industry one project at a time - from hospitals and skyscrapers to airports and stadiums. Beyond its connected, innovative technology, Procore empowers the industry and its communities through [Procore.org](https://procore.org). For more information, visit www.procore.com.

Take Action Today

Learn more and contact us by scanning below

www.matterport.com 888-993-8990

[Learn More](#)