

Autodesk BIM 360 Integration

View 3D Digital Twins in BIM 360 to streamline workflows, documentation and stakeholder collaboration

Matterport is the leading spatial data company focused on digitizing and indexing the built world. We enable anyone to create and share digital twins of the built world to be able to understand any space. We offer the most powerful, immersive, accessible and easy-to-use spatial data platform in the world.

With the Matterport Showcase embedded experience you can

- View Matterport 3D models on your BIM 360 project page by simply adding a URL generated by Showcase.
- Now, you can access and walk through a digital twin a job site at any time while reviewing documents or submittals.

Integration Summary

With the new supported Matterport Partner Card, your field to office coordination just got a major boost. Now anyone on the project team can virtually step into the job site and walk around freely while accessing the project's most updated documents or submittals. Quick and simple to use, Matterport Pro cameras - and compatible 360 cameras - capture spatial data and 2D photography from job sites, automatically stitching them into a complete, immersive 3D model. You can easily add it to your BIM 360 project and allow anyone to view and walk through a digital twin of the job site!

How it works

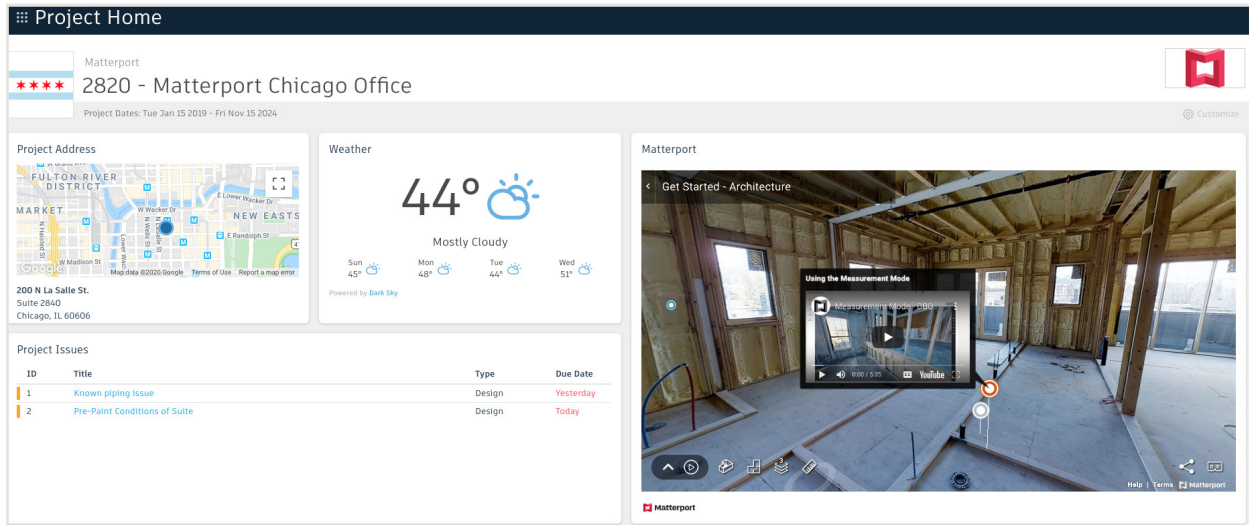
- Simply pair a compatible camera with a Matterport subscription plan and you're one click away from publishing a 3D model of your job site.

- Our powerful Capture app connects wirelessly to any Matterport compatible camera and makes it quick and easy to capture a space with just the push of a button. It seamlessly controls your camera and manages the 3D reconstruction process with industry-leading speed and accuracy.
- After you complete your scan, our Cortex AI platform creates the 3D model in Matterport Cloud within hours. It automates complex tasks including 3D reconstruction, image processing and color correction, automatic generation of the most appealing photos and videos from within the digital twin, and creates accurate measurements and dimensions of entire spaces.
- Once your 3D model is ready, simply add the URL generated by Showcase to your BIM 360 project page. Now, you can view and walk through a digital twin of the job site at any time while reviewing documents or submittals.

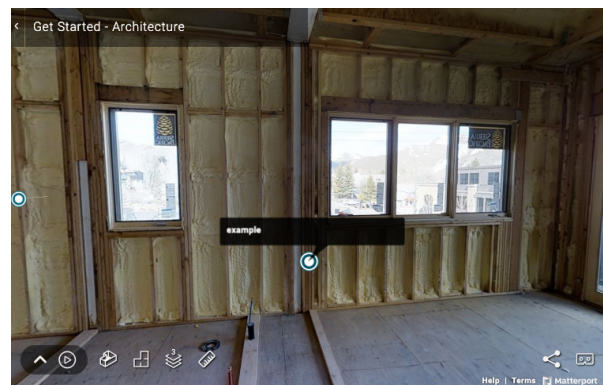
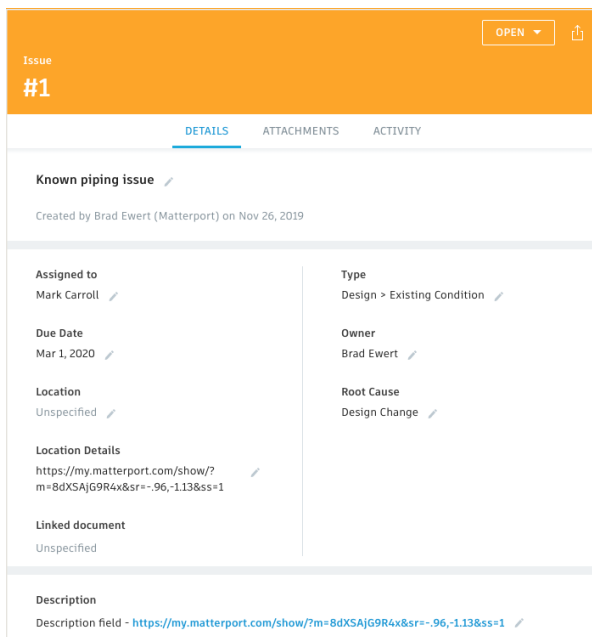
Integration Requirements

- Matterport account
- Matterport compatible camera or a Matterport 3D model generated by a scan service provider on your behalf
- BIM 360

Matterport with Autodesk BIM 360 integration



Multiple Matterport digital twins on the BIM360 dashboard



Matterport digital twin associated with RFI link

RFI Issue with Matterport link

Need more information About BIM 360 integration.

Please reach out to your Matterport support team at support@matterport.com.

For more information visit [Matterport.com](https://matterport.com) or email us at support@matterport.com