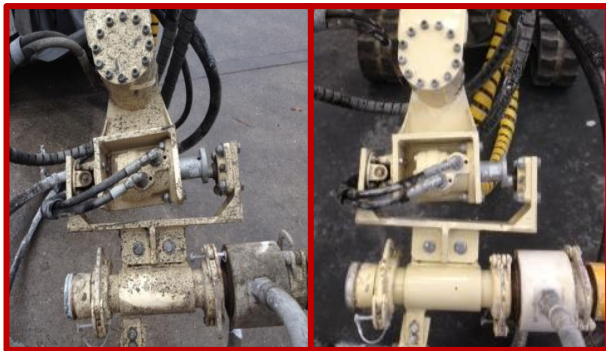


## DESCRIPTION



TamCrete CR is a non-toxic environmentally friendly concrete remover for the non-mechanical removal of hardened concrete residue found on all equipment used for batching, transporting and placing/injecting cementitious materials.

## KEY BENEFITS

- > Non-toxic rapid action product
- > Easy to apply and remove
- > Removes cement based residues, hardened concrete and mortars
- > Does not damage materials like steel, aluminum, glass, rubber or paint
- > Extends the working life of equipment

## TYPICAL APPLICATIONS

- > Concrete batching plants, truck mixers and agitators
- > Concrete and cement injection pumps
- > Spray concrete robots
- > Steel shutters
- > Grouting equipment
- > Cleaning concrete surfaces

## TECHNICAL DATA

TamCrete CR	
Form	Liquid/Gel
Colour	Blue
Density (g/cm <sup>3</sup> )	1.12
pH	3.0
All at 20°C	

All technical data stated herein is based on tests carried out under laboratory conditions.

Whilst any information and/or specification contained herein is to the best of our knowledge, true and accurate, we always recommend that a trial be carried out to confirm suitability of the product. Please note regional climatic conditions may cause a variation in the performance of the product. No warranty is given or implied in connection with any recommendations or suggestions made by us or our representatives, agents or distributors. The information in this data sheet is effective from the date shown and supersedes all previous data. Please check with your local Normet office to confirm that this is current issue.

## APPLICATION GUIDELINES

TamCrete CR should be used in the following manner:



1. Spray or brush apply TamCrete CR onto the area that requires treatment



2. Allow the product to work for approximately 1 hour



3. If required assist TamCrete CR by manually brushing/scraping/scrubbing the treated area



4. Rinse off TamCrete CR from the treated area using a jet washer or similar

For concentrated concrete build up multiple applications may be required. Small components may be submerged in TamCrete CR completely and then washed.

## PACKAGING

TamCrete CR is supplied in 25 kg plastic containers. Other packaging sizes can be agreed with your local Normet representative.

## STORAGE

TamCrete CR should be stored at room temperature, kept dry and out of direct sunlight. If these conditions are maintained and the product packaging is unopened, then a shelf life of one year can be expected.

## HEALTH & SAFETY

TamCrete CR should only be used as directed. We always recommend that the Safety Data Sheet (SDS) is carefully read prior to application of the material. Our recommendations for protective equipment should be strictly adhered to for your personal protection. The Safety Data Sheet is available upon request from your local Normet representative.