

C100 Cargo

C100 CARGO

TECHNICAL SPECIFICATION

Capacity 10 000 kg

Modular flat deck design easily extendable and can be fitted with extended side edge configuration

- Base flat deck
 - Dimensions 3580 x 2000 x 510 mm
- Wide flat deck
 - Dimensions 3720 x 2100 x 610 mm
- Base flat deck with openable side edges
 - Dimensions 3580 x 2010 x 1490 mm
 - Height of side edges 980 mm

ACCESSORIES

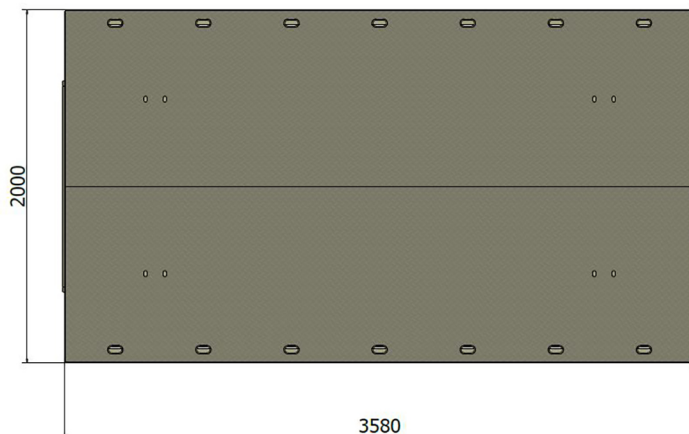
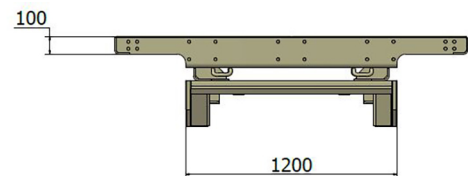
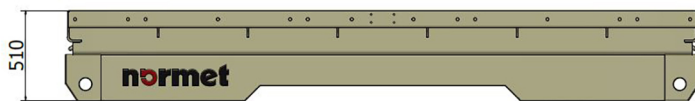
- Pipe transport rack

DIMENSIONS

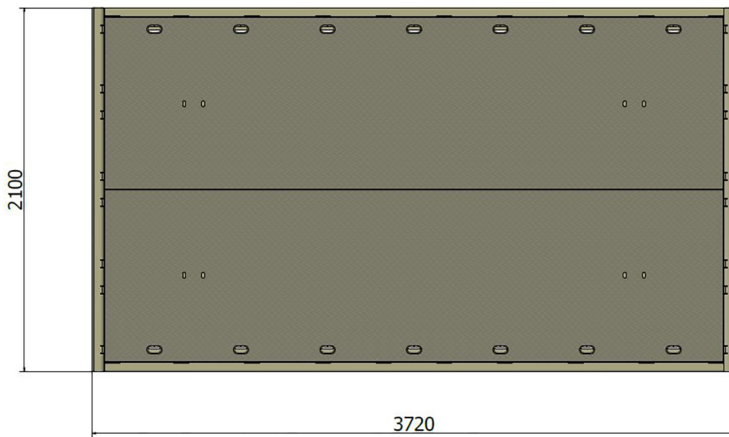
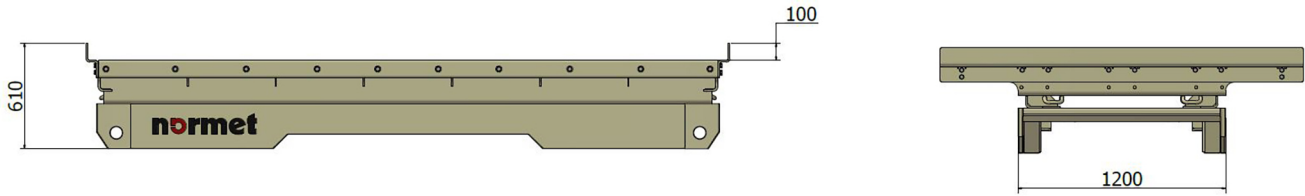
| | |
|--------------------------------------|---------|
| Height of cassette top of MF 100 | 1310 mm |
| Height with side edges top of MF 100 | 2290 mm |
| Weight | 1310 kg |
| Weight with side edges | 1850 kg |

DIMENSIONAL DRAWINGS

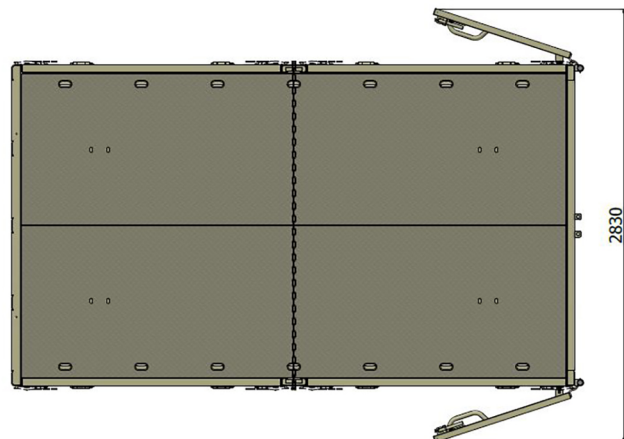
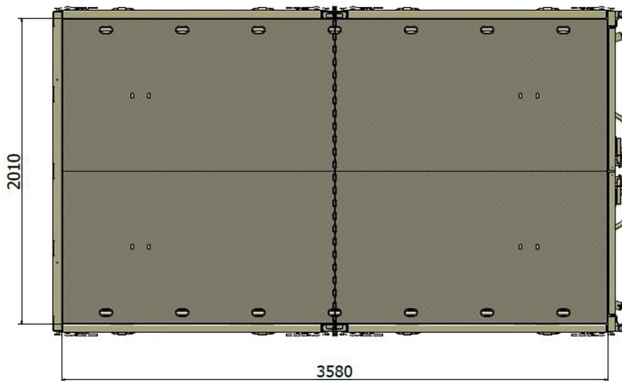
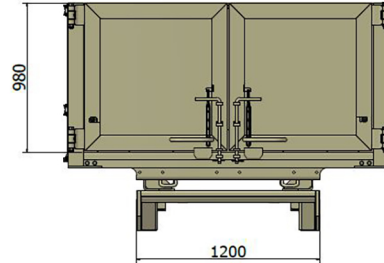
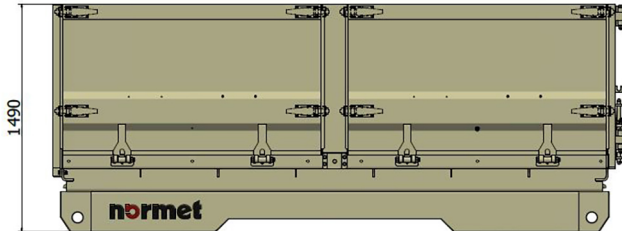
With base flat deck:



With wide flat deck:



With openable side edges:



Normet reserves the right to change this specification without further notice

Pictures may include options and additional equipment.