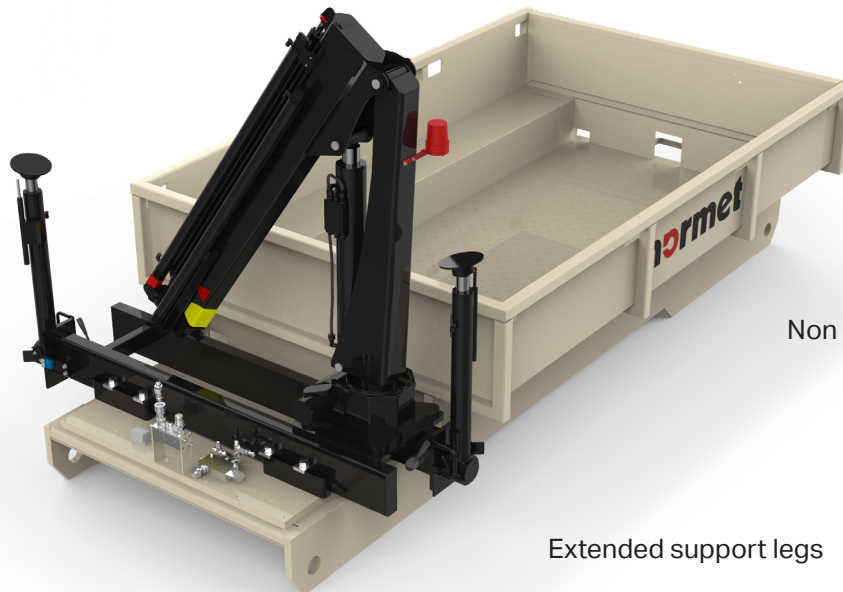


Hydraulically operated
36.5 kNm crane



Non slip nodule plate platform

Extended support legs

TECHNICAL SPECIFICATION

Capacity with SF 060 / MF 100	6 / 9 tons
Platform inner dimensions	2700 mm x 1690 mm
Wall height	400 mm
Crane 36.5 kNm:	
Maximum hydraulic outreach	3.7 m
Slewing angle	345°

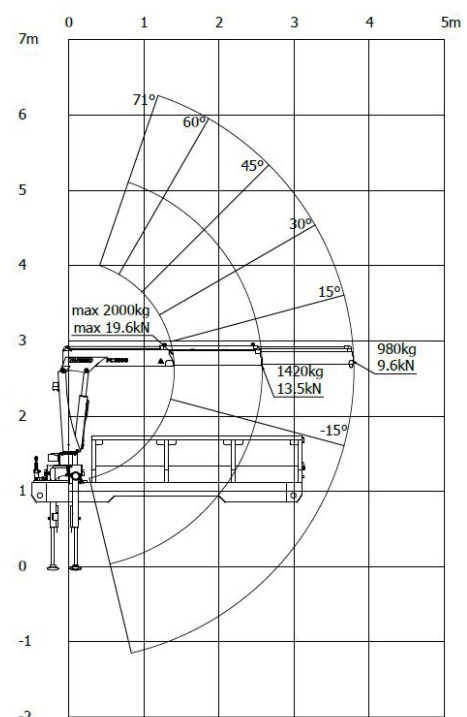
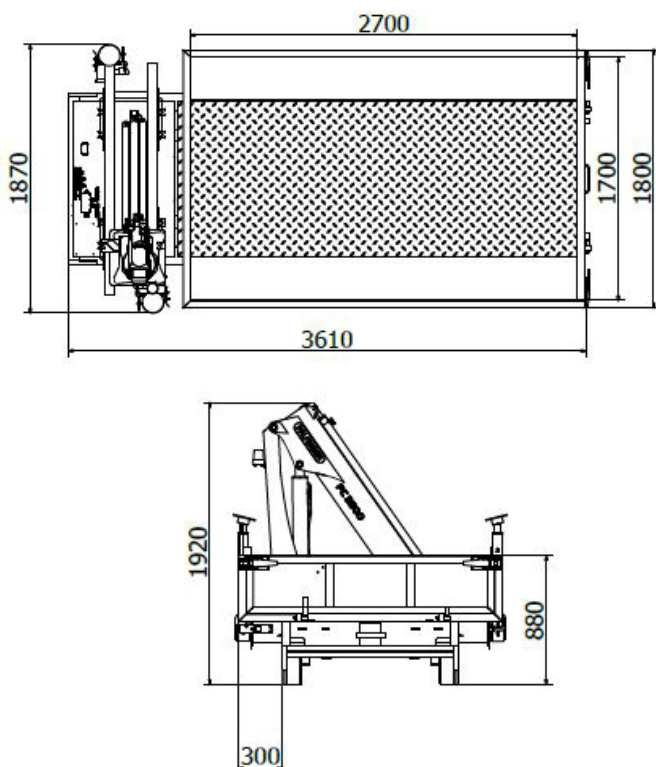
OPTIONAL EQUIPMENT

- CE approved crane 36.5 kNm
- Load monitoring system
- Maximum hydraulic outreach 3.7 m
- Slewing angle 345°

DIMENSIONS

Length	3650 mm
Width	1870 mm
Height of cassette	1920 mm
Height with Multimec SF 060 / MF 100	2610 / 2710 mm
Weight (Empty)	1600 kg

DIMENSIONAL DRAWINGS



Normet reserves the right to change this specification without further notice.