



### Technical specification

#### NBB3S BASKET BOOM

2-men basket  
Lifting capacity 500 kg  
Boom lift -18°...+ 60°  
Max. Lifting height (basket floor) 6.4 m  
Max. Vertical reach 8.4 m  
Boom slew +/- 30°  
Automatic levelling of basket  
Diesel start/stop from basket  
Battery operated emergency pump for lowering the boom

#### ENGINE

Liquid cooled turbo charged Deutz TCD 2012 L4,  
96 kW/2200 rpm, TIER 3 approved

#### EXHAUST SYSTEM

Catalytic exhaust gas purifier and muffler

#### TRANSMISSION

Dana 20 000 series power shift with pump drive group  
3 speeds forward and reverse  
4-wheel drive

#### AXLES

Planetary type  
Dana 112  
Load end axle fixed  
Engine end axle oscillation +/- 10°

#### TYRES

10.00 - 20 PR 16

#### PERFORMANCE

1st gear	max.5 km/h
2nd gear	12 km/h
3rd gear	25 km/h
Max. tractive effort	90 kN
Max speed in upward 1:7 inclined tunnel	12 km/h
Performance curve	4800031

#### BRAKES

**Service brake:** hydraulically powered two-circuit oil immersed multidisc brakes in both axles  
**Safety/Parking brake:** spring applied hydraulically released fail-safe -type brake. Brake test possibility in cabin

#### STEERING

Hydraulic frame steering  
Orbitrol type  
Frame articulation +/- 40°

#### FUEL TANK

Capacity 112 L

#### HYDRAULIC SYSTEM

Variable displacement pump system  
Pressure setting 190 bar, 95 L/min/2200 rpm  
Hydraulic oil tank capacity 115 L  
Return oil filtration 10 μm  
Indication of level, filtration and temperature

#### 24 VDC ELECTRICAL SYSTEM

Exposed components are min IP 65 standard  
Battery 2 x 115 Ah  
Alternator 100 A  
Driving halogen lights (4 + 2 pcs)  
LED work lights (2 + 2 pcs)  
LED work lights on work platform (2 pcs)  
LED parking, brake and indicator lights  
LED side lights; amber  
Side reversing halogen lights  
Rotating beacon; amber  
Wire harness (self extinguishing) with tinned wires and water tight conduits

#### DRIVER S COMPARTMENT

Open 2-man cabin FOPS/ROPS approved  
Air suspended driver's seat  
Seat with retractable lap seat belt  
Forward and side seating for the driver with two sets of pedals (brake and accelerator)  
Cabin door interlock switches with safety brake application  
MID 070 S Multifunctional Display with:

- Meters; e.g. speed, RPM, operating hours
- Status indicators; e.g. fluid levels, temperatures, pressures, alarms, faults

#### D8:E:FEE:KMKP

DXZeZfeeZkmkpXinXi NC8E&&+&CK

#### GREASING SYSTEM

Centralized grease fittings for the carrier

#### OTHER

12 kg hand held fire extinguisher  
Standard symbol labels  
Hydraulic support legs on rear frame

### Optional equipment

#### DRIVER'S CABIN

Enclosed cabin  
Air suspended T-back seat for driver and passenger

#### MACHINE CONNECTIVITY

- Data lifetime license (Include connectivity hardware)
- Analytics lifetime license (Include connectivity hardware and data lifetime license)

#### ENGINE

Liquid cooled turbo charged MB OM 904 LA,  
90 kW/2200 rpm, TIER 3 approved:

1st gear max.	5 km/h
2nd gear	10 km/h
3rd gear	25 km/h
Max. tractive effort	90 kN
Max speed in upward 1:7 inclined tunnel	12 km/h
Performance curve	4800032

#### OTHER

Warning lights: 1 unit

- Rotating beacon; red
- Rotating beacon; blue

### Additional equipment

#### SUSPENSION

Front axle suspension  
• Hydraulic front support legs

#### FOR ENCLOSED CABIN

##### CD/Radio system

##### Cabin ventilation:

- Cabin heating
- Air conditioning

#### FOR NBB BASKET BOOM

##### Safety bar

##### Hydraulic liftable safety bar

Reduces lifting capacity 60 kg

##### Safety roof with hydraulic lift:

Reduces lifting capacity 100 kg

##### Safety roof with hydraulic lift and slide:

Reduces lifting capacity 200 kg

LED working lights on safety roof (2 pcs) 43 W

Boom suspension

#### FIRE SUPPRESSION SYSTEM

Fogmaker: Manually actuated

Fogmaker: Automatically actuated

Ansul: Manually actuated

Ansul: Automatically actuated

#### GREASING SYSTEM

Automatic lubrication system for carrier and lifter: Lincoln

#### AIR COMPRESSOR

4 m<sup>3</sup> hydraulic driven compressor on front rack

#### OTHER

Fast fuel filling system: Wiggins

Oil evacuation kit with sample points

Extra hand held fire extinguisher (12 kg)

Hydraulic front support legs

Warning lights, 1 unit:

- Rotating beacon; amber
- Rotating beacon; red
- Rotating beacon; blue
- Strobe light; white

Text labels in: Fin / Por /GB / Swe / Rus / Nor / Ger / Fra / Spa / Ita

Toolbox and maintenance tools

2 wheel chocks with brackets

Reversing camera

Spare wheel with tyre

## Service

### OPERATIONAL SPARE PARTS

A complete parts package to ensure your machine runs with optimal uptime.

After commissioning of your new Normet equipment, the following maintenance & critical spares are typically recommended to support and service your machine:

- Filters, belts
- Sensors, work lights, solenoid coils and fuses
- Sliding parts, bearings, cylinders, seals & pins
- Hoses including concrete, charging & hydraulic
- Nozzles & tips
- TamCrete EasyClean - nontoxic protective agent
- Pistons and seal kits
- Guide rollers and bushes

Note: The usage and consumption of parts may vary depending on the operating environment.

### EXTENDED WARRANTY

Standard Normet equipment warranty is 2000 operation hours or 12 months (whichever is reached first). Extended warranty for your Normet equipment can be provided with service agreement- conditions apply.

### TRAINING AND EXPERTISE SERVICES

Need training before your machine goes into service or any stage during its working life? The Normet Academy and our highly skilled technicians can provide all your expert training needs including...

#### Product training:

Operation and Maintenance  
Automation -NorSmart/Nordoser  
Electric, hydraulic and mechanical fundamentals  
Trouble-shooting and fault finding

#### Process & operator improvement audit for:

Concrete spraying - practical or simulated  
Charging  
Scaling - practical or simulated

#### Audit services to improve:

Equipment performance, machine availability, safety & quality.

### SERVICE AGREEMENTS

Parts supply  
Periodic fleet inspection  
Preventative maintenance  
Maintenance Supervision  
Fleet availability

### ELECTRONIC MANUALS

LinkOne electronic spare parts and instruction manuals

### EQUIPMENT - COMMISSIONING & START UP SERVICES

#### Operator Training

- Class room training
- Practical training

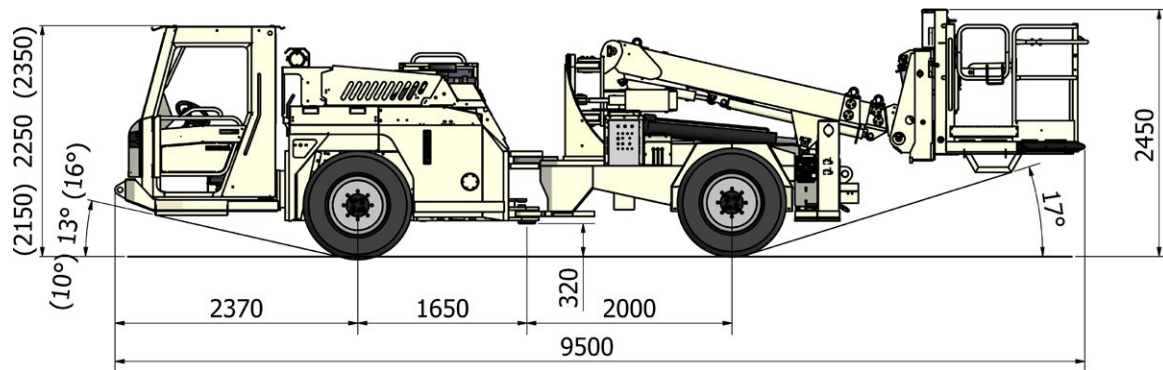
#### Maintenance & Repair Training

- Class room training
- Practical training

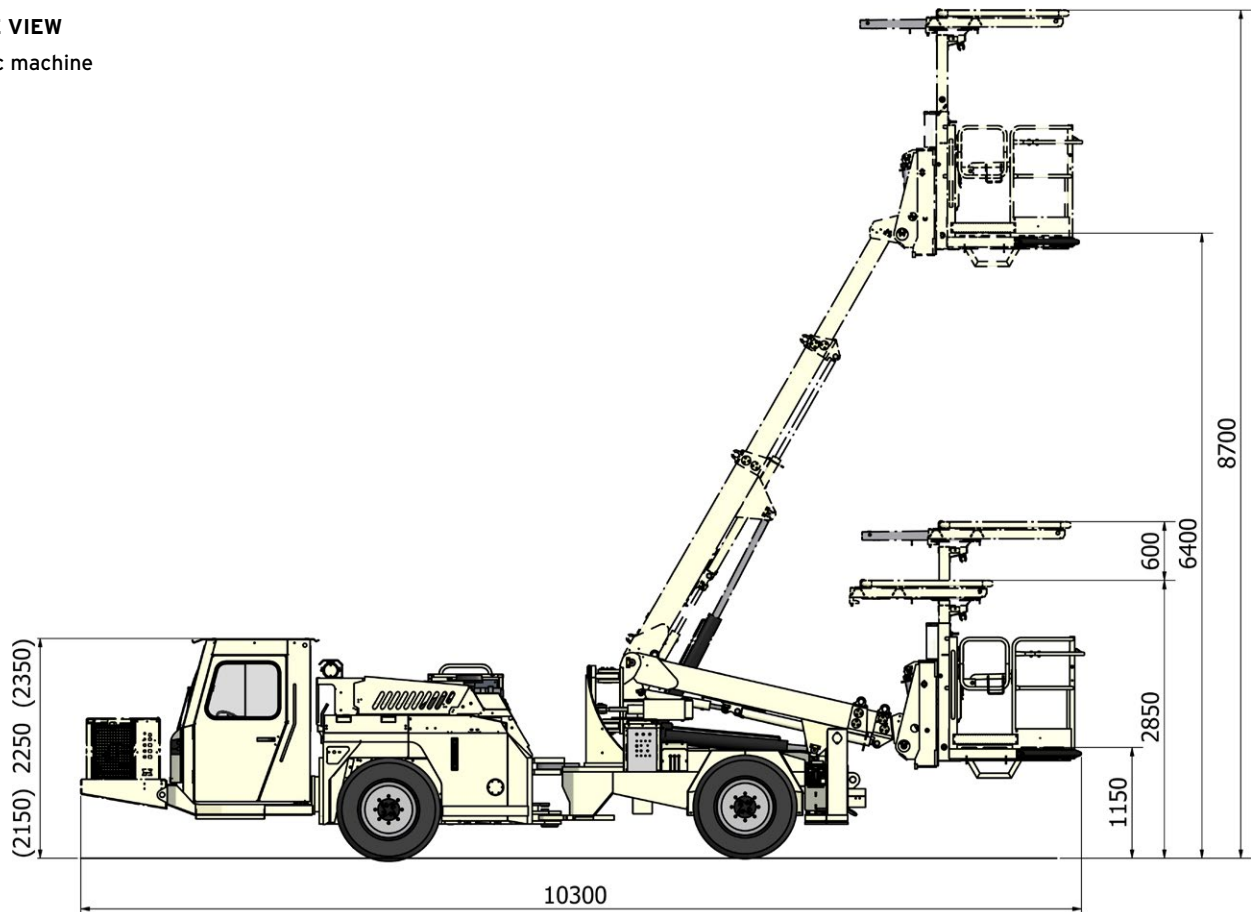
#### Commissioning

- Receiving inspection

### Dimensions



### SIDE VIEW Basic machine



### SIDE VIEW & BOOM REACH

Machine with options and additional equipment

#### DIMENSIONS

Length	9500 mm
Width	1800 mm
Height	2450 mm
Wheel base	3650 mm
Track	1500 mm
Ground clearance as shown	320 mm

#### TURNING RADIUS

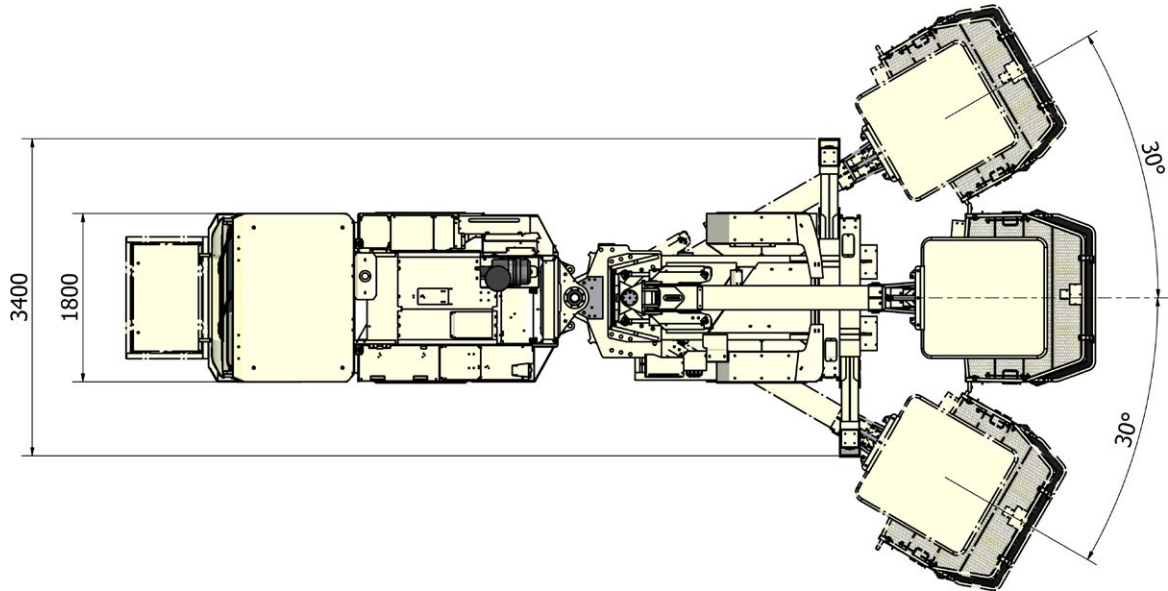
Outer	6700 mm
Inner	4000 mm

#### WEIGHT

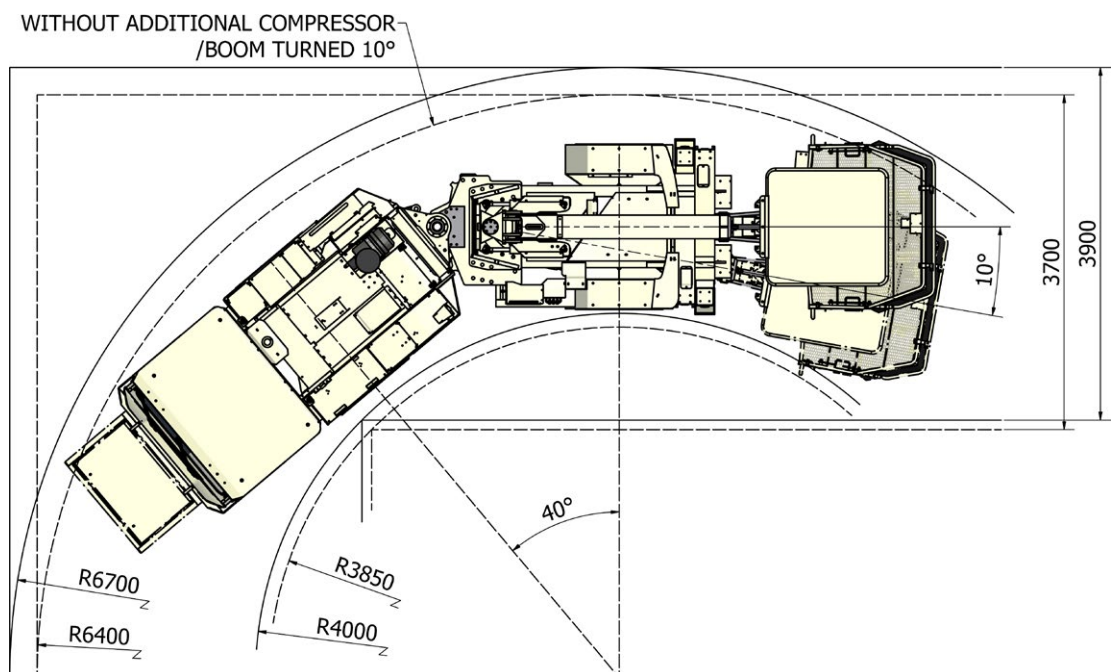
Operating	11000 kg
-----------	----------

Normet reserves the right to change this specification without further notice.

### Dimensions



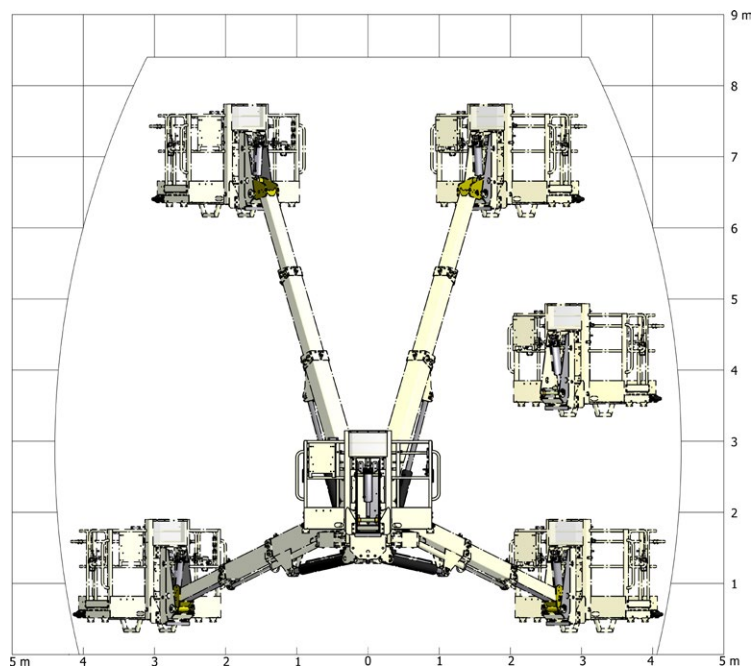
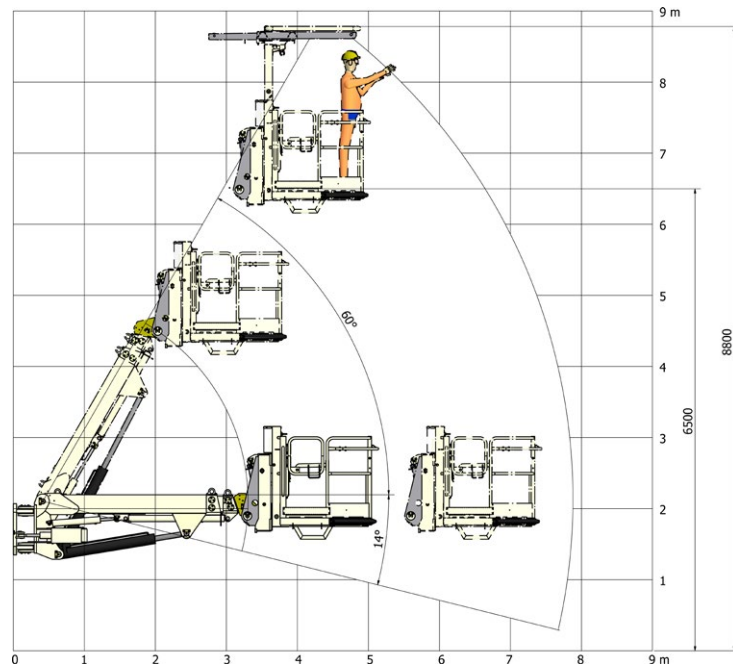
### TOP VIEW



### TURNING RADIUS

Normet reserves the right to change this specification without further notice.

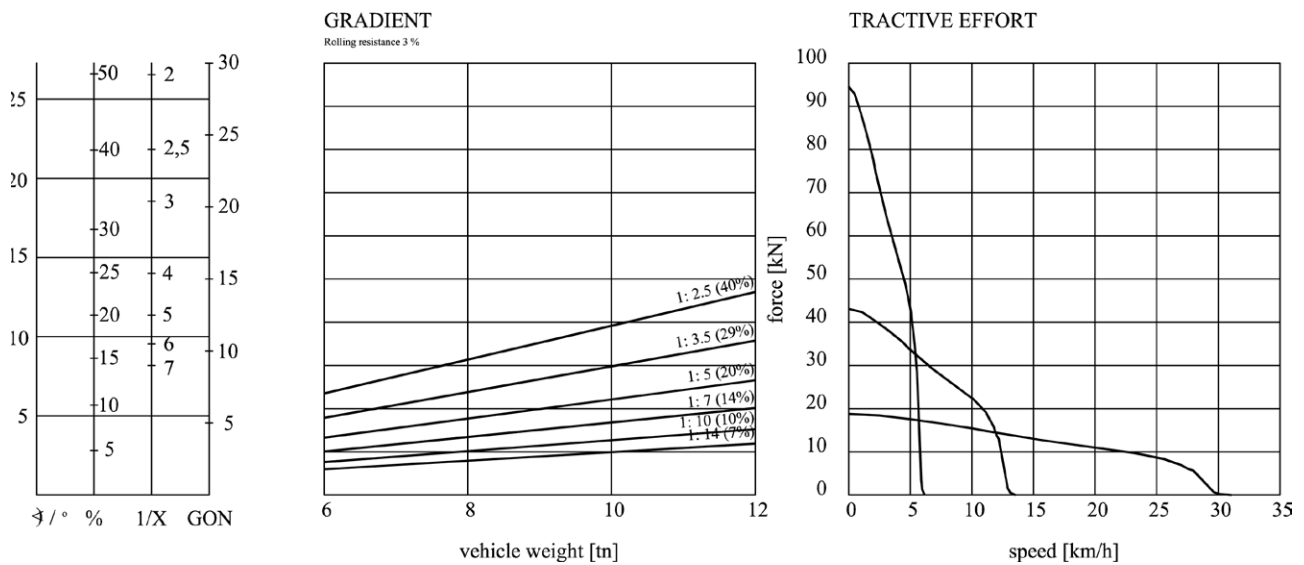
### Dimensions



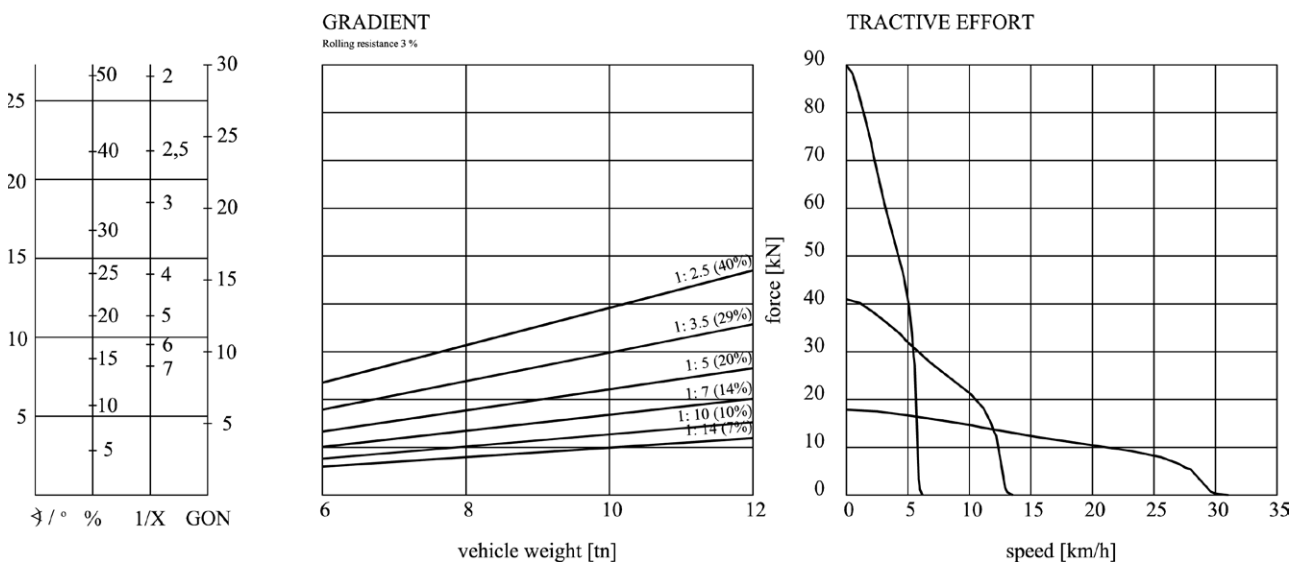
### BOOM REACH

Normet reserves the right to change this specification without further notice.

### Tractive efforts



**DEUTZ TCD 2012 L4 96 kW**  
Performance curve 4800031



**MERCEDES-BENZ OM 904 LA 90 kW**  
Performance curve 4800032

Normet reserves the right to change this specification without further notice.