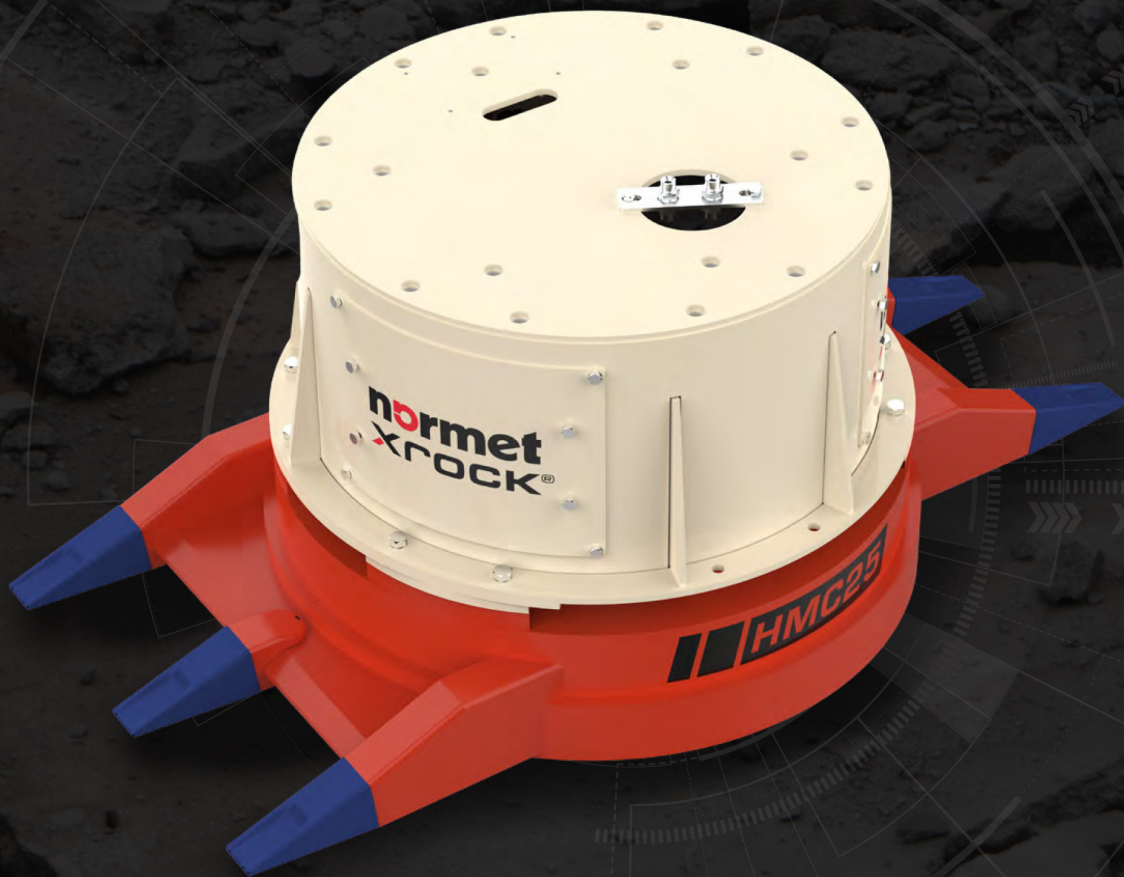


# HMC25 MAGNET

Controlled power,  
maximum results.



Normet Xrock HMC25 magnet is a powerful and versatile hydraulic magnet designed for demolition, breaking and metal sorting tasks. Combined with advanced quick coupling and practical, durable rock claws, the HMC25 makes metal separation easy, fast, and more controlled than ever before.

**normet**  
**XROCK®**



Easy to install and smooth to operate, the Normet Xrock HMC25 magnet is a smart addition that streamlines your rockflow and elevates demolition and material handling to the next level.

#### TECHNICAL SPECIFICATIONS

Integrated 6 kW hydraulic generator

Oil flow: 32 l/min, 160 bar

Weight: 900 kg (+40 kg with claws)

Theoretical lifting force: 10,500 kg with solid steel plates

Quick demagnetization function

#### XQUICK® quick coupling

enables safe and easy operation – change between tools in just seconds.

#### Quick coupling

allows unmatched control as it keeps the magnet steady for smooth, controlled handling.

#### Integrated 6 kW hydraulic generator

ensures smooth and independent operation.

#### Strong lift capacity

and a durable frame make it ideal for demanding environments.

#### Fast demagnetization

speeds up cycles and increases productivity.

#### Durable rock claws

make picking metal out of debris effortless and fast.

