

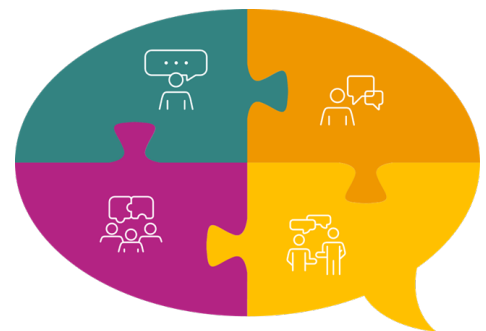
SEND Board Meeting

Date: 11 November 2025

This briefing summarises key updates and decisions from the November SEND (Special Educational Needs and Disabilities) Board meeting. The agenda focused on the Preparing for Adulthood Strategy consultation, SEND inspection preparedness, health service updates, performance data, and the transformation of neurodevelopmental pathways.

Preparing for Adulthood Strategy Consultation

The Board received an update on the upcoming consultation for Stockport's Preparing for Adulthood (PfA) Strategy. The consultation aims to gather feedback from residents, family carers, young people, and professionals to help finalise the strategy and co-produce the action plan. Engagement activities will run from 19 November to 31 January, including online and face-to-face sessions with schools, colleges, and community groups. Board members agreed to coordinate efforts to avoid consultation fatigue and ensure broad participation.



Next steps: Board members will share the consultation within their networks once launched to maximise reach and feedback.

For further information contact: Amardeep Grewal amardeep.grewal@stockport.gov.uk

SEND Inspection Preparedness

The Board reviewed Stockport's readiness for the upcoming SEND inspection. Key areas included:



- **Self-Evaluation Framework (SEF):** Provides an honest overview of partnership effectiveness, covering 11 inspection criteria and highlighting areas for improvement such as autism, attendance, and co-production.
- **Annex A Documentation:** The library contains over 600 documents and must be kept current for inspection. All partners should be prepared to provide case files and participate in audits.

- **Case Selection:** Inspectors will select 6 cases at random to track to ensure coverage of key needs and settings. They will speak to parents, carers, children and young people about their experiences and practitioners about their work to support and improve outcomes. Quality assurance of EHCPs (Education Health and Care Plans) is ongoing, with regular audits to improve clarity and relevance.

Weekly communications and briefings are being shared to ensure all staff are prepared.

For further information contact: Geraldine Gerrard geraldine.gerrard@stockport.gov.uk

Health Services Update

Updates were presented on SEND health governance, performance data, and recovery plans for paediatric audiology, therapies, and CAMHS (Children and Adolescent Mental Health Services). Highlights included:

- **Therapies Transformation:** Speech and language therapy has been improved using the Balanced System, reducing waiting times and embedding a new outcomes framework.
- **Paediatric Audiology:** Health Harmony has been commissioned to address backlogs, with all patients expected to have an initial appointment by December.
- **CAMHS and Neurodevelopmental Pathways:** Recovery plans focus on recruitment, future changes to the CAHMS specification, implementation of the early help model and Neurodevelopmental Hub. Concerns remain about long waits for assessments and the details of the implementation of the new neurodevelopmental model. (see below)

Efforts are ongoing to improve data integration and reporting, especially for early years and adult pathways.

For further information please contact: Jemma Billing j.billing1@nhs.net

Performance Data and Attainment

The SEND scorecard shows mixed outcomes. While there is a decline in key stage two attainment for EHCP and SEND support cohorts, Stockport continues to see positive trends in other areas, including a reduction in NEET rates and high levels of settled accommodation for young adults with learning disabilities. These improvements reflect ongoing efforts to support better life outcomes alongside academic progress.

A deep dive on attendance and exclusions will be shared at a future meeting.

For further information contact: Christopher Harland christopher.harland1@stockport.gov.uk

Neurodevelopmental Pathway Transformation

The Board discussed the implementation of the new needs-led neurodevelopmental pathway, which aims to provide support based on individual needs rather than waiting for a formal diagnosis. This approach is designed to improve early access to help and reduce pressure on diagnostic services.

While there are challenges around waiting list management and data sharing currently, partners welcomed the positive shift towards a more inclusive, proactive model. The Board noted the complexity of the implementation, and all parts of the system need to come together and play a part in the change. Actions were agreed to manage risks and ensure clear communication with families and professionals as we move forward to the new model.

