

Corporate Leadership and Senior Leadership

Chief Executive

Caroline Simpson

Caroline.Simpson@stockport.gov.uk

To see more information on each of the area's our Corporate Leaders are responsible for, please click on their name.

Deputy Chief Executive
Corporate and Support Services

Michael Cullen

Michael.cullen@stockport.gov.uk

Executive Director People and Integration

Christine McLoughlin OBE

Chris.mcloughlin@stockport.gov.uk

Director of Place
Management

Mark Glynn

Mark.glynn@stockport.gov.uk

Director of Development and
Regeneration and MDC Chief
Executive

Paul Richards

Paul.richards@stockport.gov.uk

Director of Public Health

Jilla Burgess Allen

Jilla.burgess-allen@stockport.gov.uk

Director of Strategy

Kathryn Rees

Kathryn.rees@stockport.gov.uk

Director of Adult Social
Services

Sarah Dillon

Sarah.dillon@stockport.gov.uk

Deputy Place Lead for
Health and Care

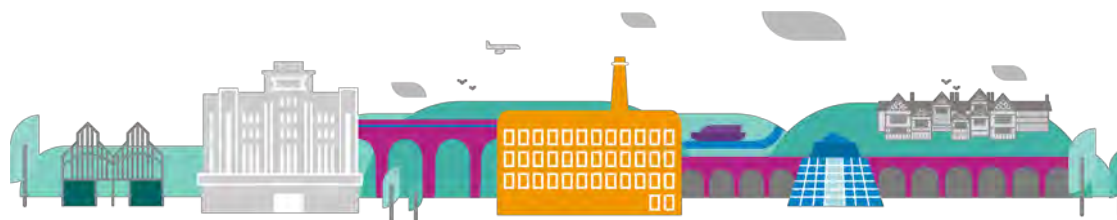
Philippa Johnson

philippajohnson@nhs.net

Director for Education Work
and Skills (Interim DCS)

Tim Bowman

Tim.bowman@stockport.gov.uk



Adult Social Care and Health – Adult Social Care

Corporate Director People and
Integration
Christine McLoughlin OBE

Director of Adult Social Care
Sarah Dillon

Commissioning
Assistant Director of Adult
Social Care Commissioning
Vincent Fraga

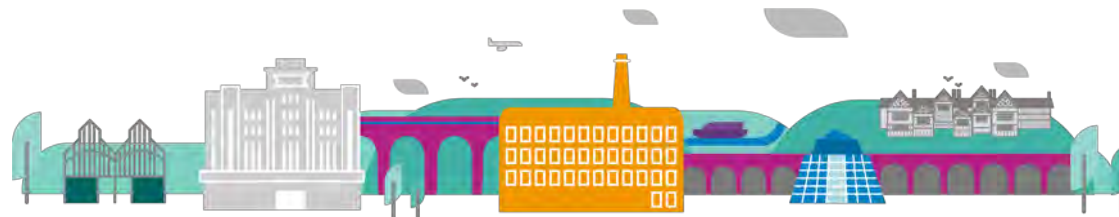
Enablement and Recovery
Head of Service
Karen Povall

Practice Quality and
Safeguarding
Head of Service
David Eckersley

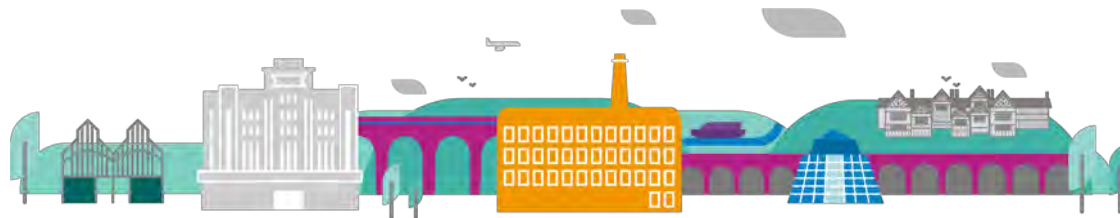
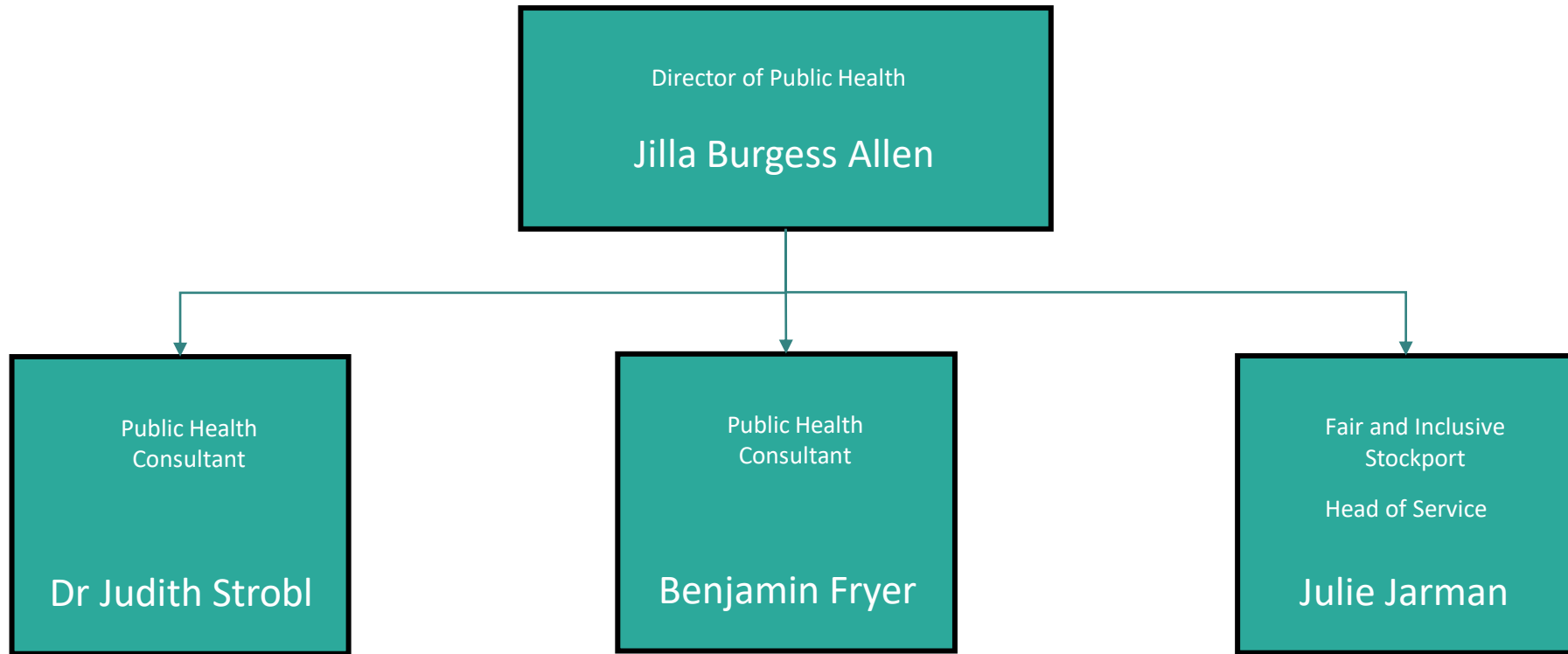
Specialist Services – Mental
Health and Community
Learning Disability
Head of Service
Hayley Hilgart

Support and Care
Management - ARCH
Head of Service
Anne Barlow

Infrastructure
Head of Service
Emma Bowe



Public Health



Children's Services

Executive Director People and Integration
Christine McLoughlin OBE

Director of Education Services
Stockport Family
Interim Director Children's
Services
Tim Bowman

Heidi Shaw
Director Stockport Family
Help and Integration

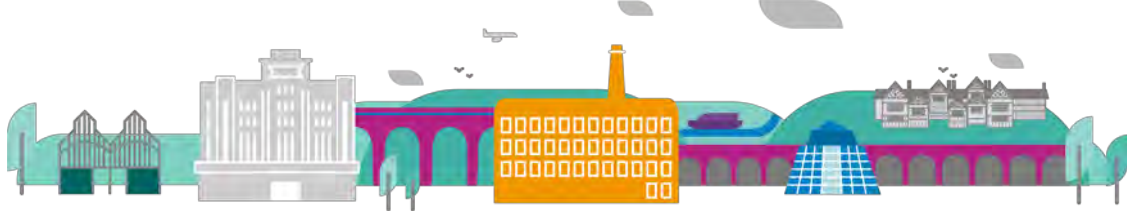
Rebecca Key
Director Stockport Family
Children's Social Care

Principal Lead Health (Stockport Family and Foundation Trust) – Emma McDonough
Head of Family Help – Katie Cooper
Head of Early Years and Neighbourhoods – LJ Woodward
Children's Transformation Lead – Carolyn Anderson

Principal Lead Social Care and Commissioning – Jeanette Warburton
Head of Social Work and Practice Improvement – Victoria Sattler
Head of Adoption Counts – Gail Spray

Head of School Effectiveness – Lynn Perry
Strategic Lead for Send and Inclusion – Bev Milway
Head of Educational Psychology and Inclusion – Dr Martin Powell
Acting Head of Virtual School – Amanda Aylward

Head of Safeguarding and Learning – Nuala O' Rourke
Head of Children's Sector Led Improvement – Paul Bunker
Head of Ethnic Diversity – Nicole Hand



Services to Place – Development and Regeneration

Director of Development and Regeneration and MDC Chief Executive
Paul Richards

Estate and Asset Management
Assistant Director Estate and Asset Management
James Kington

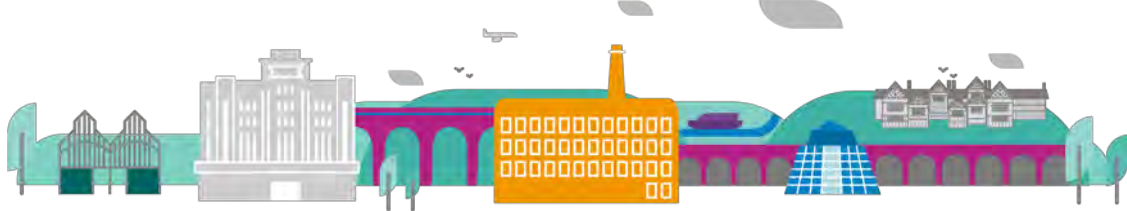
Capital Design and Technical Services
Head of Service
Luke Green

Culture and Leisure
Head of Service
Peter Ashworth

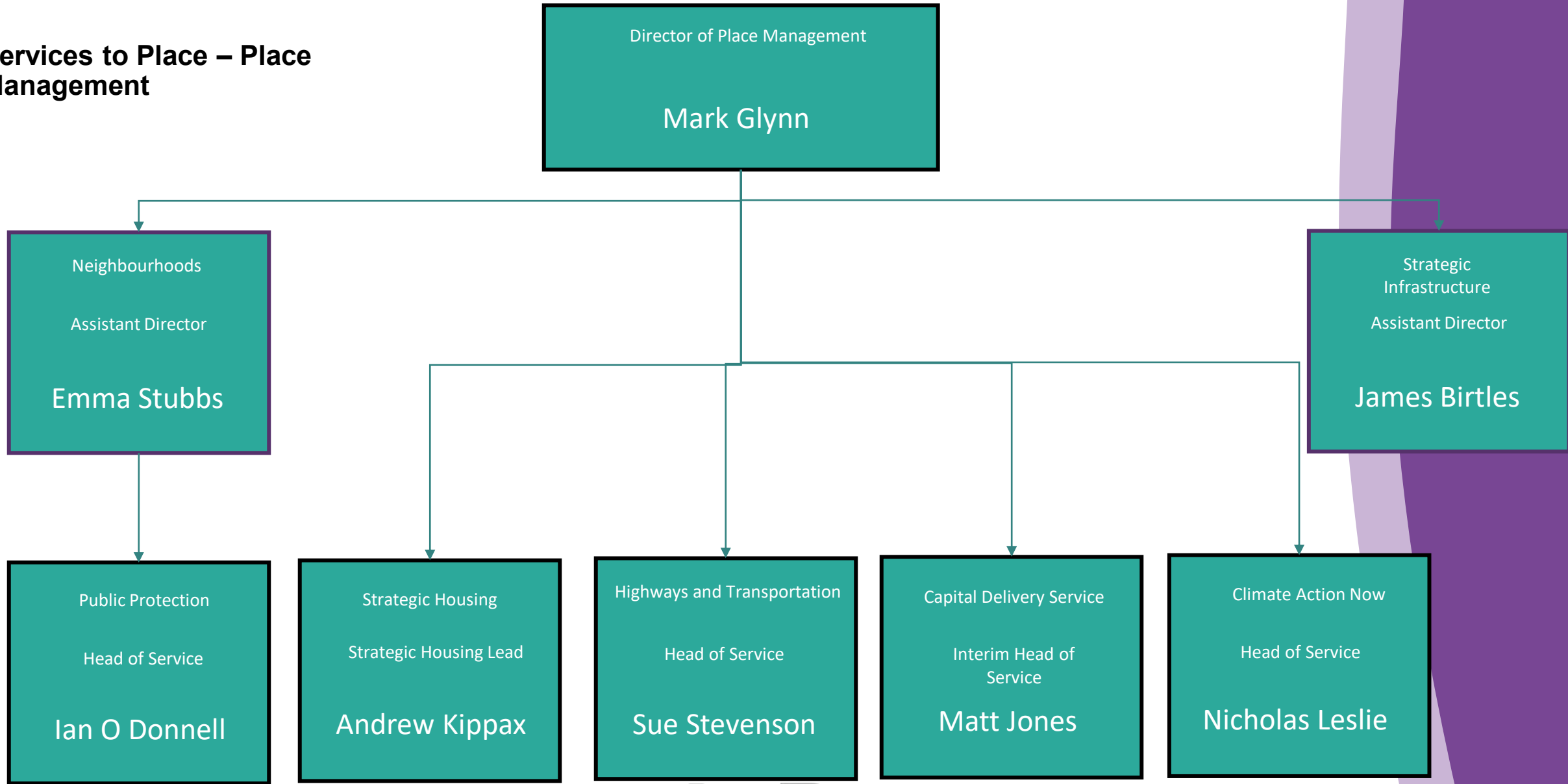
Economy Work and Skills
Head of Service
Richard Mortimer

Strategy and Operations
Head of Service
Frances Jones

Development and Regeneration
Head of Service
Robert Goulsbra



Services to Place – Place Management



Corporate and Support Services – Citizen Focus

Deputy Chief Executive
Michael Cullen

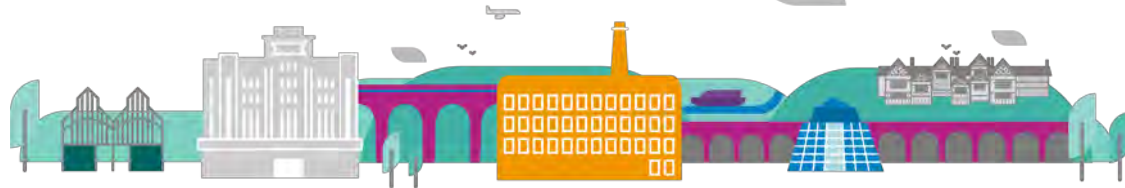
Director of Strategy
Kathryn Rees

Assistant Director
Communications
Andrea Lingley

Technology and Communications
Head of Service
Adrian Davies

Citizen Services
Head of Service
Emma Handby
Interim Reporting Arrangements –
Reporting to Mark Glynn

Business Support
Operational
Head of Service
Claire Grindlay
Interim Reporting Arrangements –
Reporting to Vicki Bates



**Corporate and Support Services
– Strategy and Commissioning**

Deputy Chief Executive
Michael Cullen

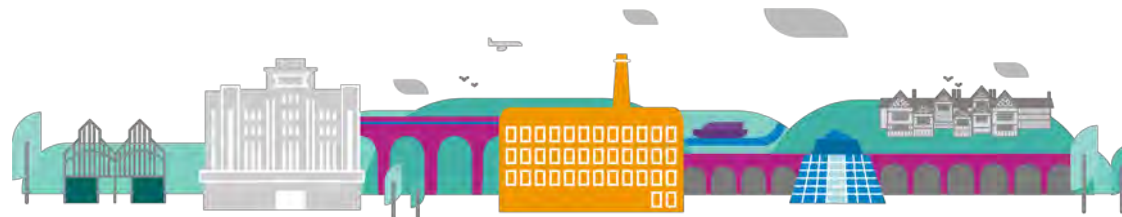
Director of Strategy
Kathryn Rees

Business Support
Contracts and
Commissioning
Head of Service
Geraldine Gerrard

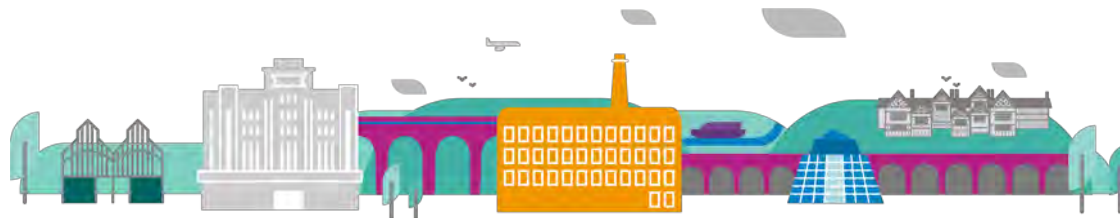
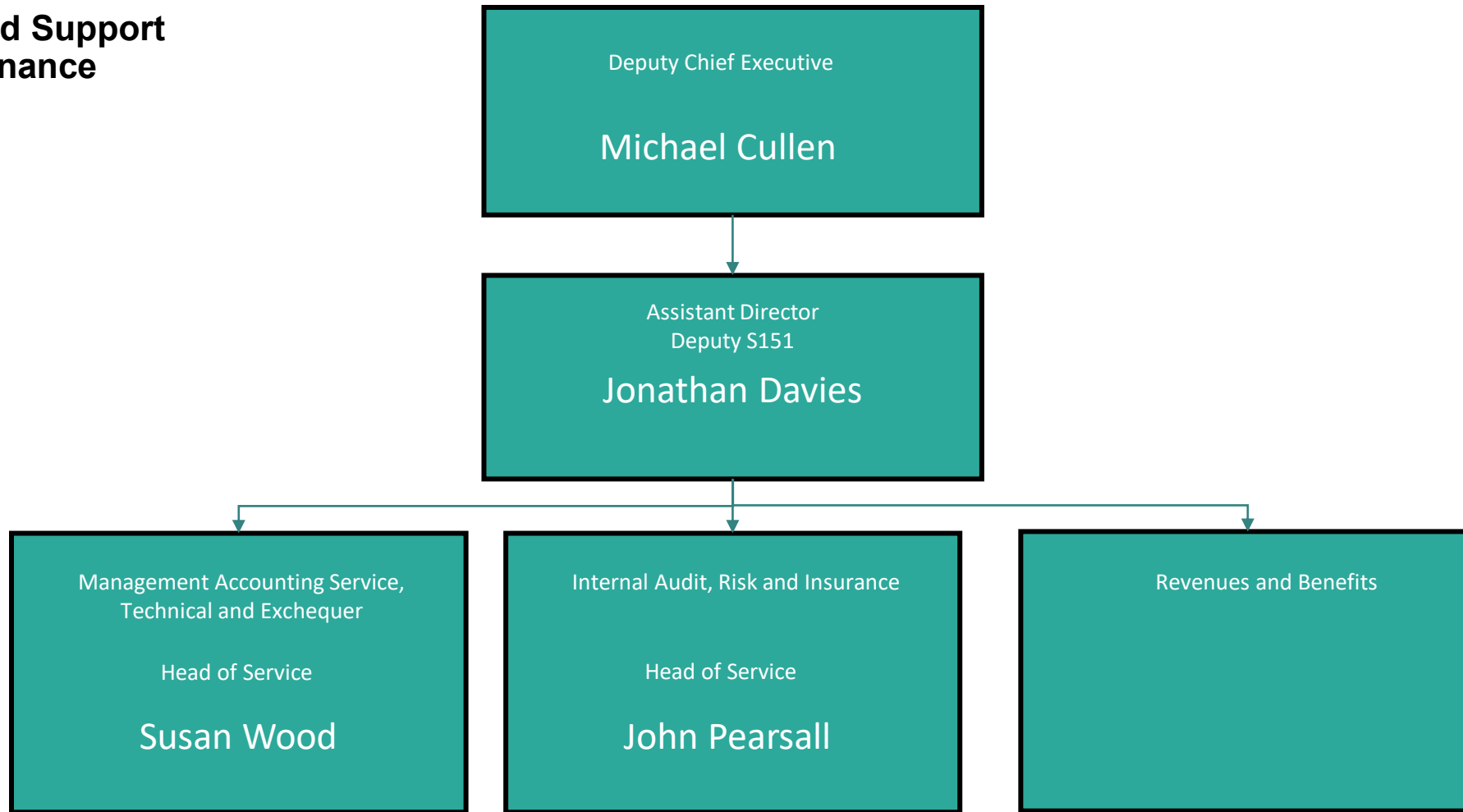
Data
Head of Service
Craig Hughes

People and
Organisational
Development
Head of Service
Jennie Neill

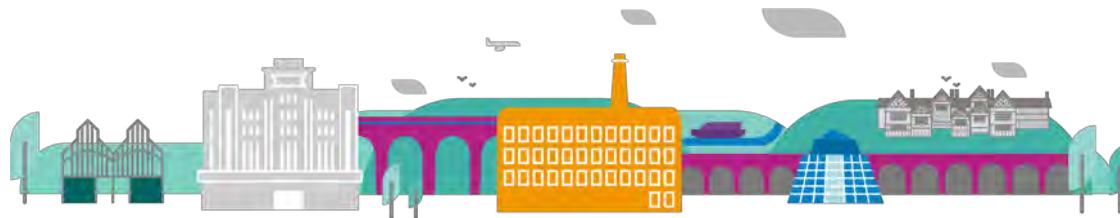
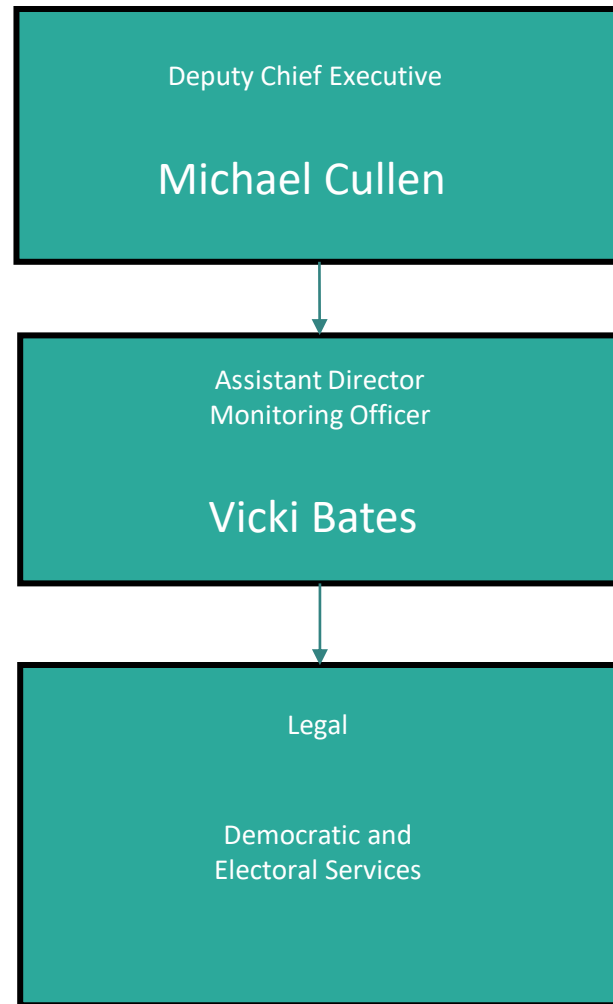
Strategy and Design
Head of Service
Holly Rae



Corporate and Support Services – Finance



Corporate and Support Services – Legal and Democratic Services



Corporate and Support Services – Planning

