

Marple Neighbourhood Plan Referendum Information Statement

A Referendum relating to the Marple Neighbourhood Plan will be held on Thursday 21st March 2024.

The question which will be asked in the Referendum is:

“Do you want Stockport Metropolitan Borough Council to use the Neighbourhood Plan for Marple to help it decide planning applications in the neighbourhood area?”

The Referendum area is identified on the map which is included with this Information Statement. The Referendum area is identical to the area which has been designated as the Marple Neighbourhood Area.

Who is entitled to vote?

A person is entitled to vote in the Referendum if on Thursday 21st March 2024:

- The person is entitled to vote in a local government election in the Referendum area (is registered to vote and is 18 years of age or over on Thursday 21st March 2024); and
- The person’s qualifying address for the election is in the Referendum area. A person’s qualifying address is, in relation to a person registered in the register of electors, the address in respect of which the person is entitled to be registered.

You must be registered to vote by Tuesday 5th March 2024 in order to vote in the referendum.

You can check if you are registered to vote by calling 0161 217 6026. If you are not on the electoral register, you will need to go online to <https://www.gov.uk/register-to-vote> and complete an online application form.

How to vote

There are three ways of voting:

In person: on Thursday 21st March 2024

- Most people vote in person at their local polling station. It is easy and a member of staff will always help if you are not sure what to do.
- You will receive a poll card telling you where your polling station is.
- Polling stations are open from 7am to 10pm.
- **If you do not receive your poll card, you can contact Electoral Services on 0161 217 6026 or at elections.office@stockport.gov.uk to find out where your polling station is.**
- You must have a valid form of photo ID with you in order to vote. You can find a list of the accepted forms of ID on the back of your poll card or on our website <https://www.stockport.gov.uk/id-to-vote-in-person>. You can apply for free electoral photo ID if you do not have any other kind of valid ID. Alternatively you can vote by post or proxy instead (see below).

By post:

- To apply to vote by post, you can complete an application online <https://www.gov.uk/apply-postal-vote> or fill in an application form and send it to Electoral Services, Room 132, Town Hall, Edward Street, Stockport, SK1 3XE by **5pm on Wednesday 6th March 2024.**
- Ballot papers can be sent overseas, but you need to think about whether you will have time to receive and return your ballot papers by **10pm on Thursday 21st March 2024.**
- Postal votes will be sent out first class around Monday 11th March 2024. If you haven't received your postal vote by Friday 15th March 2024, you can get a replacement up to **5pm on Thursday 21st March 2024.**

By proxy:

- If you can't go to the polling station and don't wish to vote by post, you may be able to vote by proxy. This means allowing somebody you trust to vote on your behalf at your polling station.
- Proxy vote applications can be completed online <https://www.gov.uk/apply-proxy-vote?step-by-step-nav=ff81c31c-3282-49df-85a4-013887130110> or you can request an application form via post from Electoral Services on 0161 217 6026 or elections.office@stockport.gov.uk.
- Completed applications must be returned to Electoral Services, Room 132, Town Hall, Edward Street, Stockport, SK1 3XE by **5pm on Wednesday 13th March 2024.**

Referendum expenses

The Referendum expenses limit that will apply in relation to the Referendum is £2972.83

The number of persons entitled to vote in the Referendum by reference to which that limit has been calculated is 10,353.

The Referendum will be conducted in accordance with procedures which are similar to those used at local government elections.

Specified documents

The specified documents are:

- The Marple Neighbourhood Development Plan;
- The Appendices of the Plan;
- Report of the independent examiner;
- Summary of the representations submitted to the independent examiner;
- Regulation 18 Decision Statement;
- Statement by the local planning authority that the draft plan meets the basic conditions and complies with the relevant legislation;
- This information statement; and
- A statement that sets out general information about town and country planning including neighbourhood planning and the referendum.

A copy of the specified documents, that is those documents listed above, may be inspected at:
<https://www.stockport.gov.uk/marple/referendum-plan>.

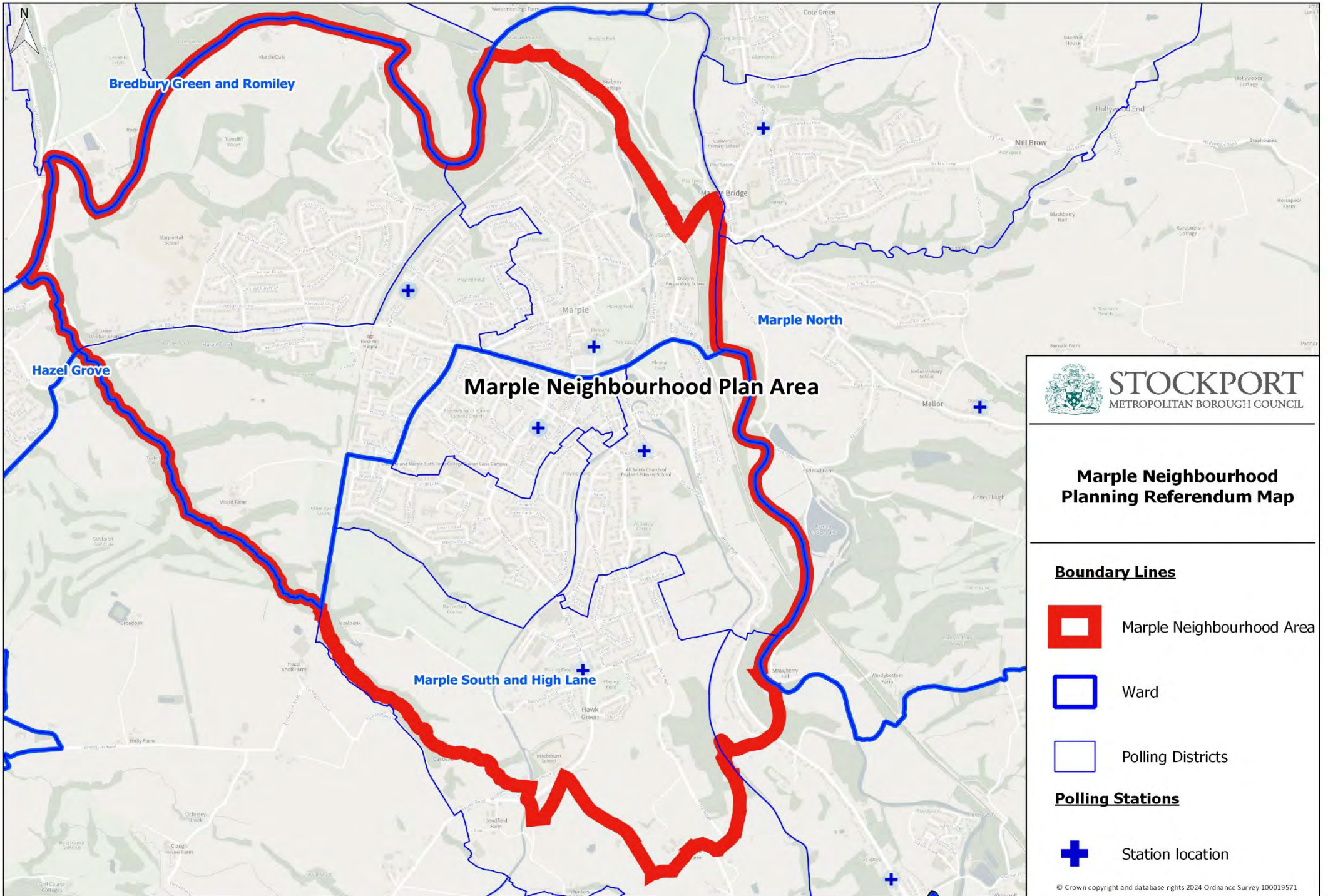
Paper copies will be available to view during staffed hours at:

High Lane Library, Buxton Road, High Lane, Stockport, SK6 8DX
Hazel Grove Library, Beech Avenue, Hazel Grove, Stockport, SK7 4QP
Marple Library, Memorial Park, Marple, Stockport, SK6 6BA
Stopford House Reception, Piccadilly, Stockport, SK1 3XE





Caroline Simpson
Counting Officer
Stockport Metropolitan Borough Council
Town Hall
Edward Street
Stockport
SK1 3XE

Dated: Monday 12 February 2024

The Referendum Area: Marple Neighbourhood Area



Marple Neighbourhood Planning Referendum Map

- Boundary Lines**
-  Marple Neighbourhood Area
 -  Ward
 -  Polling Districts
- Polling Stations**
-  Station location