

Your Council Tax explained 2024/25

Your Council Tax money goes towards local services such as support for the elderly and vulnerable, for young people and schools, parks maintenance, refuse disposal, street cleaning and many more local services.

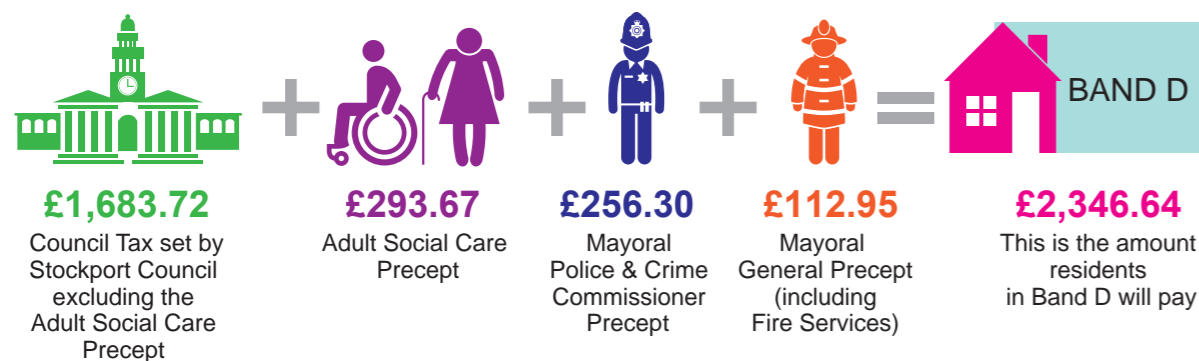
The amount charged depends on the Government's banding of your property which is determined by the property's value.

1 Yearly Council Tax charge for Stockport

BAND	Charge
A	£1,564.42
B	£1,825.16
C	£2,085.90
D	£2,346.64
E	£2,868.11
F	£3,389.59
G	£3,911.06
H	£4,693.28



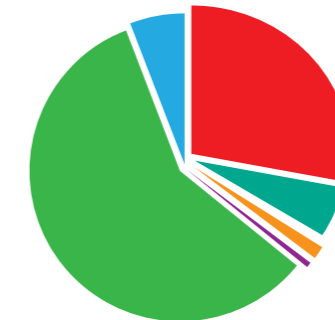
2 The charge for Council Tax is calculated as follows



3 Stockport Council resources include your Council Tax

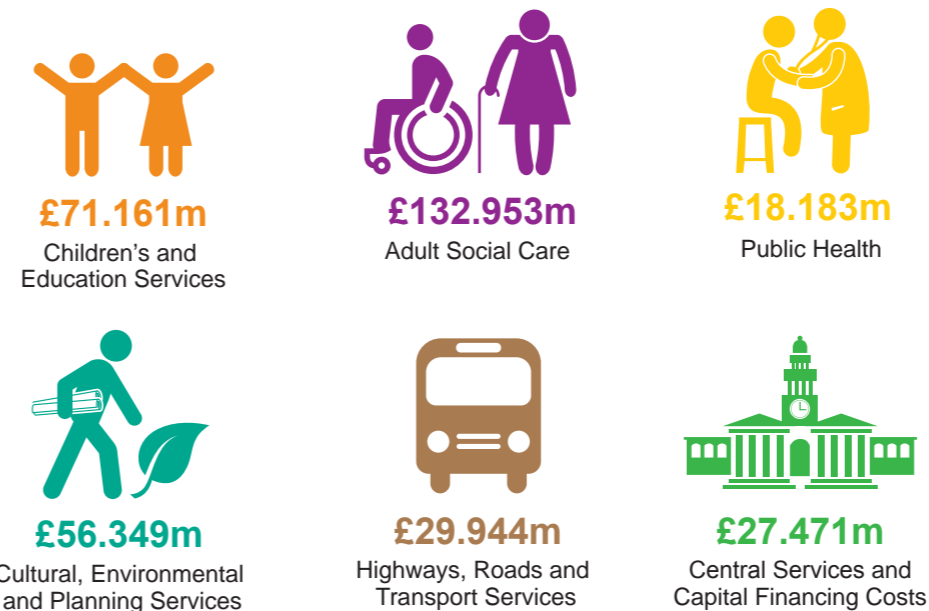


49.3% £165.672m Council Tax



- 27.9%** £93.664m Business Rates
- 8.6%** £28.896m Adults Social Care Precept
- 11%** £37.050m Government Grants
- 2.3%** £7.883m Collection Fund Surplus
- 0.9%** £2.896m Contributions from Reserves

4 The resources are then spent on



UPTO 25% OFF

Upto 25% off your Council Tax if you qualify for a single person discount. For the full range of benefits and grants visit www.stockport.gov.uk/counciltax

View your Council Tax information

You can now view your personal Council Tax information online through a secure password protected account. Your online account allows you to view your Council Tax bill, dates your payments become due, as well as details of any reductions. Free internet access is available at all Council Libraries. To set up your account visit

www.stockport.gov.uk/view-your-council-tax-information

For more information about how your Council Tax is calculated and spent visit

www.stockport.gov.uk/what-your-council-tax-pays-for

5 Adult Social Care Precept

The cost of adult social care is increasing due to inflationary costs and increasing demand on services which support our elderly and vulnerable residents. As a provider of adult social care services Stockport Council is allowed, by Central Government, to include an Adult Social Care Precept on Council Tax Bills. For 2024/25 this Precept will increase by 2.0% raising additional income to support the funding of the increasing costs of providing adult social care services.