

CLIMATE ACTION NOW (CAN) ANNUAL REPORT 23/24

Report of the Director of Place Management

1. INTRODUCTION AND PURPOSE OF REPORT

- 1.1 Attached is the 4th CAN annual report produced by the council, which is usually published in the summer hence requiring approval through the scrutiny process. It outlines progress made by the council in implementing the Climate Action Now (CAN) programme over the last financial year 2023-24. It focuses on projects completed or underway aligned to each of the core CAN programme workstreams: Council CAN, Renewable Energy, Low Carbon Buildings, Sustainable Transport, Natural Environment and Climate Friendly Borough.

2. CONCLUSIONS AND RECOMMENDATIONS

- 2.1 Note and comment on the progress achieved since the CAN Annual Report issued in July 2023 but also recognise the need for much greater decreases in greenhouse gas emissions both for the council operationally and the borough as a whole. It is recognised that although much progress has been made, significantly more action is required to meet both the council's 2030 operational net zero target and the biggest challenge of remaining within the borough's carbon budget set by the GM wide 2038 carbon neutrality target.
- 2.2 Endorse the publication of
- 2.3 a modified version of this report on the council's website.

BACKGROUND PAPERS

[Stockport Council CAN Strategy – Oct 2020](#)

[CAN annual report 2022 - 2023](#)

Anyone wishing to inspect the above background papers or requiring further information should contact Nick Leslie on Tel: 07775804984 or by email on nick.leslie@stockport.gov.uk



CAN Annual Report April 2023 – March 2024

Contents

1. Introduction
2. Context
3. CAN Progress 2023-2024
 - 3.1. Council CAN
 - 3.2. Renewable Energy
 - 3.3. Low Carbon Buildings
 - 3.4. Sustainable Transport
 - 3.5. Natural Environment
 - 3.6. Climate Friendly Borough / CAN Engagement
4. CAN Forward Plans

Appendices

- A: Further detail on CAN projects and progress 2023-24
- B: Context for 2038 Carbon Neutrality target
- C: Key Terms

1. Introduction

The following report outlines progress made at Stockport Metropolitan Borough Council (SMBC) in implementing the Climate Action Now (CAN) programme over the last financial year 2023-24. It focuses on projects completed or underway aligned to each of the core CAN programme workstreams.

Development of a district heat network has been progressed this year with strategic, economic, commercial, financial and management cases developed, and an application made to the Green Heat Network Fund.

Action on public and active transport has seen the opening of the new Stockport Interchange, progression of a new train station in Cheadle, developing a business case for Metrolink coming to Stockport and walking and cycling routes connecting across the borough.

Ambitious council-led projects like the adaptation and resilience building in Edgeley and regeneration of the town centre will enable wider transformation, plus by enabling others to decarbonise, we can help create jobs and enhance the local economy while attracting investment into the borough.

Actions have also been taken to install solar photovoltaics (PV) on council buildings, decarbonise schools, engage with the council's supply chain to reduce greenhouse gas emissions and deliver a climate-friendly borough engagement programme with schools, communities and businesses.

Significant progress has been made, however there is so much more to do to meet both the council's own operational 2030 net zero target and the boroughwide 2038 carbon neutrality target. It is imperative we act now to reduce the long-term impact and costs of climate change, not just on people across the planet, but locally too.

2. Context

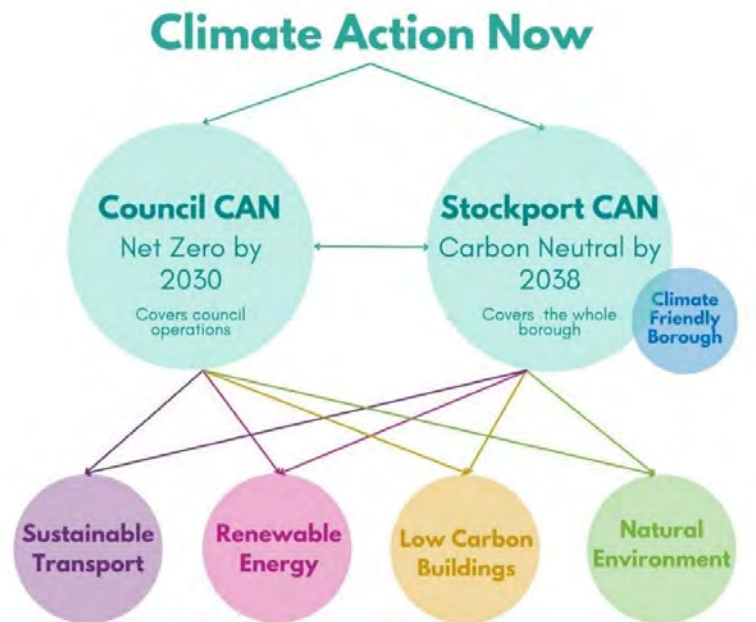
Stockport's CAN strategy, adopted in October 2020 with cross party support, aligns with Greater Manchester's goal for carbon neutrality by 2038. The council has further pledged to achieve operational net zero GHG emissions by 2030, focusing on its services and leadership in emissions reduction. The council's direct emissions arising from its operations account for roughly 2-3% of emissions in the borough; however, it is committed to guiding and supporting the borough's collective efforts to meet the 2038 target, leveraging its civic leadership role to drive change across all sectors.

The One Stockport Borough Plan, developed by the Council together with key partners and through engagement with Stockport residents, sets out a vision of a climate-friendly Stockport that promotes a responsible and sustainable borough:



The [Stockport Council Plan 2024-27](#) describes the key role the council plays in supporting this long-term vision of the borough; through the provision and delivery of key services that are essential to everyday life. The plan identifies Climate Action and Fair & Inclusive as the two cross-cutting themes that impact and shape everything the council does.

The report updates on work across the six key areas (Council CAN, Renewable Energy, Low Carbon Buildings, Sustainable Transport, Natural Environment and Climate Friendly Borough) and then outlines future plans.



3. CAN Progress 2023-2024

The following sections outline the key projects and progress made within each of the six key areas of the CAN programme. More detail on each of the projects can be found in the appendix.

3.1. Council CAN

Council CAN describes what we 'do' as a council. This means ensuring the operations and culture at SMBC align with delivery of our CAN 2030 and 2038 targets. The council aims to mitigate its impacts on climate change and aid adaptation to climate change. This means helping to enhance a culture at SMBC where CAN is at the heart of all policies and delivery of projects and services. This is demonstrated by the [2024-2027 Council Plan](#) highlighting Climate Action Now as one of two cross-cutting strands (Fair & Inclusive being the other) that impact everything we do as a council.

3.1.1. Measuring and Monitoring Operational Greenhouse Gas Emissions

Effective management requires accurate measurement and monitoring of GHG emissions. This is essential for setting dependable KPIs to meet CAN targets and driving the decarbonisation of civic assets. Establishing GHG emissions reporting is also the foundation for setting science-based targets. Reliable, current emissions data is vital for both these processes. In 23-24 we have made changes to how we collect data to monitor our GHG emissions. These changes have been made to improve processes and align with external data holders. Following these changes, 23/24 GHG emissions reporting will be provided in the autumn and from there science-based targets will follow.

3.1.2. Improving the Sustainability of Our Supply Chain

The council have introduced a new approach that will lead to reductions in GHG emissions arising from the council's supply chain. This will require businesses bidding for contracts with the council to provide evidence that they have a credible plan in place to reduce their own GHG emissions by 2038. We will also require businesses we work with to provide data of the GHG emissions associated with their contract with Stockport Council.

The Council spends over £300 million annually through its supply chain every year and supply chain emissions make up a large proportion of our GHG footprint. By working with our suppliers to encourage and support environmentally friendly businesses, we will decrease emissions across the borough and will demonstrate that Stockport is the place to be for innovative working and green investment. Support for local businesses to adapt to these procurement changes are also being developed such as the Carbon Literacy for Business as outlined in the Climate Friendly Borough / CAN Engagement section.

3.1.3. Greenfleet – Transitioning to a Zero-Emissions Fleet

Over the course of 2023-24 Totally Local Company (TLC) have continued to work on reducing the GHG emissions of their operations with work taking place around the vehicle fleet as well as the operating site at Endeavour House.

At the strategic level a report, commissioned from Logistics UK, reviewing how the vehicle fleet could be decarbonised was delivered, with the recommendations set to form the basis of TLCs vehicle procurement strategy moving forward.

3.1.4. Carbon Literacy

115 officers and Members were trained this year, through bespoke team Carbon Literacy training days and the addition of CAN training in Members' induction. This brings the total trained to 303. After taking the course, learners reported feeling more knowledgeable about climate change and more empowered to take actions.

During 2023, staff at Stockport's Planning and Building Control service became the first local planning authority in England to be certified as Carbon Literate. In 2024, the Technology service became the second team in the council to be fully Carbon Literate.

3.1.5. Green Libraries Working Group

Stockport Libraries are leading on the regional GM Libraries Task and Finish Group for Climate. This new responsibility has inspired the library service to implement a series of actions, including changes to operations to reduce GHG emissions including their buildings and fleet, setting up community gardens and resident engagement programmes.

3.1.6. SMBC Best Practice

Sharing and learning about best practice is key to improving the Council's performance to meet our climate targets. As the council is a member of UK100, the portfolio holder for Climate & Environment completed participation in the UK100 Leadership training programme. Stockport Council form part of the Greater Manchester 5 Year Environment working group and meets quarterly with climate officers across Greater Manchester to actively learn from one another's' actions and approaches. This has led to sharing Stockport Council's Schools Climate Assembly model with other GM councils who have then delivered their own youth climate debate projects.

3.2. Renewable Energy

Reducing GHG emissions from energy use via efficiency and generating more renewable energy is paramount to meeting our net zero and carbon neutrality targets. To that end, this key area of focus for the CAN programme aims to increase the amount of renewable energy generated in Stockport both directly through using council property and land, but also in partnership with public and private bodies. Below are some of the key areas of work being undertaken by the council to enhance renewable energy generation.

3.2.1. District Heat Network powered by renewable energy

Stockport Council, the Mayoral Development Corporation (MDC) and other anchor organisations, such as Stepping Hill hospital, are progressing opportunities presented by development in Stockport to accelerate the decarbonisation of the Stockport energy system at scale. Previously awarded grants won by the council are funding technical and economic project development of a district heating network (DHN) powered by renewable energy. This government-funded, detailed piece of work assesses the feasibility of a heat network based on extracting heat from Stockport sewers using heat pumps to provide hot water for heating public buildings. This is pioneering decarbonisation work. A DHN of this size and scale could save more than 7,000 tonnes of carbon annually and make a major contribution to Stockport's climate ambitions. An application to the government's Green Heat Network Fund was made in February this year and if successful will enable development at speed.

3.2.2. Schools solar

During 2023, the European Regional Development Fund (ERDF) supported the installation of solar panels on four schools: Bramhall High School, Ladybridge Primary School, Westmorland Primary School, Banks Land Junior and Infant Schools.

An ongoing project with GMCA "Powering our Schools" continues to promote solar onto school roofs and we are working with a further 9 schools in Stockport to facilitate installations.

3.2.3. Council buildings – solar

During 2023, the ERDF also supported the installation of solar panels on four public buildings; Life Leisure Grand Central, Endeavour House, Stockport Sports Village and Stockport Exchange multi-storey car park. This will save 101 tonnes GHG emissions per year.

Feasibility studies looking at suitable buildings for solar installations, preparing business cases and installing as appropriate are the bedrock of our estates decarbonisation strategy and continue at pace.

3.3. Low Carbon Buildings

The impact on climate change arising from buildings is one of the largest contributors of GHG emissions in the borough. Work on this key area for the CAN strategy focuses on ways the council can ensure that current and future buildings of Stockport are sustainably designed and powered. Along with decarbonisation work already outlined in the Council CAN section concerning our own civic estate, below are some further actions that were undertaken this year to promote the low carbon-built environment.

3.3.1. Decarbonising Dial Park Primary School

As part of a programmed investment to replace the heating system at Dial Park Primary School, a Public Sector Decarbonisation Scheme grant has supported insulation of roofs, walls and replacement doors as well as switching from gas boilers to air source heat pumps. The work has meant the main school is now fully decarbonised. This will save around 55 tonnes of carbon per year and be a case study for schools of a similar type.

3.3.2. Swimming Pool Support Fund – energy efficiency

During 2023 we received funding from the government-funded Swimming Pool Support Fund, specifically aimed at improving energy efficiency in swimming pool operations. Previous feasibility studies on our leisure centres had identified these buildings as large contributors to the council's GHG emissions. The fund has been used for replacing old air handling units at Romiley life leisure with modern heat pump driven units plus heat recovery, eliminating gas use and saving around 30 tonnes GHG emissions per year.

3.3.3. Heat Decarbonisation Studies

During 2023, as part of a GMCA funded programme, we have delivered Heat Decarbonisation studies on 9 public buildings including schools, leisure centres, libraries and community buildings. This work will provide a pipeline of opportunities ensuring we are ready for the next wave of investments and grant opportunities arising. We are actively seeking to build on our already successful approach to securing funding and will continue to use the reports to apply for grants (such as PSDS and the Swimming Pool Support Fund) to bolster the Stockport Estates decarbonisation programme.

3.3.4. Cheadle Eco-Business Park at Birdhall Lane

Cheadle Eco Business Park will see a council owned 7-acre industrial estate on Bird Hall Lane redeveloped into a sustainable eco-business park with a focus on sustainability in construction, operation and clean energy generation. Various construction methods are being considered which will allow for the maximisation of solar PV on the site as well as reducing embodied carbon in construction. This includes considering innovative construction methods such as the use of a glulam timber frame for parts of the structures. Planning permission was obtained in April 2024 and tenders received for the construction of the scheme are currently underway with a view to appointing a building contractor later this year.

3.3.5. Stockport Homes Group – social housing

Stockport Homes Group (SHG) manage Stockport's council housing stock as an arm's length organisation that is wholly owned by the council.

Social Housing Decarbonisation Fund

Delivery of Wave 1 of the Social Housing Decarbonisation Fund (SHDF)' programme was completed in 23-24, with installations of new energy efficient storage heaters and solar PV panels being fitted to properties. SHDF Wave 1 has improved the Energy Performance Certificates of 46 properties to a C rating or above. SHG (as part of the wider GM Consortium) were successfully awarded funding from the SHDF Wave 2, which will see further improvements made on up to 76 properties over the course of 24-25.

York Street-Heating Upgrades Works

In 23/24 SHG received funding from the Heat Network Efficiency Scheme to upgrade the district heating infrastructure on the York Street estate in Edgeley. The Heat Network Efficiency

Scheme supports performance improvements to existing district heating or communal heating projects. It is estimated that this project will save over 230 tonnes of CO2 per annum.

Solar Photovoltaic Re-roofing

As part of the annual Planned Roofing Programme, Stockport Homes are installing Solar Photovoltaics (PV) to all suitable properties. In 23/24 Stockport Homes installed new Solar PV Systems to 60 properties on the Planned Roofing Programme. Solar PV installs will continue in the 24/25 Planned Roofing Programme.

3.3.6. Grant Schemes and Support for Home Improvements

Delivery of national grant schemes and offers has been progressed through partnership of the Greater Manchester Housing Retrofit group. This has seen action through the following workstreams:

GMCA Retrofit Portal

The 'retrofit portal' allows residents to [check their eligibility](#) for support to make home upgrades. The portal is a one-stop source of trusted information, connecting residents to relevant-to-them information about the ECO grant, Great British Insulation Scheme, Octopus Air Source Heat Pump offer and Your Home Better support.

ECO 4 Grant Scheme

Following a Greater Manchester Combined Authority procurement, ImprovEasy was appointed contractor for delivery of the ECO4 grant scheme covering Stockport, Trafford and Manchester. Between April 2023 and March 2024, 198 households in Stockport received funded home improvements through the ECO 4 grant scheme. The total benefit of the measures was £1,443,500. The average annual energy bill saving for those households that participated is £591.84. The CO2e saved was 1,133 tonnes. As a result of this work, 36 jobs and 2 apprenticeships were created by ImprovEasy.

Your Home Better

The GM wide programme '[Your Home, Better](#)' has been enhanced. The scheme helps provide advice around home improvements in terms of renewable energy options, energy efficiency and insulation (retrofit).

Feel The Benefit

In 23/24, Your Home Better (YHB) were appointed as delivery partner for the Feel The Benefit campaign, a Greater Manchester wide initiative launched on the 4th March 2024 as part of the Local Area Demonstrator Project. This campaign aims to help residents better understand how upgrades can help make their homes greener, warmer, and cheaper to run, driving them to engage with the advice, support, and potentially even free or discounted upgrades. Stockport Council were one of three boroughs in Greater Manchester to include a Feel The Benefit flyer along with council tax mailout. YHB will provide support and advice at local events, starting in spring 2024 and running throughout the year. Resident's will be directed to utilise the 'retrofit portal' to [check their eligibility online on GMCA's eligibility checker](#), entering details about their home and circumstances to find out what support they might be eligible to receive.

3.3.7. Supporting the Stockport Green Economy – Mayoral Development Corporation Green Skills Partnership and Hub

Driving innovation to reduce GHG emissions generated by conventional construction and operation of residential and commercial buildings is a key aspect of the Mayoral Development Corporation's (MDC) objective of creating an exemplar future proofed urban neighbourhood. This is a key goal for the MDC but also represents a powerful opportunity to stimulate the growth of local sustainable construction businesses and jobs. In June 2023 the MDC team convened a Task and Finish Group to develop proposals to:

- Bring about a step change in the number of construction skills and employment opportunities for local people
- Drive investment into local construction firms that specialise in environmentally sustainable methods and technologies
- Create inclusive skills pathways for local people to secure good jobs in the sector

Work has led to proposals for an MDC Construction Hub which will deliver on these. The 'Green technologies and construction growth programme' is one of these workstreams and being jointly led by Stockport Council and GM's Green Economy service.

3.4. Sustainable Transport

GHG emissions arising from transport across the borough are another key factor that must be addressed to meet the 2038 carbon neutrality target. Implementing sustainable transport and more active travel options including the promotion of walking, cycling and the use of public transport within the borough and the wider GMCA are key. This is reflected in One Stockport Borough Plan which looks to improve sustainable transport options and connectivity while reducing traffic congestion.

The council is currently progressing three significant pieces of work under the Southern Gateway programme, to bring Metrolink, an improved Stockport Town Centre Rail Station and an improved franchised bus network to Stockport. We will continue to work with TfGM and the Mayor's Office on these strategic, transformational initiatives and anticipate some positive announcements over the 2024/25 period.

3.4.1. New Interchange

The Interchange and the Viaduct Park on its roof were successfully opened alongside the improved connection to the railway station for both pedestrians and cyclists. This provides connectivity between bus and rail for passengers and so improves the ease and attractiveness of public transport. The walking and cycling connections increase the connectivity of different areas of the Town Centre and the Trans Pennine Trail route through the Town Centre.

3.4.2. Franchising and Electrification of Bus Fleets

The new bus franchise arrangements will be in place in January 2025. The franchising means that there is public control of buses for the first time in a generation, providing an opportunity for investing in a more co-ordinated service and increase patronage. In addition, the franchise will see the electrification of the Stockport based fleet. The electrification of the bus fleet is a major factor in ensuring that Stockport complies with its clean air obligations.

3.4.3. Stockport Station

Stockport's rail and wider public transport connectivity underpins the Council's regeneration strategy. For the town centre, Stockport station is key to this as it is located in the MDC area, providing public transport connectivity for the planned development of homes and businesses. Work has continued in 2023/24 to progress Stockport's aspiration to rejuvenate the station including successfully entering the CRSTS programme in July 2023, attracting £1.35m design development monies.

3.4.4. Developing business case for Metrolink

The council has significantly accelerated our engagement with TfGM and the Mayor's Office through 2023/24 and are anticipating securing business case funding during the 2024/25 period. The Leader held a high-level Roundtable in December 2023, securing commitment to investing in Stockport's railway station and Metrolink to reaffirm Stockport's status as the Southern Gateway for Greater Manchester.

3.4.5. Cheadle Rail Station

Work has continued on the development of the Cheadle Rail Station with the successful application for planning permission and we expect to be on site in the coming months.

3.4.6. Electric Vehicle Charging Infrastructure (EVCI)

Stockport is working with Be.EV to deliver the provision of electric vehicle (EV) charging in council car parks for residents and visitors. 3 sites have been delivered providing 8 charging bays and a fourth is currently in construction. 7 further sites are in the final stages of legal agreements.

Working with Transport for Greater Manchester (TfGM) new Taxi and Private Hire Car charging bays in New Bridge Lane Carpark, Torkington Park Carpark and Lomas Street, Edgeley have been installed.

Work is ongoing to develop future sites for the Be.EV partnership and to work with TfGM to develop and deliver the bid for Local Electric Vehicle Infrastructure (LEVI) funding to address the needs of residents without driveways to charge their cars.

3.4.7. Walking and Cycling Opportunities

Work undertaken to improve walking and cycling opportunities includes delivery of the City Region Sustainable Transport Settlements, Active Travel Schemes and Mayor's Challenge Fund schemes. See the appendix for further details. The council's Road Safety team promote safe walking and cycling, WOW days, park and stride and school travel plans. Community walking is promoted through wellbeing walks, which are supported by our Community Rail Partnership.

3.4.8. School Streets and Turn It Off campaigns

Work related to clean air near schools in 2023-24 has included the "Turn It Off" campaign to encouraging parents/ guardians and visitors to turn off their engines when stopping near the school and supporting School Streets. There are currently four school streets in the borough, which have all had their Traffic Regulation Orders made permanent.

3.4.9. LED Investment Programme for Streetlighting

Upgrades to streetlighting across the borough using LED technology have been finalised, including decorative lighting in the town and district centre areas and illuminated signs. Most of the infill columns have now been installed across the borough and this year's work included Merseyway

lighting, decorative upgrades on other parts of the highway network, and the start of LED changes to illuminated road signs.

3.4.10. On The Way Play SK (OTWP SK)

‘On The Way Play SK’ is a pilot project delivered in Edgeley that aimed to create child-friendly places, encourage active travel, and build social connections. It was led by Civic and Social with help from CAN, supporting the council’s climate-friendly and sustainable transport goals. The project was funded by the UK government through the UK Shared Prosperity Fund (UKSPF) and was delivered in Spring 2024. OTWP SK has seen installation of a pop-up play and dwell space on Castle Street along with colourful, playful prompts situated along walking and wheeling routes. The project will be in place for 6 months.

3.5. Natural Environment

This aspect of the CAN strategy focuses on a 10-year plan to enhance biodiversity and increase ‘green canopy’ across the borough, with nearly 7,000 trees planted through the plan prior to the reporting year. The introduction of the 10% Biodiversity Net Gain (BNG) legislation in early 2024 is also a key driver for the Natural Environment workstream.

3.5.1. Woodlands, Orchards and Meadows

1,153 trees and 600 fruit trees were planted between December 2023 – March 2024 which has helped towards targets on tree planting for individual tree planting and orchards. One new wildflower meadow has been created this year alongside the new orchards.

Stockport Council have run Orchard Mentor training for residents for the third year running, with plans to run the project for the remaining 7 years of the 10-year plan. The training includes teaching pruning and maintenance to volunteers who will then manage the community orchards. During this year, 6 Orchard Mentors were trained who will now go on to cascade learning into their community.

Alongside this, Stockport Council train volunteers to be able to safely enhance and improve greenspaces. Volunteers receive Task Day Leader and power tool training. Stockport Council have also run graffiti removal and pruning training events for residents.

3.5.2. Viaduct Park

Stockport Interchange adopted a 2:1 tree planting policy which resulted in the planting of 95 new trees in the new park and approximately 400 more across the wider development and town centre.

In addition, the park has an in-built ‘blue-roof’ drainage system that will capture and store rainwater to allow controlled run-off into drainage outfall and watercourses, helping to reduce flood risk and further supplement the sustainable features within the development. These include an array of PV solar panels generating renewable energy both within the interchange and on the residential building roof.

3.5.3. Biodiversity Net Gain and the Members’ Local Nature Recovery Group

Biodiversity Net Gain (BNG) became mandatory on 12 February 2024 for major planning applications, and on 2 April for all other minor applications (subject to some exemptions).

A strategy for off-site Biodiversity Net Gain (BNG) unit provision is being developed to ensure BNG contributions arising from development in Stockport, stay in Stockport and are utilised by the council to improve local biodiversity, together with fulfilling our other statutory responsibilities.

A cross-party Members' Local Nature Recovery Group was established in 23-24 which has a remit similar to the CAN Members Group but focussing on nature recovery in the borough.

3.5.4. Friends of Parks

The Friends of Parks Groups working in Stockport are hugely valuable in improving the quality of local parks and providing activities to encourage footfall. Activities include regular tidy days and litter picks, planting projects and maintenance works with community fundays or activities, encouraging local people to visit their park.

3.5.5. Effective natural flood risk management

Development of emergency flood plans for the reservoirs in Compstall and Reddish Vale has been progressed, alongside collaboration with United Utilities (UU), the Environment Agency (EA) and Mersey Rivers Trust on studies and flood mitigation schemes including the creation of 'leaky dams' and swales projects. See the appendix for further detail on delivery through the Mersey Rivers Trust partnership.

The council has been successful in several funding bids such as the Northwest Regional Flood and Coastal Committee (RFCC) under their 'Local Levy' programme. Works to contribute to improvements at Cown Edge Way, Offerton, and Lavington Avenue, Cheadle are complete.

Additional work is underway at Torkington Park, Hazel Grove and Bruntwood Park, Cheadle. More schemes are planned with works around Wilmslow Road, Cheadle due next year and bids are proposed for Hazel Grove Golf Club and Woodbank Park, Offerton. The council has worked with the National Trust to aid a successful bid for water management in Lyme Park to slow water flows going into Stockport.

Stockport has been successful in establishing pilot projects led by EA and UU to focus on the River Tame, Micker / Ladybrook and Poise Brook and these will continue for several years. An initial study for Romiley was completed and more studies are planned this year using EA grants.

3.5.6. Recycling & Waste

Stockport residents continue to reduce waste going into the black bin via recycling options. Less waste arising in black bins means a reduction in financial costs arising from waste charges and reduces environmental impacts. The performance on this measure (residual waste arising) is consistently the best in GM and in the top 10 nationally. Residents are achieving great success in their recycling effort – Stockport is the best metropolitan borough in the UK for recycling performance.

Residents' behaviour remains vital in reducing waste arising and promoting recycling. The council continues to work closely with GMCA to progress these aims and influence residents and businesses behaviour.

3.6. Climate Friendly Borough / CAN Engagement

The council is committed to guiding and supporting the borough's collective efforts to meet the 2038 target, leveraging its civic leadership role to drive change across all sectors. Through the climate-friendly borough engagement programme, the council aims to inspire and enable actions with young people, communities and businesses. Stockport's innovative engagement programme

has been highlighted nationally with other local authorities following our approach. For example, Stockport's innovative youth climate assemblies have been shared with and adopted by other local authorities.

3.6.1. Schools and Youth Climate Assemblies

In the Schools and Youth Climate Assembly, young people take part in climate action and democracy lessons within their own classrooms before leading a youth debate with other schools in the Council Chambers at Stockport Town Hall.

In 2023-24, over 1800 young people engaged with the project through lessons, workshops, school assemblies, youth summits, video lessons and the Town Hall debates. Over 100 climate action ideas were submitted to the council by young people. 80 young people representing 30 schools and colleges took in debates in March and voted to support an action to set up more swap shops, recycling bins and compost areas. This winning idea was a composite action submitted by St Mary's Primary, Reddish and Cale Green Primary.

Youth Vote actions

In 22-23, young people voted in support of more "community gardens where people can plant and pick fruit and veg, reducing the carbon footprint of food." (St Paul's Primary, Brinnington). In response the council gave grants to develop food growing spaces, offered tree site assessments to schools and launched 'Book Worms community gardens' at libraries. Additionally, a 'We CAN Activity Calendar', with illustrations by St Winifred's primary, was created to share young people's climate action ideas with schools and community members.

In 2023, the young people who proposed 21-22's winning eco-friendly period products idea were celebrated by Mayor of Greater Manchester, Andy Burnham, at the Greater Manchester Green Summit.

3.6.2. Resilience 4 Cities

Stockport were successful in being chosen as a focus area for Greater Manchester as part of a three-year joint Resilience 4 Cities (R4C) initiative between the GM Resilience Unit, Resilient Cities Network, the ZZurich Foundation and Zurich Insurance. The programme will focus on Edgeley and involves working with the communities, businesses and stakeholders to help inform understanding of climate risks and community resilience and includes £100k ring-fenced funding for resilience building initiatives. The aim is to co-develop solutions with the residents and businesses of Edgeley to help local people cope with the impacts of climate changes. The project will particularly focus on how people will be impacted by prolonged heatwaves.

3.6.3. Stockport CAN Summit

The CAN Summit took place on 9th November 2023 with 161 people attending in person and online with the aim of celebrating and growing climate action across the borough. Young people's voices were highlighted at this year's summit with students from St Paul's Primary School, Brinnington and Trafford & Stockport College Group addressing the audience. Workshops captured attendees' views on climate action priorities, approaches to climate action in Stockport and how to promote energy efficiency and home improvements (retrofit).

3.6.4. Stockport CAN Fund

Two new Climate Action Now (CAN) Funds were launched on 25th March this year that will run through to the following March. This iteration of the CAN Fund will feature two funding streams:

The CAN Seed Fund will support community-led projects delivered at a ward level. Decision-making for the CAN Seed Fund will be made by relevant ward Members at Area Committees in a similar way to the Ward Flexibility Funding and will sit alongside that scheme.

The CAN Catalyst Fund will enable larger, high impact projects that lead ambitious climate and nature actions. Allocation of funding will be assessed and determined by the Cabinet Member for Climate Change & Environment with support from the CAN team.

3.6.5. Support For Businesses

The [Climate Action Business Forum](#) engaged 72 people from 54 businesses through events and training. Speakers and workshops at forum events included: Energy Saving Trust, Bee Net Zero, BASF, Datesand, Kelsall Architects, setting sustainability goals and speed networking.

12 Stockport businesses completed Journey to Net Zero training with the Business Growth Hub this year. Alongside this, the [Green Economy](#) has built a network of over 500 local green technologies and services suppliers supports businesses to decarbonise through specialist support.

To further enable businesses to start their sustainability journey, in kind support from Manchester Metropolitan University and local businesses Litmus Sustainability, musicMagpie, One+All and BASF has been leveraged to create a We Mean Business Carbon Literacy course. The course was successfully piloted with representatives from 10 businesses in November 2023. All learners gained certification and gave feedback to support the further development of the course.

3.6.6. Support for Communities

The Stockport Green Network was instigated by the council and is a space for residents and members of voluntary, community, faith, and social enterprise groups to come together around climate and environmental action. During this reporting year, 53 people from across 37 groups have acted as part of the network.

The inaugural 'Greenstock', a community fun day set up by the Stockport Green Network, saw over 314 people attending and 49 volunteers leading the event at Kindling Trust's Woodbank Community Food Hub.

As part of this year's 'Climate Action Now week', Stockport Council ran a Community Leaders Carbon Literacy course through which 10 community leaders got their official Carbon Literacy certification that enables them deliver training for other people.

3.6.7. Stockport Food Partnership

The Stockport Food Partnership has further developed in 23-24 since its inception in 2022. The partnership is focusing on three action groups: food poverty led by the Stockport Food Network, community food education, and food waste. This year the partnership will bring together businesses, emergency food provision services, community members and public sector to share experiences and take collaborative action to reduce food waste in Stockport.

4. CAN Forward Plans

In addition to the previous and current actions undertaken during 2023-24 outlined, the following details highlight further significant work planned for delivery.

KPIs and GHG budgets: an implementation plan is in place and preparatory work has begun to establish KPIs for CAN workstreams and developing GHG budgets for council services

Local Plan: during 2023/24 work feeding into the Local Plan has been updated and policies have been evolved in line with best practice to ensure readiness for public consultation. The Local Plan contains objectives which set the planning and spatial context for delivering our One Stockport Borough Plan. These planning objectives are intended to ensure a resilient and healthy borough which delivers carbon neutral development by 2038, whilst adapting to the impacts of climate change and increasing biodiversity through sustainable development. The draft local plan will be the subject of consultation where we seek views on a whole range of policies, encouraging all residents and stakeholders to participate in the process and help shape the future of the borough.

Climate Resilience and Adaptation Planning: Stockport Council is embedding climate resilience and adaptation into its own operational planning, ultimately leading to creation of an actionable adaptation plan.

Interchange Connections: the final elements of the Interchange will be realised with work taking place on the riverside path and helix ramp to improve connectivity for cyclists and pedestrians with the Trans Pennine Trail, access points around the Interchange and activation of the site.

Walking and Cycling: actions to increase sustainable travel options will include further development schemes including the Marple Community Hub and Marple Area Cycling and Walking proposals, the Greek Street CRSTS Walking and Cycling proposals, Romiley to Stockport scheme elements, parts of the proposed walking and cycling route which avoids busy roads as part of a plan to make active travel the number one choice for travelling to work, to school and to the shops for residents in Romiley and Bredbury Green, Heatons Cycle link elements in Heaton Mersey common, and provision of the improved Bridleway in the Ladybrook Valley between Bramall Park Road and Ladybridge Road.

On street electric vehicle charging – LEVI and Be.EV: Coordinated by TfGM, LEVI funding from central government will support low voltage on street charging for residents without off street parking opportunities at home. Work with Be.EV to deliver rapid charging to the public in council car parks will see a further 7 sites progress.

Climate Engagement Programme: delivery of the Climate Friendly Borough climate engagement programme will include the CAN summit, the Climate Action Business Forum, We Mean Business Carbon Literacy, the Stockport Green Network, the Schools & Youth Climate Assemblies, support for greenspace volunteers and the CAN Seed and Catalyst Funds.

Appendix A: Additional detail CAN Annual Report

This appendix to the CAN Annual Report provides additional detail on projects and progress made within each of the six key areas of the CAN programme.

3.1 Council CAN

Improving Our Supply Chain

- Working with STAR procurement, all contracts above STAR's 'Find a Tender Threshold Contract Opportunities' will be affected by this new approach. This includes businesses with contracts over £5,336,937 (Inc VAT) for Works and over £213,477 (Inc VAT) for Goods and Services contracts.
- Related policies were introduced by the UK Government in 2021 and the Greater Manchester Combined Authority in 2022.

Greenfleet – Transitioning to a Zero-Emissions Fleet

- TRAILAR solar panels are in use on six refuse trucks, directly leading to the saving of 1,546 litres of diesel over the year, equating to a reduction of 4 tonnes of CO₂. Going forward all suitable vehicles procured will be fitted with the same system to ensure emissions are minimised.
- The procurement of a new electric road sweeping vehicle is the first step in bringing in alternative fuel vehicles as they become available across the vehicle types operated.

Ways of Working

- The refurbishment of Stopford House embedded a flexible hybrid working model that continues to support our staff while also reducing carbon emissions from staff travel and use of office space. The refurbishment included new and increased cycle storage and shower facilities.
- The council offers a Cycle to Work scheme and salary sacrifice schemes for bus and rail season tickets and purchase of electric vehicles.
- Electric vehicle charging points are available to staff in the Stopford House car park.
- Internal communications promote the use of the Enterprise Car Club.

Impact Assessment Review

- Environmental Impact Assessments (EIAs) are mandatory for all decision-making reports, ensuring that all key decisions and major investments consider the impact of climate.
- Further alignment of an updated EIA with the statutorily required Equality Impact Assessment (EqIA) and a Health Impact Assessment (HIA) is underway.

Carbon Literacy

- Prior to the current reporting year, 189 colleagues had undertaken Carbon Literacy training, including senior management and Members. A bespoke Stockport Council Carbon Literacy course has been in operation since September 2022.

Green Libraries Working Group

Stockport Libraries are leading on the regional GM Libraries Task and Finish Group for Climate. This new responsibility has inspired the library service to implement a series of actions, including:

- Setting up a 'Book Worms' community garden and wellbeing hub that is ecologically supportive to a variety of species at Bredbury Library – the team were successful in a funding bid for £10,000, one of only 55 projects across Europe. They are working with

school children, visitors and businesses to plan the garden and get community feedback. The library also hosted 'dig it' days for residents and worked in partnership with local community groups such as Sustainable Living Romiley, the Stockport Green Network and local garden centres.

- Created a community garden at Cheadle Hulme Library – working with local school children, community groups and leveraging support from businesses. The garden is filled with plants and benches donated by the local community and businesses.
- Analysed vehicle routes to improve efficiency and to aid a switch to adopting electric vehicles.
- Scrutinised greenhouse gas emissions data for library buildings leading to Estates colleagues placing funding bids for new heating systems at two libraries.
- Created recycling points for print cartridges and plastic for residents to drop off at their local library.
- Removed plastic jackets from books and introduced 'well loved' and 'rescued reads' stickers to older books to engage visitors with climate messaging around reuse.
- Ran a competition with young people to design a new biodegradable library card. This competition saw 40 entries celebrating libraries, books, and climate.
- Carried out a 'summer of bee and bat events' where visitors could learn about the environment and caring for nature.
- These events attracted over 300 families across 8 libraries during the sessions.

3.2 Renewable Energy

Schools solar

- The ERDF supported the installation of solar panels on four schools (Bramhall High School, Ladybridge Primary School, Westmorland Primary School, Banks Land Junior and Infant Schools) has the total capacity of 379 kWp (kilo Watt peak potential) and will generate about 354 MWh of electricity per annum saving 68 tonnes per year of Carbon.

Council buildings – solar

- The ERDF supported installation of solar panels on Life Leisure Grand Central, Endeavour House, Stockport Sports Village and Stockport Exchange multi-storey car park has the total capacity of 684 kWp and will generate about 524 MWh of electricity per annum saving 101 tonnes of GHG emissions per year.
- The installation of solar panels at Endeavour House has been completed with an expectation that the site will be self-sufficient through the use of solar energy with excess generated energy held in onsite batteries and further surplus exported to the grid.

Residential and commercial – solar

- During the monitoring year we dealt with 7 large applications on the roofs of existing buildings, all of which were approved. If these sites are all fully implemented, there will be an estimated total generating capacity of 1,421kWp which could generate approximately 1,284 MWh of electricity per annum avoiding approximately 286 tonnes CO₂e per year.

3.3 Low Carbon Buildings

Cheadle Eco-Business Park at Birdhall Lane

- Cheadle Eco Business Park will see a council owned 7-acre industrial estate on Bird Hall Lane redeveloped into a sustainable eco-business park with a focus on sustainability in construction, operation and clean energy generation. The development is supported by £4.44m of Cheadle Towns Fund Grant. Various accreditations are being considered including BREEAM with a view to achieving a minimum rating of Outstanding. The key focus is on measurable carbon reducing strategies and innovative sustainable design.
- Consultants undertook an initial feasibility study, starting in 2022, into the methods of energy generation that could be considered on the site including solar energy generation and air source heat pumps.

Mayoral Development Corporation Town Centre West

- The Mayoral Development Corporation (MDC) was created to regenerate 'Town Centre West', transforming a 130-hectare area of brownfield land to the west of Stockport Railway Station into an exemplar urban neighbourhood.
- Across all development schemes, the MDC is prioritising minimisation of embodied carbon emissions by retrofitting existing buildings including the 1960s Royal Mail sorting office into the Mailbox, Grade II listed Weir Mill and St Thomas's Hospital, and advocating for the reuse of existing materials.
- The MDC has partnered with leading developers in the field of environmental sustainability, this was key criteria in the selection (in Spring 2023) of English Cities Fund as the joint venture partner for the development of the 1,200 home Stockport8 scheme. This includes work to establish the feasibility of a district heat network serving the area and wider town centre, powered by renewable energy, and proposals for highways improvements to consolidate traffic flows and create dedicated active travel infrastructure.

Stockport Homes Group – social housing

- 97% of properties have an Energy Performance Certificate (EPC) of C or above which is on track to meet the target for all council owned housing managed by SHG to be rated as C or above by 2025.
- Similar to last year 39.8% of properties have at least one form of renewable energy technology; an increase in installations of solar panels on SHG properties has taken place but not reflected in this reporting year, due to the removal from statistics of homes purchased through the right to buy scheme.

3.4 Sustainable Transport

Walking and Cycling Opportunities

Work undertaken includes continued delivery of the City Region Sustainable Transport Settlements, Active Travel Schemes and Mayor's Challenge Fund schemes including:

Consultation on:

- the Marple Community Hub and Marple Area Cycling and Walking proposals.
- the Active Transport Fund 4 Sandringham Road Footpath Widening.
- Improving Journeys – A6 Corridor in Stockport
- Greek Street CRSTS & the wider Edgeley Walking and Cycling proposals as part of the Edgeley Active Travel consultation.

Starting to deliver:

- Romiley to Stockport scheme elements, the proposed walking and cycling route avoids busy roads as part of a plan to make active travel the number one choice for travelling to work, to school and to the shops for residents in Romiley and Bredbury Green.
- Heaton's Cycle link elements in Heaton Mersey common, and
- Provision of the improved Bridleway in the Ladybrook Valley between Bramhall Park Road and Ladybridge Road.

Delivery of:

- Marketplace and Underbanks: a new pedestrianisation scheme for the Marketplace and Underbanks that will improve the visitor experience for residents and businesses as part of the regeneration of the town centre. Including automated bollards and related Traffic Regulation Orders.
- Mauldeth Road: crossing facilities for active travel users on Mauldeth Road at its junction with Kingsleigh Road.
- Bosden Fold, Hazel Grove – zebra crossing to improve pedestrian access to St Simons Primary School.
- Urban Traffic Control (UTC) Scheme Manchester Road: improving a crossing at Manchester Road / Bourne St from a Pelican Crossing to a Toucan Crossing.
- UTC Scheme Broadstone Road: to signal Broadstone Road / Broadstone Hall Rd North / South, Heaton Chapel, including toucan crossings on all arms of the junction.
- Bramhall: Path improvement from Bramhall Lane South to Dawlish Close.
- Turves Road: new puffin crossing on Turves Road, Cheadle improving access to a well-used public right of way.
- Compstall Road: new puffin crossing on Compstall Road, Romiley, to improve access to Romiley Station.
- New sparrow crossing on Stockport Road and links between Oak Road and Newland Road, Cheadle.
- New sparrow crossing on Cheadle Road and links between Bruntwood Lane and Brookfield Park, Cheadle.
- Improved path connection through Brookfield Park from Shiers Drive to Brookfield Road.

Activation activities for example:

- The promotion of the Bramhall Park to A6 cycle route at Bramhall Park and Hazel Grove Leisure Centre with guided walks and cycle rides, Dr Bike – bike maintenance, a children's scavenger hunt trail and the opportunity to try cargo bikes in the park.
- Work with the Community Rail Partnership includes: 'wellbeing walks' leader and volunteer leaders training, production and printing of quarterly walks programme which provides detailed information about walks with bus and rail as start and end points, and mapping support for the CRP's activities such as the Railway Children's Walk.
- The Walking & Cycling Forum meets quarterly to discuss projects, proposals and challenges relating to walking and cycling in the borough
- The Disability Stockport Transport and Access Forum's monthly meetings discuss how to address a wide range of transport related needs.

On The Way Play SK (OTWP SK)

'On The Way Play SK' was a pilot project delivered in Edgeley that aimed to create child-friendly places, encourage active travel, and build social connections. OTWP SK was made up of two design components.

- 'Portable Play Time' turned a pedestrianised area on Castle Street into a pop-up play and dwell space with play structures and informal seating. The space hosted community events

celebrating play, active travel and climate action, including child friendly walking and wheeling tours, lightning talks, workshops and a high street disco.

- The second element, 'A Child's Eye View', created playful walking and wheeling routes around Edgeley with custom decals co-designed by children. The decals feature active travel characters and playful prompts to encourage walking, wheeling, talking and playing together. The routes are based on the perspectives of local children from two Edgeley schools and the wider community.
- The 'Child's Eye View' routes were extended to the new Stockport Interchange encouraging more playful and joyful active travel in Stockport and connecting established communities with new town centre infrastructure.
- The project was highlighted as part of a GM Future Leaders showcase about this child-friendly, playful approach to place making and enabling active travel.

3.5 Natural Environment

Partnership Working

- Stockport Council continues to work closely with partners to effectively deliver on our Natural Environment work programme. This includes partnership work with City of Trees, particularly around urban tree planting; the Kindling Trust, from whom the council sources saplings; and George Cox Ltd, who assisted in delivery of the woodland at Penny Lane. A workshop involving all areas of the council's place and regeneration departments was carried out in May 2024 with City of Trees to identify further tree planting opportunities.

Effective natural flood risk management - Mersey Rivers Trust partnership

In 23-24, Stockport Council have worked with the Mersey Rivers Trust to deliver the following projects and activities:

- **Bruntwood Park:** Installation of leaky dams to reduce downstream flooding and slow the flow in the watercourse to reduce footpath erosion
- **Carr Wood:** Participation in annual bioblitz (community biodiversity surveying)
- **Cheadle Golf Course:** Installation of leaky dams to reduce flooding downstream in Schools Lane area and to support the creation of a Sustainable Urban Drainage (SuDS) basin, allowing water to back up and remain on the golf course
- **Cown Edge Way:** Installation of leaky dams and opening of broken culvert to reduce flooding on footpath
- **Greenspace Volunteers (Reddish Vale):** Supported the Greenspace Volunteers group (funded by Greater Manchester Environment Fund) with provision of equipment (tree poppers, scythes, litter picking equipment, ragwort forks) and training (scything). Supported in recruitment of new volunteers; two Ukrainian refugees volunteering regularly
- **Happy Valley:** Restoration of two ponds (removal of silt and encroaching vegetation and creation of a new pond. Otters have been seen using the new pond. Production of a poster encouraging the public to remove Himalayan balsam; this is already leading to public action
- **Micker/Norbury Brook:** Training of Citizen Scientists from Friends Of groups in Riverfly, a community-led monitoring and chemical testing of waterways project.

3.6 Climate Friendly Borough / CAN Engagement

Support for Businesses: Climate Action Business Forum

- The Forum meets quarterly. 64 people attended in June hosted by Stockport County, 41 people attended in September hosted by Robinsons Brewery, 26 attended the CAN summit in November, 10 took part in Carbon Literacy training in November and 31 attended in January hosted by Williams BMW.
- Since it formed in 2022, 169 people from 113 businesses have engaged with the network. At time of reporting 137 people are members of the Climate Action Business Forum's LinkedIn group, up from 65 this time last year.

Support for Businesses: Business Growth Hub, Growth Company

- Through the Business Growth Hub, fully funded places are available for Stockport SME's on the [Journey to Net Zero](#) training.
- [Green Economy](#) (part of the Growth Company's Business Growth Hub for Greater Manchester) increases the visibility of the green tech sector with an online [Marketplace](#) which enables businesses to find local, trusted partners for their transition to net zero.

Support for Businesses: We Mean Business Carbon Literacy training

- Information about current and future course dates can be found by joining the Climate Action Business Forum LinkedIn group: [linkedin.com/groups/9154994/](https://www.linkedin.com/groups/9154994/)

Support for Communities: Stockport Green Network

- The Green Network was formed by Stockport Council, with support from Sector3 and in partnership with climate and nature groups from across Stockport in April 2022.
- The network met 3 times in this reporting year: 28 people attended in June 2023, 22 attended in September and 34 in January 2024. Alongside this, the network planned and delivered Greenstock community fun day.

Stockport Food Partnership

- The Stockport Food Partnership is a collection of partners who work right across the food system (policy, education, local food economy, health and wellbeing, environment) who would like to support change.
- A steering group of 12 people support the development and strategic decision making within the partnership, this consists of public services, community sector and business.
- Through the Food Partnership work, actions to become a Sustainable Food Place and seek funding for a Food Coordinator will be progressed in 24-25.

Stockport CAN Fund

The table below summarises the two funding streams:

	CAN Seed Fund	CAN Catalyst Fund
Total amount allocated	£1,500 per ward (£31,500 total)	£40,000 over 2 rounds
Spend per project	Up to £1,000	£1,000 - £5,000
Decision maker(s)	Councillors (at Area Committee / via Director delegated authority in consultation with ward Councillors)	Cabinet Member for Climate Change & Environment
Open for applications	25 March 2024 to 28 February 2025	Round 1: 25 March 2024 to 30 June 2024 Round 2: 1 December 2024 to 28 February 2025
Who can apply	Organisations such as community	Constituted community organisations

	groups, shared interest groups, charities, and schools	and not-for-profits with an organisational bank account, and schools
Fund priorities	Climate-related projects such as active travel, energy efficiency, encouraging reuse and repair, planting and growing, and increasing biodiversity.	Bigger-scale projects that have significant impact in terms of greenhouse gas mitigation, climate engagement and behaviour change, and adaptation to the impacts of climate change.

Appendix B: Context for 2038 Carbon Neutrality target

Boroughwide Greenhouse Gas Emissions

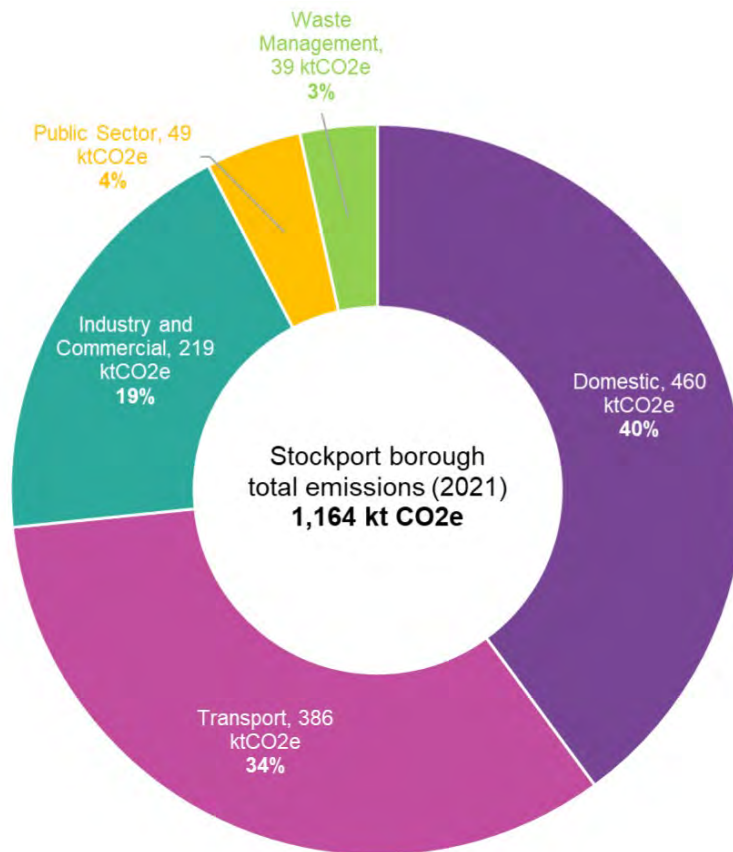
Whilst this report details significant progress, it is clear that the pace needs to increase if we are to meet both the council's 2030 operational net zero target and the biggest challenge of remaining within the borough's carbon budget set by the GM wide 2038 carbon neutrality target.

Data for greenhouse gas emissions at borough level are collated by national government (Department for Energy Security and Net Zero and Department for Business, Energy and Industrial Strategy) and provided two years hence. In 2021, Stockport as a borough emitted 1.164 million tonnes of GHG emissions (measured in CO₂ equivalents, see the graph below). This equates to 3.9 tonnes of Carbon Dioxide Equivalent (CO₂e) per person, which is less than the Northwest as a region (5.9 tonnes CO₂e per person). This is because Stockport is more residential and therefore has fewer emissions from industry and agriculture compared to other local authority areas in the Northwest.

The latest 2021 data shows borough-wide emissions increased by 1% compared to 2020. This increase was likely caused by the changing Covid-19 restrictions during 2021. This is in line with a national increase in overall emissions in the UK, which increased by 5% between 2020 and 2021. It is anticipated that emissions, locally and nationally, will have risen in 2022 and 2023.

Greenhouse gas emissions in the borough of Stockport have decreased by 10% since 2017 and have decreased by 40% since 2005 when borough-wide greenhouse gas calculations began. Though this is a positive trend, the reduction is not in line with the scale of reduction needed to meet the carbon neutrality target as outline in [Stockport's Carbon Budget](#). The primary driver of carbon reductions in the UK has been the shift away from use of coal and increase in renewable energy generation.

The two largest sources of emissions in Stockport remain the same when compared to previous years. In 2021, the largest source of emissions in Stockport came from energy used to power homes – which caused two-fifths (40%) of the borough's total emissions. The second-largest source was transport, representing just over a third (34%) of total borough emissions. Emissions from industry and the commercial sector account for a fifth (19%) of total emissions. Public sector accounted for 4% and waste management for 3%.



Appendix C: Key Terms

Greenhouse gas emissions (GHGs) - the release of greenhouse gases into the atmosphere. Greenhouse gases (also known as GHGs) are gases in the earth's atmosphere that trap heat and cause global warming. These include carbon dioxide, methane, nitrous oxide and fluorinated carbons. Carbon dioxide is the most prevalent GHG in the atmosphere which is why the term 'carbon' is often used to describe GHG emissions. However, there are other GHGs such as methane, nitrous oxide and fluorinated carbons which have significantly greater warming properties than carbon dioxide.

Net Zero – a net zero position is achieved when the human-caused greenhouse gases of an organisation are reduced as far as possible but then balanced by human-led activities which remove GHG emissions from the atmosphere. The total amount of GHGs emitted must equal zero, hence the term 'net zero' GHG emissions. Often a target time is set for achieving a 'net zero' position and these targets are often based upon a specific GHG or 'carbon budget'. In this instance the target is referred to as a 'Science-Based Target' (SBT). Please also see [ISO net zero guidelines](#) for a more detailed definition.

Science-Based Target - targets are considered 'science-based' if they are in line with what the latest climate science deems necessary to meet the goals of the Paris Agreement which is global warming to well-below 2°C above pre-industrial levels and pursuing efforts to limit warming to 1.5°C'.

Carbon Neutral - achieving a balance between the carbon dioxide emitted into the atmosphere and the carbon dioxide offset or removed from it. See [The difference between carbon neutral and net zero | National Grid Group](#)

Net zero 2030 – the net zero 2030 target focuses on the council's own operational GHG emissions, which make up around 2-3% of the borough's total emissions. We have committed to reduce these to net zero by 2030

Carbon neutral 2038 – the carbon neutral 2038 target focuses on all emissions in Stockport, including those from homes, businesses, transport, and industry.