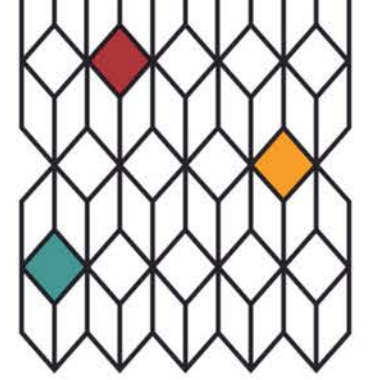


Group visits to Bramall Hall

www.stockport.gov.uk/museums



Bramall Hall



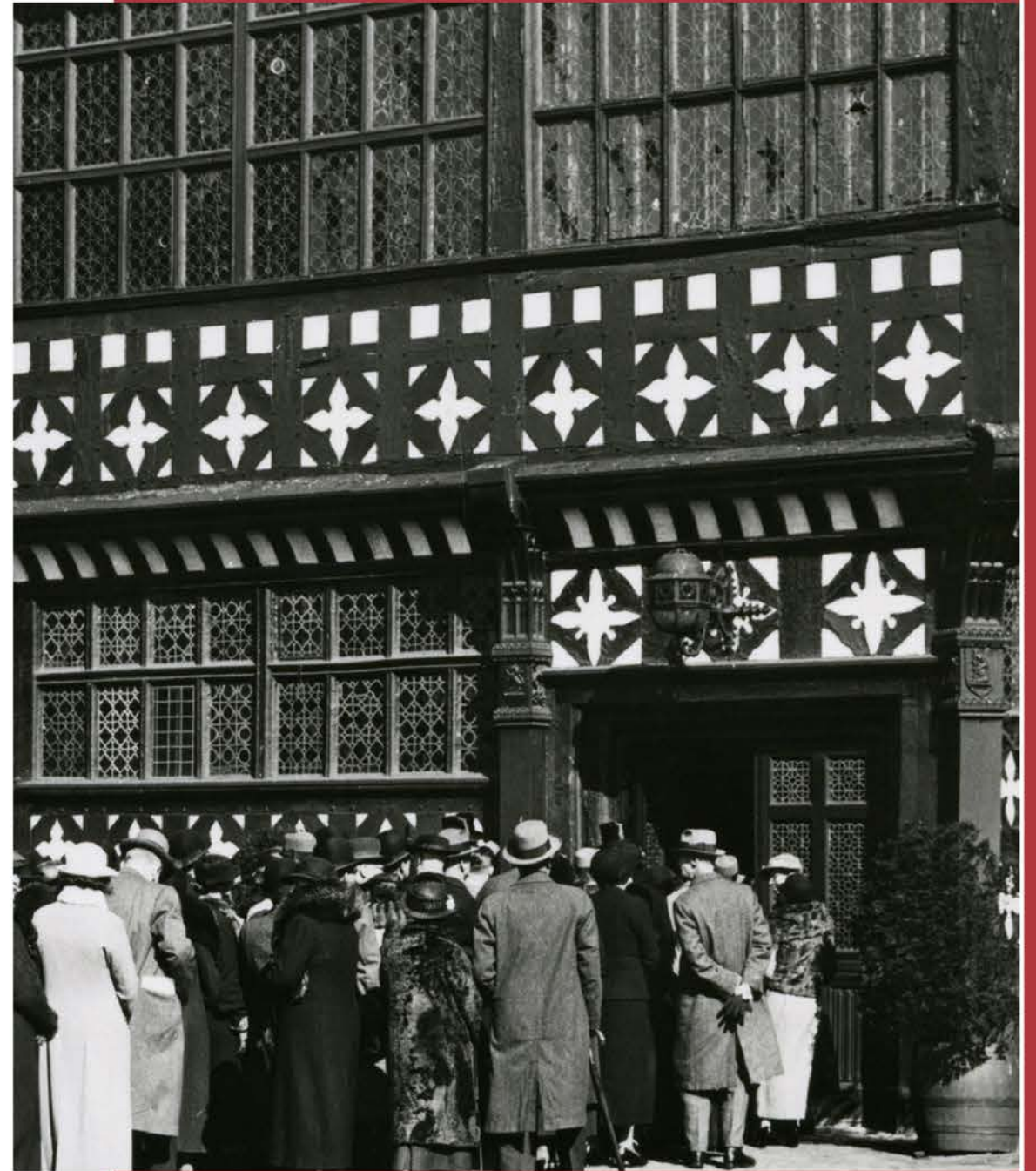
"Friendly staff, beautiful house...
a great example of it's kind."



Take a glimpse into the history of Bramall Hall

Bramall Hall is one of England's most striking Tudor Manor Houses. Set in 70 acres of parkland, this magnificent historic house has witnessed seven centuries of colourful history from medieval beginnings to present day.

We aim to provide a very special day out for all our visitors. This guide will provide key information about group visits and how to make your booking.



What we offer

We aim to offer group visitors a fascinating viewing of the Hall, as either a guided or non-guided tour.

Group visits are welcome during our public opening hours. To ensure that Bramall Hall can be explored comfortably, we accommodate groups of 12-40 people.



Guided tours with our expert team will take your group through each of the exquisite rooms and offer insight into the lives of the families who have lived and worked at the Hall over 600 years.

Guided tours are approximately 70 minutes long. Please note this includes exploring the upper floors of the Hall that are accessible by staircase only. Please see the accessibility section of this guide for more information.

Planning your visit



When to visit

Group visits are available all year round during our public opening times.

For quieter viewings of the Hall, we recommend booking weekday mornings, outside of school holiday periods.



Price & Pay

Group visits without a tour are charged at our standard admission price (£6.50 adults, £5.00 concessions).

Tours by an expert guide are £10.00 per person.

We can take payment ahead of your visit (over the phone) or on the day at our Visitor Centre & Shop.



How to book

To make a booking, simply get in touch;

0161 474 2020
bramall.hall@stockport.gov.uk

We will discuss availability, prices and any requirements for your group.

How to find us

Our address is Bramall Hall, Bramhall Park Stockport SK7 3NX.

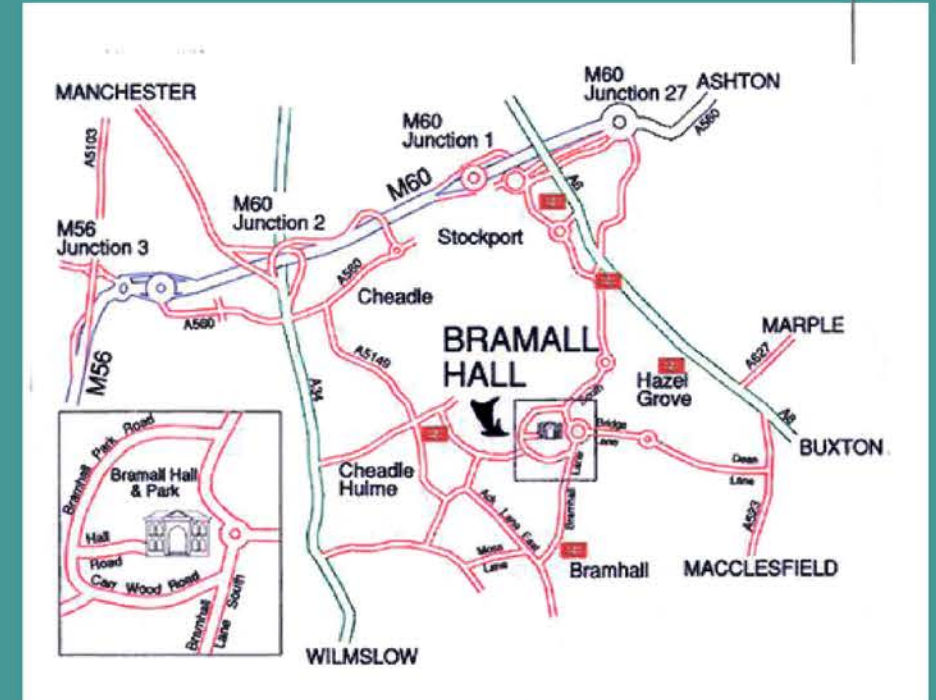
If driving, Bramall Hall is on the A5102.

It can be accessed from A34 (between Cheadle and Wilmslow) or A6 (between Hazel Grove and Stockport). Both are linked by the M60.

The main entrance to Bramall Hall and car parks are on Hall Road.

The 378 bus runs during opening hours between Stockport bus station and Wilmslow. Alight at Bramhall Green and walk uphill through Bramhall Park to arrive at the Hall.

Bramhall and Cheadle Hulme train stations are just over a mile on foot from the Hall.



Opening times

Bramall Hall is open on Tuesdays, Wednesdays, Thursdays, Fridays & Sundays.
11:00- 16:30 (last admission 15:45).

Visitor Centre & Shop is also open on
Saturdays, 11:00 - 16:30

Facilities at Bramhall Park

Parking

There are two pay & display car parks in Bramhall Park, both located on Hall Road. Parking metres take coins only (£3.60 all day) or payment can be made using the Ringo app.

Stables Kitchen

Stables Kitchen is next to Bramall Hall and serves an excellent selection of food and drink. Group visits are recommended to contact Stables Kitchen on 0161 485 4139 to make a reservation.

Bramhall Park

Bramall Hall is situated within the beautiful Bramhall Park. This is a public park open all year round and contains a children's playground, duck ponds and woodland.

Visitor Centre & Shop

Bramall Hall has a Visitor Centre & Shop which is open during standard opening times. The exhibition inside provides a fantastic introduction to history of Bramall Hall. Guide books can be purchased here as the perfect souvenir for your visit.



Frequently asked questions



Photography

Visitors are welcome to take photographs of the Hall and its collections, as long as no flash photography is used.



Refreshments

We are unable to provide refreshments as part of group visits.

Stables Kitchen is our neighbouring cafe and can provide a wide range of refreshments for your visit. Please contact them on 0161 485 4139 for reservations.



Cancellations

Please contact us if you need to cancel or amend your group visit booking. Cancellations should be made with at least two weeks notice.



Accessibility

There are three disabled parking bays located in both car parks in Bramhall Park (Hall Road). The car parks are 200m from the Hall across paved footpaths.

Bramhall Hall is fully accessible on the ground floor, which includes an accessible toilet. We have one wheelchair that can be used within the Hall on request.

The guided tour includes viewing of the upper floors, which can only be reached by staircase. For people with limited mobility, we offer concession admission price and audio-visual information about the upper floors of The Hall.

The Visitor Centre, Shop and Stables Kitchen are wheelchair accessible. Visitors should note that the courtyard entrance to these amenities contains uneven paving.

Bramhall Park contains a mixture of paved footpaths and non-paved woodland trails. There is a range of moderate and high level gradients.

Explore

Stockport Museums



Hat Works

Start your journey of discovery into headwear and wellbeing here, at the UK's only hat museum.

Explore the global connections of Stockport's hat collection and be inspired by the array of colours, shapes, patterns and textures of the hats on display.



Air Raid Shelters

Stockport's intriguing network of underground tunnels offers visitors unparalleled insight into life in 1940s wartime Britain. Authentically recreated settings illustrate the extent of Stockport's air raid precautions for life on the home front.



Staircase House

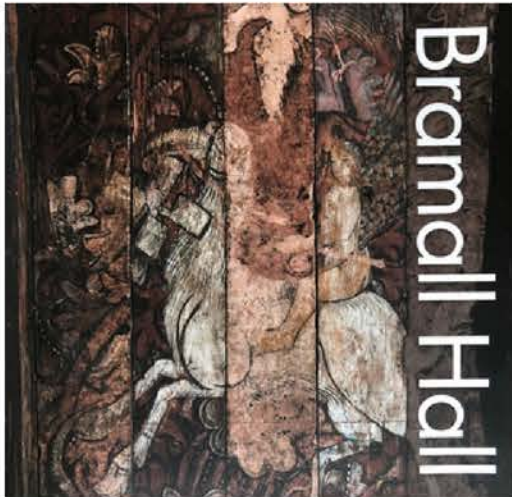
Staircase House is Stockport's oldest town house, situated in the Historic Market Place. The House and its rare Jacobean cage-newel staircase, have been beautifully restored. Take a historic journey back in time to discover how ancestors lived from the 15th to the 20th century.

Special offers

Guide book

Our guide book is the perfect souvenir for your visit and are available at our Visitor Centre & Shop at £6.50 each.

Group visitors can pre-order their guide book at a discounted price of £5.00 each. Simply order your guide books when you make your booking and they will be ready to collect from our Visitor Centre & Shop on the day.



Stockport Museums Explorer ticket

Enjoy a visit to Bramall Hall and each of our Stockport Museum sites at a reduced admission price.

The Explorer ticket offers reduced admission to each of our museums.* The Explorer ticket is available at £14.00 (£9.00 concessions). It is perfect for those who want to explore more of Stockport heritage.

Explorer tickets can be purchased from our Visitor Centre & Shop.

*Single use at each site only. Excludes special events and guided tours.

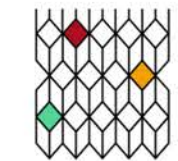
To book your visit

Contact us

0161 474 2020

bramall.hall@stockport.gov.uk

Bramall Hall, Bramhall Park,
Stockport SK7 3NX



Bramall Hall



STOCKPORT
METROPOLITAN BOROUGH COUNCIL

