

Your Council Tax explained 2021/22

Your Council Tax money goes towards local services such as support for the elderly and vulnerable, for young people and schools, parks maintenance, refuse disposal, street cleaning and many more local services.

Each property in Stockport pays Council Tax, the amount depends on what your property is worth.

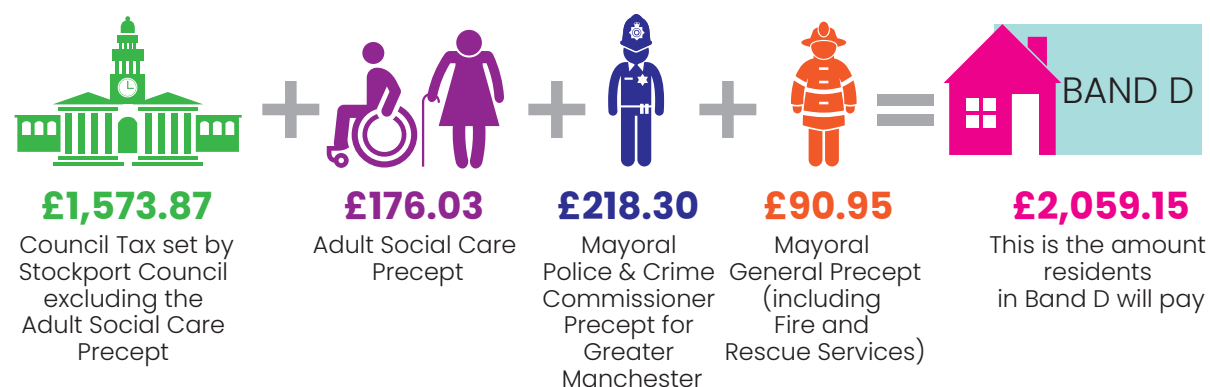
In Stockport, the Council Tax charges are as follows.

1 Yearly Council Tax charge for Stockport

BAND	
A	£1,372.76
B	£1,601.54
C	£1,830.35
D	£2,059.15
E	£2,516.74
F	£2,974.32
G	£3,431.91
H	£4,118.30



2 The charge for Council Tax is calculated as follows

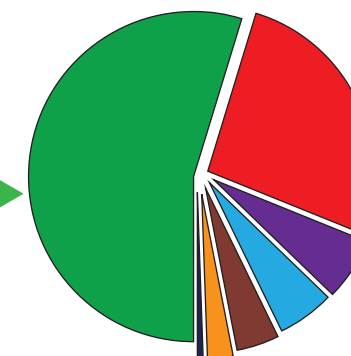


3 Stockport Council resources include your Council Tax

From section 2



55.3% **£151.005m**
Council Tax



4 The resources are then spent on



£46.308m
Children's and Education Services



£100.925m
Adult Social Care



£16.223m
Public Health



£48.262m
Cultural, Environmental and Planning Services



£27.548m
Highways, Roads and Transport Services



£33.561m
Corporate and Capital Financing Costs

UPTO 25% OFF

Upto 25% off your Council Tax if you qualify for a single person discount. For the full range of benefits and grants visit www.stockport.gov.uk/counciltax

My Account

You can now view your personal Council Tax information through a secure password protected account. **My Account** allows you to see all the information the Council has used to calculate your balance including a statement of your accounts, dates you are due to be charged and details of any reductions. Free internet access is available at all Council Libraries. To register for My Account visit www.stockport.gov.uk/myaccount For more information about how your Council Tax is calculated and spent visit

www.stockport.gov.uk/counciltax

Adult Social Care

The cost of adult social care is increasing due to the increasing demand for services which support our elderly and vulnerable residents.

As a provider of adult social care services Stockport Council is allowed, by Central Government, to include an Adult Social Care Precept on Council Tax Bills. For 2021/22 this Precept will increase by 1.5% raising additional income to support the funding of the increasing costs of providing adult social care services. This additional income ensures the Council is able to provide essential frontline services to our most vulnerable residents.