

Marple Neighbourhood Plan
Strategic Environmental Assessment Report
September 2021

Contents

Section 1 - Introduction	2
Marple Neighbourhood Plan Vision and Aims.....	2
Aims.....	3
Section 2 Legislative background.....	5
Strategic Environmental Assessment (SEA)	5
Habitats Regulations Assessment (HRA).....	5
Section 3 - Screening Process	6
Stockport Council Sustainability Wheel	6
The Screening Process	7
Section 4 - Findings	8
Section 5 - Conclusions	9
Marple Neighbourhood Plan Area	10
Appendix A – SEA Screening Detailed Breakdown.....	11

Section 1 - Introduction

Purpose of this Report

This Strategic Environmental Assessment (SEA) Screening Report addresses the requirement for a screening assessment to determine if the Marple Neighbourhood Plan is likely to have significant environmental effects. This addresses the requirement as set out in Regulation 9 of the Environmental Assessment of Plans and Programmes Regulations 2004. This section summarises the key information in the Marple Neighbourhood Plan (MNP) including its vision, objectives, the neighbourhood area covered and draft policies. MNP and this SEA Screening Report have been prepared by the Marple Neighbourhood Forum of local residents with support and advice from Stockport Council and other stakeholders. The MNP sets out draft local planning policies which will be used to help Stockport Council determine planning applications in the area up to (2036?). These policies have been prepared taking into account the concerns and ideas of local residents, which have been put forward during numerous informal public consultation processes since 2016.

Marple Neighbourhood Plan Vision and Aims

A Vision for Marple

The Vision for Marple aims to reflect the hopes and aspirations of the residents for the future of the town and to identify the role that the Neighbourhood Plan plays in achieving this:

- We are proud that Marple is a thriving and historic canal-side town with wonderful people, an active community and a good quality of life. It's a great place to live and we want it to stay that way, with an eye on how we can improve things for the future.
- Marple has an important history and many historically significant buildings and structures. We have an attractive environment with great community spaces and parks. The town supports a range of independent and national shops and we have a diverse range of employers. There is a very strong sense of community and a realisation that Marple has a lot to offer.
- We also have challenges. Marple's popularity means there is pressure to build houses; traffic congestion creates noise and pollution and the busy Stockport Road runs through the centre of our town. Shopping is changing and we need to ensure that we have a range of shops, particularly specialist ones, that Marple residents and people from outside want to use. Marple residents need good quality community and leisure facilities. We also need decent, affordable homes, particularly for younger people and better downsizing options for our older residents.
- Our residents have made it very clear that they want Marple to retain the character and heritage of a small town with a village feel. The key themes of our community feedback are to protect and preserve what we have, to look after our important historical and natural heritage, the surrounding green belt and to improve some key aspects such as the town centre environment, the provision of high quality community and leisure facilities and the reduction of car traffic dominance.
- Looking to the long term, we recognise that as the population ages we need to preserve the town's vitality and provide appropriate housing, care and accessibility.

Aims

In line with our vision we have set out the following aims:

TOWN CHARACTER

- We will retain our character and heritage as a small town with a village feel. We will protect our natural boundaries, avoiding the creep of urban sprawl. We will build further on our strong sense of community.
- We will encourage and support the improvement of the town centre to deliver a more viable, attractive shopping destination and a vibrant and successful evening economy.
- We will strive to support and retain our valued independent retailers and encourage residents to shop locally.
- We will seek to achieve a safe, welcoming and enjoyable town centre environment.

GETTING AROUND

- We will press for the problems of traffic congestion on our roads to be addressed.
- We will ensure our roads and streets are safe and accessible, better balancing the needs of pedestrians, cyclists and drivers.
- We will aim to ensure that all residents have easy access to community facilities and community green spaces for leisure and recreation.
- Rail is a major transport mode for Marple and needs better facilities and services more in line with the high volume of users. We will encourage the development of our two stations.

HOUSING

- We will aim to meet new housing demand in a way that is sympathetic to the area; that ensures the right type of housing is built in the right locations, and that a mix of housing types is delivered to include family homes that are affordable by a wide section of the population.
- We will support the development of smaller dwellings to provide for the increase in older residents and to encourage occupation by young people and young families.
- We will support the wider development aims of the Borough by encouraging development on brownfield sites, including around our rail stations and in the town centre.

NATURAL CAPITAL

- We will preserve our important green infrastructure and designated wildlife areas and the corridors connecting them.
- We will minimise the impact of development on the natural environment and encourage initiatives that result in a net gain of Natural Capital and make walking and cycling pleasant, safe experiences.

COMMUNITY SPACE

- Marple is a town with many highly valued community facilities; the library, the independent cinema and the Carver Theatre are just a few examples. There is also room for improvement; for example, the swimming baths closure, the absence of a modern public

fitness and leisure facility and the lack of a focal Community Centre. We will support and retain what we have and seek ways of making the improvements highlighted above a reality.

- We have a wealth of community spaces, both in terms of green areas and parkland and indoor community activities. However, the current facilities are in great demand and we need more modern, better quality locations that are fit for purpose.

HERITAGE AND TOURISM

- Our town is surrounded by wonderful countryside and has a great heritage, some important aspects of which (Mellor Mill, the Viaduct and the Lime Kilns) have been lovingly restored by the 'Oldknow's Legacy' project. Marple has much potential as a niche tourist destination that we want to encourage.

BUSINESS, EMPLOYMENT AND EDUCATION

- We will support the creation of an environment that is attractive for micro, small and medium-sized businesses and shops to locate and flourish.
- We will aim to retain the sites in our area which currently provide jobs in their present use and provide sustainable employment opportunities.

Section 2 Legislative background

The following legislative drivers exist for addressing screening of Neighbourhood Plans for likely significant impacts on the environment.

Strategic Environmental Assessment (SEA)

Strategic Environmental Assessment is required by the SEA European Directive 2001/42/EC "on the assessment of the effects of certain plans and programmes on the environment". SEA has been transposed into UK legislation by the Environmental Assessment of Plans and Programmes Regulations 2004. It must be determined for each document whether an SEA is required, in consultation with specified statutory consultees (the Environment Agency, Historic England and Natural England). This Screening Report has been shared with the statutory consultees as part of the consultation on the draft plan and this report. Stockport's adopted Core Strategy and any other adopted local plan documents have undergone SEA Screening and wider assessment. The overarching assessments have been drawn on to inform the screening assessment of the Marple Neighbourhood Plan. The reports for these plans are available here:

www.stockport.gov.uk/supporting-documents

Habitats Regulations Assessment (HRA)

Habitats Regulations European Directive 92/43/EEC (the Habitats Directive) on the Conservation of Natural Habitats and of Wild Fauna and Flora requires that any plan or project not directly connected with or necessary to the management of a designated habitats site, but likely to have a significant effect thereon, either individually or in combination with other plans or projects, is to be subject to an Appropriate Assessment (AA) of its implications for the site in view of the site's conservation objectives. Where significant negative effects are identified, alternative options should be examined to avoid any potential damaging effects. Part IV of the Conservation (Natural Habitats, &c) Regulations 1994 implements the HRA requirement for specified planning and other similar consents. In October 2005 the European Court of Justice ruled that this requirement extended to land use plans. This was set out in the Conservation (Natural Habitats, &c) (Amendment) (England and Wales) Regulations 2007 which inserts a new Part IVA into the 1994 Regulations and came into force on 21 August 2007. A Habitats Regulations assessment identifies whether a plan is likely to have a significant effect on a European site, either alone or in combination with other plans or projects. This assessment must determine whether significant effects on a European site can be ruled out on the basis of objective information.

Stockport Council have advised that there are no European designated sites for Special Protection Areas, Special Areas of Conservation or Ramsar within Stockport's boundary. The overarching Stockport Core Strategy and emerging new Local Plan have been and are being assessed for HRA using a 15km boundary around the Borough. The Core strategy HRA report determined that no European Sites were likely to be significantly impacted upon by either policies or allocated sites.

Section 3 - Screening Process

This section reports on the process the Neighbourhood Forum undertook to tackle the task of undertaking a Screening Assessment of the emerging Neighbourhood Plan:

Stockport Council Sustainability Wheel

Stockport Council provided advice to the Neighbourhood Forum on undertaking Strategic Environmental Assessment on Neighbourhood Plans. Stockport's Sustainability Wheel (the Council's tool that is the Sustainability Appraisal Framework for the Local Plan) was provided for use in completing a screening assessment of the early stages of the Marple Neighbourhood Plan to address the SEA requirements. The Wheel contains detailed instructions on how to undertake an assessment using the tool and input from as many stakeholders as possible.

The aim of the Wheel is to offer a simple tool which produces a graphic output clearly showing a rating for the sustainability of an emerging policy or strategy. The larger the footprint the less sustainable the plan is likely to be. There is no expectation that the score will be good for all users. In fact, the tool is designed to show where policy writers could look to improve policy as much as is feasible, but it is accepted that in the real-world compromises are often required. The Wheel is designed to consider the three cornerstones of sustainability -Economy, Social and Environmental issues -in light of objectives which were determined and agreed by a stakeholder steering group in September 2008. There are a range of Decision Making Criteria which prompt a potential response from the list below which results in the production of a score on the Wheel output. The Wheel can be adapted to smaller scale spatial plans through the use of a 'not applicable' response where relevant.

Scoring has been devised to offer a choice of symbol for the following potential responses:

- Very positive impact (++) -means the policy will deliver against this criteria
- Slightly positive impact (+) -means the policy will mainly deliver against this criteria
- Neutral impact (\) -policy implementation could have either a negative or positive impact
- Slightly negative impact (-) -means there are potential slight impacts if the policy is implemented
- Very negative impact (--) means the policy implementation could have a direct negative effect
- Unknown (?) -it is unknown what the impact might be (e.g. lack of evidence etc)
- Not applicable (NA) -in certain specific policies not all questions will be applicable.

The scoring is achieved through a numeric calculation from the symbol entered which allows for zero responses for not applicable outputs, however unknown will return a negative response - If evidence is lacking for example this should highlight a need to better inform policy development. Stockport Council advised that a Screening Report based on the work the Marple Neighbourhood Forum has done using Stockport Council's Sustainability Wheel would be sufficient to address an assessment of likely significant environmental impacts, whilst informing development of the MNP. Where no likely significant effects have been identified that report would be sufficient to address the regulatory requirement and ensure that environmental impacts are considered for screening purposes. If likely significant impacts were identified it would also help to establish the next stages for further SEA work.

The Screening Process

Stockport Council's Sustainability Wheel was used by the Marple Neighbourhood Forum as advised. This assessment tool was completed by the Forum Chair, supported by reviews from the Vice-Chair, and a number of Forum Committee members. When the initial draft Version 1 was completed, it was sent to the Council's appraisal lead who reviewed it and provided detailed feedback on changes to the scores and justifications.

Stockport Council have advised a Screening Report based on the work Marple has done using Stockport Council's Sustainability Wheel would be sufficient to inform a Screening report. Where no likely significant effects have been identified that report will be sufficient to address the regulatory requirement and ensure that environmental impacts are considered for screening purposes.

Comments received on Version 1 were reviewed the Forum Chair, and the updates checked by Forum Committee members. It was then circulated to the Forum committee following a review at the monthly meeting.

Version 2 of the Sustainability Wheel was re-submitted to the Council for the Appraisal lead's further review. It was agreed by the Council that no likely significant effects were identified through this process as evidenced in the Wheel outputs based on all the information provided by the Neighbourhood Forum. Figure 2 in Section 4 shows the Wheel output showing a reasonably small footprint indicating good sustainability. See the appendix for the more detailed assessment work backing up the Wheel output.

Marple Neighbourhood Forum have not identified any specific sites for development as part of the Plan making process.

Section 4 - Findings

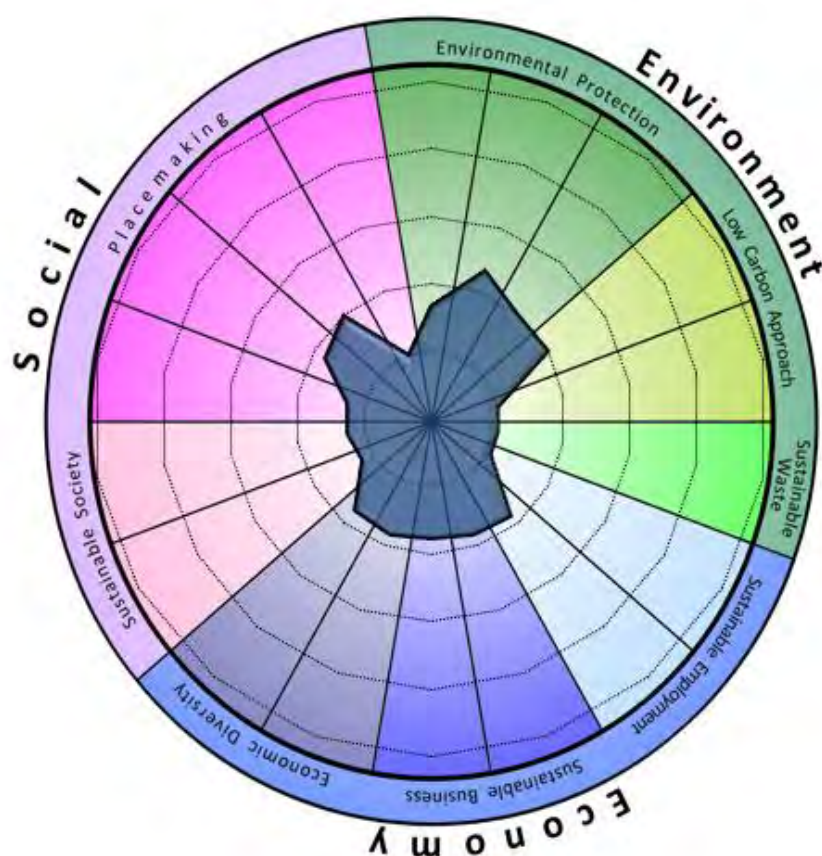
This Section reports on the findings of the use of Stockport's Sustainability Wheel in assessment of emerging and draft policies.

The Wheel ensures that assessment includes consideration of the likely significant effects on the criteria from Schedule 1 of the SEA Regulations for each of the issues: biodiversity, population, human health, fauna, flora, soil, water, air, climatic factors, material assets, cultural heritage and landscape. It is designed to deliver wider sustainability appraisal and therefore takes account of social and economic impacts and benefits as well.

The Wheel is designed to primarily deliver appraisal of Borough level planning documents. Some of the elements have not been felt to be relevant at a neighbourhood plan level but the scoring allows for any 'not relevant' scores.

In summary the output clearly shows a minimal footprint in sustainability terms indicating that the draft MNP will not have any detrimental effects as a result of its policies.

Figure 2 below shows the footprint output of the revised assessment:



The outputs show that in environmental terms the MNP should perform well, aiming to protect and enhance environmental assets. There were no sites to be appraised as part of the MNP screening process. The appendix shows the detailed findings including justifications for the scores assigned to each criteria.

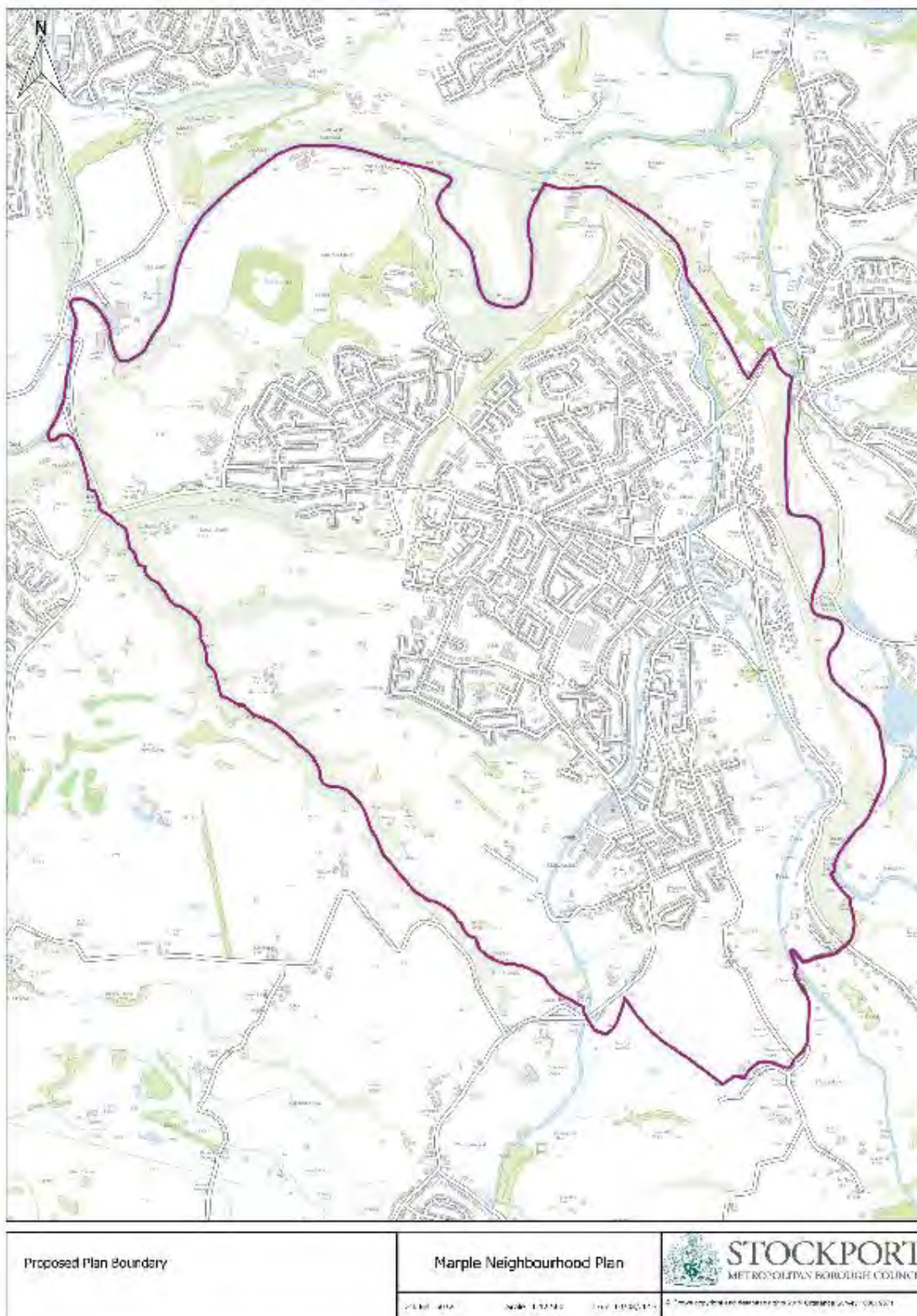
Section 5 - Conclusions

Based on the information within this SEA report and the appendix and draft Neighbourhood plan, this is our proposed statement:

The Marple Neighbourhood Plan Screening Assessment has clarified that no further SEA is required. This conclusion takes account of there being no likely significant environmental impacts identified regarding the emerging policies. The Sustainability Wheel findings support this statement. Furthermore no sites are proposed for allocation through the Marple Neighbourhood Plan which therefore means no likelihood of significant impact.

Marple Neighbourhood Plan Area

Below is a map of the Marple Neighbourhood Plan area followed by details of the Plan vision and objectives:



Appendix A – SEA Screening Detailed Breakdown

Objective	Decision Making Criteria	Score: ++ ; + ; \ ; - ; -- ; ?; NA	Justification
Protect and enhance human health	Will it improve human health?	++	The Plan sets out the aspiration for a Community Leisure Centre including a new swimming pool that will be a clear recognition of the importance of healthy lifestyles. Policies addressing car dominance in the town and encouraging cycling and walking will positively impact on exercise and air quality. Policies protecting the natural environment, central to the lives of many of the town's residents will further aid physical and, importantly, mental well-being.
	Will it reduce death rates?	++	see comment above - Marple is already a healthy environment - the policies generally seek to ensure this continues into the future and improves in terms of facilities, the natural environment, the quality and safety of the town centre and the encouragement of healthy, sustainable lifestyles.
	Will it reduce and/or manage limiting long term illnesses?	++	The Plan recognises the need for housing that supports independence in old age and for those with disabilities
	Will it reduce smoking, alcohol use and obesity?	+	There are no specific policies dealing with smoking or alcohol but there is a strong general theme of well-being designed to encourage healthy lifestyles.
	Will it reduce accidents?	++	Marple is fortunate to have a positive road safety record in spite of the volume of traffic on the main through routes. The town centre and transport related policies are at the forefront of this plan and focus on the quality and the safety of our key public spaces. This is particularly important as we seek to encourage walking and cycling as alternatives to short car journeys. It is also important given the demographic trend towards older residents.
	Will it foster a healthy environment for residents at work and at rest?	++	Our community space policies, both outdoors and indoors, are designed to protect and encourage the many groups that provide well-being and recreational services to the town.
redress inequalities related to age, gender, race,	Will it reduce health inequalities?	++	This is a key objective of the new community leisure facility. The support for affordable housing will also contribute to addressing health inequalities as part of wider socio-economic inequality

Objective	Decision Making Criteria	Score: ++ ; + ; \ ; - ; -- ; ?; NA	Justification
disability, faith, deprivation, locality	Will it reduce poverty?	+	The Plan is designed for the benefit of all who live and work in Marple - the encouragement of a healthy inclusive community with a vibrant town centre and first class facilities will encourage businesses and generate employment opportunities. The plan has policy support for affordable housing/employment opportunities which specifically will benefit the socio-economically deprived.
	Will it help to create a cohesive community?	++	Yes - for all the reasons outlined above.
	Will it protect and improve existing community services and facilities?	++	Yes this is clearly one of the plans key objectives both in specific policies and wider aspirations.
	Will it offer opportunities for residents to interact?	++	As above - particularly in the case of the Community Centre and Town Centre improvement and the Community Space policies.
	Will it ensure access to an affordable & decent home?	++	The Housing policies deal specifically with affordable housing and housing that is well suited to an older demographic
	Will it improve access to employment, particularly for low income families?	+	Plans and policies for the Town Centre are aimed at a strong local economy. Aspirations for Goyt Mill would see it continuing to provide a mixed solution of apartments and economical business space.
	Will it encourage independent living?	++	The Housing policies seek to improve the options for older residents to rightsize increasing the options for remaining independent
improve equitable access to a healthier, happier and more sustainable lifestyle	Will it improve access to health & welfare services and information?	++	The aspiration towards Placemaking in the Town Centre and the encouragement of safe walking and cycling along with measures to lessen the dominance of private vehicle traffic will have a positive impact on all forms of access. The plan found no issues with GP capacity . New community facilities are cited.
	Will it ensure access as determined by Disability Discrimination Legislation?	+	Improving the Town Centre environment has the aim of making all public services more accessible to Marple residents
	Will it encourage healthy lifestyles, including sustainable transport options?	++	Sustainable transport is one of the key themes of the plan and its policies as is the encouragement of the use of Marple's parks and adjacent countryside and the canal environment.
	Will it improve and increase access to leisure, physical activity & sport, cultural and arts facilities?	++	Yes. The planned Community Centre will be emblematic of our prioritisation of activity, sport, arts and culture. The support for the community purchase and redevelopment of Marple Wharf as a communal facility is another example. Policies also support cultural venues - heritage, cinema etc

Objective	Decision Making Criteria	Score: ++ ; + ; \ ; - ; -- ; ?; NA	Justification
	Will it maintain and where possible increase the area and quality of green belt and green chain in Stockport?	++	Yes the plan fully supports wider objectives for prioritising brownfield development
	Will it improve access to wildlife, wildlife sites and local green space?	++	Environmental protection and improved Natural Capital are part of the plans central objectives.
	Will it ensure access to local shops with supplies of locally and/or organically sourced healthy food?	++	The revitalisation of the town centre has the provision of specialist local retailers as a key objective.
	Will it maintain or improve access to and provision of allotments?	+	In general the policies will conserve the current allotments - although this must be balanced with the encouragement of development around transport hubs
Achieve a safe and just community	Will it help to create communities where people feel safe?	++	A safe and enjoyable environment is central to the town centre Placemaking aspirations.
	Will it promote design that discourages crime / anti-social behaviour?	\	There are no specific policies related to crime or anti-social behaviour
	Will it promote a safe public transport system?	++	Safety is at the heart of the Getting Around objectives and policies
	Will it promote safe cycling and pedestrian routes?	++	Yes - this is a primary goal of the Getting Around policies
	Will it promote opportunities for reducing re-offending rates?	+	Affordable housing and support for varied and robust employment in policies could support rehabilitation of resident ex-convicts thereby reducing re-offending
Create places, spaces and buildings that work well, wear well and look well	Will it promote use of standards such as C4SH & BREEAM?	\	The plan will comply with the policies regarding these categories in the Stockport Local Plan
	Will it promote provision of appropriate housing dwelling mix and tenure?	++	Yes - there is a specific target for the extent of affordable housing in developments
	Will it respect, protect and enhance existing sites, areas and settings of historical, archaeological, architectural or cultural interest?	++	The Plan has a specific section covering heritage objectives and policies

Objective	Decision Making Criteria	Score: ++ ; + ; \ ; - ; -- ; ? ; NA	Justification
	Will it encourage the use of sustainable transport options and reduce congestion?	++	The key elements of the plan all address issues of sustainable transport and the reduction of congestion. Focussing future development around the public transport hubs, town centre traffic calming, a better and safer environment for walking and cycling, better facilities at the railway stations.
	Will it encourage the use of innovative design including ideas such as passive solar, green roofs or creative use of space?	\	There are no specific design codes or checklists mandates in the policies
	Will infrastructure be designed to promote development of such places, spaces and buildings?	N/A	see note above
enhance rural and urban local character and protect local distinctiveness	Will it promote the sensitive re-use of historic or culturally important buildings where appropriate?	++	The plan has a specific section with policies that protect Marple's considerable heritage.
	Will it conserve and enhance local landscape character?	++	Marple NP area is not covered by any designated Landscape Character Areas according to Stockport's 2018 Landscape Character Areas Study (www.stockport.gov.uk/evidence-planning-policy/environment-and-heritage) and the NP policy approach is to make use of brownfield sites, support local distinctiveness and drive locally sympathetic development which will reduce impact on surrounding LCAs.
	Will it protect and enhance the uniqueness of places and spaces?	++	Yes. The support for the community purchase and redevelopment of Marple Wharf as a communal facility is a good example.
	Will it ensure local environmental quality is maintained and/or improved?	++	Plans for town centre redevelopment are in progress and have the quality of the local environment as a key objective.
Protect Biodiversity, Habitats and Species	Will it avoid damage to nationally and locally designated sites of nature conservation or geological interest?	+	Marple has no specifically designated nature conservation or geological sites.
	Will it create any new wildlife sites?	\	There are no plans or requirements to do this.
	Will it help protect any species at risk?	N/A	There are no identified species at risk in the plan area.

Objective	Decision Making Criteria	Score: ++ ; + ; \ ; - ; -- ; ? ; NA	Justification
	Will it minimise fragmentation of habitats?	++	The Natural Capital policies take local habitat conservation into account. Policy NC1 supports GI and ecological networks which will address this concern.
	Will it ensure protection against climate change impacts?	++	The policies on biodiversity net gain address climate change adaptation as do the energy/transport policy aims
	Will it enhance biodiversity?	++	The policies are designed to protect rather than enhance as Marple is already rich in natural assets.
Conserve & protect natural resources	Will it maintain and improve the quality of ground and surface waters?	+	Policies on environmental protection and pollution reduction contribute to improved water quality in local water courses
	Will it ensure sustainable management of water courses?	+	For example, policies aiming to enhance the environment near to the canal
	Will it protect soil resources?	\	There are no specific policies related to soil resources
	Will it protect agricultural land?	\	There are no additional protections proposed for agricultural land
	Will it protect and enhance the natural environment resource of Stockport Borough?	++	There is a section of policies dedicated to protecting Natural Capital
	Will it ensure sustainable management of our mineral resource?	N/A	GM Joint Minerals Plan addresses this issue.
Reduce emissions	Will it reduce contamination and pollution of land?	\	The promotion of a shift from car use could reduce the impact from surface water runoff pollutants on land in the area.
	Will it reduce pollution of water systems?	\	As above for water courses in the vicinity of Marple.
	Will it help maintain and improve local air quality?	++	The policies related to reduced use of private vehicle transport and town centre traffic measures will have a positive impact on air quality.
	Will it minimise the environmental impact of travel (e.g. noise, air pollution, congestion)	++	yes - see above
	Will it minimise or promote alternatives to the use of fossil fuels?	++	Policies NC2 and NC3 support renewable energy (non-fossil fuels) and promotion of sustainable transport supports a shift from fossil fuel

Objective	Decision Making Criteria	Score: ++ ; + ; \ ; - ; -- ; ? ; NA	Justification
	Will it help to minimise carbon emissions?	++	Policies NC2 and NC3 support renewable (low/zero carbon) energy (non-fossil fuels) and promotion of sustainable transport will reduce carbon emissions from car use.
	Will it minimise excessive noise?	+	Policies designed to reduce the dominance of traffic in the Town Centre will have a positive impact on noise levels
Mitigate and adapt to climate change	Will it encourage water efficiency, including recycling and re-use, through efficient building design and construction (including promotion of SUDS)?	\	There are no specific policies related to water quality or efficiency
	Will it minimise risk to people, property and ecosystems from flooding?	+	Policies related to carbon reduction will positively impact incidence of flooding.
	Will it encourage energy efficient buildings and the efficient use of energy?	++	The housing policies cover energy efficient design
	Will it encourage low carbon technologies?	++	Yes - we have specific policies encouraging renewable energy and sustainable energy production
	Will it reduce Urban Heat Island effects?	++	Policies encourage no net loss of biodiversity which supports retention of trees and other Green Infrastructure that can help to address Urban Heat Islands.
	Will it encourage use of non-hard surfaces and reduce loss of permeable surfaces?	\	We have not specified materials in detail
	Will it encourage the use of innovative design (e.g. passive solar or green roofs)?	+	We have not specified any green technologies but encourage their use through the renewable energy policy
	Will it reduce the need to travel?	++	Core theme of development near to transport hubs and also live/work units
Minimise car use & encourage walking & cycling	Will it facilitate reduction of the distances needed to travel?	++	see note above
	Will it help to reduce the reliance on the private car?	++	Yes through encouraging cycling, walking and access to public transport - developments close to transport hubs

Objective	Decision Making Criteria	Score: ++ ; + ; \ ; - ; -- ; ? ; NA	Justification
	Will it promote sustainable transport options using safety conscious design?	++	Yes - the plan strongly supports sustainable transport options
	Will it help reduce traffic congestion?	++	This is a key intention - dependent on collaboration with SMBC is re-designing the town centre
	Will it ensure adequate provision of facilities for cyclists and pedestrians?	++	It will encourage but does not have the power to ensure provision
	Will it improve public transport provision?	N/A	As the aims of the plan are to facilitate an increase in public transport use which can have a positive indirect effect on provision.
Minimise waste, re-use or recover through increased recycling and/or composting	Will it facilitate prevention, re-use and recycling of waste?	N/A	GM Joint Waste Plan and Stockport Local Plan deal with waste issues
	Will it facilitate community waste management schemes?	N/A	GM Joint Waste Plan and Stockport Local Plan deal with waste issues
	Will it encourage appropriate design to facilitate Sustainable Waste Management by local agencies?	N/A	GM Joint Waste Plan and Stockport Local Plan deal with waste issues
	Will it encourage Site Waste Management Plans?	N/A	GM Joint Waste Plan and Stockport Local Plan deal with waste issues
	Will it promote sustainable consumption and production?	N/A	GM Joint Waste Plan and Stockport Local Plan deal with waste issues
	Will it encourage the disposal of waste as close to point of origin as possible?	N/A	GM Joint Waste Plan and Stockport Local Plan deal with waste issues
Improve the options to achieve satisfying and rewarding work and reduce unemployment	Will it facilitate an increase in sustainable employment?	++	This would be an anticipated outcome of investment in the town centre
	Will it reduce unemployment, underemployment & worklessness?	++	See above
	Will it improve access to employment opportunities?	++	See above
	Will it improve access to sustainable transport, particularly for commuting?	++	See Town Centre and Getting Around policies

Objective	Decision Making Criteria	Score: ++ ; + ; \ ; - ; -- ; ?; NA	Justification
	Will it promote creation of a healthier working environment and workforce?	++	see above
Invest in people, equipment, infrastructure and other assets	Will it improve sustainable access to education and training?	++	The plan encourages the development of cycling and walking routes including access to schools and colleges
	Will it improve the level of investment in community services and infrastructure?	++	Significantly - for example the new Community Centre development
	Will it facilitate a low carbon economy?	+	In the sense that it will be weighted in favour of cycling, walking and public transport and the proportion of renewable/low carbon energy and technologies which could be delivered by local firms benefitting a local low carbon economy.
	Will it facilitate businesses to take up ICT options before travel options?	\	This is already an outcome of the COVID pandemic
	Will it support home working?	++	Encourage of live/work units
	Will it assist organisations to implement green travel plans?	+	The plan aims to encourage sustainable transport and infrastructure which could facilitate local businesses to undertake a flexible approach to home-working
Assist and encourage sustainable business practices including creating future sustainable citizens	Will it encourage businesses to invest in sustainable practices including improving efficiencies?	+	The promotion of renewable energy and sustainable transport in the plan enables local businesses to invest in sustainable practices - eg sustainable commuting, net zero energy choices
	Will it encourage development which ensures businesses can operate more sustainably?	+	The promotion of renewable energy and sustainable transport in the plan facilitates development that could enable local businesses to operate sustainably.
	Will it offer opportunities for employees to engage in sustainable commuting and travel for work?	++	Sustainable transport promotion in the plan would specifically enable workers working in Marple and commuting out to do so via sustainable transport options
	Will it encourage the provision of education & training facilities which promote the ideals of sustainable development?	+	The promotion of renewable energy as well as sustainable access to schools/college through new housing development in sustainably accessible locations and the plans promotion of sustainable transport would enable students to travel on foot, by bike and on public transport and for schools/college s to consider renewable energy when energy/heating system upgrades are required.

Objective	Decision Making Criteria	Score: ++ ; + ; \ ; - ; -- ; ?; NA	Justification
	Will it offer the opportunity to improve the skills of employers and employees in sustainable business practices?	+	Employees will be better able to commute sustainably as a direct result of the plan.
Support sustainable local business start up and retention	Will it support sustainable business development?	\	The plan supports new development to use renewable energy/sustainable transport modes and supports a sustainable economy.
	Will it assist with business retention where appropriate?	++	The aim of the plan is to support Marple's economy and facilitate the prosperity and continuation of existing businesses
	Will it encourage the development of social enterprise?	++	The Forum and the Neighbourhood Plan very supportive of community based initiatives - e.g. Marple Wharf, Marple Independent Traders
	Will it support small & medium business development?	++	The Town Centre placemaking initiative sees this as a core objective
Encourage innovation and new business development particularly in the sustainability sector	Will it encourage innovation in existing business and new business development?	+	The Plan has no specific policies in this respect but is general supportive in this respect
	Will it encourage development of businesses serving a sustainable lifestyle?	+	see above
	Will it increase access to facilities and services which offer opportunities for a more sustainable lifestyle?	+	see above
	Will it facilitate an increase in the number of businesses working in the sustainability field?	+	see above
	Will it promote local sustainable tourism (e.g. EcoHotels, Farm B&B)?	++	The plan has a specific section on Heritage and Tourism
Deliver a spread of business types by sector & geography	Will it contribute to the vitality and viability of an existing centre, including sub-urban economic sectors?	++	Yes - Town Centre policies and Placemaking

Objective	Decision Making Criteria	Score: ++ ; + ; \ ; - ; -- ; ?; NA	Justification
	Will it encourage the diversification of employment in the Borough?	+	Policies aim to support a diverse local economy through supporting provision of a mix of business venues in style/scale which can support a variety of business types and sizes
	Will it foster the establishment of local businesses with skills to further enhance a sustainable Stockport?	+	Policies aim to support a diverse local economy through supporting provision of a mix of business venues in style/scale which can support a variety of business types and sizes
	Will it increase businesses set up by Female / Younger and Older / BME / Disabled Business People	+	Policies aim to support a diverse local economy through supporting provision of a mix of business venues in style/scale which can support a variety of business types and sizes